

- PRESENTED BY -

WM FARES
ARCHITECTS

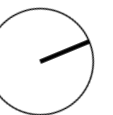
3480 Joseph Howe Dr. | Suite 500 | Halifax, NS B3L 4H7 | 902.457.6676

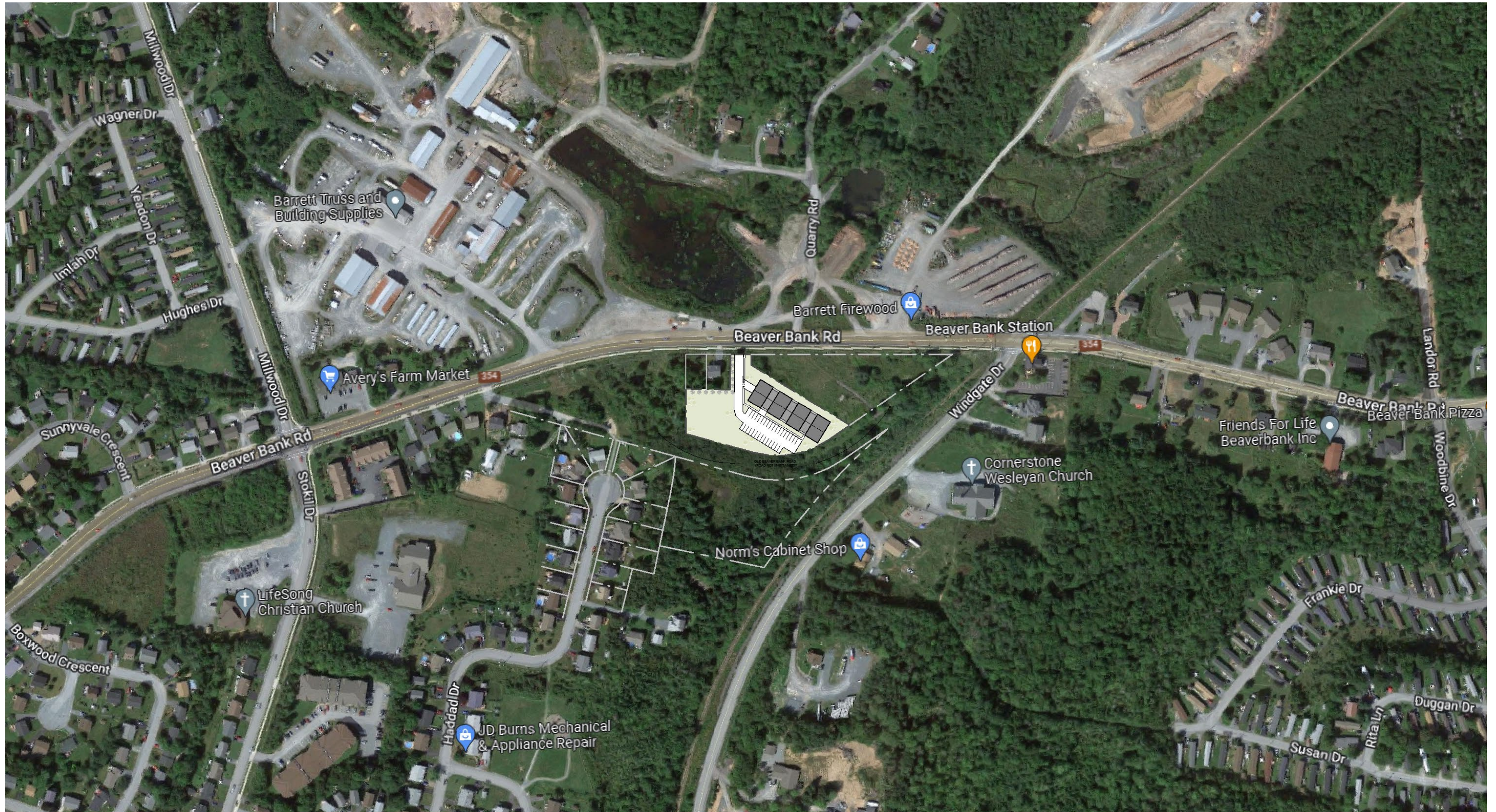
ON BEHALF OF

The Roman Catholic Episcopal
Corporation of Halifax

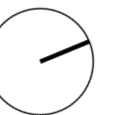


- PROJECT LOCATION -





- CONTEXT PLAN -



- SITE PLAN -

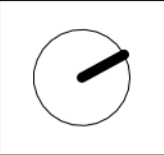


| PROPOSED BUILDING | |
|-------------------------|---------------------------------|
| LOT AREA | 68 196sf (6 336m ²) |
| LOT COVERAGE | 25% |
| # OF UNITS | 46 |
| MIN 50% 2 BEDROOM UNITS | |
| # OF U/G PARKING | 36 |
| # OF SURFACE PARKING | 32 |
| # OF FLOORS | 4 |

Beaver Bank
Beaver Bank Rd. Sackville, NS

SITE DEVELOPMENT PLAN

Project No: 2019-23
Scale: As indicated
Date: 2022-08-17 1:25:36 PM



WM FARES
ARCHITECTS

D1

BUILDING DETAILS

TOTAL UNITS: 46 Units
UNIT MIX: 22 One-Bed, 24 Two-Bed
PARKING: 68 Spaces Total
AMENITY AREA: 1 120sf (104m²)



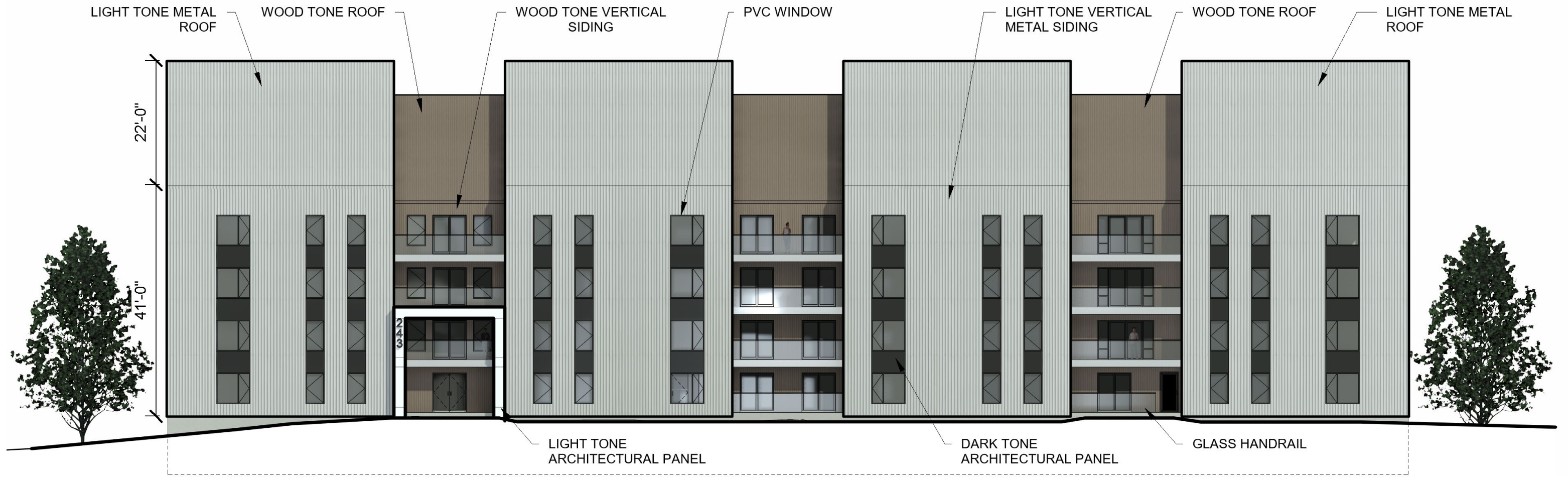
- BUILDING PLAN – L1 -

BUILDING DETAILS

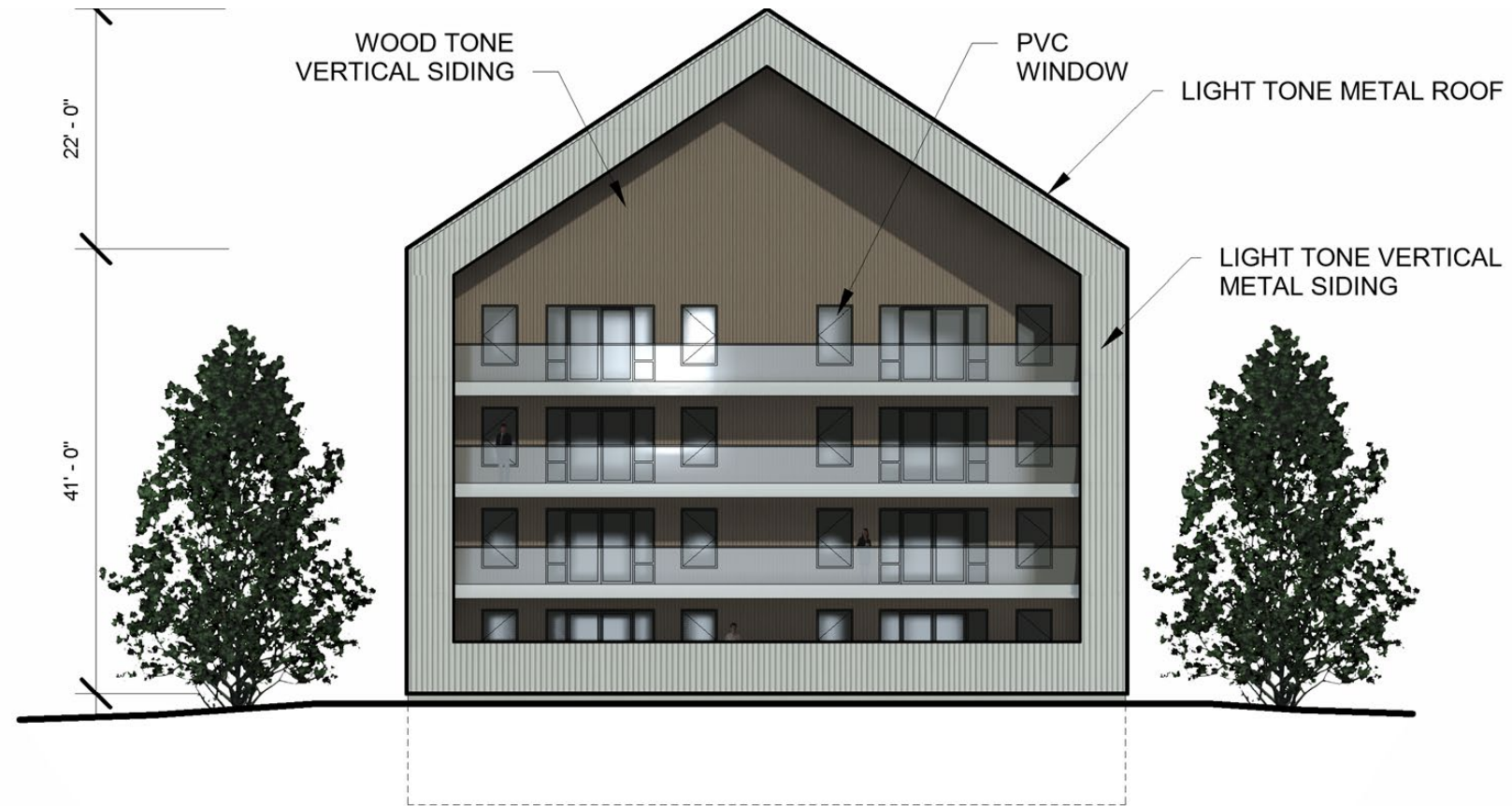
TOTAL UNITS: 46 Units
UNIT MIX: 22 One-Bed, 24 Two-Bed
PARKING: 68 Spaces Total
AMENITY AREA: 1 120sf (104m²)



- BUILDING PLAN – L2 to L4 -



SOUTH ELEVATION

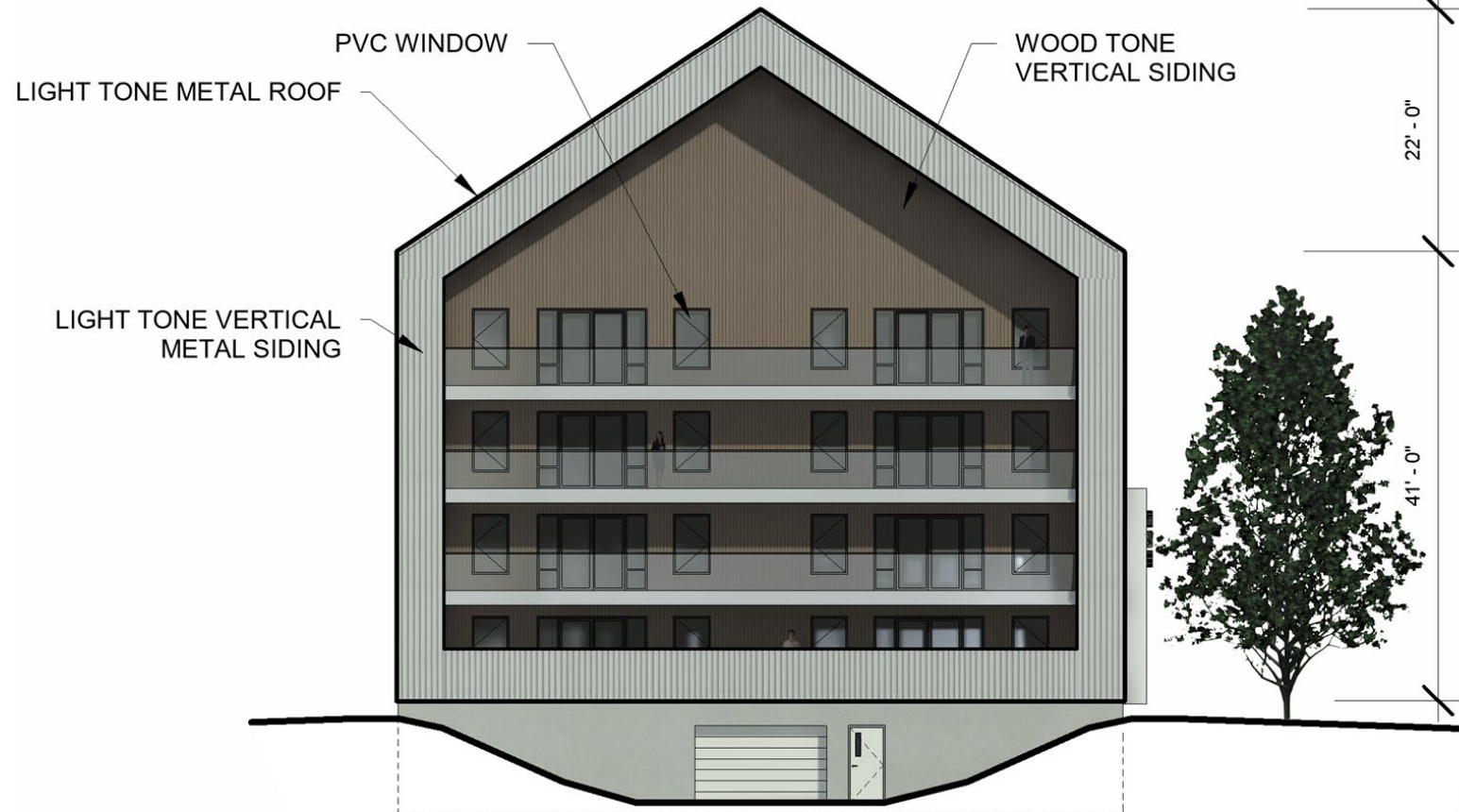


EAST ELEVATION

- BUILDING ELEVATIONS -



NORTH ELEVATION



WEST ELEVATION

- BUILDING ELEVATIONS -



- 3D VIEWS -



- 3D VIEWS -