

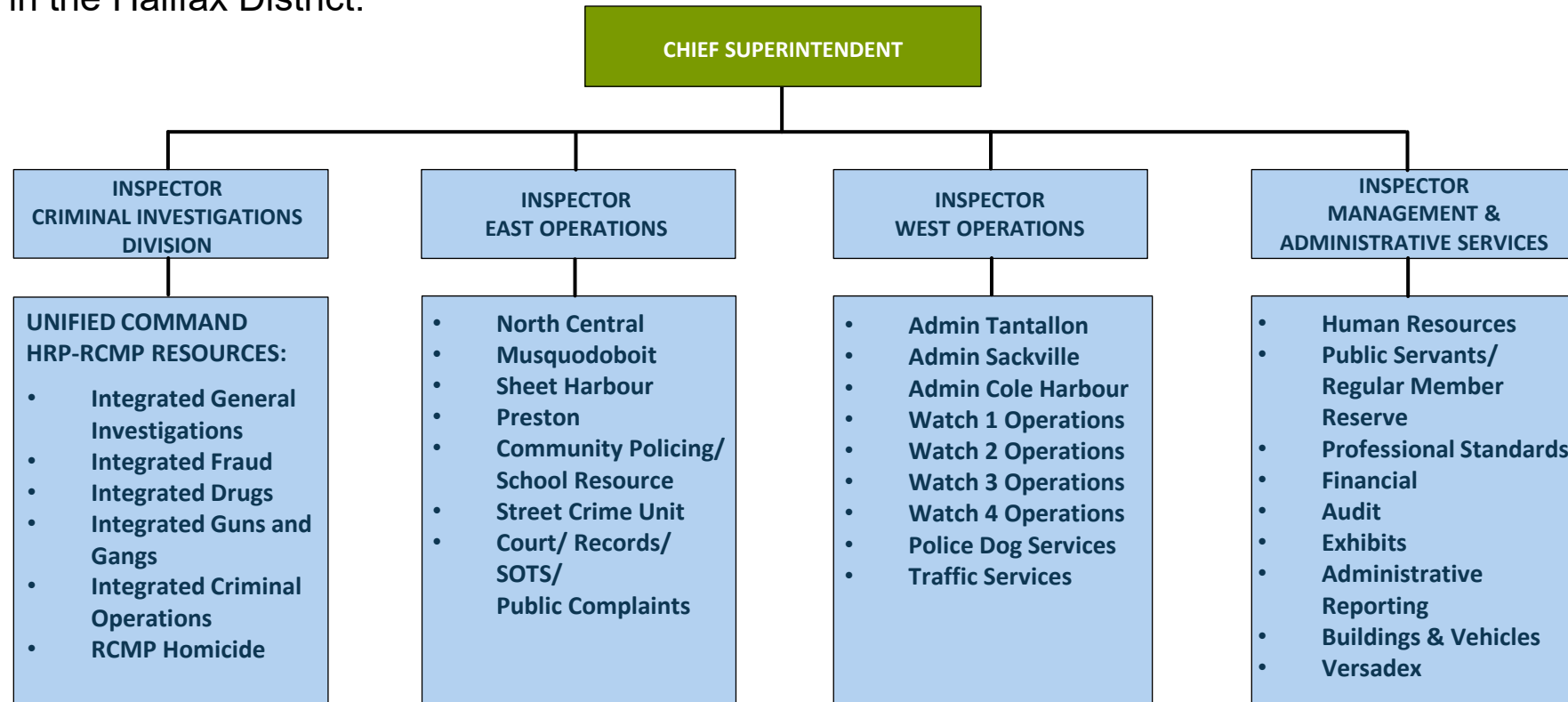
HALIFAX DISTRICT ROYAL CANADIAN MOUNTED POLICE (RCMP)



RCMP ORGANIZATIONAL CHART

OFFICER IN CHARGE – HALIFAX DISTRICT

Provides leadership, strategic direction and financial stewardship in consultation with the municipality and RCMP Nova Scotia Financial Management. Also provides oversight for all operational and administrative responsibilities for the RCMP in the Halifax District.



ABOUT US

SERVICE DELIVERY AREA

95% of HRM land mass

POPULATION SERVED

188,864 or 43% of HRM residents

TOTAL CALLS FOR SERVICE YTD Nov 30, 2022

52,311

4 year average 52,119



ABOUT US (2022 JAN 1 TO NOV 30)

CRIMINAL CODE CHARGES



SPEEDING TICKETS



IMPAIRED DRIVING CHARGES



MENTAL HEALTH OCCURRENCES



THEFT FROM MOTOR VEHICLES INVESTIGATIONS



BREAK AND ENTER INVESTIGATIONS



HIGHLIGHTS

CRIME REDUCTION FOCUS SERVICE EXCELLENCE

Investigations

- Nova Scotia Power copper wire thefts – suspects arrested
- ComStat – places/problems/patterns/people
- Operation Breach

OUR PEOPLE

3069 hrs or training year to date

Body worn camera project pilot site

SERVICE EXCELLENCE

World Sailing Championships in St. Margaret's Bay



COMMUNITIES

First Councillor ComStat session Nov 2022

7 HRM Councillors hosted at Depot Division June 2022

Consistent engagement through local community meetings

North Preston Community Program Officer Coordinator

CURRENT & PLANNED INITIATIVES

COMMUNITIES – SAFE COMMUNITIES

- Community survey
- Halifax District Vision 2025

SERVICE EXCELLENCE – EXCEPTIONAL CUSTOMER SERVICE

- Communications strategy – stakeholder engagement
- Technology
- Councillor ComStat



CURRENT & PLANNED INITIATIVES



OUR PEOPLE - DIVERSE, INCLUSIVE & EQUITABLE ENVIRONMENT

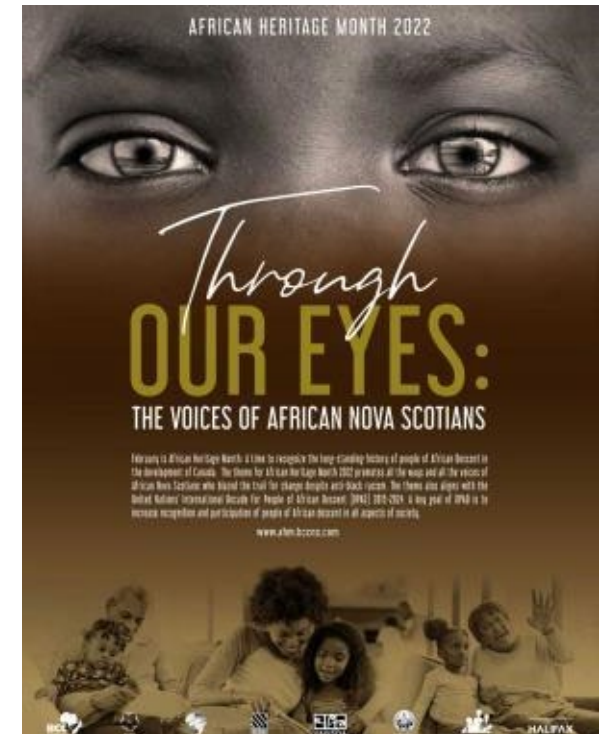
- RCMP National and H Division Equity, Diversity & Inclusion Strategy
- Continued consultation with Indigenous and African Nova Scotian Communities
- *Halifax, Nova Scotia: Street Checks Report* recommendations
- ACE Program
- Indigenous history Blanket Exercise

OUR PEOPLE – HEALTHY & SAFE WORKPLACE

- Employee wellness
- Employee recognition

OUR PEOPLE – ENGAGED & SKILLED PEOPLE

- Succession planning and professional development



OPERATING BUDGET

STAFF COUNTS

Full-Time Equivalent	2021/22 Budgeted FTEs	Transfers (+/-)	Changes (+/-)	2022/23 Budgeted FTEs	\$ Budget Change
Operating	184.0			184.0	-
Capital					N/A
Total	184.0	-	-	184.0	\$ -

Full-Time Equivalent – includes full-time, part-time and permanent positions. Calculated value is based on the normal working hours of each position.

Halifax RCMP Pop to Cop*: 1026

*'Pop to Cop' is number of residents to each sworn officer position

Comparators

Abbotsford Police Department 153,524 (pop) / 239 sworn officers = 642

Barrie Police Service 154,000 (pop) / 245 sworn officers = 628

(source police service websites)

Land mass and population growth

RCMP jurisdiction in HRM is experiencing new residential and commercial growth at an increasing rate raising pressure on resources.

2016 to 2021 Census data shows 11.15% population increase in Halifax RCMP jurisdiction.

RCMP jurisdiction covers 5202 square kilometres of Halifax Regional Municipality



Policing pressures: Mental Health – Social issues

Pressures on police are more complex and resource driven than ever before, often due to underlying community / societal problems.

Require multiple partners to address.

Mental Health calls have risen 70% between 2014 and 2019 with the trend continuing.

Mental Health calls place significant pressure on existing front line resources through crisis intervention and de-escalation.

Mobile Mental Health Team resources are not always available to rural resources.

Lack of alternative for the public when experiencing a mental health crisis.



ROAD SAFETY

over **5700** calls for services related to driving offences in 2021
driving complaints are one of the highest call volumes

Impaired driving **distracted driving** **aggressive driving**
are the top three causal factors of serious injury and fatal collisions

October 2022 Town Hall meetings with Councillors
road safety was clearly a public priority

new and upgraded 100 series highways in Halifax RCMP jurisdiction
Impact traffic flow, volumes and vehicle conflicts

Nova Scotia Highway 107 Extension Sackville – Burnside - Bedford connector
Currently 40,000 vehicles travel Bedford Bypass and Magazine Hill daily



Halifax District RCMP request sixteen (16) front line uniformed resources over the next three fiscal years:

4 in 2023/2024 fiscal

6 in 2024/2025 fiscal

6 in 2025/2026 fiscal

The resources will be funded between Halifax Regional Municipality and Department of Justice based on the existing Provincial Police Services Agreement.

RISKS

Increased response times – urban and rural geography (Tantallon, Sackville)
Road safety / driving complaints – reduced ability to respond on driving complaints
Limited time for self generated work
Reduced ability to complete community or zone patrols to engage with the public
Reduced ability toward fulsome engagement with schools and communities
Reduced ability to address complex and diverse social policing needs
Employee wellness – mental and physical well being of all employees



Chief Superintendent J. Christie
District Policing Officer
Halifax District Royal Canadian Mounted Police

