

Dartmouth North Active Transportation Planning Project



Transportation Standing Committee

October 27, 2022

Chloe Kennedy

Active Transportation Planner

kennedchl@halifax.ca



Policy Direction

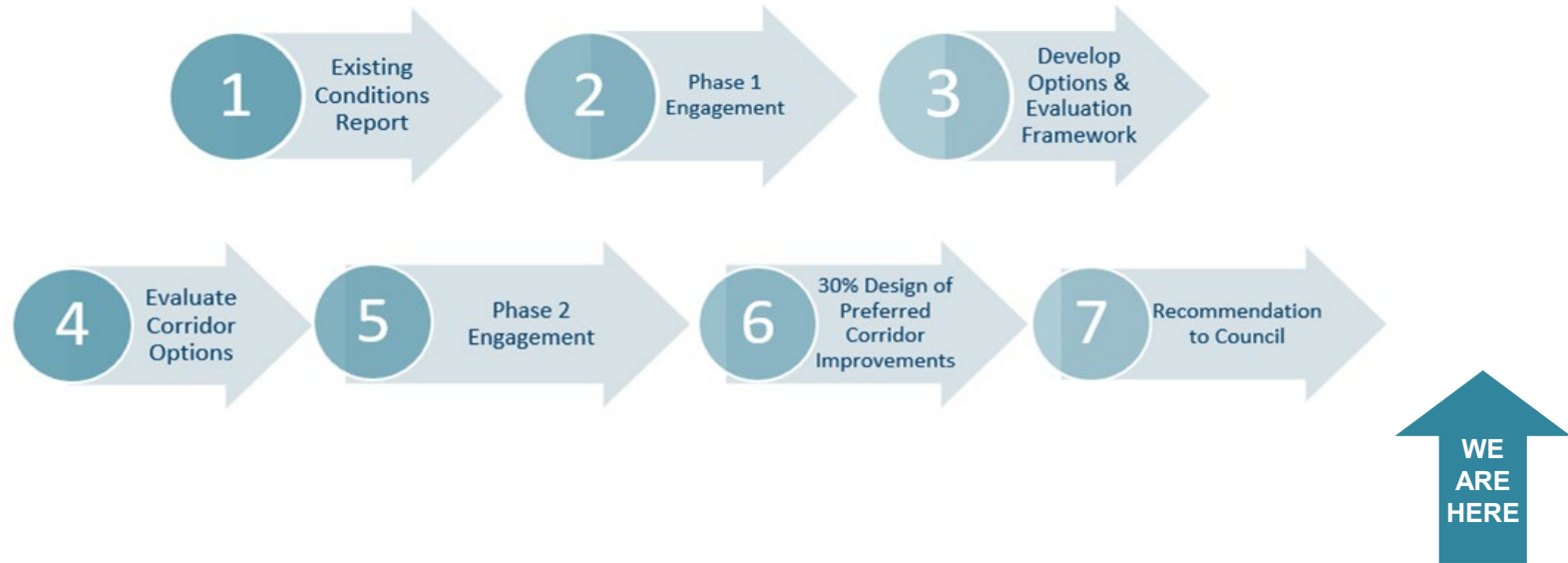


b) Halifax will help to enable year-round bicycling in the “all ages and abilities” bicycle network. This would require additional resources and would be subject to the budgeting process and Council approval.

Action 72: Deliver the Regional Centre all ages and abilities bicycle network by 2022 (see Figure 17).



Functional Planning Process



Project Objectives

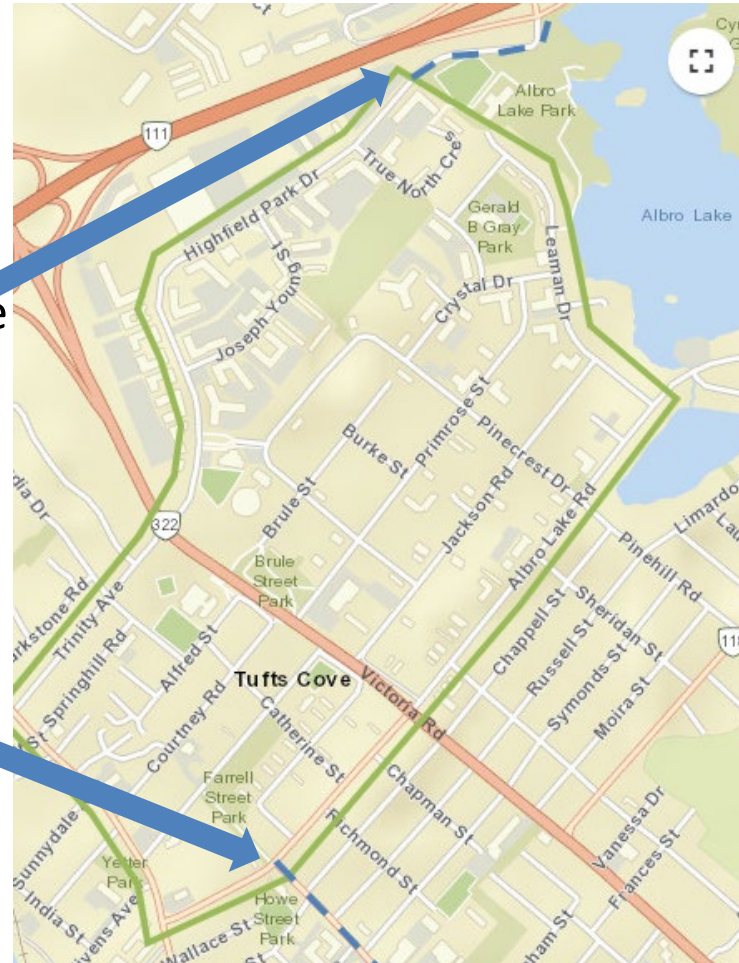
1. Identify improvements for people walking, cycling and taking transit
2. Determine the cycling route and roadway changes to complete this segment of the Regional Centre AAA Network to connect the Burnside Greenway to the Wyse Rd bike lanes



Active Transportation Connections

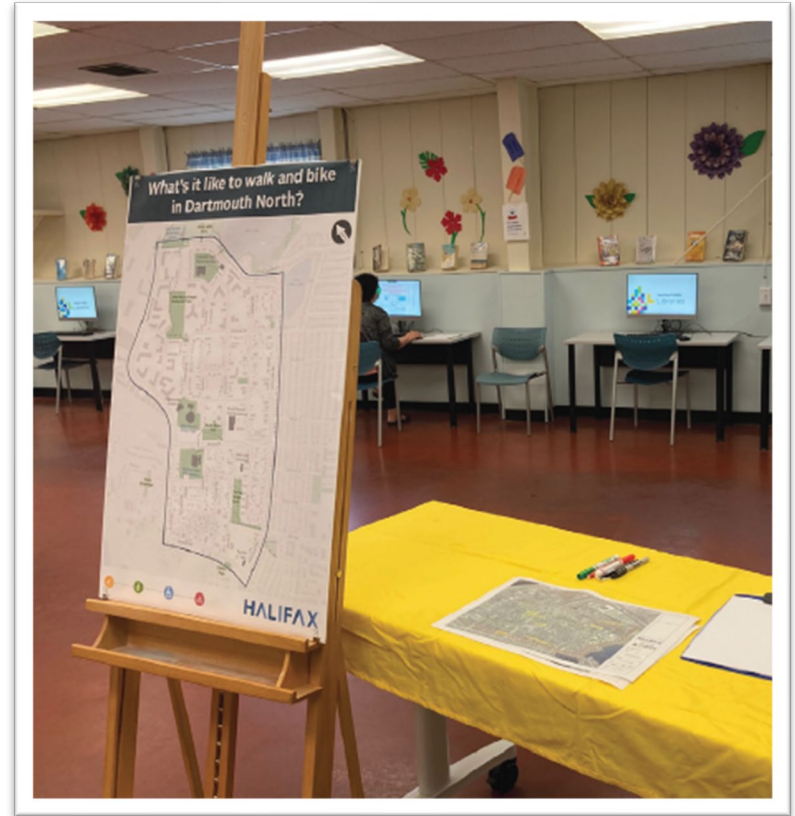
Connection to Burnside
Greenway

Connection to Wyse Road
Bike Lanes



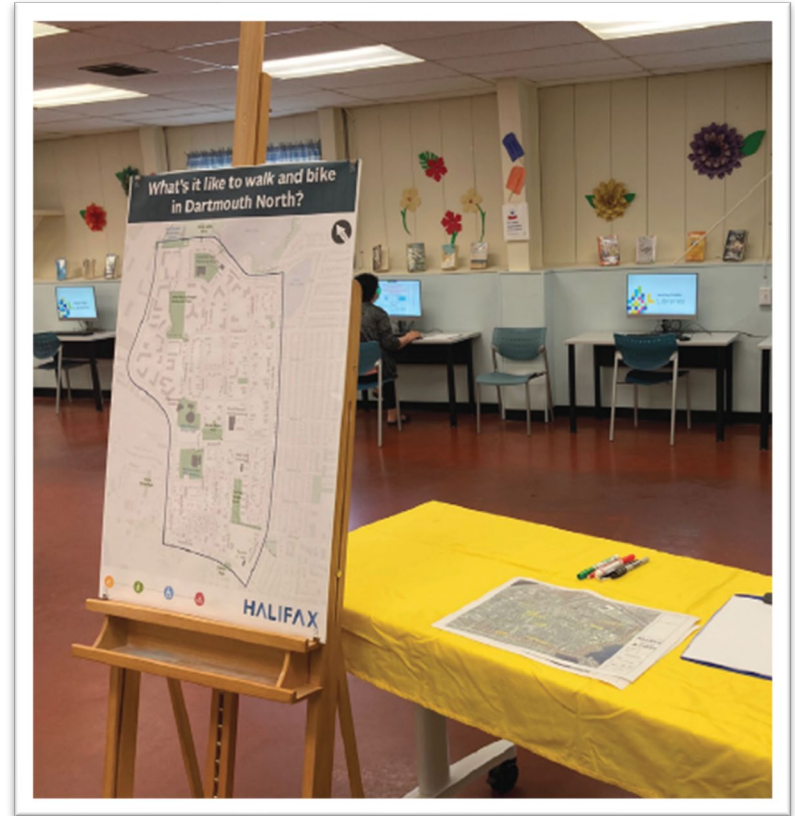
Phase 1 Engagement Purpose

- Identify key community destinations
- How residents get to those destinations
- What are the barriers (if any) to walking and biking to those destinations?



Phase 1 Engagement Methods

- Pop-up Events at the North Grove & Farrell Hall
- Public survey: online and paper copies
- Community stakeholder interviews
- Lived experience interviews with long-term residents



Phase 1 Engagement Promotion



Halifax Regional Municipality

August 9 at 1:00 PM · 🌐

Help us make active transportation better in Dartmouth North!

- ✔️ Take a short survey online
- 📍 Place a pin on our map to tell us where you travel, and any barriers you encounter along the way
- 📄 Get a paper copy of the survey at Farrell Hall

Get started: <https://www.shapeyourcityhalifax.ca/dartmouth-north...>



SHAPEYOURCITYHALIFAX.CA

Dartmouth North Active Transportation Planning Project

The municipality is planning street upgrades and repairs in Dartmo...



Phase 1 Engagement Results

- Local Street Accessibility & Safety Improvements Needed
- Many crossings lack tactile walking surface indicators
- Pinecrest Dr, Brule St and Burke St need repaving and curb replacements
- Opportunities for slowing traffic in some locations



Phase 1 Engagement Results

- Lack of Community Connectivity due to Victoria Rd
- Pedestrian bridge an important connection, but doesn't address AT needs
- Wire fencing preventing pedestrian travel unsightly and counter to desired walking routes



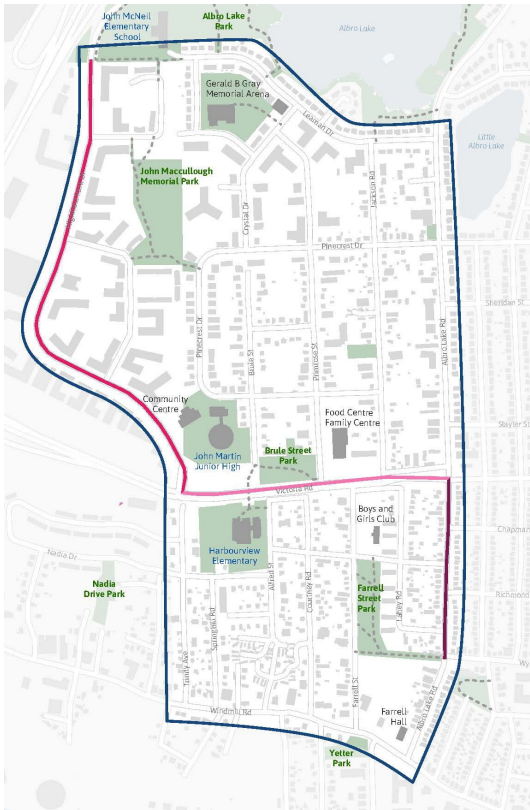
Phase 1 Engagement Results

- Constant Speeding on Major Roads & Intersections

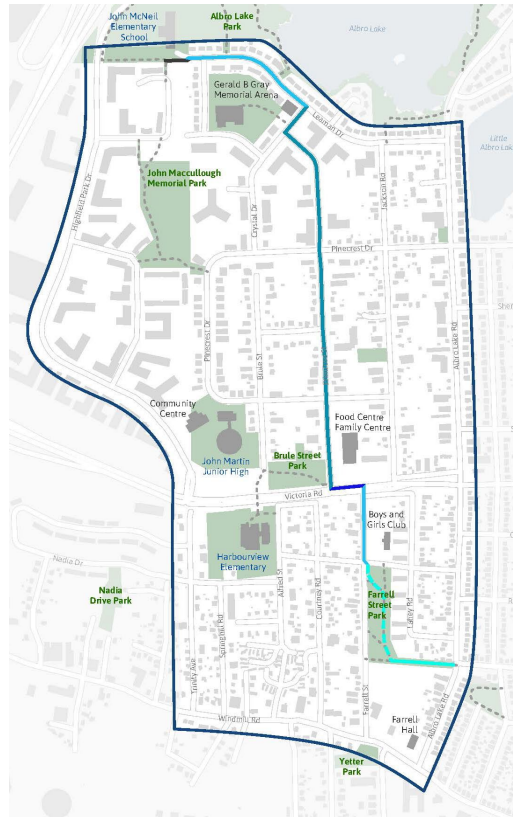


Concept Options

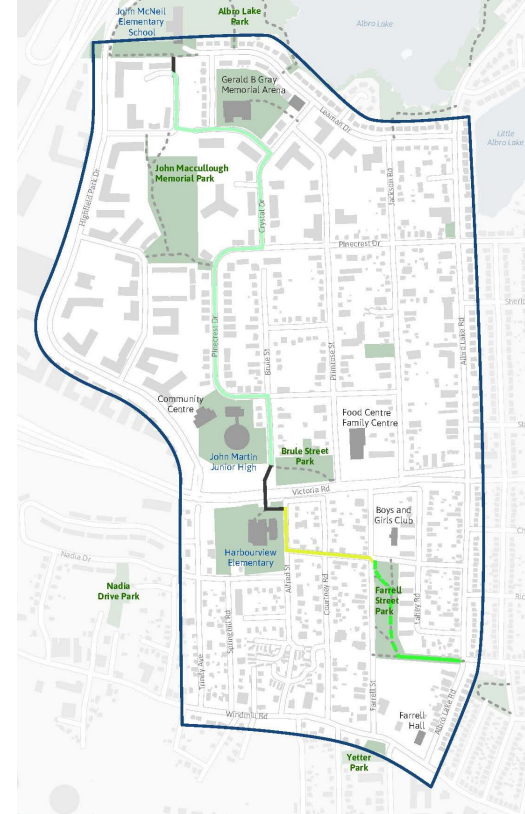
Option 1: Highfield-Victoria-Albro Lake



Option 2: Leaman-Primrose-Farrell



Option 3: True North Cres-Pinecrest-Ped Overpass



Phase 2 Engagement

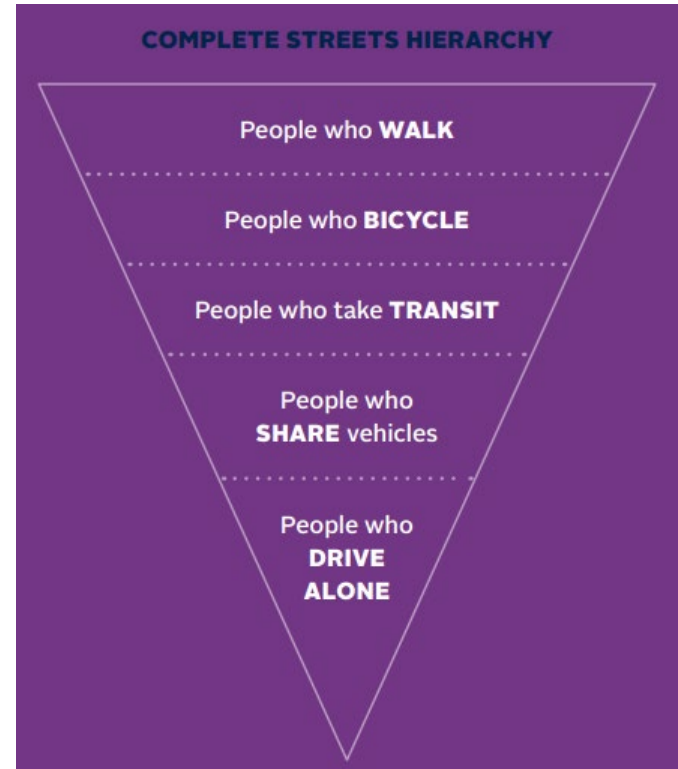
- Neighbourhood stakeholder meeting
- AT advocates stakeholder meeting
- Lived experience focus group
- Online Survey & paper survey
- Pop-up Events at the library
- Presentations to John Martin Jr High & the Islamic Association
- Online, mail out promotion & Art Bikes



Route Evaluation Process

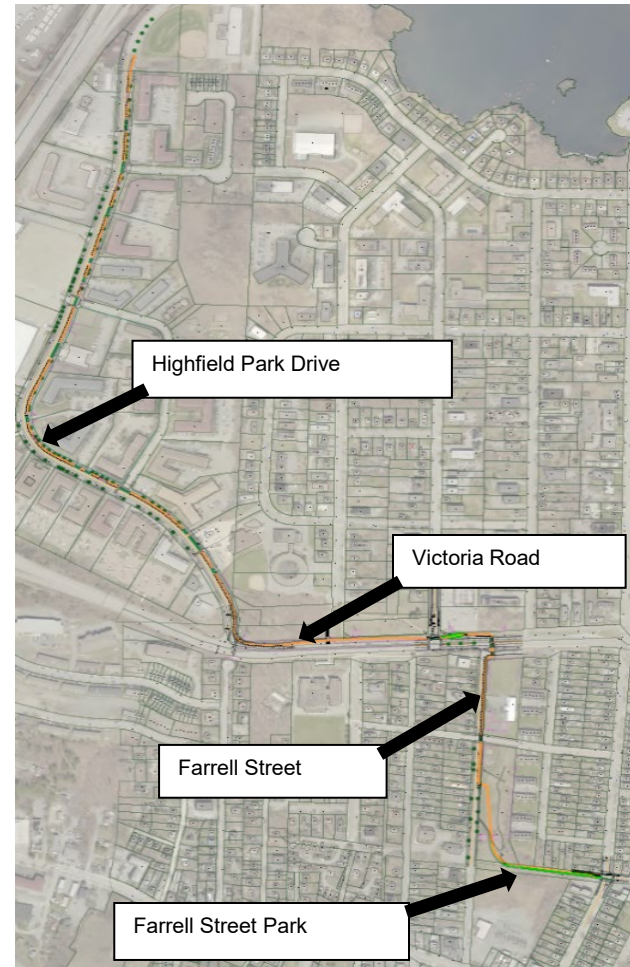
Evaluation Criteria:

- Pedestrian Movement & Safety
- Bicycle Movement and Collision Risk Management
- Safety and Environment Security
- Transit Service Accommodation
- Vehicular and Truck Traffic Infrastructure Provisions
- Parking & Loading Supply
- Trees and Greenspace
- Implementation Feasibility



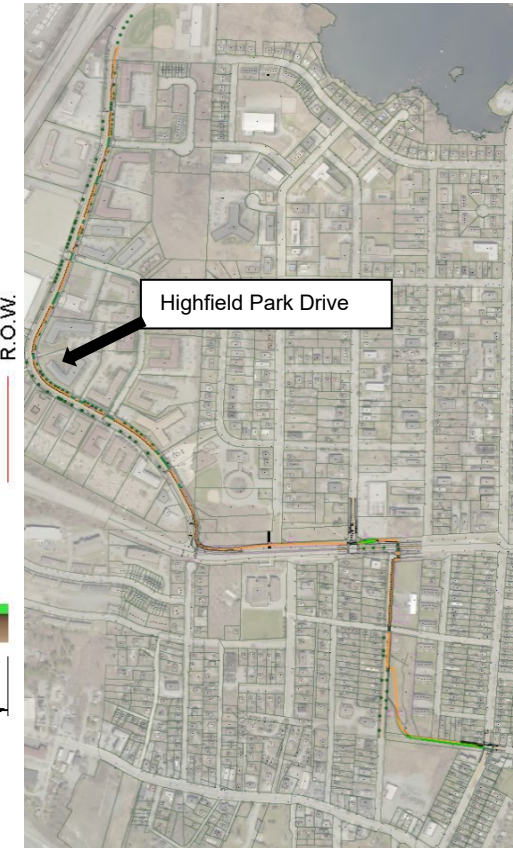
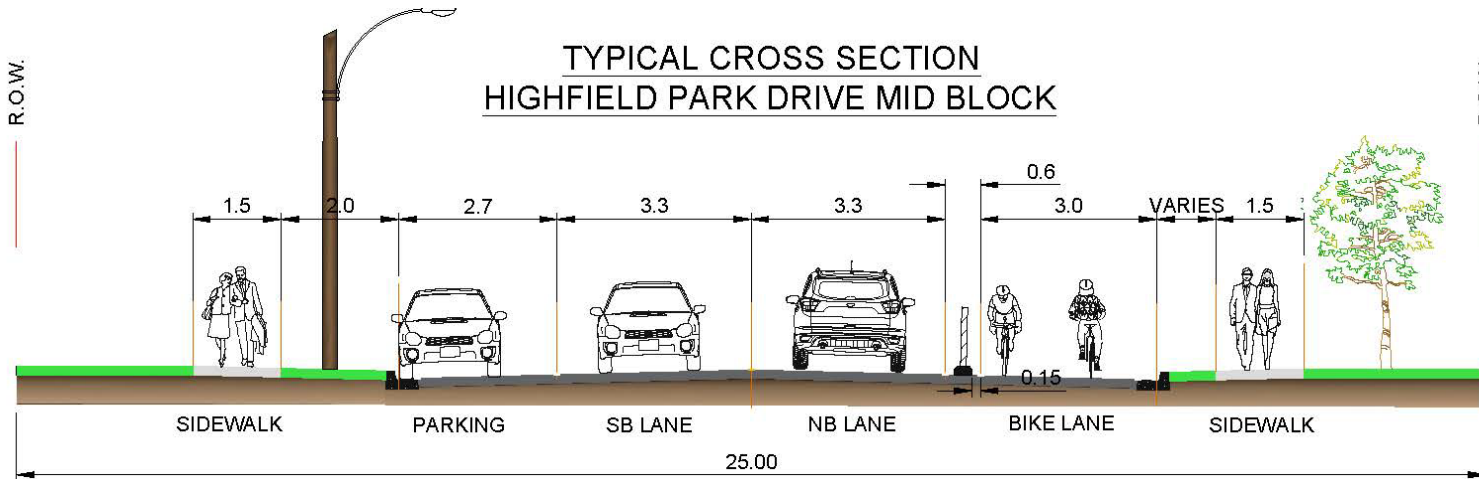
Recommended Route & Facility Type

- Adds a new signalized crossing of Victoria Road at Farrell Street
- Improves the existing crossing of Victoria Road at Highfield Park Drive
- Adds missing sidewalk segment along Victoria Road
- More direct for cyclists
- Bi-Directional Bikeway recommended



Highfield Park Drive

TYPICAL CROSS SECTION
HIGHFIELD PARK DRIVE MID BLOCK

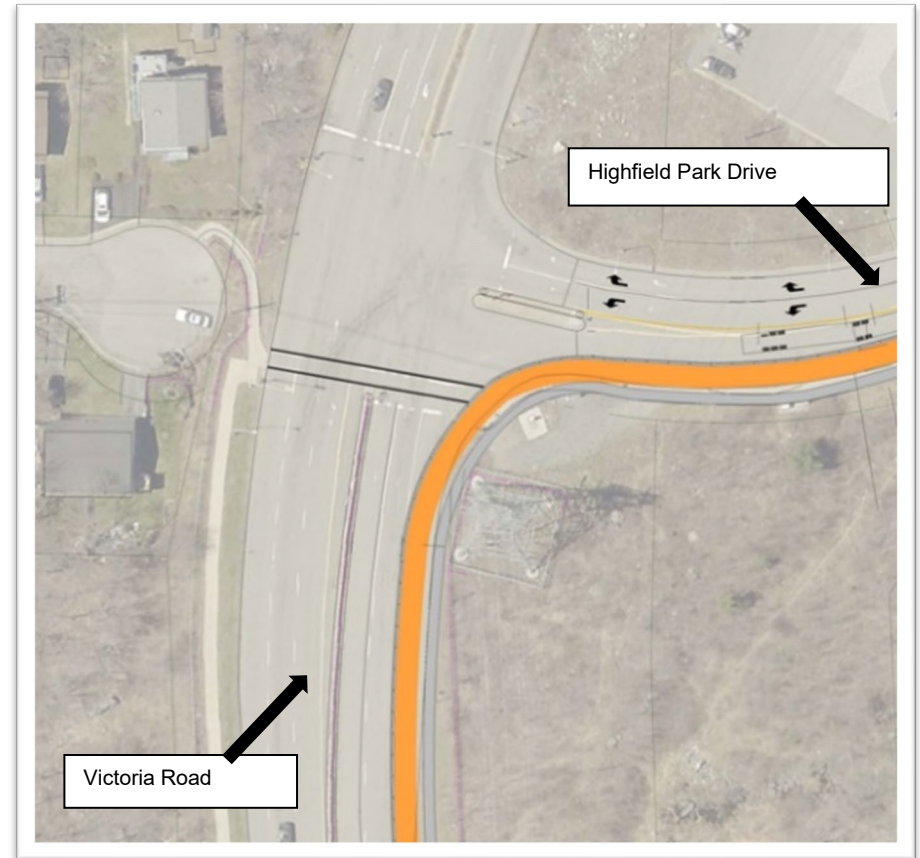


Existing Crossing at Highfield & Victoria



Proposed Intersection Changes

- Removal of the right turn lane to decrease the crossing distance and accommodate AT facilities.
- A bi-directional protected bike lane and sidewalk on the east side of Victoria Road to allow AT users to turn onto Highfield Park Drive.
- Addition of a missing sidewalk connection on Victoria Road from Highfield Park Drive to Brule Street Park



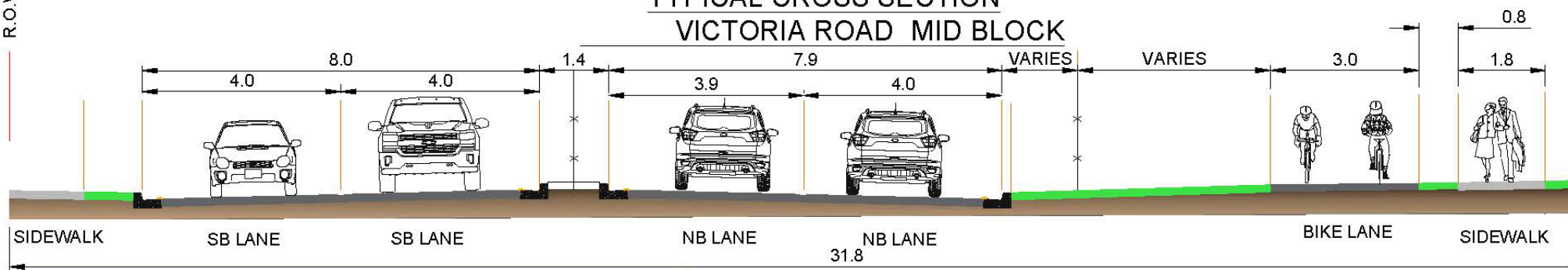
Victoria Road



Victoria Road

R.O.W.

TYPICAL CROSS SECTION VICTORIA ROAD MID BLOCK

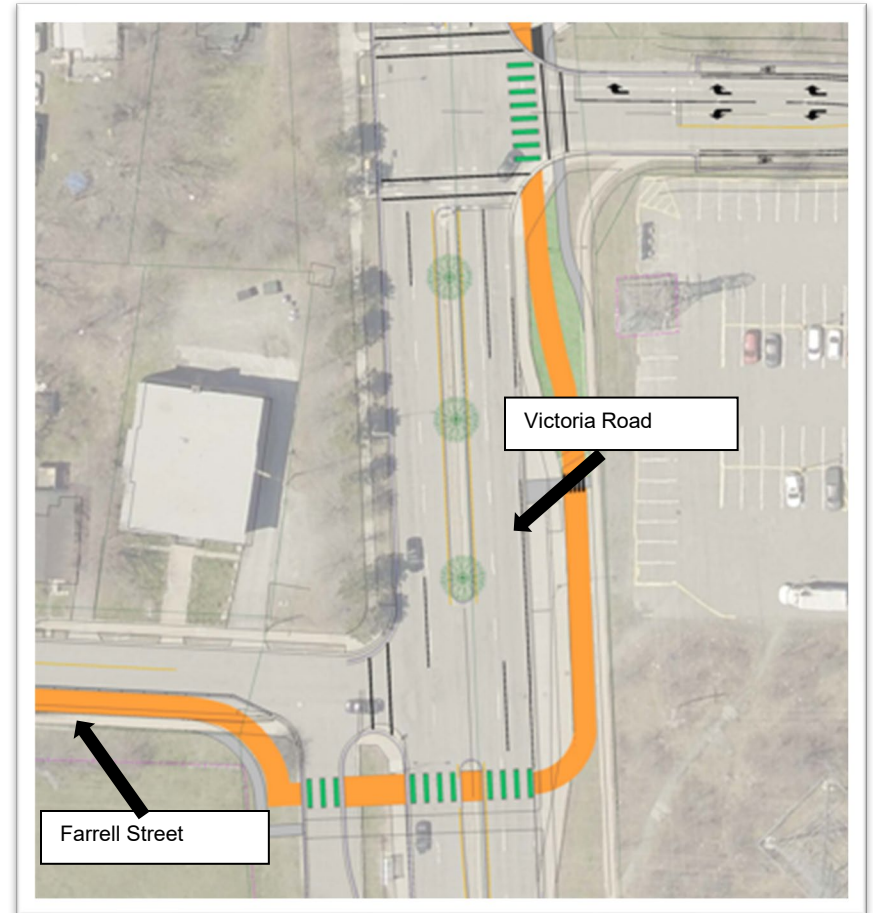


Existing Crossing at Victoria Rd & Farrell St

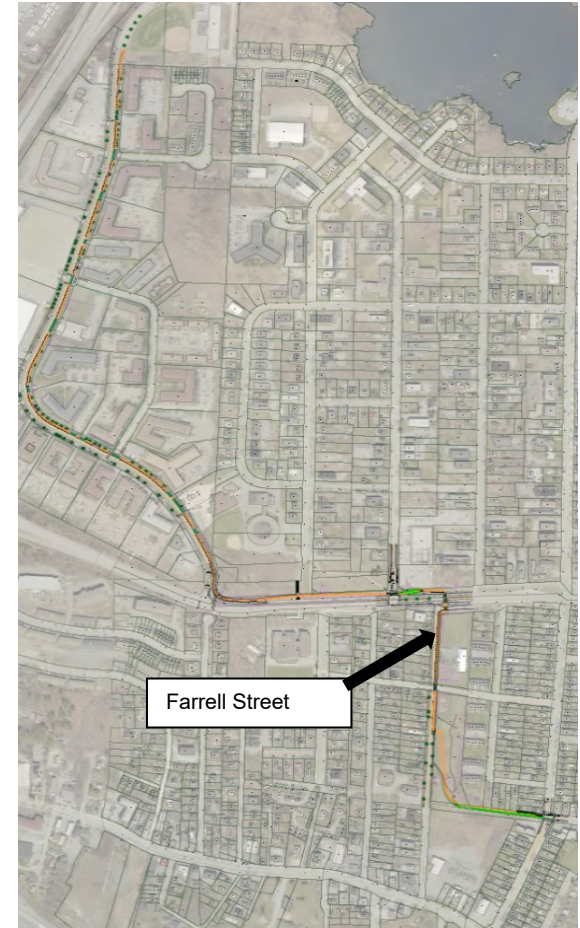
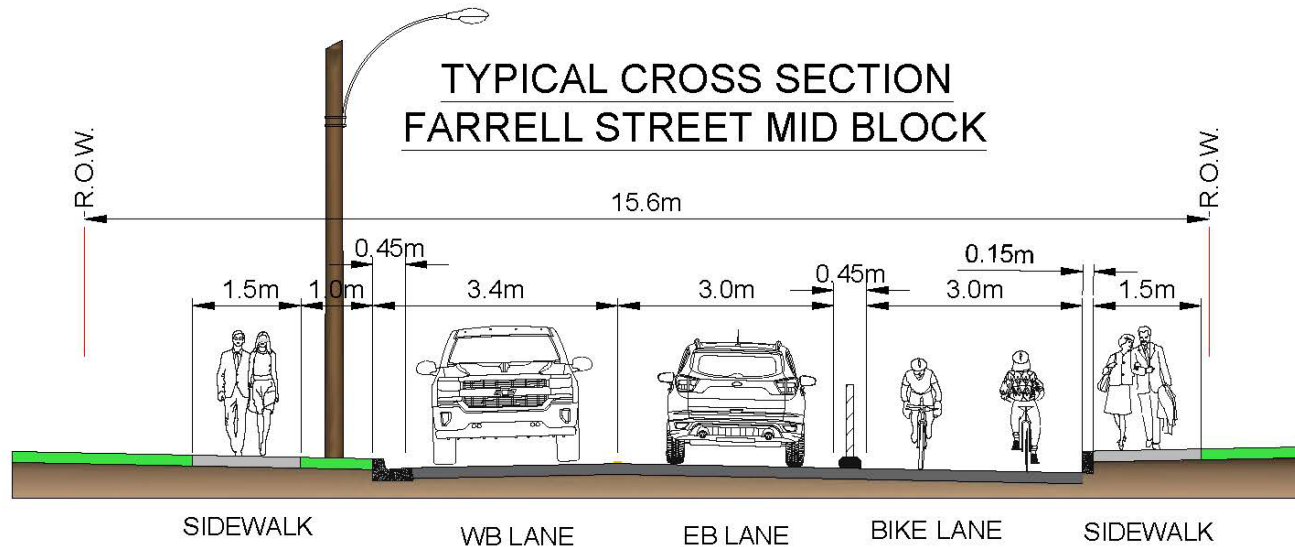


Proposed Intersection Changes

- A new signalized crossing at the intersection of Farrell Street and Victoria Road.
- Widened median on Victoria Road to facilitate safer pedestrian crossings.
- A half signal with separated bicycle and pedestrian crossings. Coordination with the signal at Primrose Street.

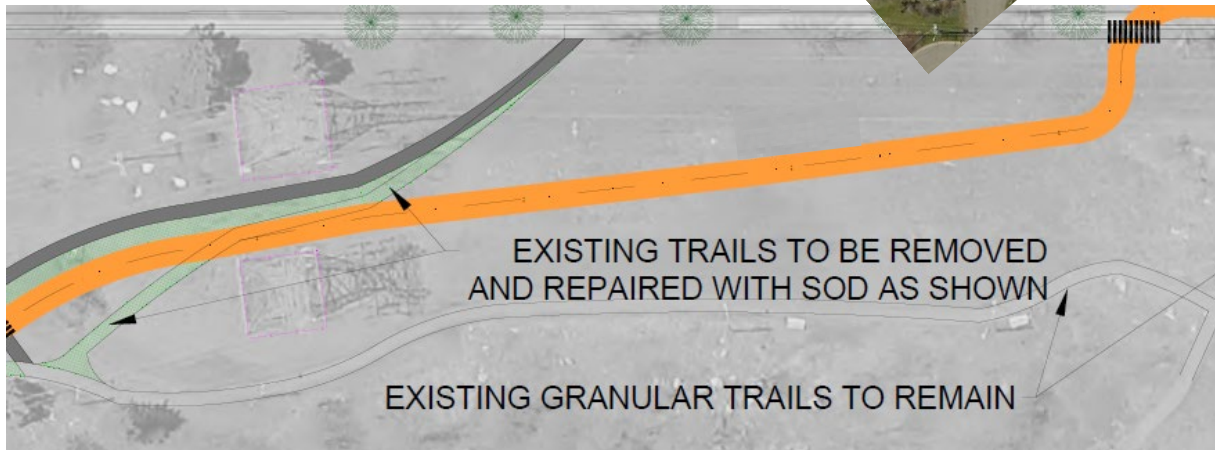
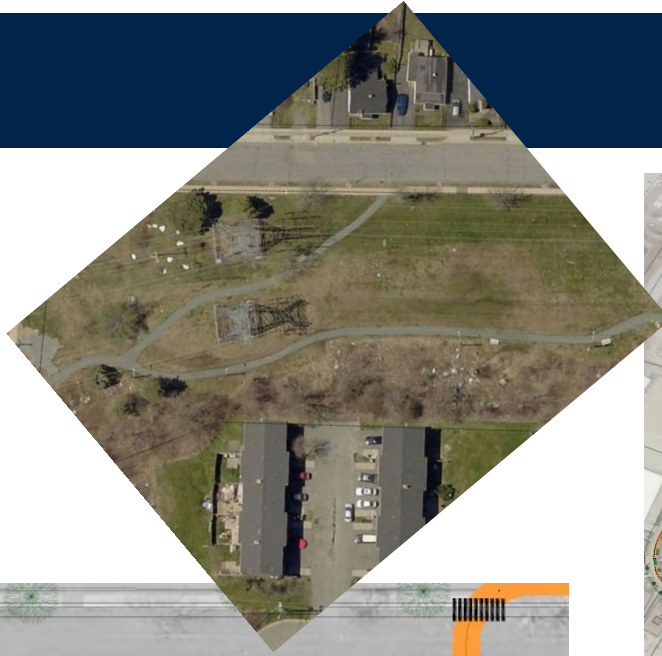


Farrell Street



Additional consultation & planning to confirm this option or an alternate “AAA” facility type

Farrell Street Park



Farrell Street Walkway



Recommended Complete Streets Improvements

Pinecrest Drive, Brule Street & Burke Street

- Better lighting and street trees in more locations
- Traffic calming: curb bumpouts for narrower crossings, speed humps
- Tactile accessibility features added to intersections



Recommended Victoria Road Planning Study

- Complete streets features added to Victoria Road, including street trees and better lighting
- Analysis of traffic volumes to assess vehicle lane requirements
- Transit lane improvements



Questions and Comments

Chloe Kennedy

902-943-1746

kennedchl@halifax.ca



shapeyourcityhalifax.ca/dartmouth-north-active-transportation