

HALIFAX

2022 District Boundary Review – Phase Two

Harbour East-Marine Drive Community Council

Ground Rules

- **Respect** – *it's ok to have different opinions*
- **Focus** – *keep comments on point so we can hear from as many people as possible (5minute max.)*
- **Other forms of feedback** – *survey available at: [Halifax.ca/boundaryreview](https://halifax.ca/boundaryreview)*
- **For specific questions or concerns about something in your district or neighbourhood, please contact the Municipal Clerk's Office by email at clerks@halifax.ca or call 311.**

Background

The Municipal Government Act (MGA) requires that all municipalities in Nova Scotia conduct a review of the number and boundaries of polling districts in the municipality on a regular basis

Council makes an application to the Nova Scotia Utility and Review Board (NSUARB), which will make the final decision on municipal polling districts and boundaries

The most recent review was conducted in 2014 and the resulting district boundaries are currently in effect

A district boundary review is required in 2022; changes coming from this review will not come into effect until the 2024 Municipal Election.

The Review is broken down into two phases



NOVA SCOTIA
UTILITY AND REVIEW BOARD

HALIFAX

Phase One

In the spring of 2022, the first phase of a District Boundary Review study was undertaken in HRM with the aim of determining the number of Municipal Polling Districts appropriate to the Municipality, as well as to review the governance structure of HRM

Results of that initial phase recommended that the number of polling districts and councillors for the municipality should remain at 16



Phase Two



- Sets specific boundaries
- Aims to gather opinions from residents of HRM about proposed new district boundaries for the 16 districts
- Councillors on Halifax Regional Council each represent an average of approximately 23,000 electors
- Public Engagement activities are led by the District Boundary Resident Review Panel as part of their mandate to advise Halifax Regional Council on the district boundaries
- There are different ways that boundaries of districts can be determined within the Municipality, and there are five different criteria that must be considered when creating the districts
- Proposed amendments polling boundaries do not impact municipal services, taxation, area rates, school boundaries or emergency services

Requirements



The five criteria are [Section 368 (4)] of the MGA:

- **Number of electors** (that is, how many electors each councillor represents)
- **Relative parity of voting power** (that is, all districts have roughly the same number of electors so that each vote carries the same weight). In considering relative parity of voting power the target variance is +/-10% per district. Voter parity of up to +/- 25 % is permitted in some circumstances with appropriate justification
- **Population Density** (that is, the number of people per square kilometre living in a district)
- **Communities of Interest** (includes: existing communities, historical connections, recreational issues, tax and area rates, water and sewer boundaries, traffic infrastructure and patterns, planning boundaries, school districts, shopping patterns and business centres, language, and ethnic origin)
- **Geographic Size** (that is, districts are defined by geographic features and the geographic size of each district)

District Boundary Resident Review Panel

- Citizen led volunteer panel created to advise Regional Council, through Executive Standing Committee, on the boundaries of the municipal electoral districts for the Municipality as part of Phase Two of Council's process to develop its application to the Nova Scotia Utility and Review Board for the 2022 District Boundary Review
- Responsible for conducting the public engagement activities for Phase Two with the support of HRM staff



Phase Two Public Consultation Process





 District Boundary Resident Review Panel (DBRRP) presents the proposed boundary changes to the public for feedback

 DBBRP receives report on public feedback from Narrative Research

 Revisions to the proposed boundaries are made based on public feedback

 DBRRP submits its final report and recommendation on Phase Two to Executive Standing Committee on November 28, 2022

 Executive Standing Committee forwards a recommendation to Regional Council

 Regional Council receives the report from the DBRRP and makes final decision on proposed boundary changes – December 2022

 Application is submitted to the Nova Scotia Utility and Review Board by December 31, 2022

Population Growth

- Population growth will influence the Boundary Review process now and in future reviews
- Increases in population do not happen equally across the HRM
- In considering relative parity of voting power (i.e. that all districts have roughly the same number of electors so that each vote carries the same weight), the target variance is +/- 10%“



Current Population/ Number of Electors

- Since the 2010 review, the HRM has grown by 67,392 residents to a total of 440,071
- The Halifax Regional Municipality is in the top six (6) of the 25 largest municipalities in Canada with a 9.1% population growth rate from 2016-2021



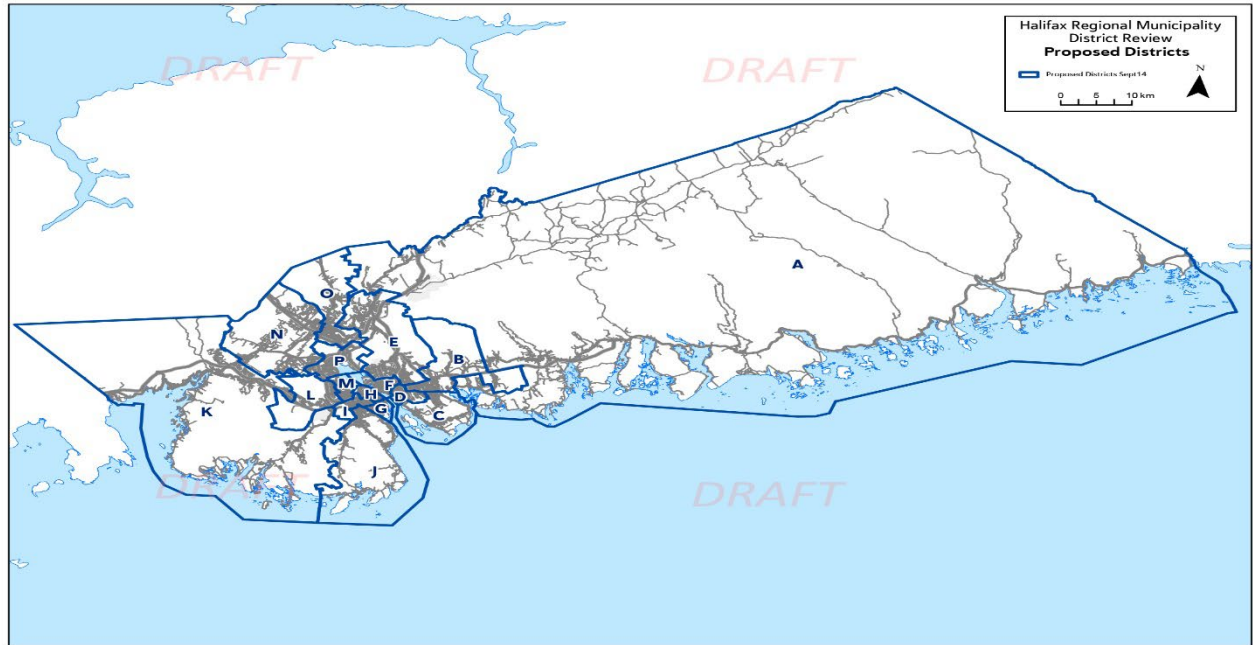
Current District Number of Electors and Population by 2024

Electoral District	Current # of Electors (2021)	Voter Parity Variance +/- 10 (2021)	Projected # of Electors by 2024
01-Waverley-Fall River-Musquodoboit Valley	18,642	-19.9%	19,589
02-Preston-Chezzetcook-Eastern Shore	22,527	-3.2%	23,319
03-Dartmouth South-Eastern Passage	25,952	+11.6%	27,045
04-Cole Harbour-Westphal-Lake Loon-Cherry Brook	21,085	-9.4%	21,813
05-Dartmouth Centre	25,529	8.6%	26,358
06-Harbourview-Burnside-East Dartmouth	21,865	-6%	22,706
07-Halifax South Downtown	26,802	+15.2%	28,276
08-Halifax Peninsula North	25,499	9.6%	26,264

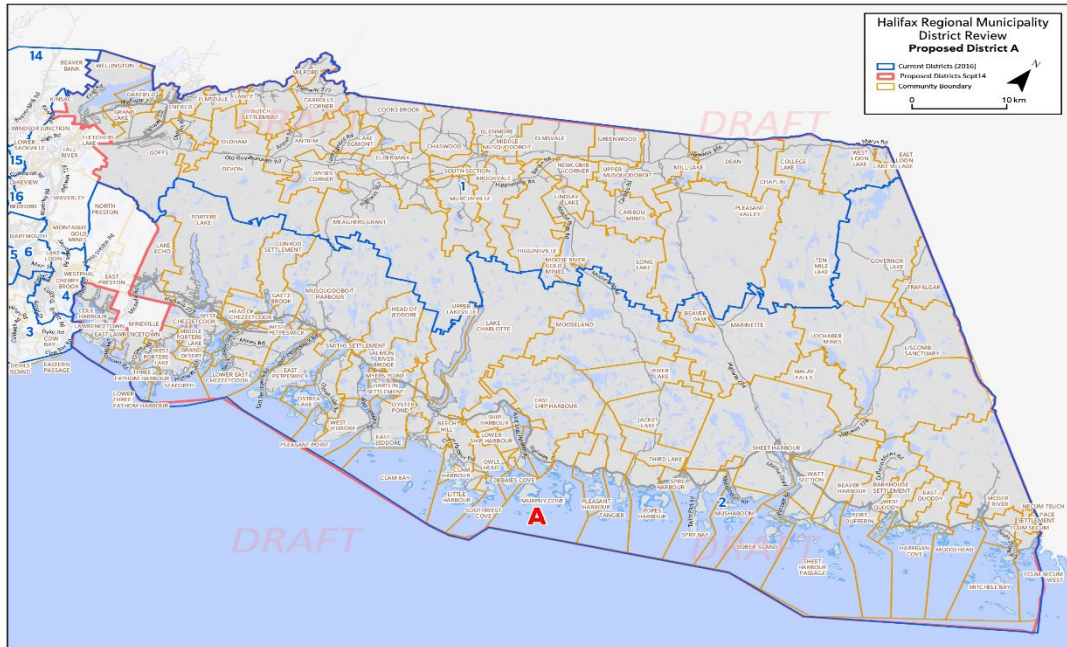
Continued

Electoral District	Current # of Electors (2021)	Voter Parity Variance +/- 10 (2021)	Projected # of Electors by 2024
09-Halifax West Armdale	24,703	6.2%	25,505
10-Halifax Bedford Basin-West	22,950	-1.4%	23,707
11-Spryfield-Sambro Loop-Prospect Road	22,892	-1.6%	23,909
12-Timberlea-Beechville-Clayton Park-Wedgewood	25,580	10%	26,886
13-Hammonds Plains – St. Margarets	22,098	-5%	23,465
14-Middle/Upper Sackville – Beaver Bank - Lucasville	20,458	-12%	21,646
15-Lower Sackville	18,881	-18.9%	19,891
16-Bedford-Wentworth	27,010	+16.10%	28,283
Total	372,203		388,861
Average	23,262		24,291

Proposed Districts



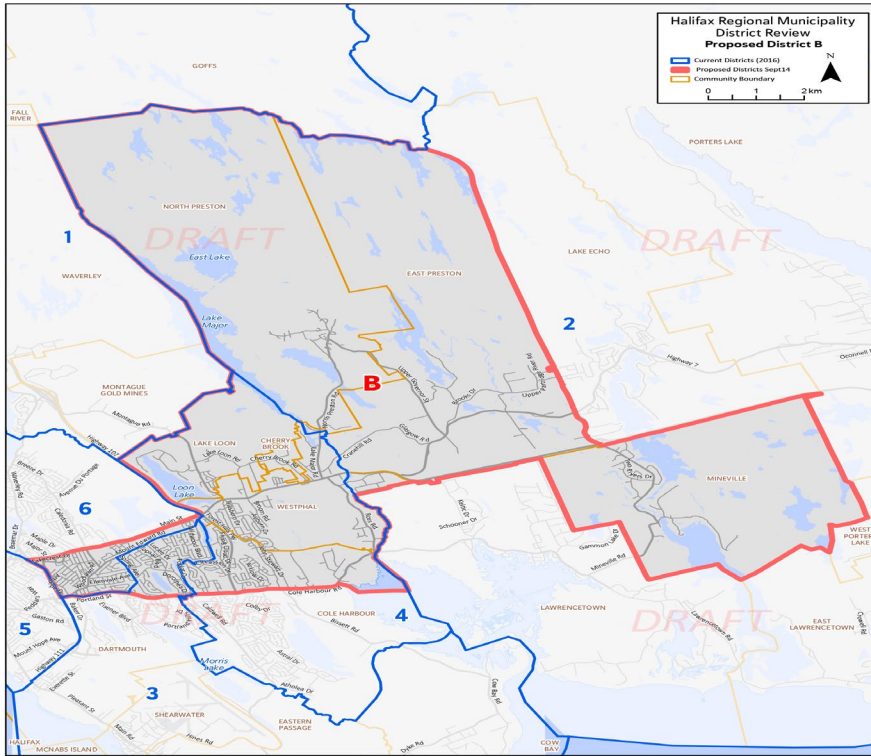
Proposed District A



Proposed District A

- Proposed District A encompasses most of the communities in existing Districts 1 and 2 with the exception of the following suburban communities: Fall River, Windsor Junction, Fletchers Lake, Waverly, Lakeview, Montague Gold Mines, Mineville, North Preston, and East Preston;
- The district is comprised primarily of rural communities which have similar needs for infrastructure, recreation and municipal services;
- The proposed elector count is slightly over the +10% variance at 26,665 electors however it could be justified given the limited amount of growth anticipated in the next ten years

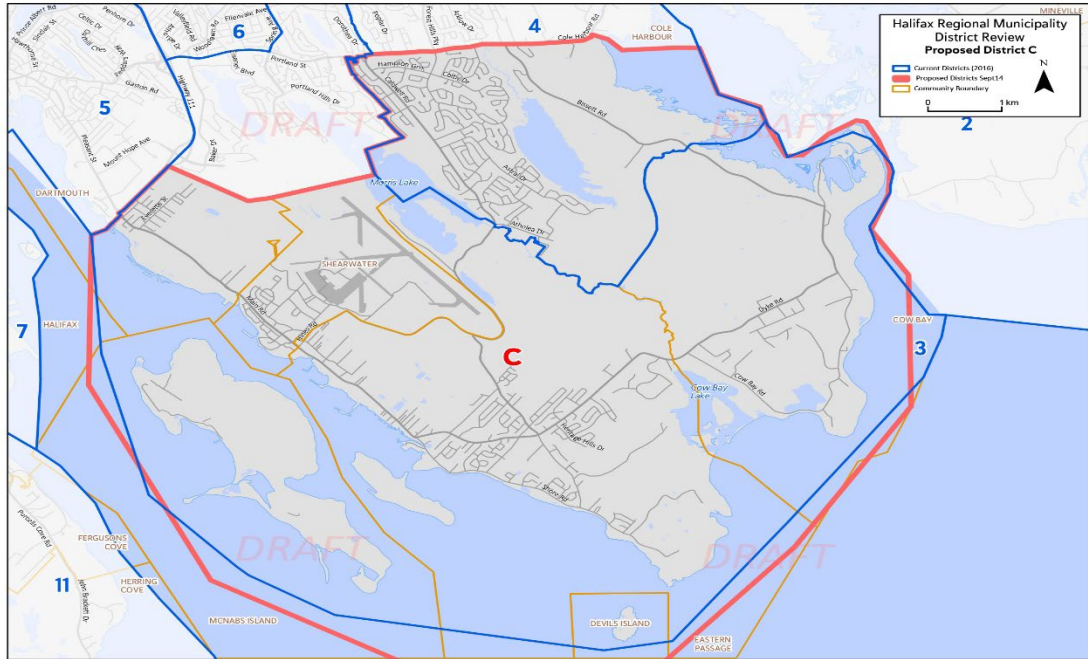
Proposed District B



Proposed District B

- Proposed District B encompasses portions of existing Districts 2, 3, 4, and 6. It includes the communities of North Preston, East Preston, Mineville, Westphal, Cherry Brook, Lake Loon, and portions of Cole Harbour and Dartmouth
- The proposed elector count falls within the +/- 10% variance at 24,144 and allows for future growth
- Brings the historic African Nova Scotian Communities of North Preston, East Preston, Westphal, Cherry Brook and Lake Loon into one district

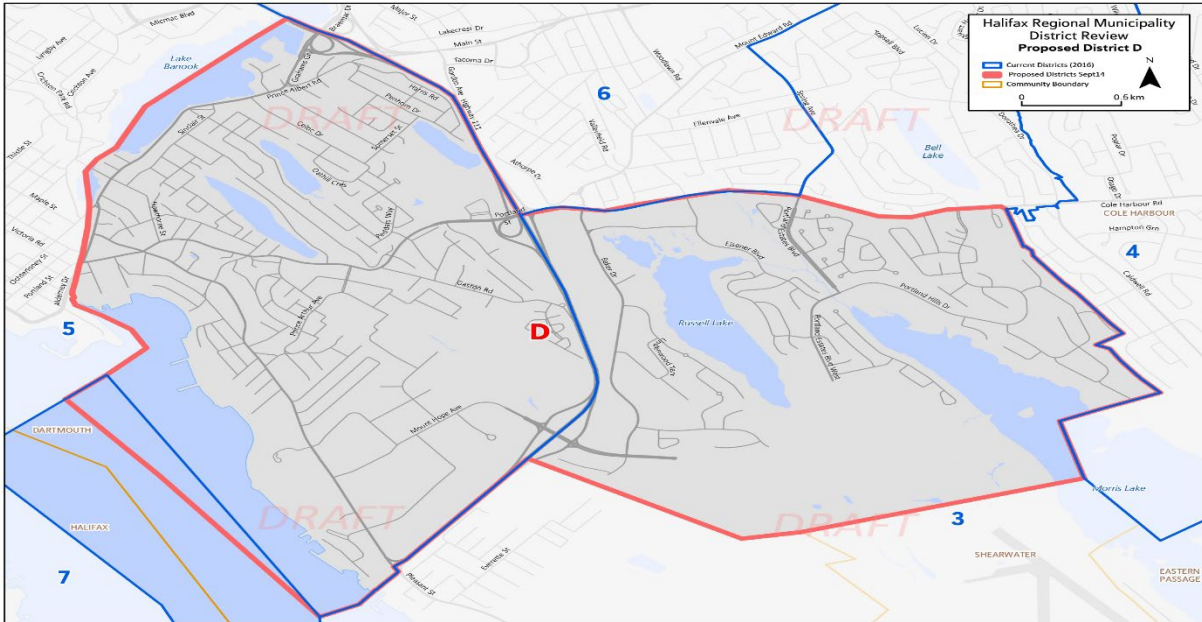
Proposed District C



Proposed District C

- Proposed District C encompasses communities within the existing District 3 and parts of existing District 4. This proposed district includes the communities of Cow Bay, Eastern Passage, Shearwater, and portions of Dartmouth and Cole Harbour. It also includes Devil's, McNab's and Lawlor Islands
- The estimated elector count falls within the +/-10 percent variance at 21,407 electors. This allows for future growth which is anticipated
- The proposed district follows existing community, planning and school boundaries and considers existing communities of interest

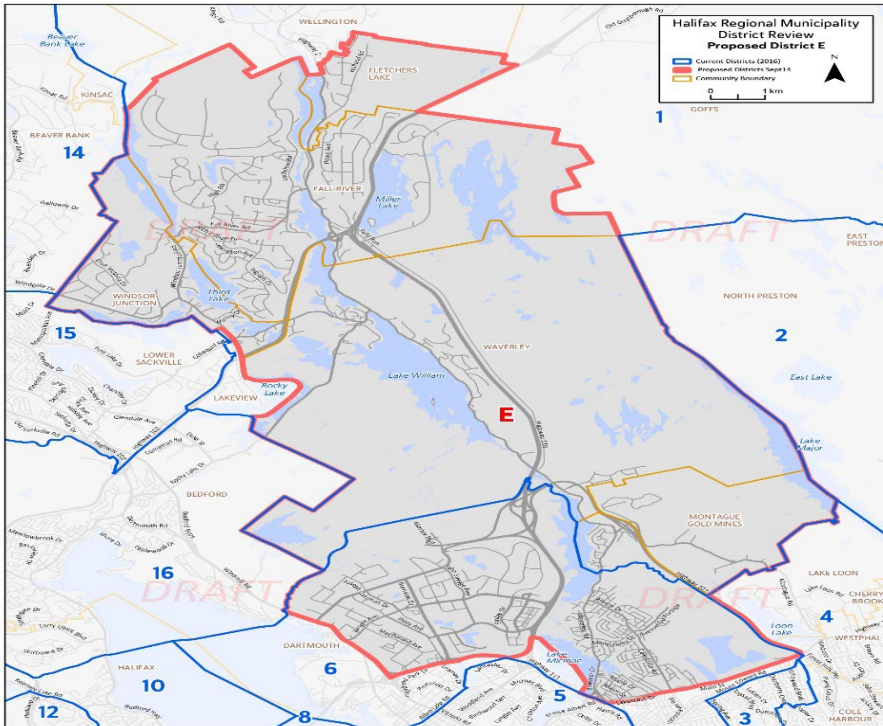
Proposed District D



Proposed District D

- Proposed District D encompasses portions of existing Districts 3 and 5 in Dartmouth
- Proposed District D considers communities of interest with the boundaries following existing community, planning and school boundaries, and maintaining generally urban communities
- The estimated elector count is slightly below the +/- 10 % variance at 19,843 allowing for growth and development which is anticipated in future years

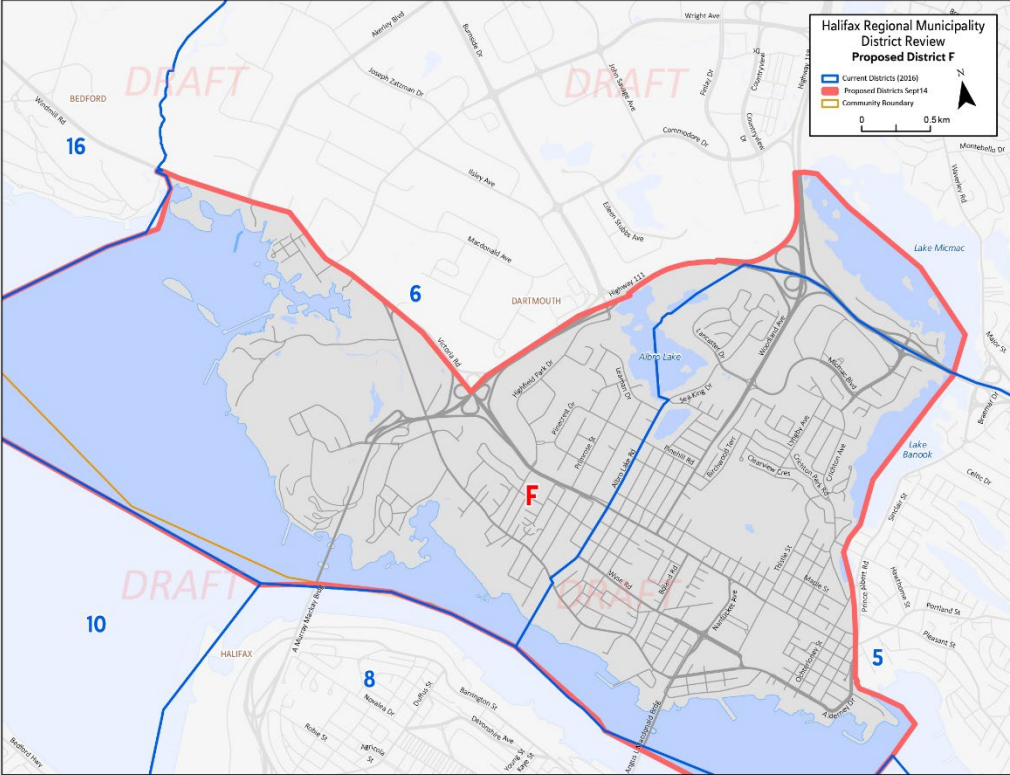
Proposed District E



Proposed District E

- Proposed District E includes the communities removed from current District 1 as follows: Fall River, Fletchers Lake, Montague Gold Mines, Waverley, and Windsor Junction. The proposed district also includes portions of Dartmouth found currently in existing district 6
- Proposed District E considers communities of interest by linking the rural and suburban communities within and outside of Dartmouth with those of Fall River, Fletchers Lake and Windsor Junction
- The estimated elector count is slightly below the +/-10 % variance at 20,366 but this is being recommended due to significant future growth anticipated with the Port Wallis Special Planning Area

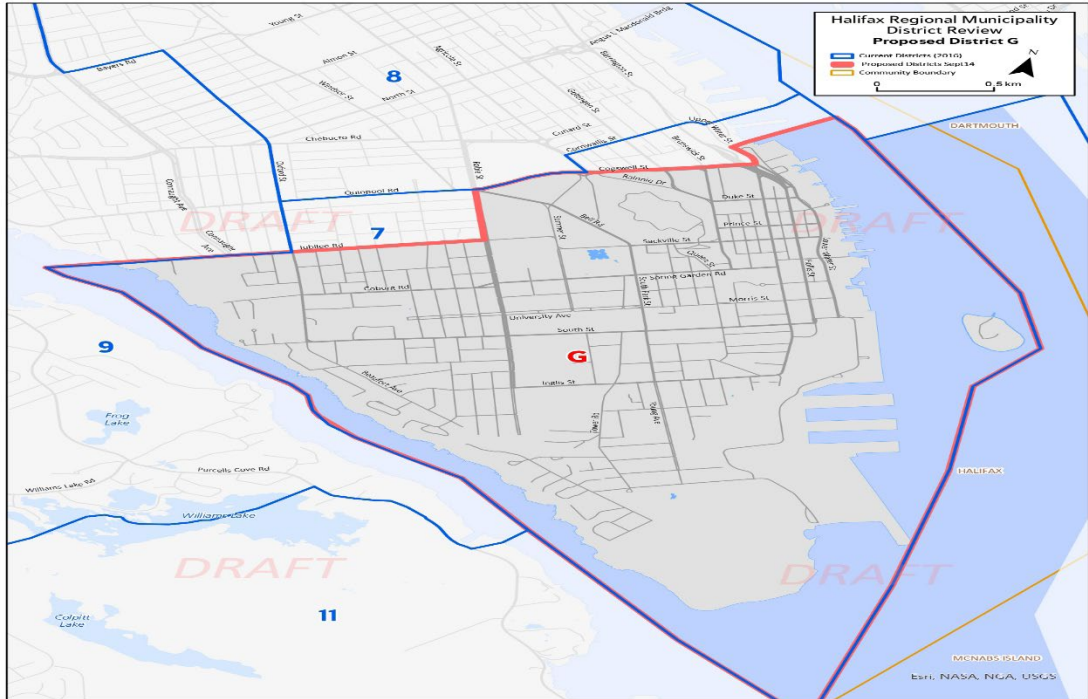
Proposed District F



Proposed District F

- Proposed District F encompasses portions of existing Districts 5 and 6 in Dartmouth
- The estimated number of electors falls within the +/- 10% variance at 22,503 and allows room for future growth which is anticipated with several higher order residential and special planning area designations
- Proposed District F considers established communities of interest following community and school boundaries

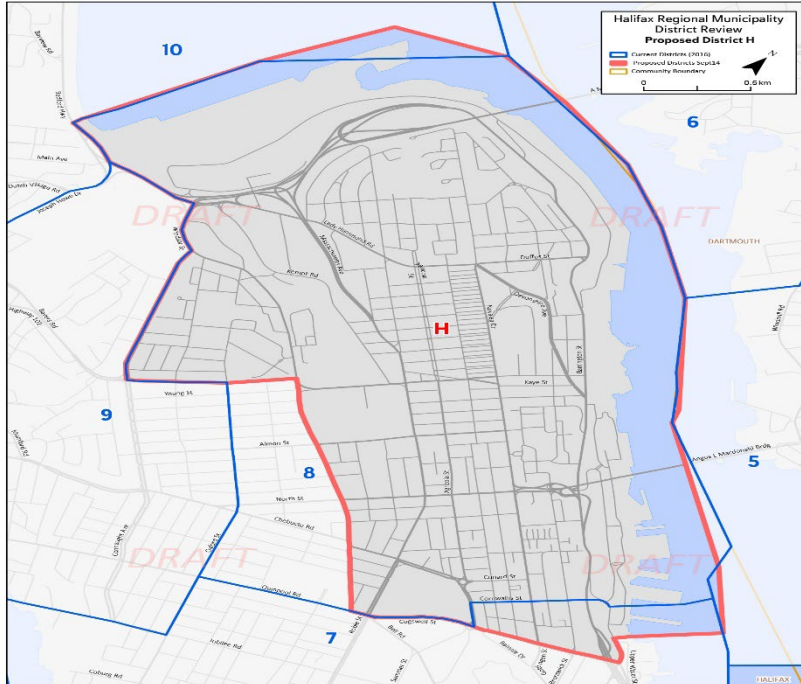
Proposed District G



Proposed District G

- Proposed District G encompasses most of existing District 7 in Downtown Halifax and the South End of Halifax Peninsula with some minor adjustments along Jubilee Road and Cogswell Street
- The estimated elector count falls within the +/- 10 percent variance at 23,716 allowing room for future growth which is anticipated
- Proposed District G considers established communities of interest following existing community, planning and school boundaries

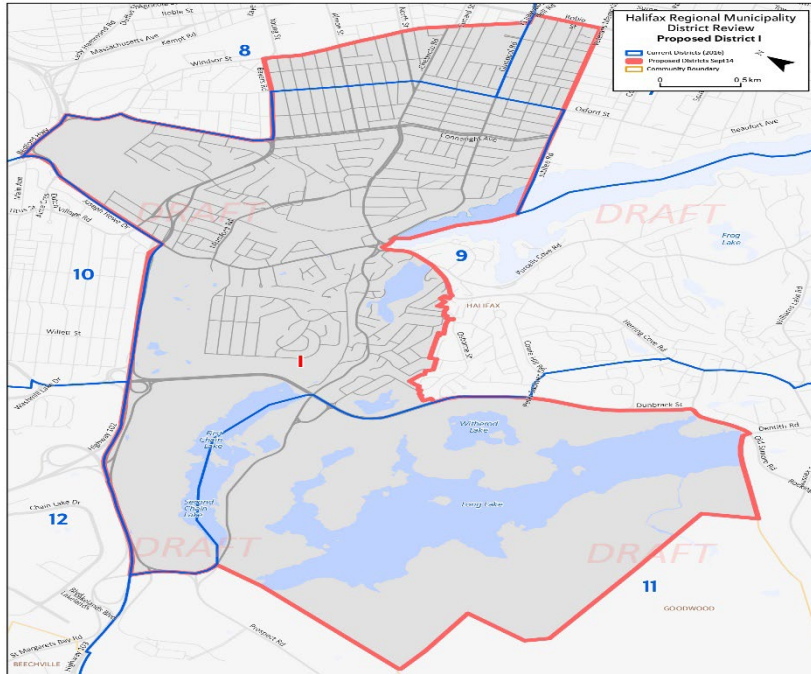
Proposed District H



Proposed District H

- Proposed District H encompasses most of existing District 8 and a portion of current District 7 – specifically the southern boundary has been moved south to Cogswell Street. The Western boundary has been moved to Windsor Street up to Bayers Road, where it continues west to Connaught Street northwards
- The estimated elector count falls within the +/- 10% variance at 21,655 electors and allows for future growth which is anticipated
- Proposed boundaries consider established communities of interest by following existing community, school, and planning boundaries

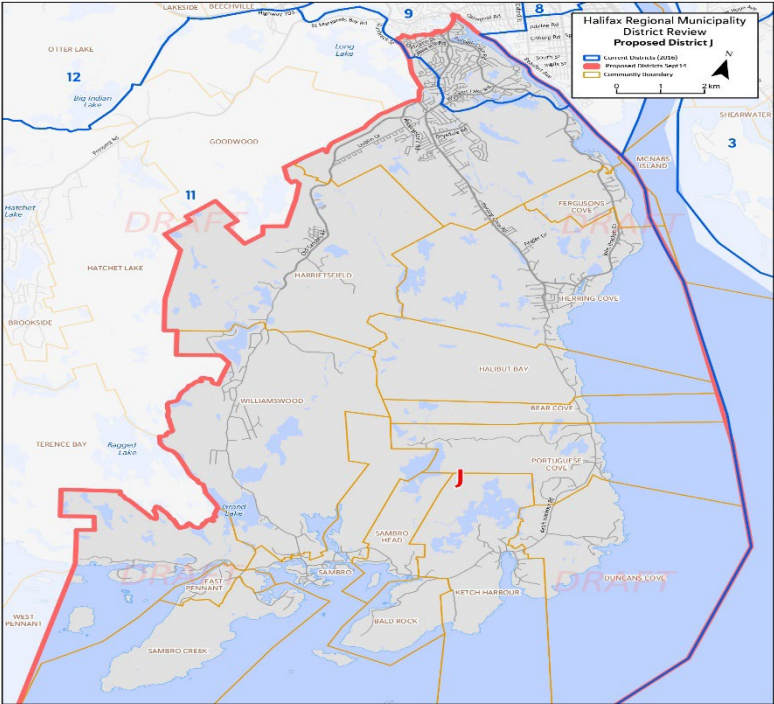
Proposed District I



Proposed District I

- Proposed District I includes portions of existing Districts 7, 8, 9, and 11
- The estimated elector count falls within the +/- ten percent variance range at 22,356 and allows for future growth which is anticipated
- Proposed District I considers established communities of interest by following community boundaries and grouping together generally urban and downtown communities

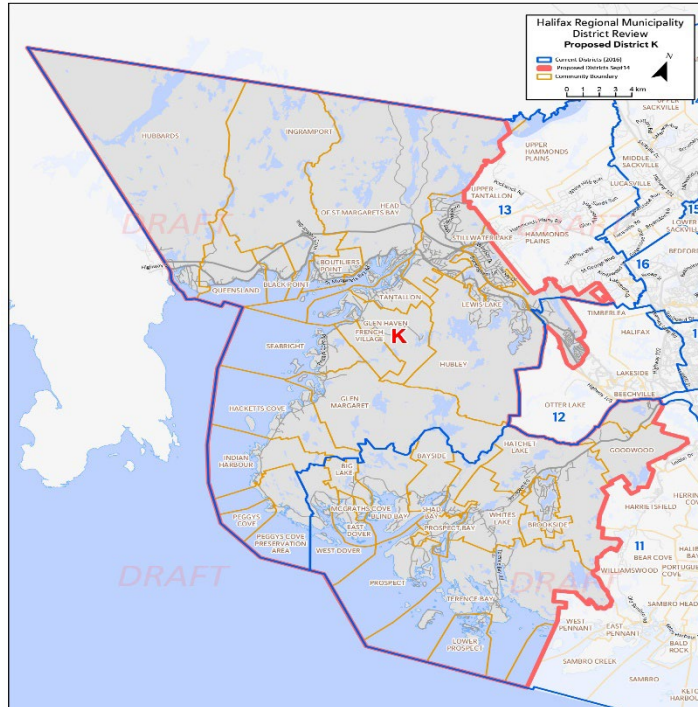
Proposed District J



Proposed District J

- Proposed District J encompasses portions of existing Districts 9 and 11 including the communities of Fergusons Cove, Herring Cove, Halibut Bay, Bear Cove, Portuguese Cove, Duncans Cove, Ketch Harbour, Bald Rock, Sambro, Sambro Head, Sambro Creek, East Pennant, West Pennant, Williamswood, Harrietsfield, and Halifax (Spryfield and Cowie Hill)
- The estimated elector count falls within the +/- 10% variance at 24,989 electors allowing some room for future growth which is not projected to increase substantially
- Population density – there is a dense population within the more urban area mixed with a disbursed suburban/rural community
- Considers established communities of interest by following community, school and planning boundaries

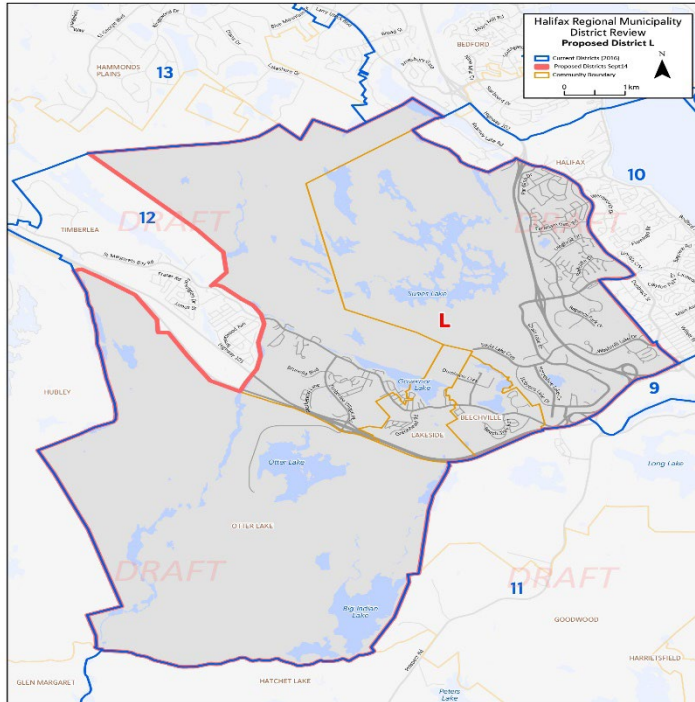
Proposed District K



Proposed District K

- Proposed District K encompasses existing portions of Districts 11, 12, and 13 including the communities of Prospect, Peggy's Cove, Queensland, Hubbards, Tantallon, and a portion of Timberlea, among others
- The estimated elector count falls within the +/- 10% variance at 24,598; there is not significant growth projected for this district
- Considers established communities of interest by keeping rural and suburban coastal communities together

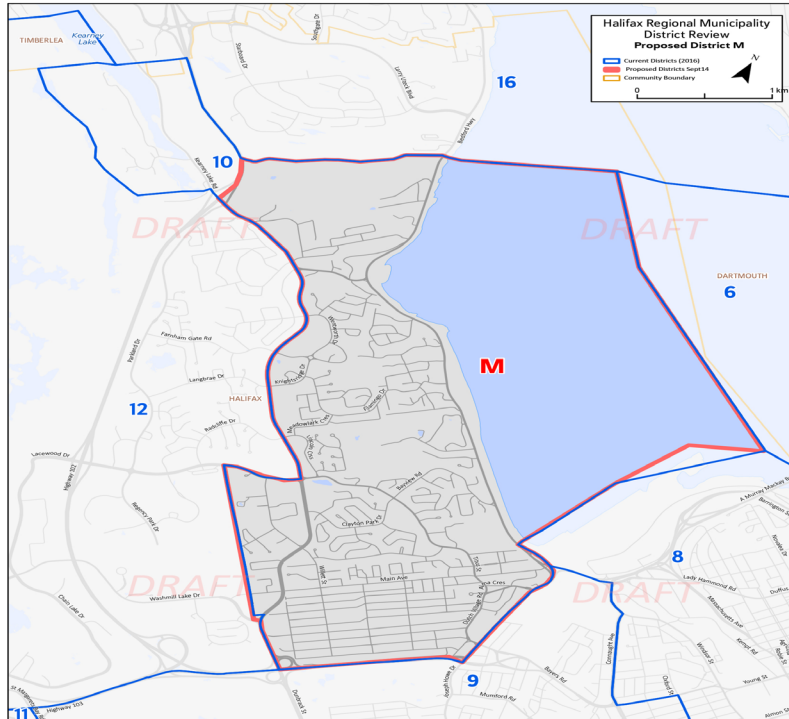
Proposed District L



Proposed District L

- Proposed District L encompasses most of the current District 12 with the exception of a portion of the community of Timberlea west of Nine Mile River. The proposed district includes the communities of Lakeside, Beechville, Otter Lake, and a portion of Halifax West
- The estimated elector count falls within the +/- 10% variance at 21,484 electors and allows for future growth which is anticipated
- Considers established communities of interest by following existing community, school and planning boundaries

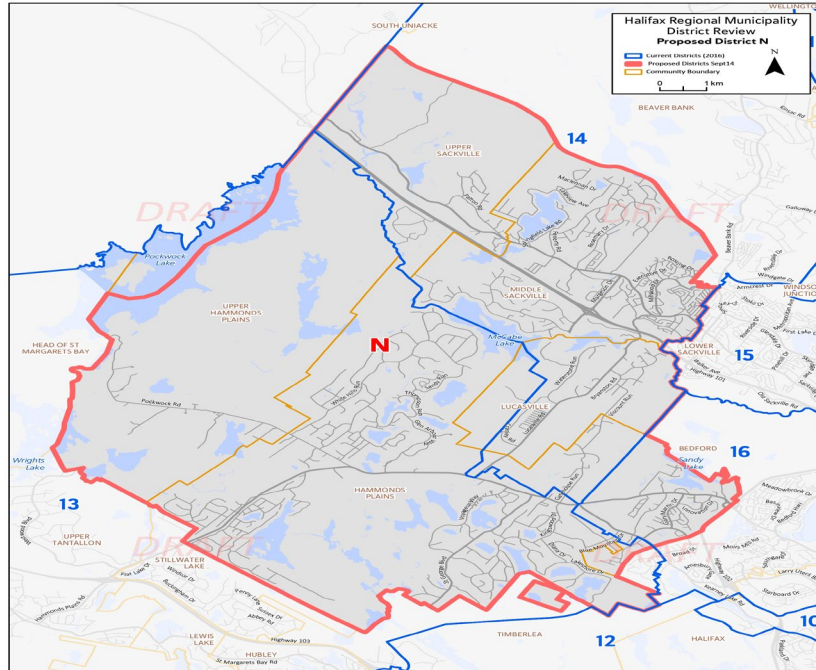
Proposed District M



Proposed District M

- Proposed District M encompasses the majority of current District 10 excluding the areas around Kearney Lake to the west of Highway 102. The southern border of the district now sits on School Avenue
- The estimated elector count falls within the +/- 10 % variance at 22,806 electors. This allows for future growth which is anticipated
- Considers established communities of interest by following existing community, school, and planning boundaries and keeping suburban communities with common interests together

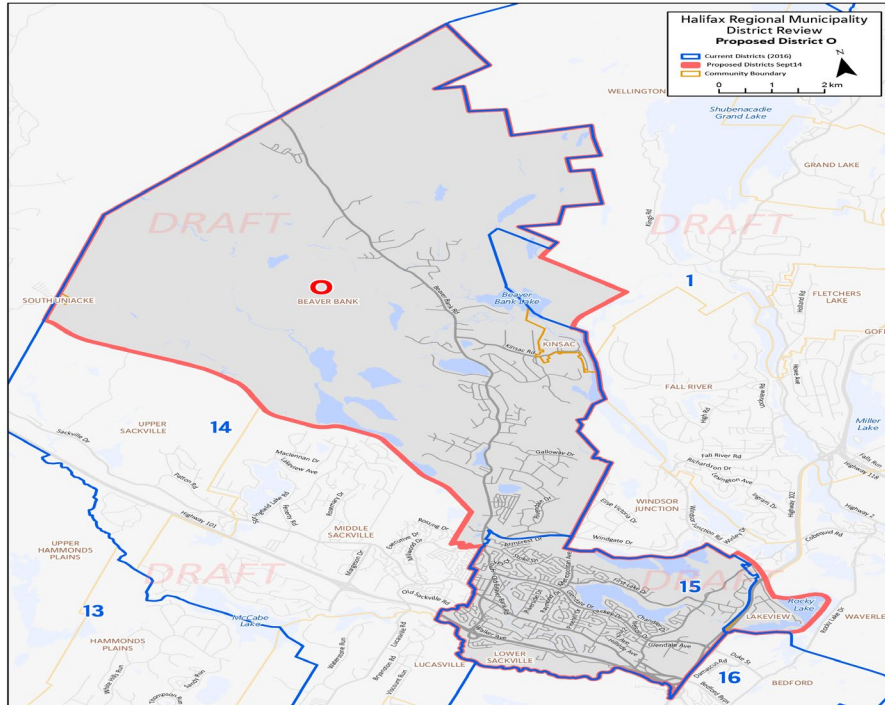
Proposed District N



Proposed District N

- Proposed District N includes portions of current District 13, 14, and 16 and includes the communities of Upper Sackville, Middle Sackville, Lucasville, Upper Hammonds Plains and Hammonds Plains, and a portion of Bedford West
- The proposed boundary now encompasses all of Lucasville
- The estimated number of electors falls within the +/- 10 % variance at 25,597 electors and allows some room for future growth
- Considers communities of interest by linking the historic African Nova Scotian communities of Lucasville and Upper Hammonds Plains together

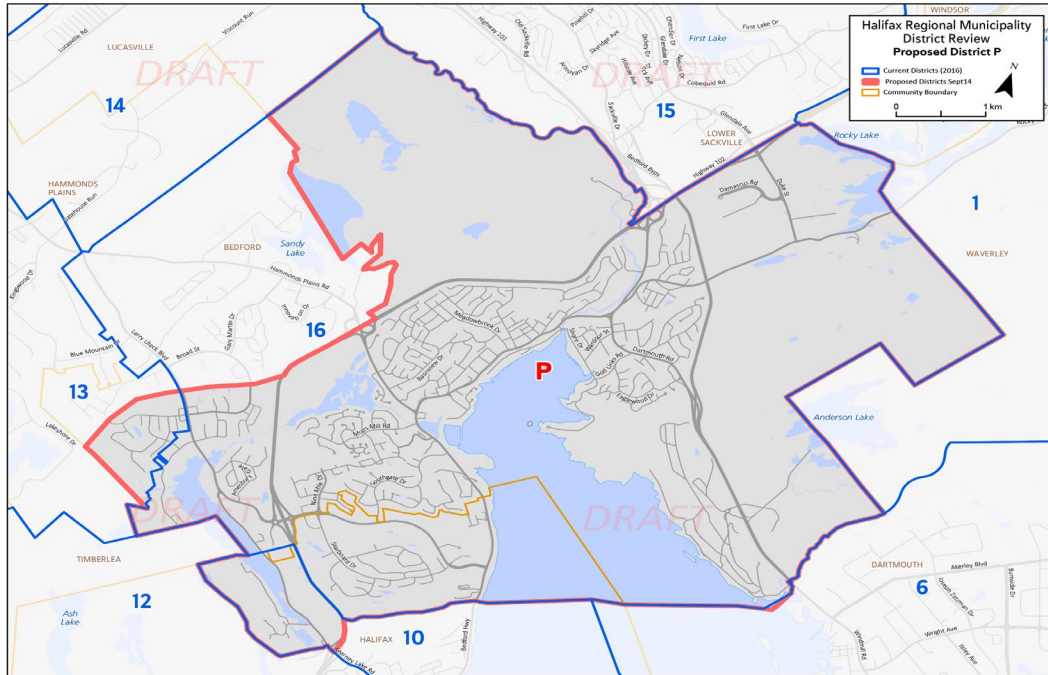
Proposed District O



Proposed District O

- Proposed District O encompasses portions of existing Districts 1, 13, and 14, including the communities of Beaver Bank, Kinsac, Lower Sackville, and Lakeview
- The proposed elector count falls within the +/- 10% variance at 25,324 which allows some room for future growth
- Considers communities of interest by following existing community, school and planning boundaries and keeping suburban communities together

Proposed District P



Proposed District P

- Proposed District P encompasses portions of existing Districts 10, 13, and the majority of District 16. It includes the community of Bedford and a portion of Halifax
- The estimated elector count falls within the +/- 10% variance range at 25,279 and allows some room for future growth
- Considers communities of interest by following existing community, school and planning boundaries

Number of Electors and Voter Parity – Proposed District

Proposed District	Estimated number of electors (2021)	+/- 10 percent variance for voter parity
A	26,685	+14.7%
B	24,144	+3.8%
C	21,407	-8%
D	19,843	-14.7%
E	20,366	-12.5%
F	22,503	-3.3%
G	23,716	+1.9%

Average Number of Electors	High Range +10%	Low Range -10%
23,263	25,589	20,936

Number of Electors and Voter Parity – Proposed District

Proposed District	Estimated Number of Electors (2021)	Voter Parity variance +/- 10 %
H	21,655	-6.9%
I	22,356	-3.9%
J	24,989	+7.4%
K	24,598	+5.7%
L	21,484	-7.6%
M	22,806	-2%
N	24,597	+5.7%
O	25,324	+8.9%
P	25,729	+9.7%

Average Number of Electors	High Range +10%	Low Range -10%
23,263	25,589	20,936

Population Summary

- On average HRM's Councillors represent 27,604 residents and 23,602 electors per district
- By 2024 the number of electors are projected to grow to 388,861 or 24,291 per district (average)



Feedback

- Given what you've heard this evening, how do you feel about the newly proposed Districts?
- To what extent do you agree or disagree with the placement of the new boundaries?
- Keeping in mind the five criteria listed in section 368 (4) of the MGA, what changes should be considered to the proposed boundaries to make them more effective?

How can I continue to engage?

- Public Engagement Survey – Narrative Research – October 11 – October 25, 2022
- Public Information Meetings – October 11 – October 24, 2022
- Corresponding with the District Boundary Resident Review Panel
- Public Participation at District Boundary Resident Review– October, November 2022
- Public Participation at Executive Standing Committee – October/November 2022

Thank you



50

HALIFAX