

BEARINGS SHOWN HEREON ARE BASED ON THE NOVA SCOTIA CO-ORDINATE SYSTEM, ZONE 5, CENTRAL MERIDIAN LONGITUDE 64°30' W AS ESTABLISHED FROM GPS OBSERVATION OF N.S.C.M. No. 6010, CHECKED TO N.S.C.M. No. 4915

LEGEND

Δ N.S.C.M.	NOVA SCOTIA COORDINATE MONUMENT
○ O.I.B.	SURVEY MARKER, IRON BAR
● O.I.T. @ CC	ROCK POST, IRON TUBE, CUT CROSS
○ U.P. X.G.U.Y.	UTILITY POLE, GUYWIRE
○ O.H.W.M.	ORDINARY HIGH WATER MARK
P.C., A, R	POINT OF CURVATURE, ARC, RADIUS
F.D., WIT., (T), sq.ft.	FOUND, WITNESS, TOTAL SQUARE FEET
---	BOUNDARIES DEALT WITH HEREON
---	EASEMENT OR RIGHT OF WAY BOUNDARY
---	OVERHEAD WIRES
---	FENCE
D, P	DEED, PLAN (DISTANCE)
Φ	DIAMETER
□ L.S.	LIGHT STANDARD
⊕ F.H. O.M.H.	FIRE HYDRANT, MANHOLE
⊕ W.V. C.I.B.	WATERVALVE, CATCH BASIN
S.D.M.M.	SERVANT, DUNBRACK, MCKENZIE & McDONALD
H.R.M.	HALIFAX REGIONAL MUNICIPALITY
⊠	STONE WALL
⊠	CONCRETE

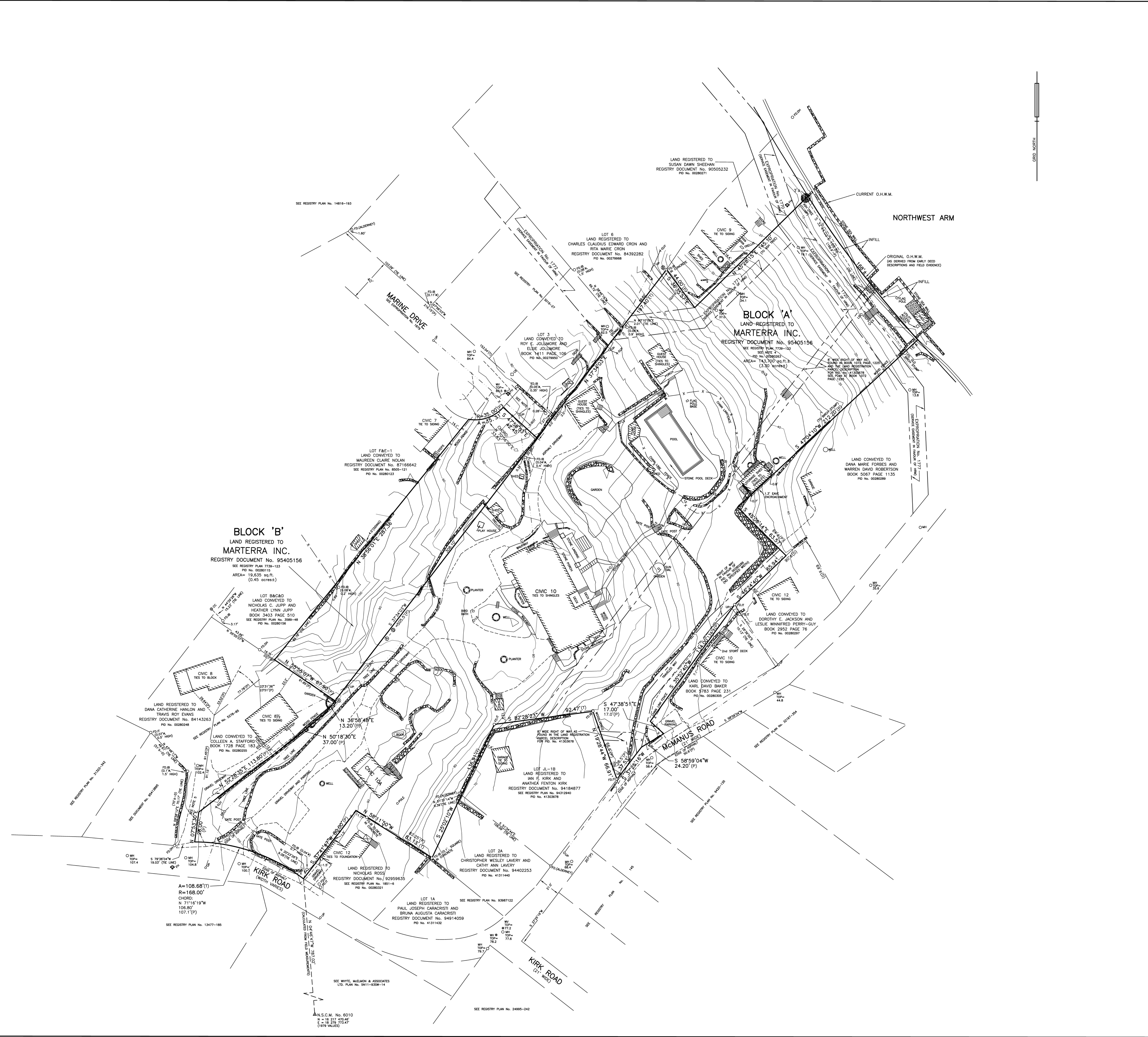
- NOTES**
- BEARINGS AND DISTANCES SHOWN WERE ADJUSTED BY LEAST SQUARES.
 - SCALE FACTOR NOT APPLIED.
 - FIELD SURVEYS WERE CARRIED OUT DURING THE PERIOD OF JANUARY 11, 2011 TO JANUARY 28, 2011.
 - FOR EARLY PLANS OF BLOCK 'A' SEE BOOK 583 PAGE 883 AND BOOK 878 PAGE 382.
 - RIGHT OF WAY SERVING CIVIC 8 & 8 1/2 KIRK ROAD IS SHOWN AS 20' ON REGISTRY PLAN No. 5278-89 BUT MEASURES 15' ±.
 - RIGHT OF WAY 25' WIDE IN FAVOUR OF LANDS TO THE NORTH WEST OF BLOCK 'A' AND HRM SERVICE EASEMENT SEE EXPROPRIATION No. 1725, LAND NOW OR FORMERLY CONVEYED TO JOHN T. CRURCHANK.

SURVEYOR'S CERTIFICATE

I, DAVID J. WHYTE, NOVA SCOTIA LAND SURVEYOR HEREBY CERTIFY THAT THE SURVEY REPRESENTED BY THIS PLAN WAS CONDUCTED UNDER MY SUPERVISION AND THAT THE SURVEY AND PLAN WERE MADE IN ACCORDANCE WITH THE NOVA SCOTIA LAND SURVEYORS ACT AND THE REGULATIONS MADE THEREUNDER.

DATED THIS 8th DAY OF FEBRUARY 2011

..... NLS



PLAN OF SURVEY OF

BLOCK 'A' AND BLOCK 'B'

LAND REGISTERED TO

MARTERRA INC.

KIRK ROAD
HALIFAX COUNTY

HALIFAX
NOVA SCOTIA

WHYTE, McELMON & ASSOCIATES LTD.
NOVA SCOTIA LAND SURVEYORS
DEVELOPMENT CONSULTANTS

HALIFAX
NOVA SCOTIA

SCALE : 1"=30'
FILE No. : 3781
PLAN DATE : FEBRUARY 8, 2011
DRAWN BY : MR. GA
PLAN No. : **5N11-93NW-13**

FOUNDED 1861
DAVID J. WHYTE
523
NEWBRIDGE

3781.3781.DWG