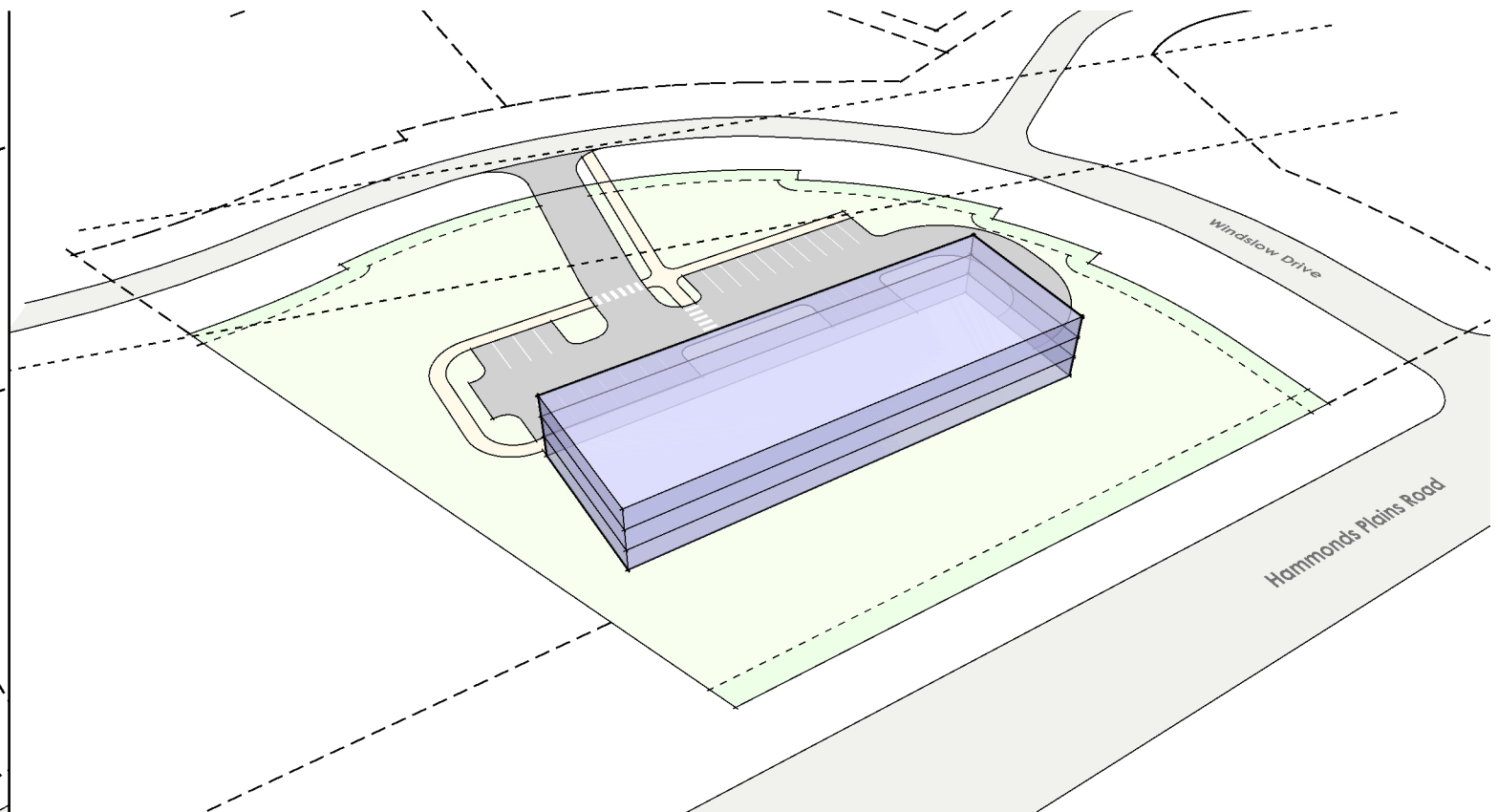
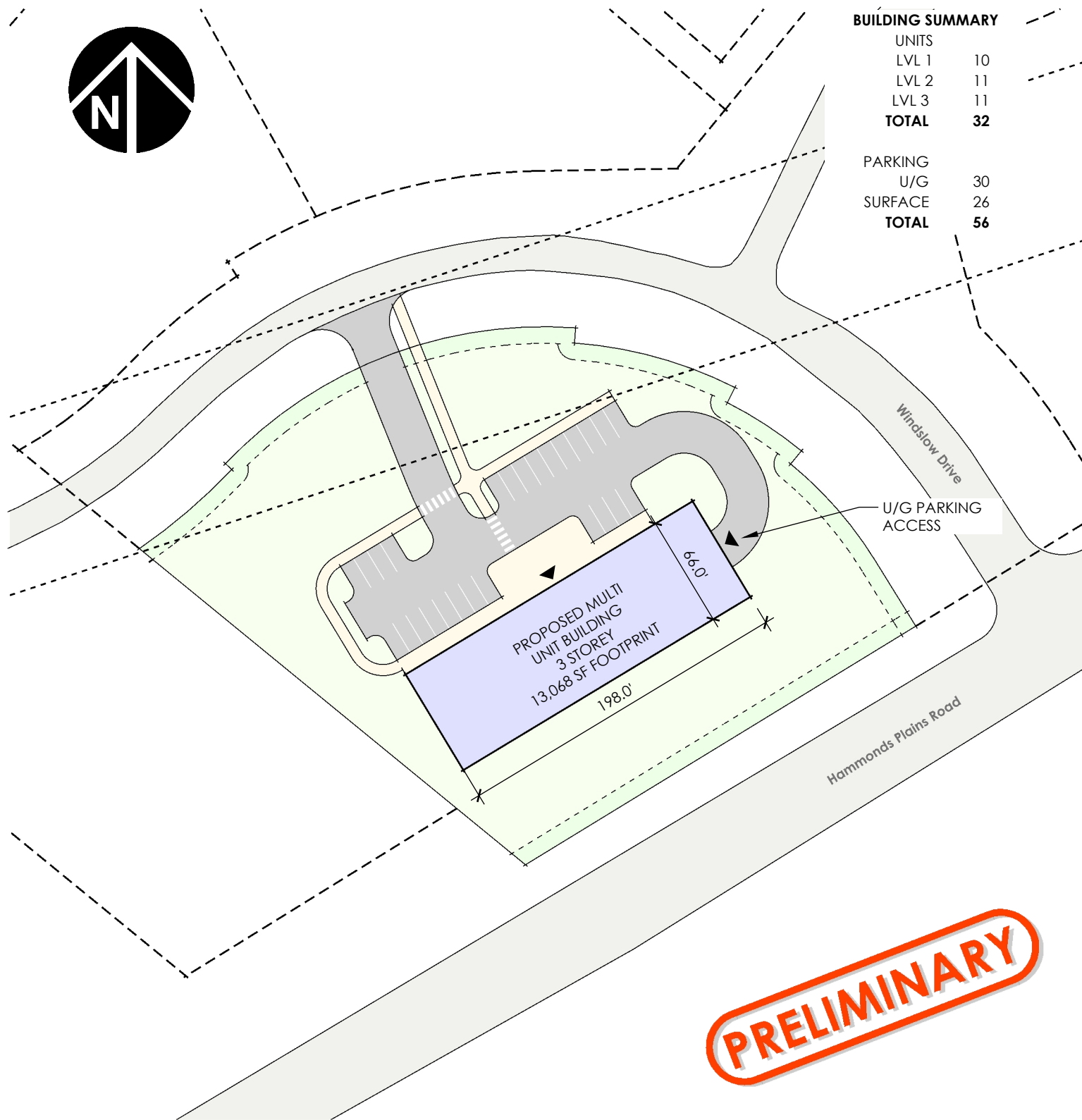




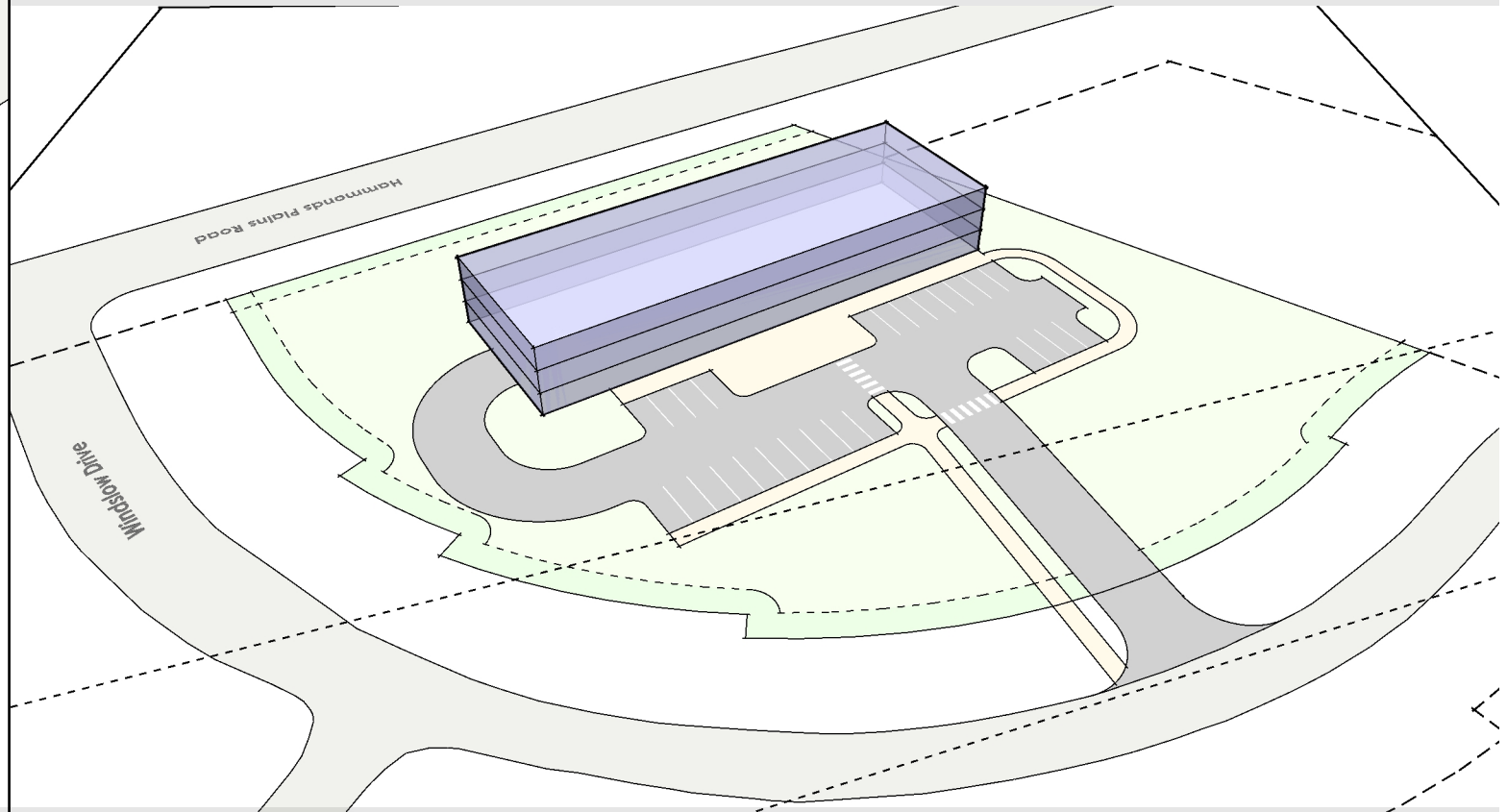
BUILDING SUMMARY

UNITS	
LVL 1	10
LVL 2	11
LVL 3	11
TOTAL	32

PARKING	
U/G	30
SURFACE	26
TOTAL	56



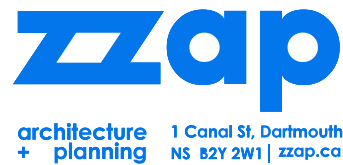
Perspective View (southern)



Perspective View (northern)

Plan View scale 1"=60'

C:/Users/Ken/Zwickler/Zwickler Architecture & Planning/Projects - Documents/2019/19-056 Ramar - Upper Tantallon/PLAN/DWG/3_3D Planning Envelope/19-056-MASSING-104



CLIENT
**RAMAR
CONSTRUCTION
LTD.**

PROJECT
WINSLOW DRIVE AND HAMMONDS PLAINS ROAD
Upper Tantallon, Nova Scotia

DRAWING
**PRELIMINARY BUILDING
ENVELOPE ANALYSIS**

PROJECT NO. **19-056**
DRAWN BY: KJW
DATE: JUNE 29, 2022

DRAWING NUMBER
104