

Item 9.1.1

**HALIFAX**

# **H00512 - 2287 Brunswick Street**

Request to Include Property in the Registry of Heritage  
Property for the Halifax Regional Municipality

Heritage Advisory Committee  
June 22, 2022

# Location



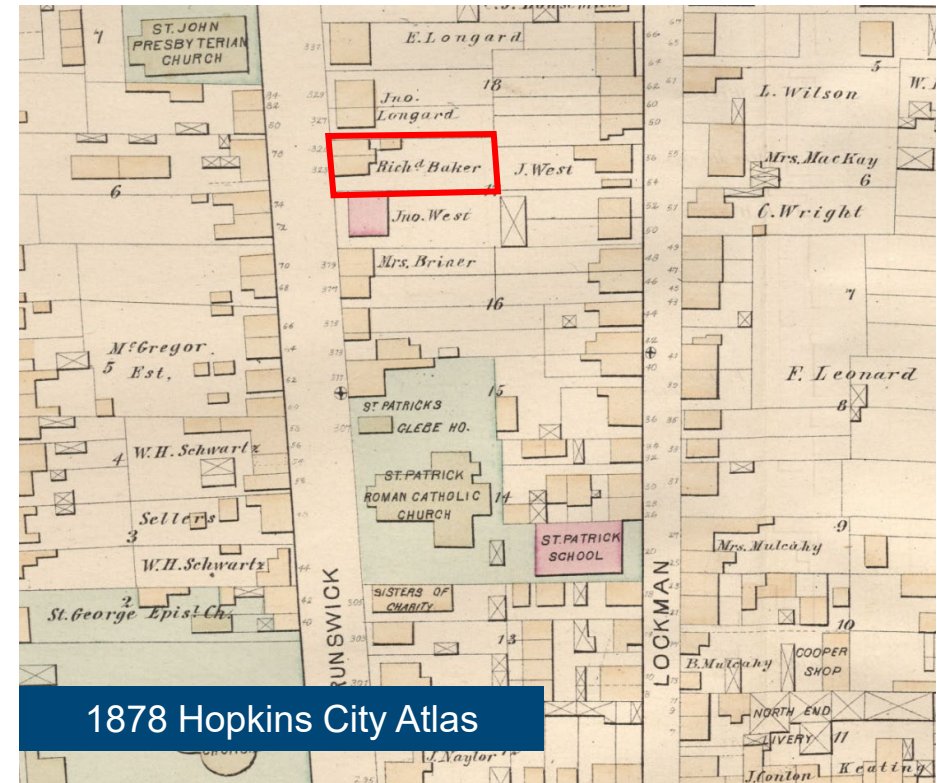


# Location



**HALIFAX**

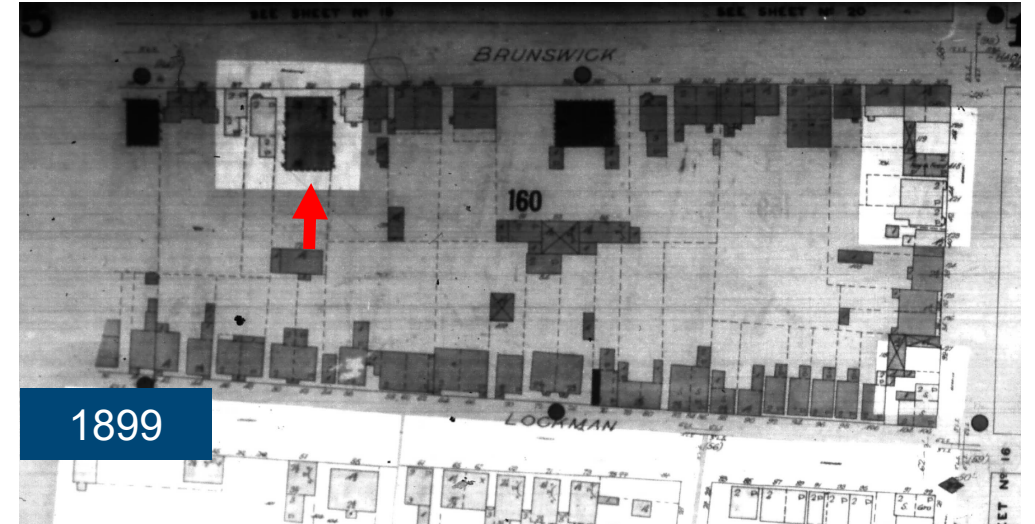
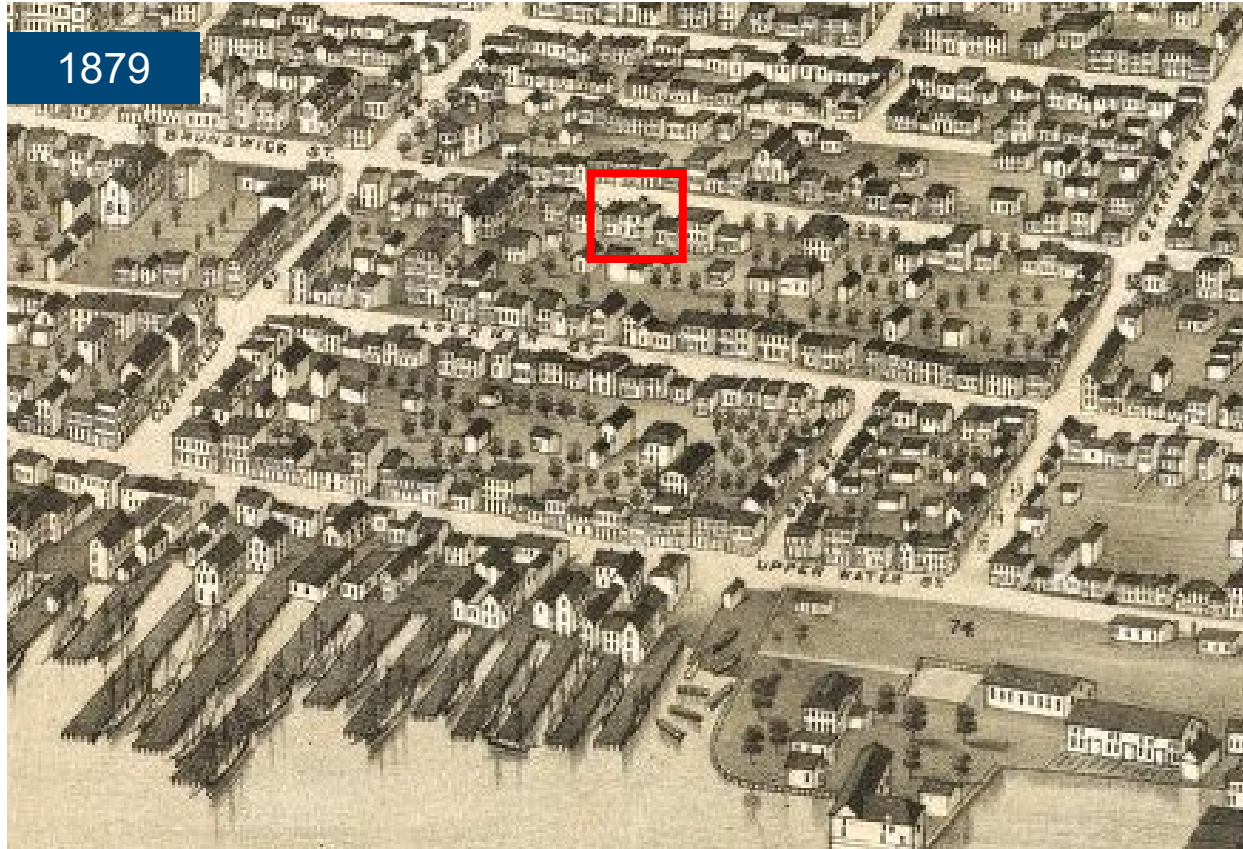
# 1. Age



HALIFAX



# 1. Age



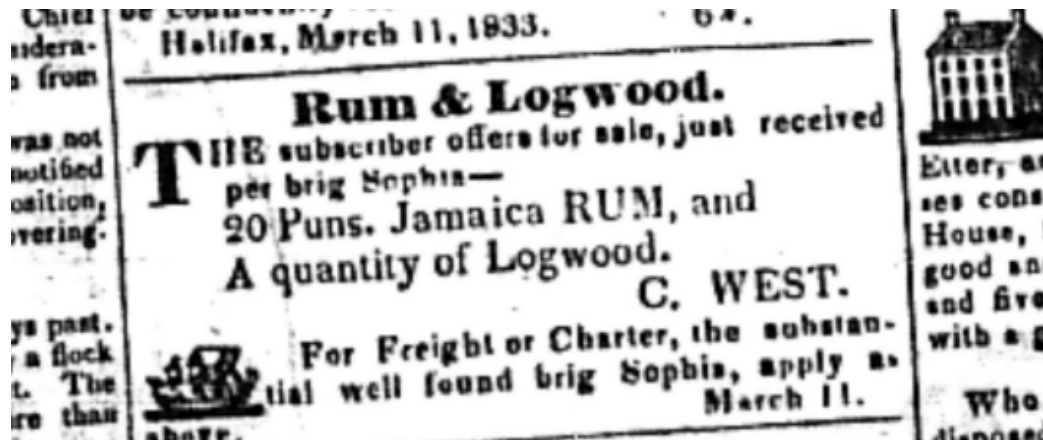
**HALIFAX**

# 1. Age

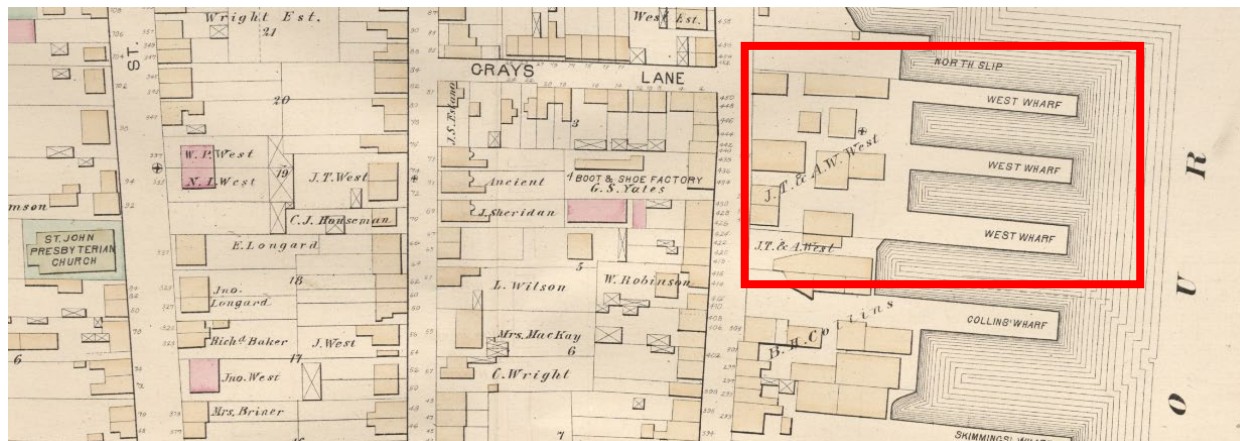
---

Date of Construction	Points	Timeline
1749 - 1785	25	Halifax Garrison Town to the Loyalist migration
1786 - 1830	20	Boom period following construction of Shubenacadie Canal
1831 - 1867	16	From Boom to Confederation
1868 - 1899	13	Confederation to the end of the 19 <sup>th</sup> century
1900 - 1917	9	Turn of the Century to Halifax Harbour Explosion
1918 - 1945	5	The War Years
1945 - Present	3	Post-War

# 2a. Historical Importance *(Historical Relationships)*

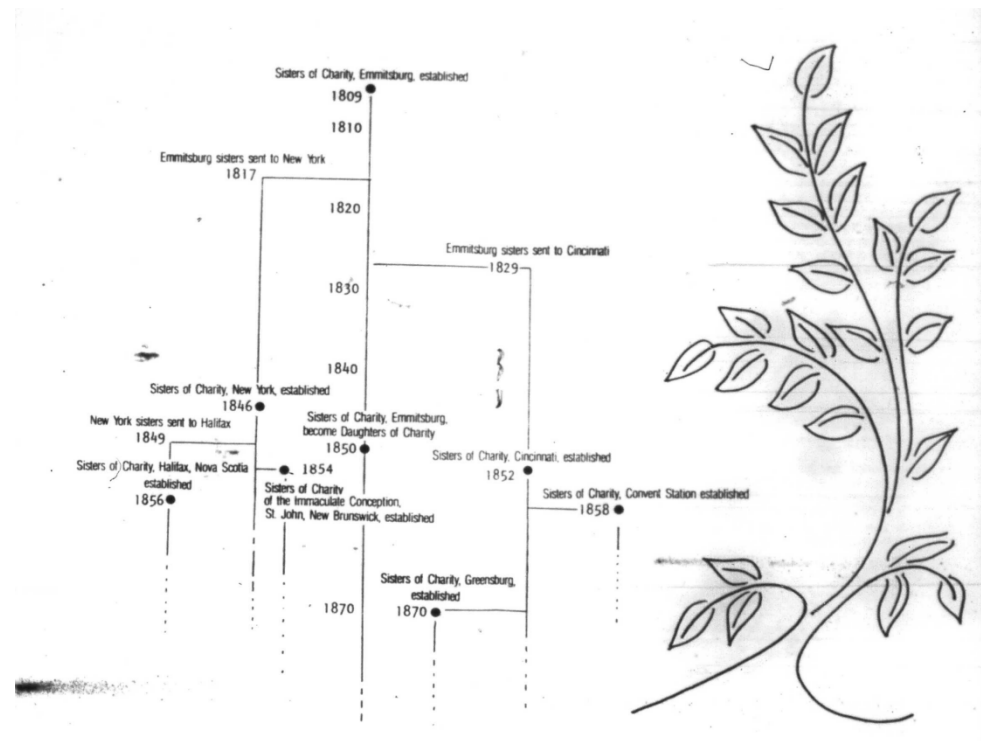


- Built for John Conrad West in 1862
- Merchant; one of the sons of John Conrade West (Sr.) who founded the C. West West Indies merchantry business
- John Conrade West (Sr.) was a merchant and later a municipal politician



**HALIFAX**

## 2a. Historical Importance *(Historical Relationships)*



- Purchased by the Sisters of Charity in 1888
- Property became new St. Patrick's Convent, led by the Sisters
- Sisters of Charity of Saint Vincent de Paul (as they were later known) eventually staffed the Shubenacadie Indian School from 1930-1967

**HALIFAX**



## 2b. Historical Importance *(Architectural Style)*



- Highly representative of residential Italianate architecture
- Defined by characteristics such as symmetrical front fascia, paired round-headed windows, among others.
- Unique due to rare brick and stucco use, where most residential Italianate architecture in Halifax is wood construction

**HALIFAX**

## 2b. Historical Importance *(Architectural Style)*

---

Importance	Points
Highly important, Unique, or representative of an era	16 - 20
Moderately important, Unique, or representative of an era	11 - 15
Somewhat important, or representative of an era	10 - 1
Not important, Unique, or representative of an era	0

**HALIFAX**

# 3. Significance of Architect/Builder

---

- Historical research did not identify specific architect or builder for 2287 Brunswick Street

Status	Points
Nationally	7 - 10
Provincially Significant	4 - 6
Locally Significant	1 - 3
Not Significant	0



## 4a. Architectural Merit (*Construction Type*)

- Brick construction with façade covered in stucco
- Granite and fieldstone foundation
- Ornate mouldings and brackets



**HALIFAX**

# 4a. Architectural Merit (*Construction Type*)

- Brick construction with façade covered in stucco
- Granite and fieldstone foundation
- Ornate mouldings and brackets

A) Construction type	Points
Very rare/ early example	7 - 10
Moderately rare/ early	4 - 6
Somewhat rare/ early example	1 - 3
Not rare/ common example	0

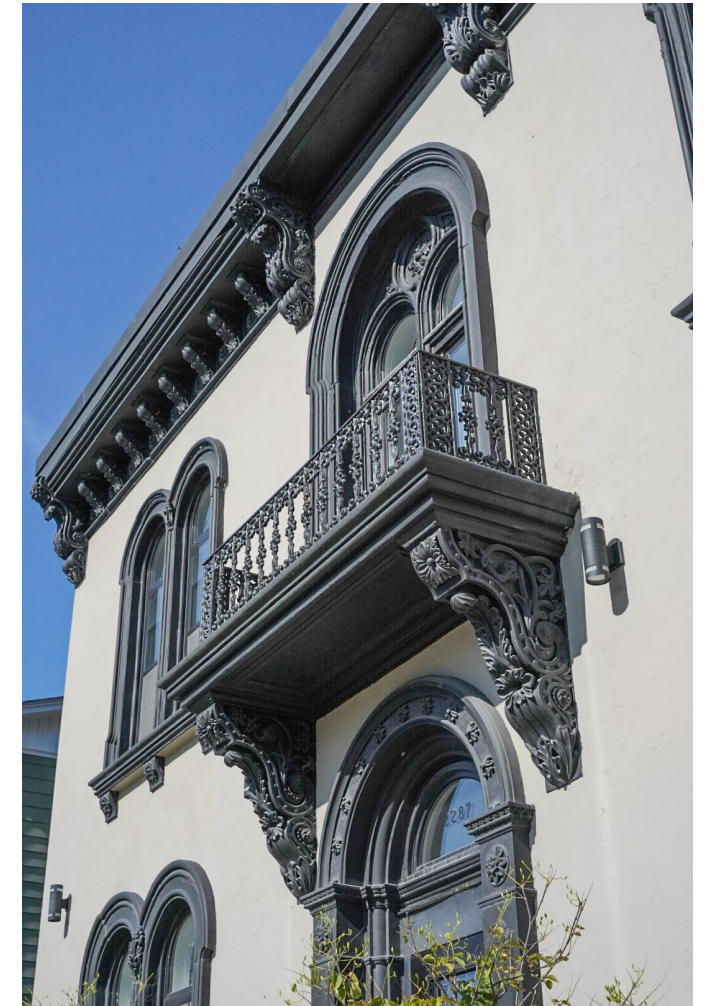


HALIFAX



## 4b. Architectural Merit (Style)

- Italianate style, popular between 1860-1890
- Key features and character defining elements include:
  - Original Italianate-style building with a symmetrical appearance;
  - Brick exterior walls with a stucco-clad façade;
  - Granite and fieldstone foundation;
  - Prominent cornice and split frieze featuring foliated corbels, modillions, and medallions;
  - Paired three-pane, round-headed windows on the façade featuring:
    - Decorative mouldings that narrow at the sides;
    - Panel and pilaster bases on the ground storey;
    - Bracketed sills on the second storey; and
    - Recessed windows with a large arch mould and floral medallion above the entryway;
  - Cast-iron balcony on the second storey, which is supported by ornamental corbels;
  - Recessed front entrance with a door surround, featuring pilasters, half-round transom, archivolt, and rosettes;
  - Vibrant floral, leaf, and grape detailing throughout the various façade elements;
  - Segmental arch and four-centre arched windows on the side and rear walls; and
  - A blinded oriel window.





# 4b. Architectural Merit (Style)



B) Style	Points
Very rare/ early example	7 - 10
Moderately rare/ early	4 - 6
Somewhat rare/ early example	1 - 3
Not rare/ common example	0

**HALIFAX**

# 5. Architectural Integrity



**HALIFAX**

# 5. Architectural Integrity



Exterior	Points
Largely unchanged	11 - 15
Modest changes	6 - 10
Major changes	1 - 5
Seriously compromised	0

HALIFAX



# 6. Relationship To Surrounding Area

2326 Brunswick St – St Patrick’s Boys School



2146 Brunswick Street



2267 Brunswick Street – St. Patrick’s Glebe

Points	Comments
6 - 10	The building is an important architectural asset contributing to the heritage character of the surrounding area.
1 - 5	The Architecture is compatible with the surrounding area and maintains its heritage character.
0	Does not contribute to the character of the surrounding area.

# Recommendation

---

It is recommended that the Heritage Advisory Committee recommend that Regional Council:

1. Set a date for a heritage hearing to consider the inclusion of 2287 Brunswick Street, as shown on Map 1, in the Registry of Heritage Property for the Halifax Regional Municipality; and
2. Approve the request to include 2287 Brunswick Street, as shown on Map 1, in the Registry of Heritage Property for the Halifax Regional Municipality as a municipal heritage property.

**HALIFAX**

**Thank You**