

Woodside-Shearwater Active Transportation Functional Plan ATAC



Project Background

Objectives

Summary of Study Area

Project Challenges

Routing & Concept Design Options

Evaluation Criteria

Next Steps

Q&A

Project Background



“Recommendation #31: The municipality should focus on making connections in the greenway network in general, and specifically tackling those connections into and through the regional centre. Halifax should also continue to improve connections between existing communities and nearby greenways.”



Study Area Candidate Bicycle Routes and Greenway Network

Project Background

Objectives

Summary of Study Area

Project Challenges

Routing & Concept Design Options

Evaluation Criteria

Next Steps

Q&A

Project Background



6 COLE HARBOUR PARKS & TRAILS ASSOCIATION



Project Background

Description of each project elements:

- 1 Determine the preferred 'AAA' options to fill the gap between Dartmouth Harbourfront Trail and Shearwater Flyer Trail.
- 2 Evaluate active transportation options for Pleasant Street between Acadia Street and Hines Road.



Project
Background

Objectives

Summary of
Study Area

Project
Challenges

Routing &
Concept
Design Options

Evaluation
Criteria

Next Steps

Q&A

Objectives of ATAC Session

Meeting with ATAC to:

- Provide project update
- Introduce the routing & concept design options
- Obtain feedback from the community on routing & concept design options
- Obtain feedback from the community on ideas and active transportation needs and preferences
- Review evaluation criteria
- Discuss project next steps



Project Background

Objectives

Summary of Study Area

Project Challenges

Routing & Concept Design Options

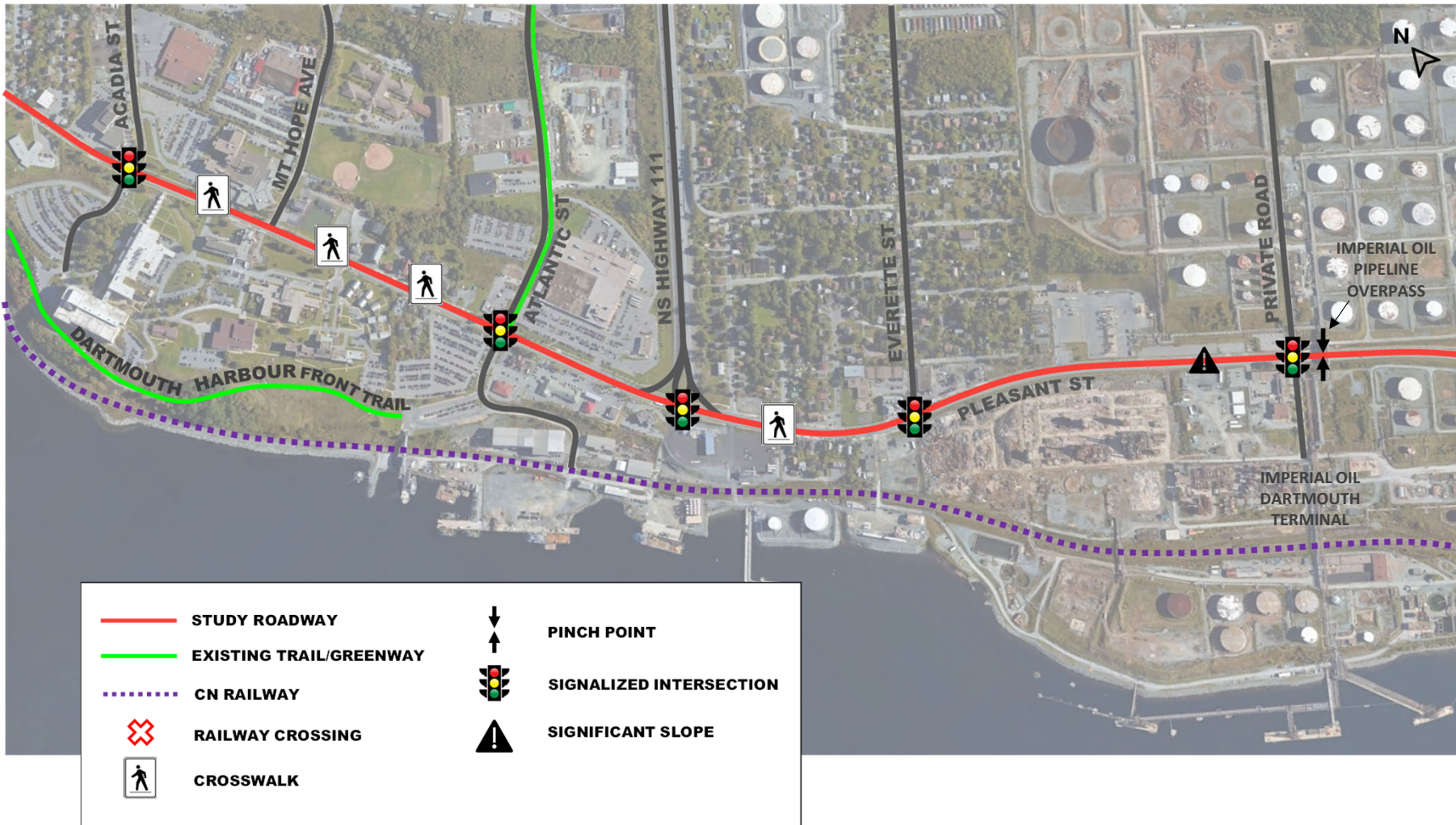
Evaluation Criteria

Next Steps

Q&A

Summary of Study Area

Pleasant St from Acadia St to Imperial Oil Dartmouth Terminal



Project Background

Objectives

Summary of Study Area

Project Challenges

Routing & Concept Design Options

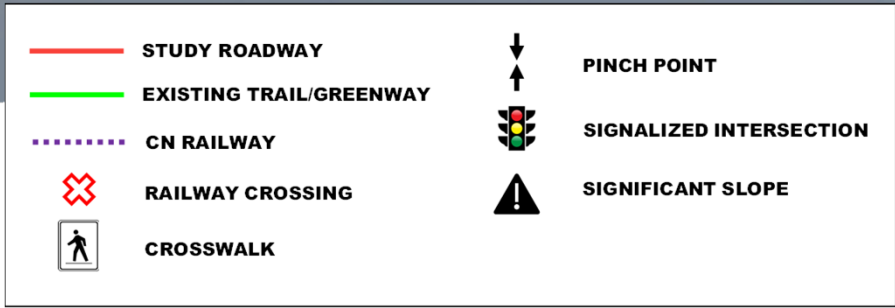
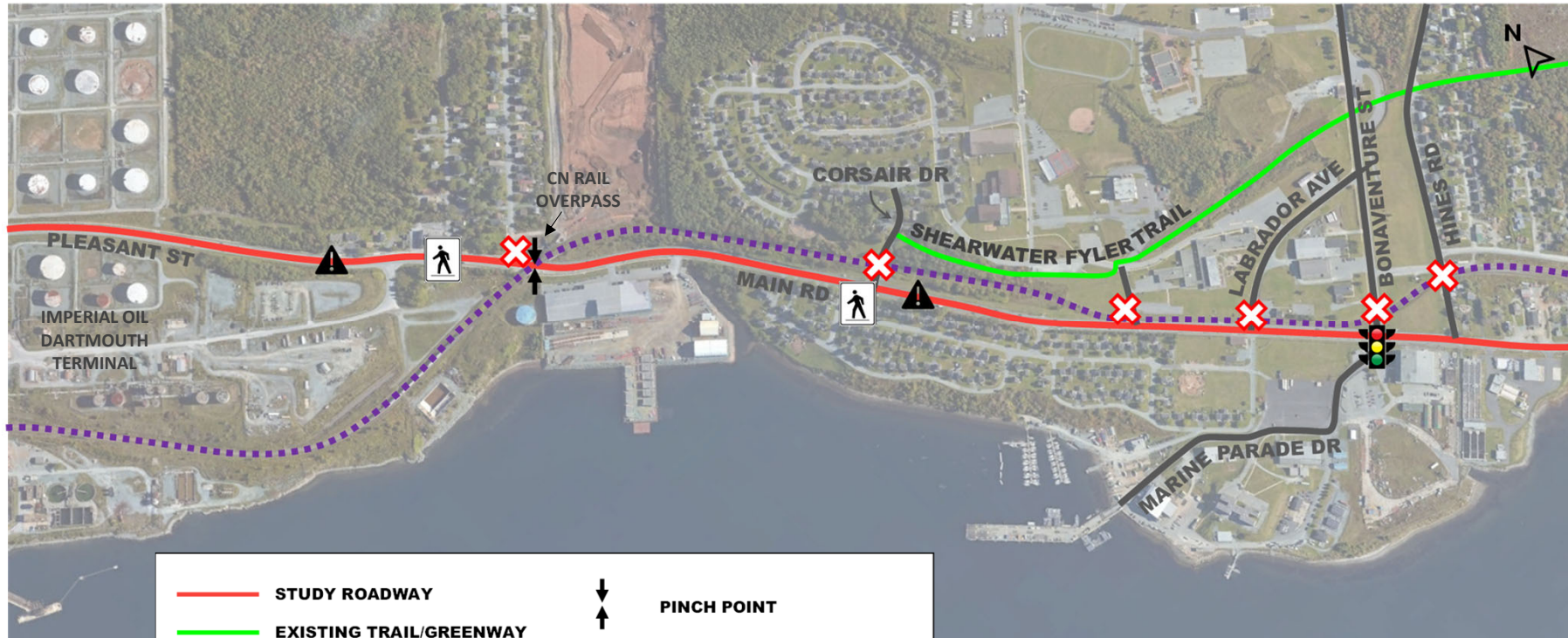
Evaluation Criteria

Next Steps

Q&A

Summary of Study Area

Pleasant St – Main Road from Imperial Oil Dartmouth Terminal to Hines Road



Project
Background

Objectives

Summary of
Study Area

**Project
Challenges**

Routing &
Concept
Design Options

Evaluation
Criteria

Next Steps

Q&A

Project Challenges

- Property Constraints
- Busy Intersections
- Pinch Points
- Railway within Study Area
- Industrial Traffic and Heavy Vehicles



Pleasant Street at NS Highway 111



CN Rail Line



*Pinch Point - CN Rail Crossing
Near Belmont Avenue*

Project Background

Objectives

Summary of Study Area

Project Challenges

Routing & Concept Design Options

Evaluation Criteria

Next Steps

Q&A

Routing & Concept Design Options

Project Study Area Segments



 **P** Pleasant Street Segment

W Woodside Ferry Terminal Segment

I Imperial Oil Segment

M Main Road Segment

Project Background

Objectives

Summary of Study Area

Project Challenges

Routing & Concept Design Options

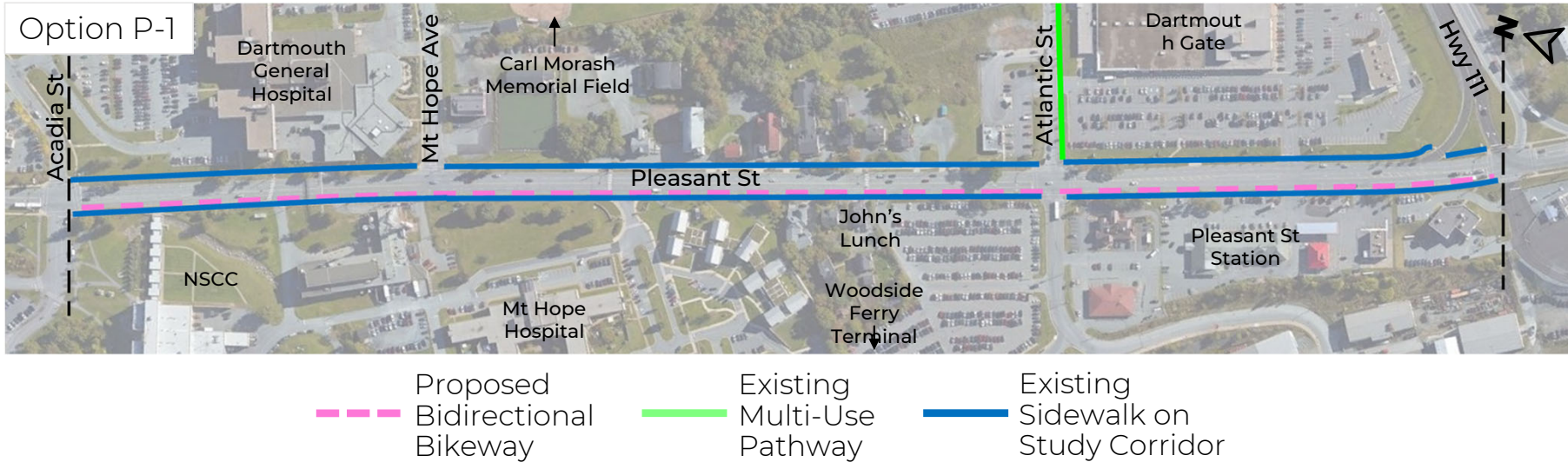
Evaluation Criteria

Next Steps

Q&A

Routing & Concept Design Options

P Pleasant St from Acadia St to Hwy 111



Option P-1

- Construct a bidirectional bikeway on the west side of Pleasant Street between Acadia Street and Hwy 111

Project Background

Objectives

Summary of Study Area

Project Challenges

Routing & Concept Design Options

Evaluation Criteria

Next Steps

Q&A

Routing & Concept Design Options

P Pleasant St from Acadia St to Hwy 111



Option P-1



Project Background

Objectives

Summary of Study Area

Project Challenges

Routing & Concept Design Options

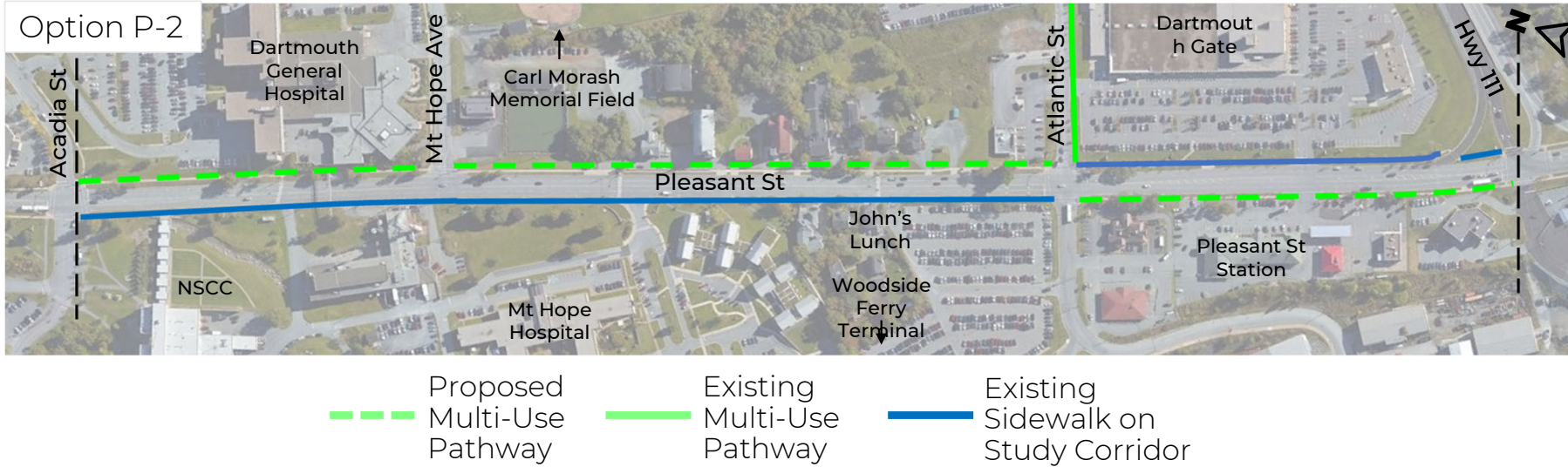
Evaluation Criteria

Next Steps

Q&A

Routing & Concept Design Options

P Pleasant St from Acadia St to Hwy 111



Option P-2

- Construct an asphalt multi-use pathway on the east side of Pleasant Street between Acadia Street and Atlantic Street
- Construct an asphalt multi-use pathway on the west side of Pleasant Street between Atlantic Street and Hwy 111

Project Background

Objectives

Summary of Study Area

Project Challenges

Routing & Concept Design Options

Evaluation Criteria

Next Steps

Q&A

Routing & Concept Design Options

P Pleasant St from Acadia St to Atlantic St



Option P-2



Project Background

Objectives

Summary of Study Area

Project Challenges

Routing & Concept Design Options

Evaluation Criteria

Next Steps

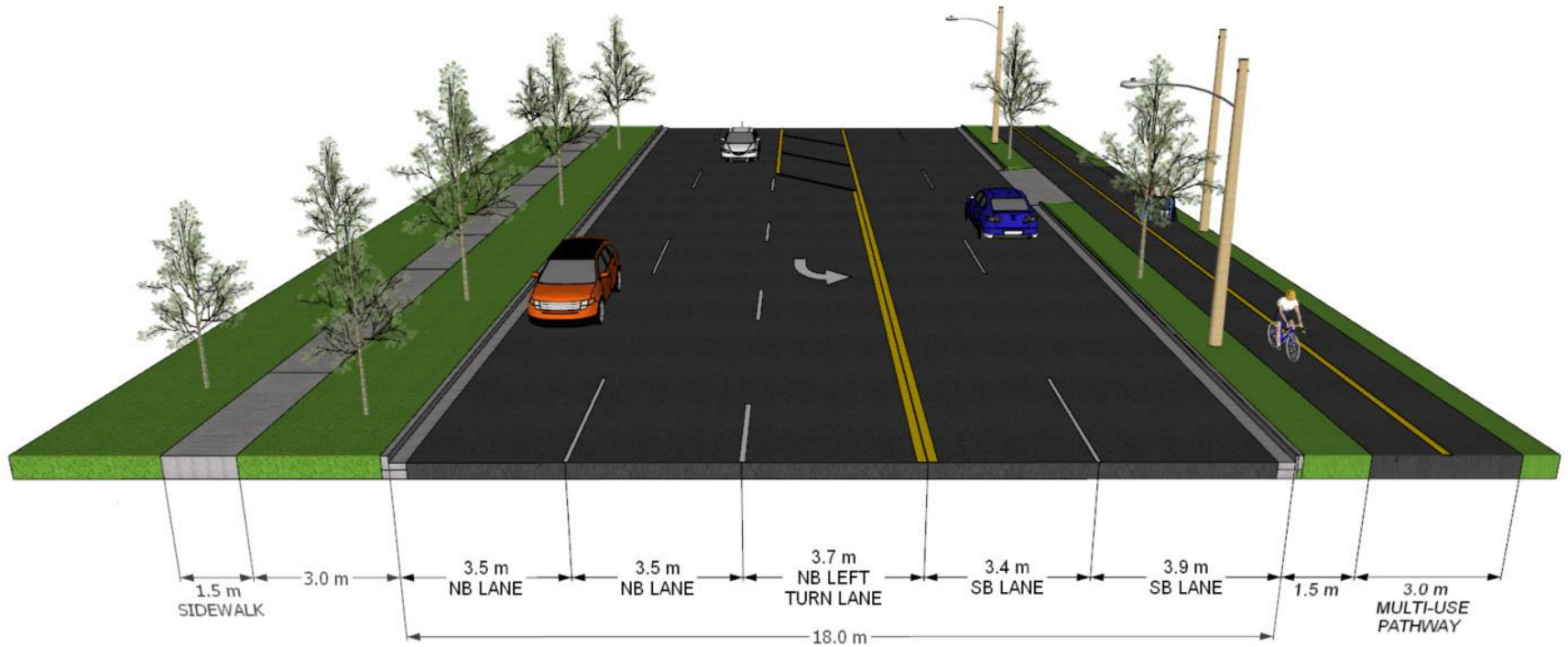
Q&A

Routing & Concept Design Options

P Pleasant St from Atlantic St to Hwy 111



Option P-2



Project Background

Objectives

Summary of Study Area

Project Challenges

Routing & Concept Design Options

Evaluation Criteria

Next Steps

Q&A

Routing & Concept Design Options

Project Study Area Segments



P Pleasant Street Segment

I Imperial Oil Segment

W Woodside Ferry Terminal Segment

M Main Road Segment

Project Background

Objectives

Summary of Study Area

Project Challenges

Routing & Concept Design Options

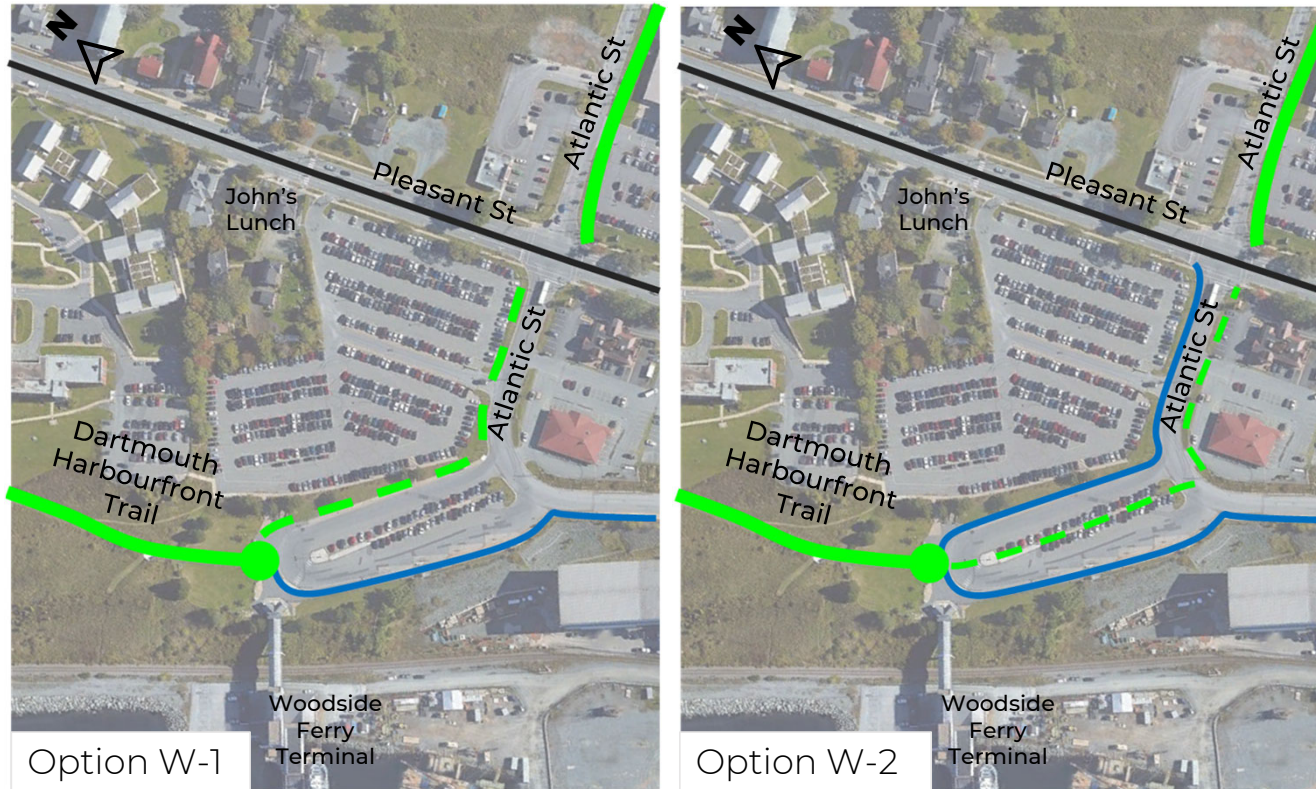
Evaluation Criteria

Next Steps

Q&A

Routing & Concept Design Options

W Connection from Dartmouth Harbourfront Trail to Pleasant St



Option W-1

Option W-2

- - - Proposed Multi-Use Pathway
- Existing Multi-Use Pathway
- Existing Sidewalk Along Segment W

Construct a multi-use pathway connection from the Dartmouth Harbourfront Trail to the existing multi-use pathway on Atlantic Street via:

Option W-1

The northern edge of the Woodside Ferry Terminal lower parking lot and the north side of Atlantic Street

Option W-2

The median of the Woodside Ferry Terminal lower parking lot and the south side of Atlantic Street

Project
Background

Objectives

Summary of
Study Area

Project
Challenges

Routing &
Concept
Design Options

Evaluation
Criteria

Next Steps

Q&A

Routing & Concept Design Options

Project Study Area Segments



P Pleasant Street Segment

W Woodside Ferry Terminal Segment

I Imperial Oil Segment

M Main Road Segment



Project Background

Objectives

Summary of Study Area

Project Challenges

Routing & Concept Design Options

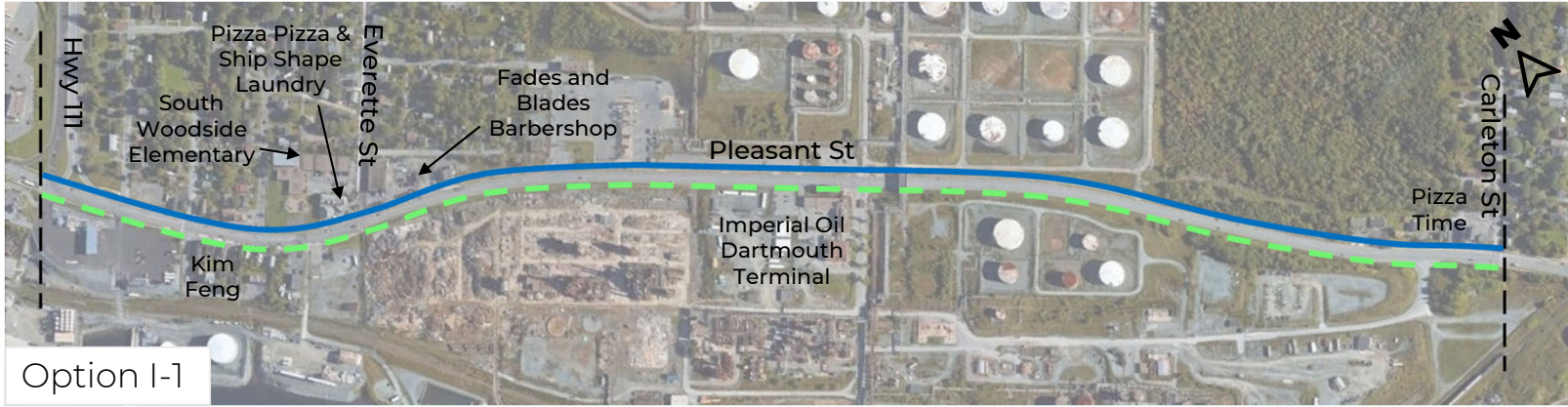
Evaluation Criteria

Next Steps

Q&A

Routing & Concept Design Options

I Pleasant St from Hwy 111 to Carleton St



Option I-1

--- Proposed Multi-Use Pathway
— Existing Sidewalk on Study Corridor

Option I-1

- Construct an asphalt multi-use pathway on the southwest side of Pleasant Street between Hwy 111 and Carleton Street

Project Background

Objectives

Summary of Study Area

Project Challenges

Routing & Concept Design Options

Evaluation Criteria

Next Steps

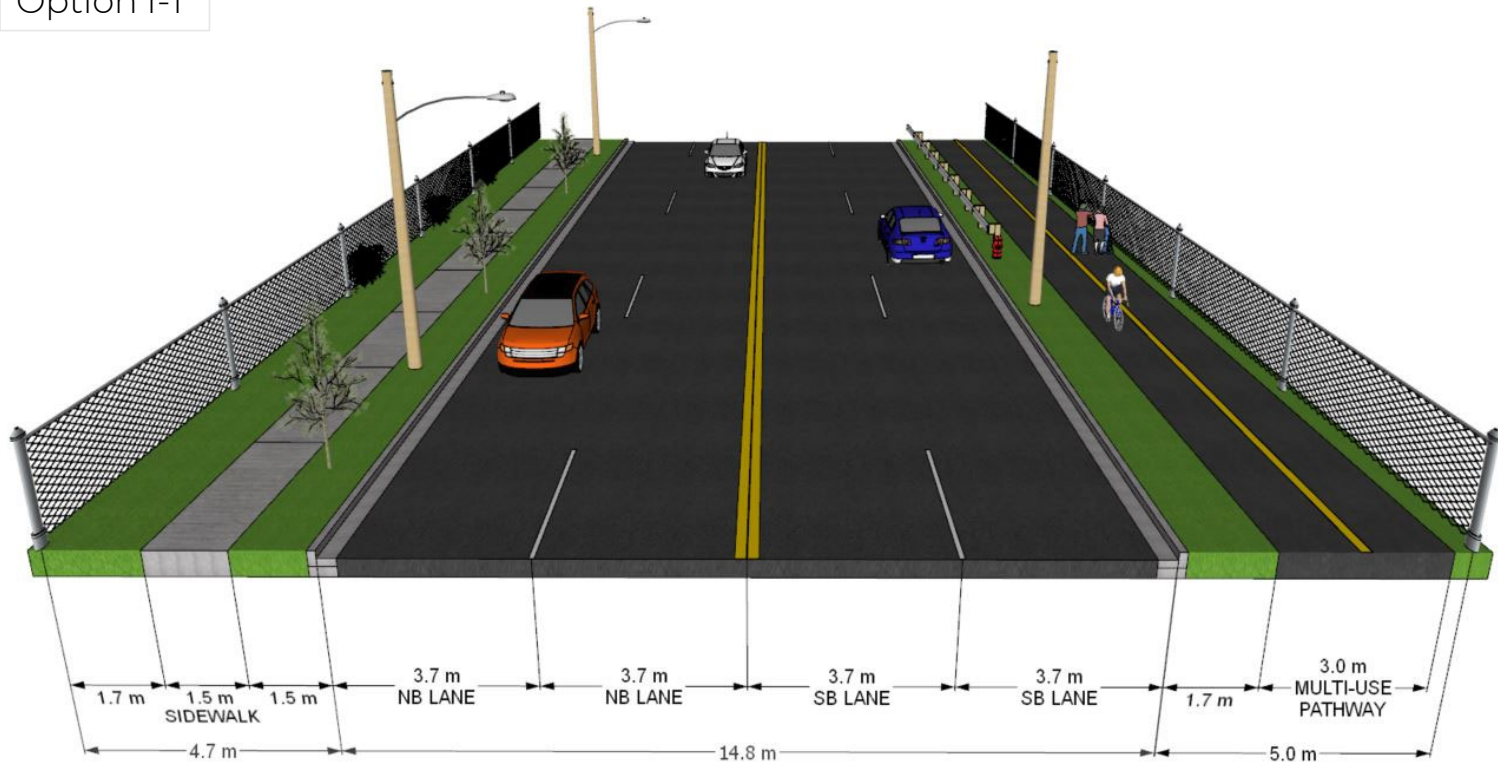
Q&A

Routing & Concept Design Options

I Pleasant St from Hwy 111 to Carleton St



Option I-1



Project Background

Objectives

Summary of Study Area

Project Challenges

Routing & Concept Design Options

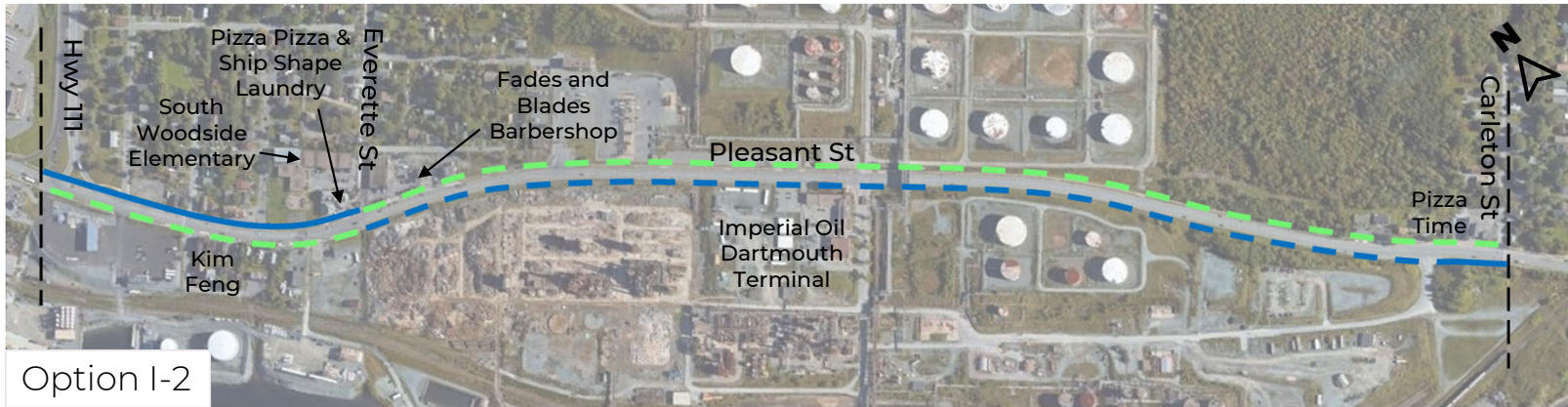
Evaluation Criteria

Next Steps

Q&A

Routing & Concept Design Options

I Pleasant St from Hwy 111 to Carleton St



Option I-2

- Proposed Multi-Use Pathway
- Proposed Sidewalk on Study Corridor
- Existing Sidewalk on Study Corridor

Option I-2

- Construct an asphalt multi-use pathway on the southwest side of Pleasant Street between Hwy 111 and Everett Street
- Construct an asphalt multi-use pathway on the northeast side of Pleasant Street between Everett Street and Carleton Street
- Construct a concrete sidewalk on the southwest side of Pleasant Street between Everett Street and the existing sidewalk segment close to Carleton Street

Project Background

Objectives

Summary of Study Area

Project Challenges

Routing & Concept Design Options

Evaluation Criteria

Next Steps

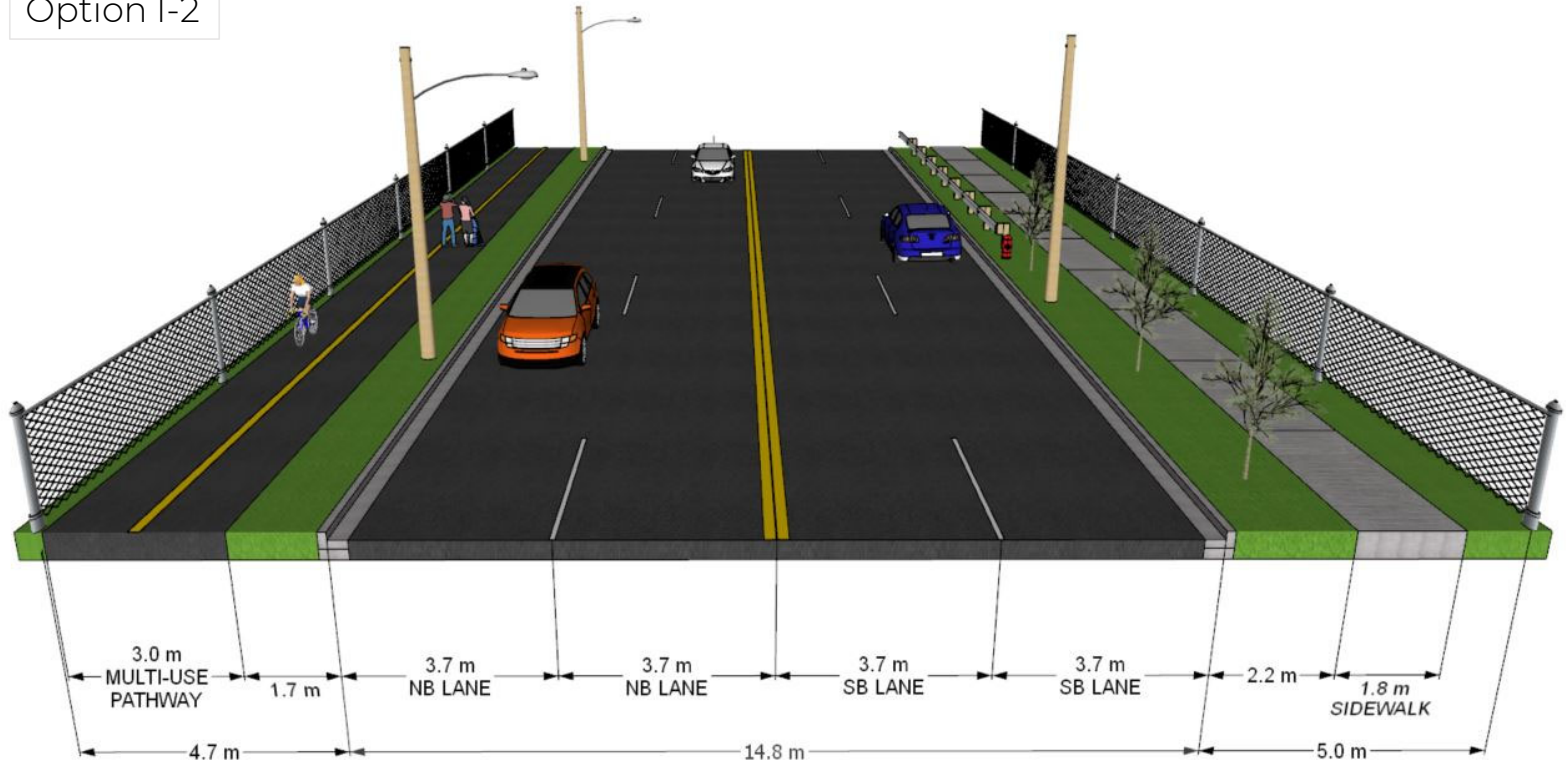
Q&A

Routing & Concept Design Options

I Pleasant St from Everette St to Carleton St



Option I-2



Project Background

Objectives

Summary of Study Area

Project Challenges

Routing & Concept Design Options

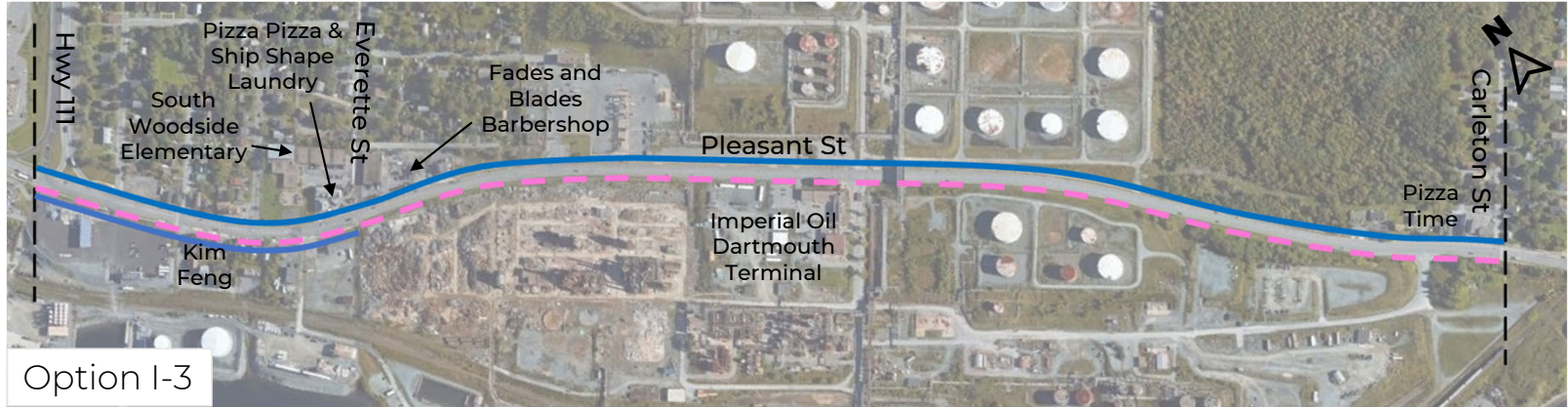
Evaluation Criteria

Next Steps

Q&A

Routing & Concept Design Options

I Pleasant St from Hwy 111 to Carleton St



Option I-3

— — — — — Proposed Bidirectional Bikeway

— Existing Sidewalk on Study Corridor

Option I-3

- Construct a bidirectional bikeway on the southwest side of Pleasant Street between Hwy 111 and Carleton Street

Project Background

Objectives

Summary of Study Area

Project Challenges

Routing & Concept Design Options

Evaluation Criteria

Next Steps

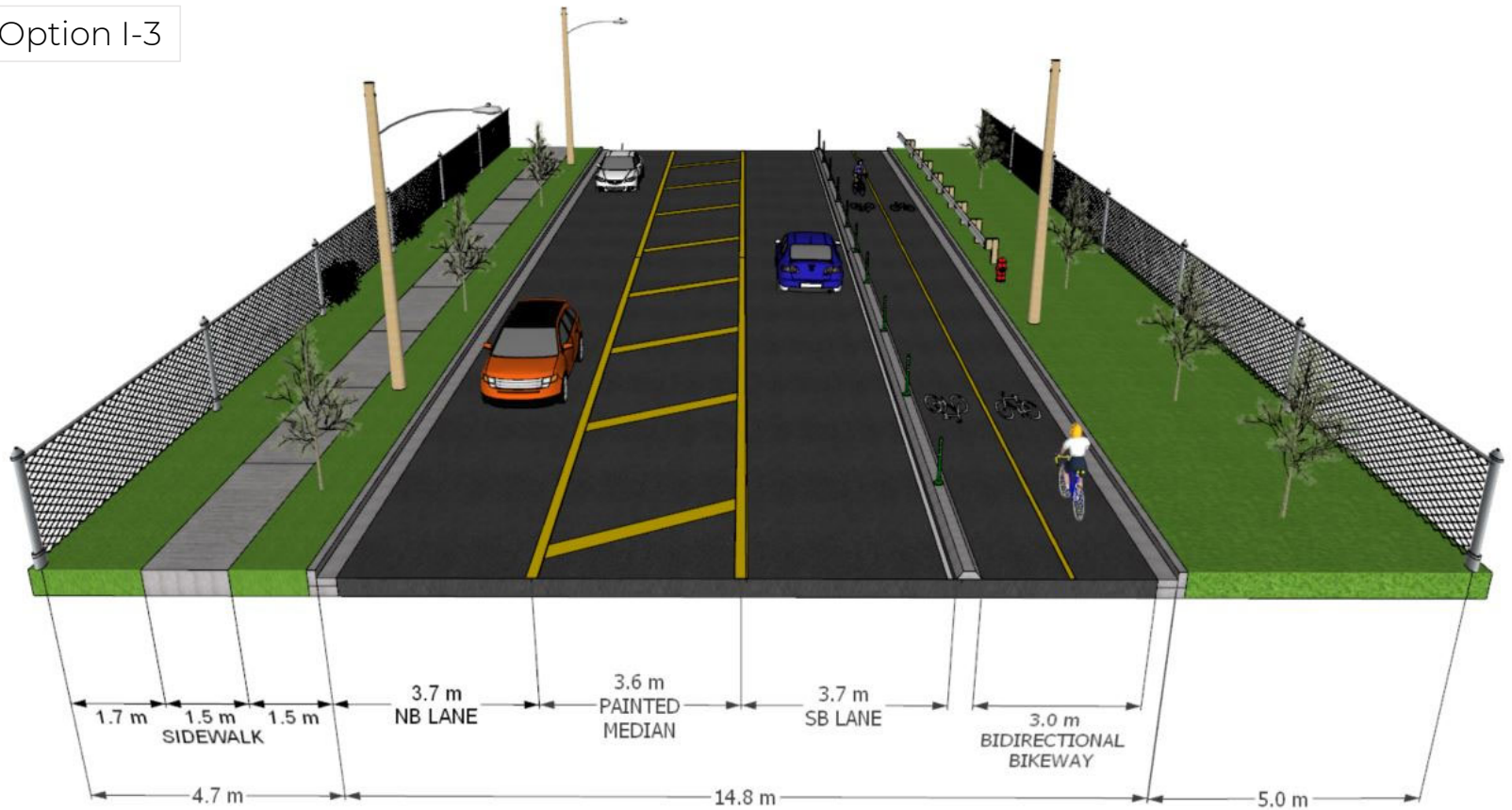
Q&A

Routing & Concept Design Options

I Pleasant St from Everette St to Carleton St



Option I-3



Project Background

Objectives

Summary of Study Area

Project Challenges

Routing & Concept Design Options

Evaluation Criteria

Next Steps

Q&A

Routing & Concept Design Options

Project Study Area Segments



P Pleasant Street Segment

W Woodside Ferry Terminal Segment

I Imperial Oil Segment

M Main Road Segment



Project Background

Objectives

Summary of Study Area

Project Challenges

Routing & Concept Design Options

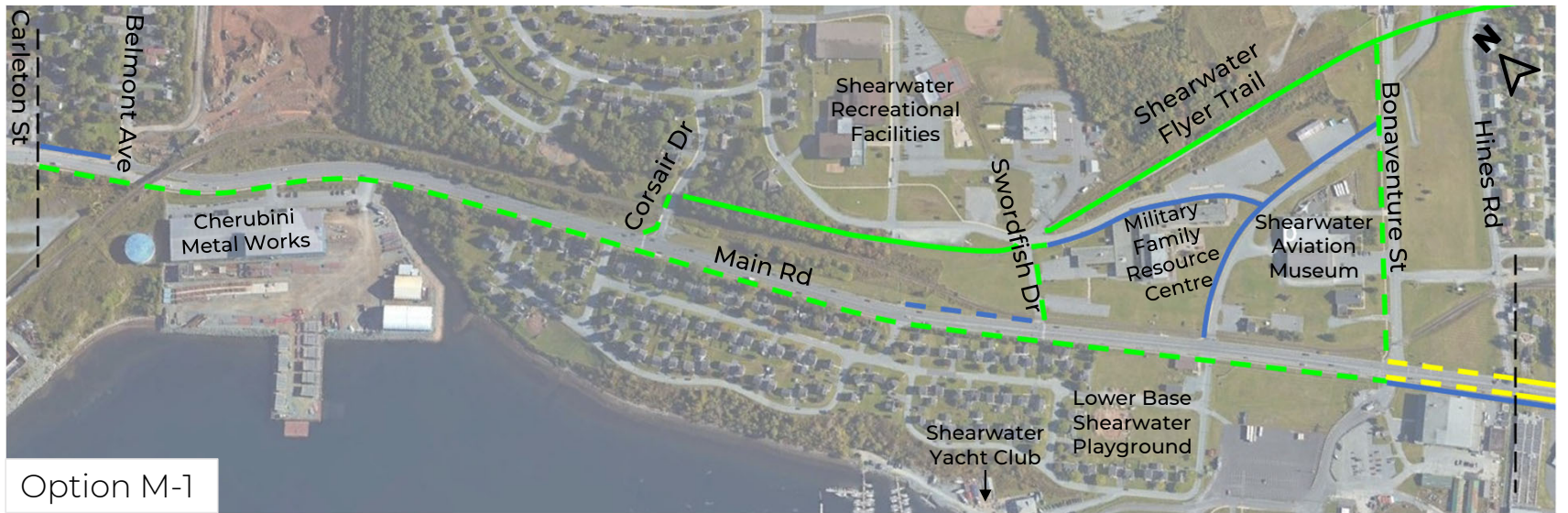
Evaluation Criteria

Next Steps

Q&A

Routing & Concept Design Options

M Main Rd from Carleton St to Hines Rd



Option M-1

- Proposed Painted Bike Lane (yellow dashed line)
- Existing Painted Bike Lane (yellow solid line)
- Proposed Multi-Use Pathway (green dashed line)
- Existing Multi-Use Pathway (green solid line)
- Proposed Sidewalk (blue dashed line)
- Existing Sidewalk (blue solid line)

Option M-1

- Construct an asphalt multi-use pathway on the southwest side of Main Road between Carleton Street and Bonaventure Street
- Extend the existing painted bike lanes to reach Bonaventure Street
- Construct three asphalt multi-use pathway connectors from Main Road to the Shearwater Flyer Trail via Corsair Drive, Swordfish Drive, and Bonaventure Street



Project Background

Objectives

Summary of Study Area

Project Challenges

Routing & Concept Design Options

Evaluation Criteria

Next Steps

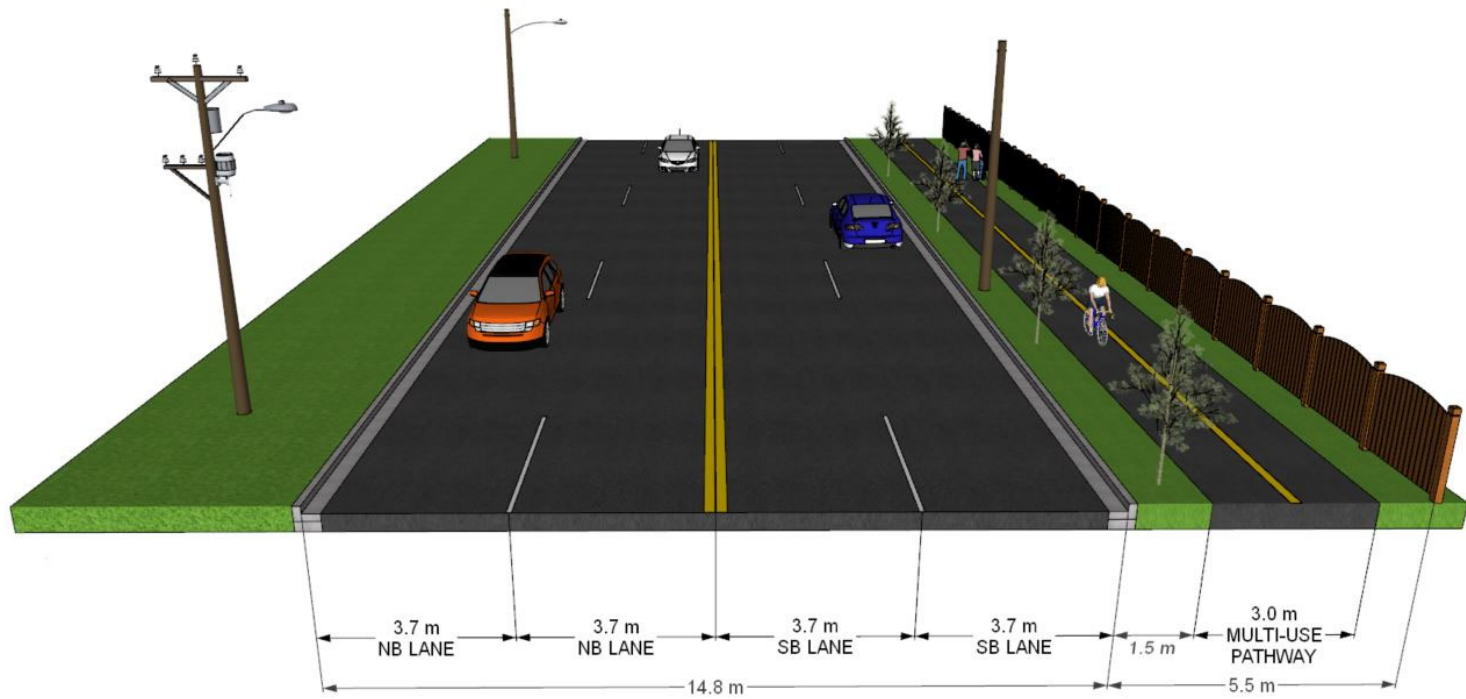
Q&A

Routing & Concept Design Options

M Main Rd from Carleton St to Bonaventure St



Option M-1



Project Background

Objectives

Summary of Study Area

Project Challenges

Routing & Concept Design Options

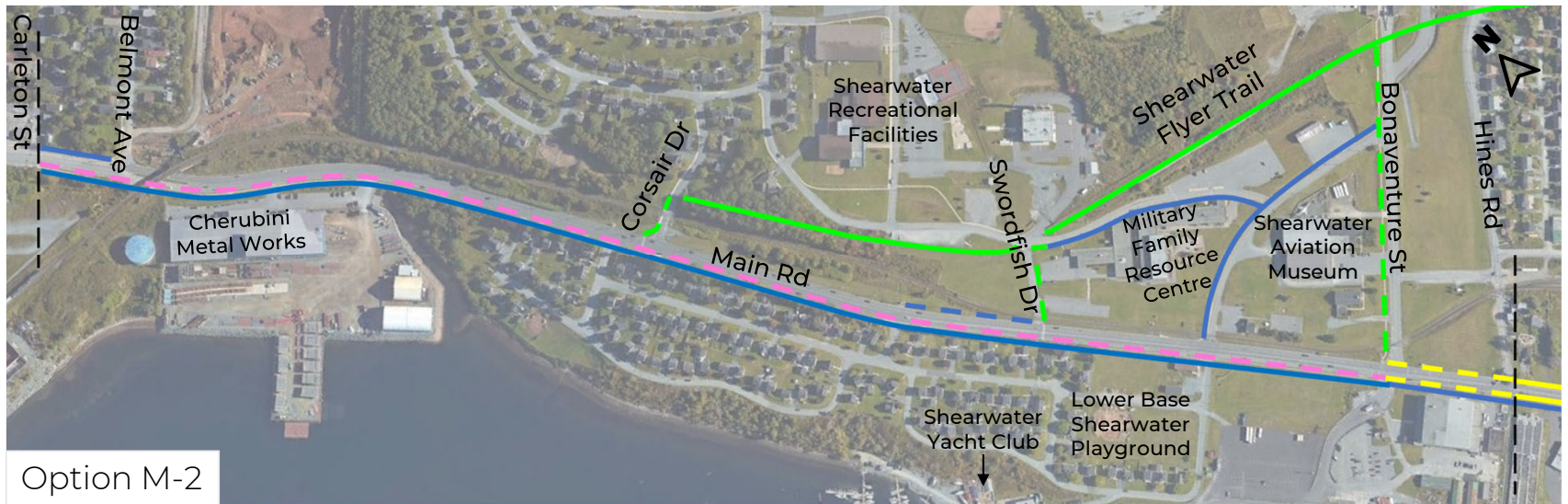
Evaluation Criteria

Next Steps

Q&A

Routing & Concept Design Options

M Main Rd from Carleton St to Hines Rd



Proposed / Existing Painted Bike Lane

Proposed / Existing Multi-Use Pathway

Proposed / Existing Sidewalk

Proposed Bidirectional Bikeway

Option M-2

- Construct a bidirectional bikeway on the southwest side of Main Road between Carleton Street and Bonaventure Street
- Extend the existing painted bike lanes to reach Bonaventure Street
- Construct three asphalt multi-use pathway connectors from Main Road to the Shearwater Flyer Trail via Corsair Drive, Swordfish Drive, and Bonaventure Street

Project Background

Objectives

Summary of Study Area

Project Challenges

Routing & Concept Design Options

Evaluation Criteria

Next Steps

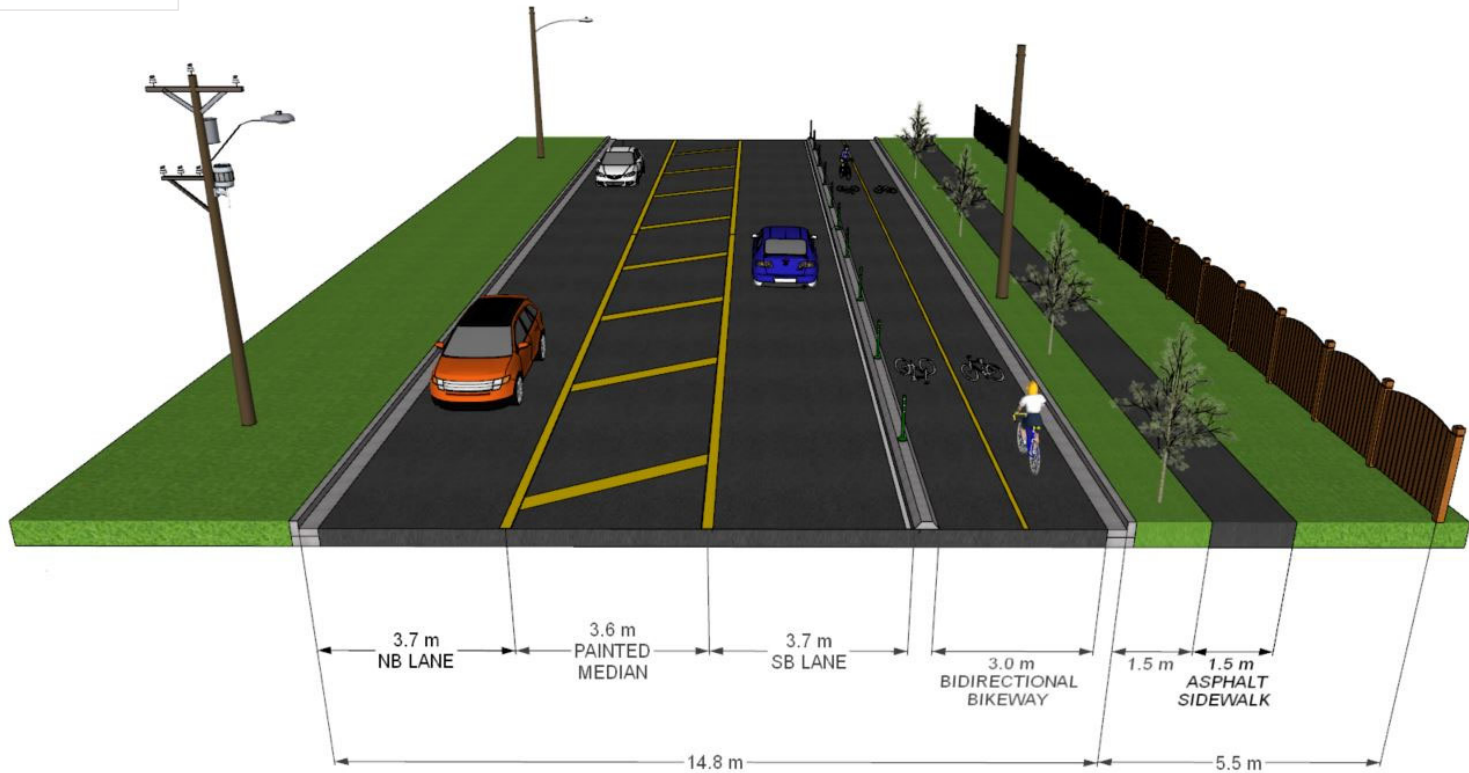
Q&A

Routing & Concept Design Options

M Main Rd from Carleton St to Bonaventure St



Option M-2



Project
Background

Objectives

Summary of
Study Area

Project
Challenges

Routing &
Concept
Design Options

Evaluation
Criteria

Next Steps

Q&A

Evaluation Criteria

Concept Design options will be evaluated based on the following:

- Connectivity, Directness & Cohesion
- Comfort for All Active Transportation Users
- Safety & Accessibility
- Impact to:
 - Traffic, Transit & Rail
 - Environment (Trees & Green Spaces)
 - Utilities
 - Property
- Public & Key Stakeholder Feedback Response
- Internal HRM Review
- Cost and Ease of Implementation



Project
Background

Objectives

Summary of
Study Area

Project
Challenges

Routing &
Concept
Design Options

Evaluation
Criteria

Next Steps

Q&A

Next Steps

- ✓ Project Initiation and Management
 - ✓ Site Walk & Obtain Data
- ✓ Stakeholder Meetings
 - ✓ Community Online Workshops (September & October 2020)
- ✓ Review of Existing Conditions
- ✓ Conceptual AT Facility Design Options
 - Public and Stakeholder Engagement
 - ✓ ATAC Meeting – June 2022
 - Public Open House – June 2022
 - AT Facility 30% Design
 - Final Report (Summer 2022)





Project
Background

Objectives

Summary of
Study Area

Project
Challenges

Routing &
Concept
Design Options

Evaluation
Criteria

Next Steps

Q&A

Q & A

Please raise your hand if you have a question and/or comment for the project team and we'll answer them in sequence