

Wildlife corridor report

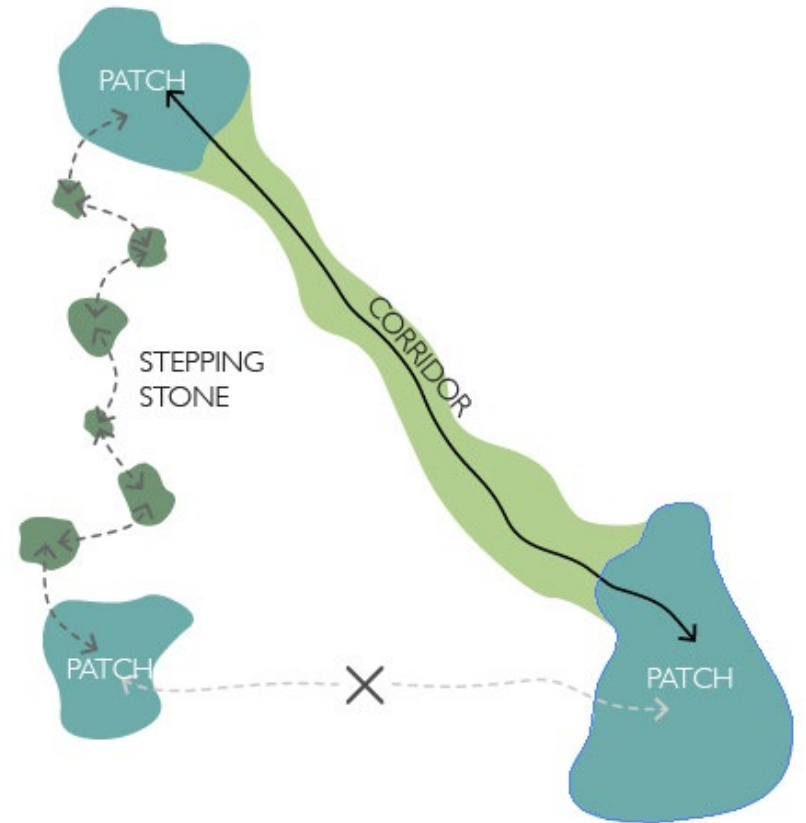
Karen McKendry
Ecology Action Centre



Wildlife corridors

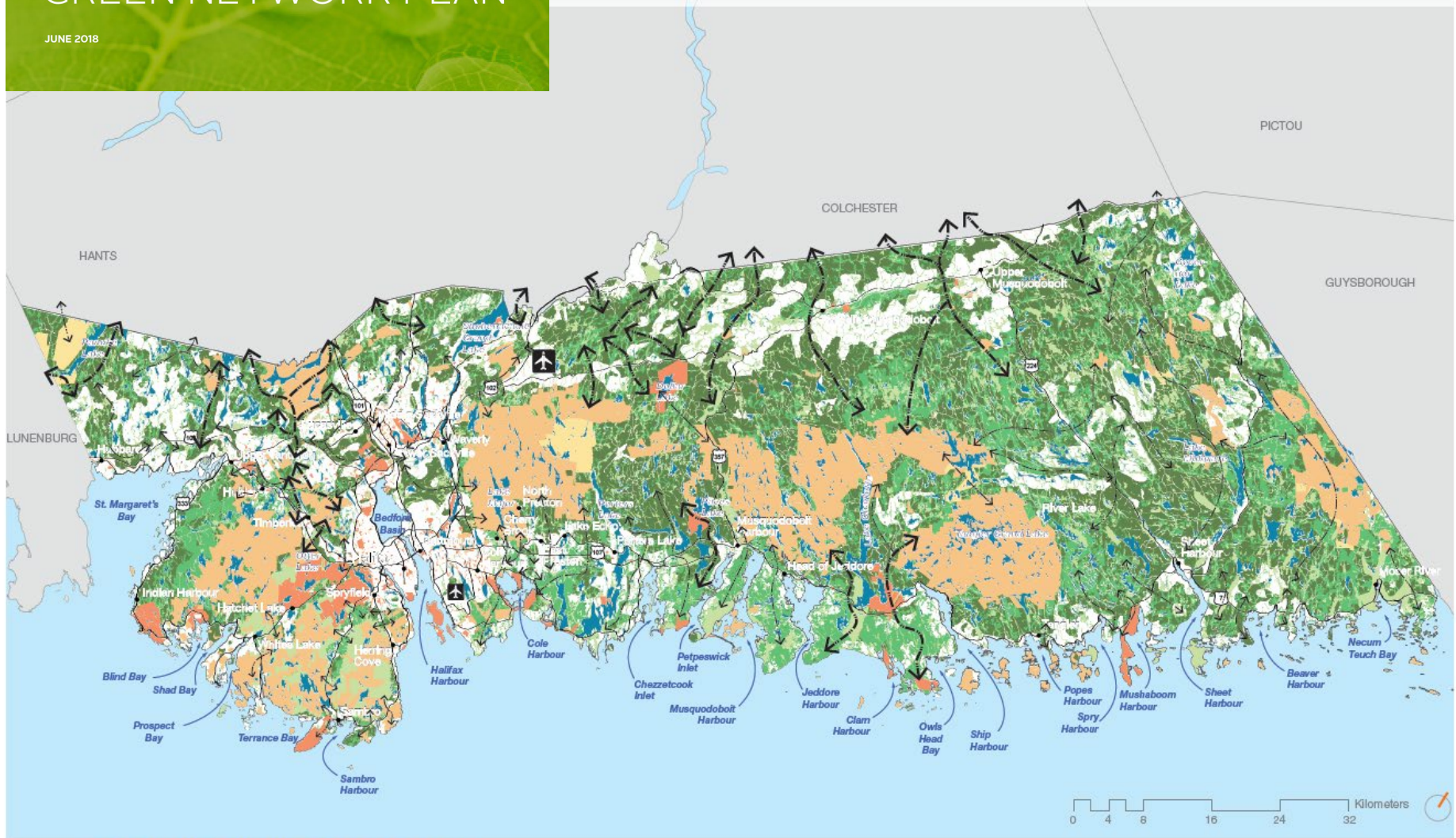
Natural paths
used by organisms
to disperse from
one place to
another



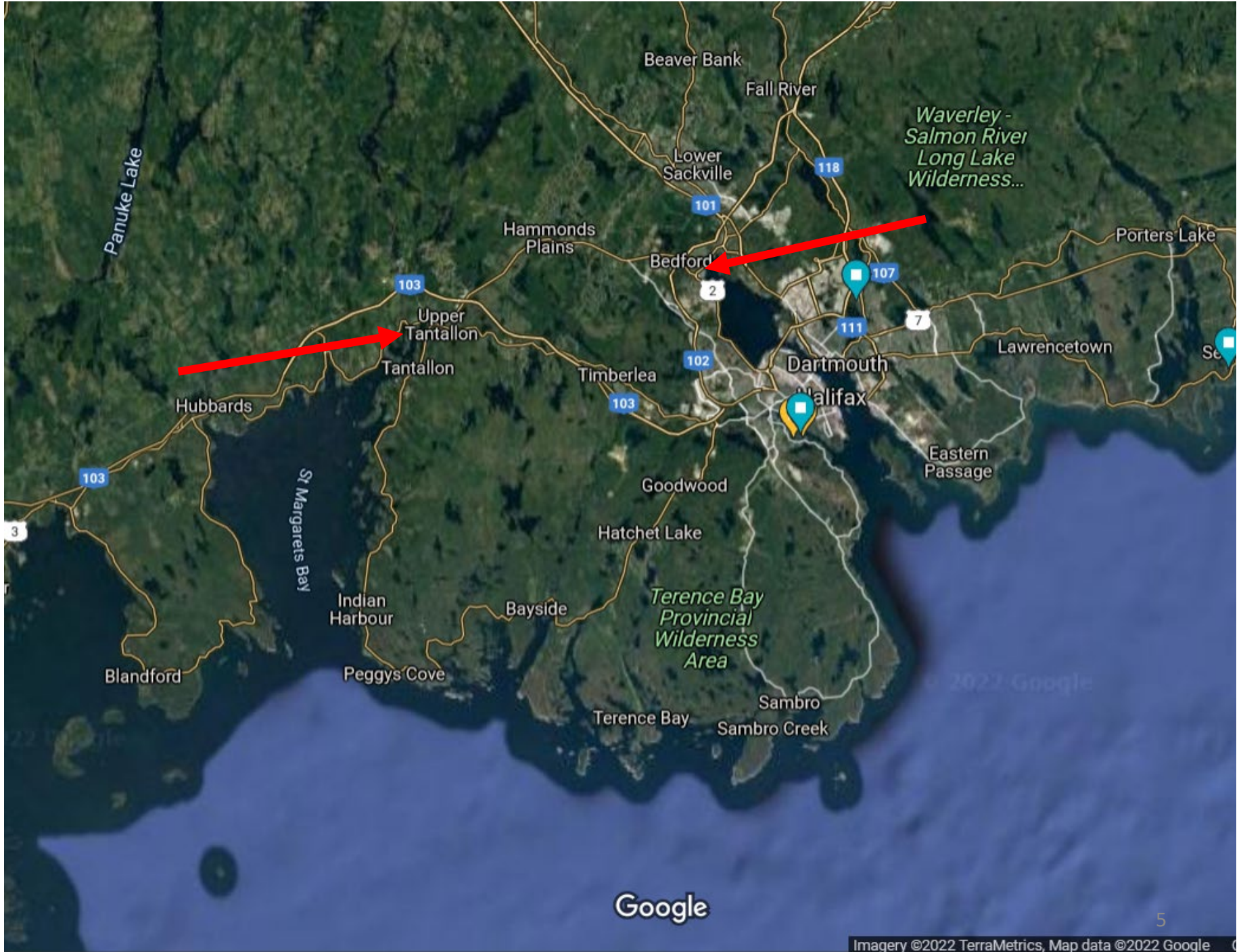


HALIFAX GREEN NETWORK PLAN

JUNE 2018

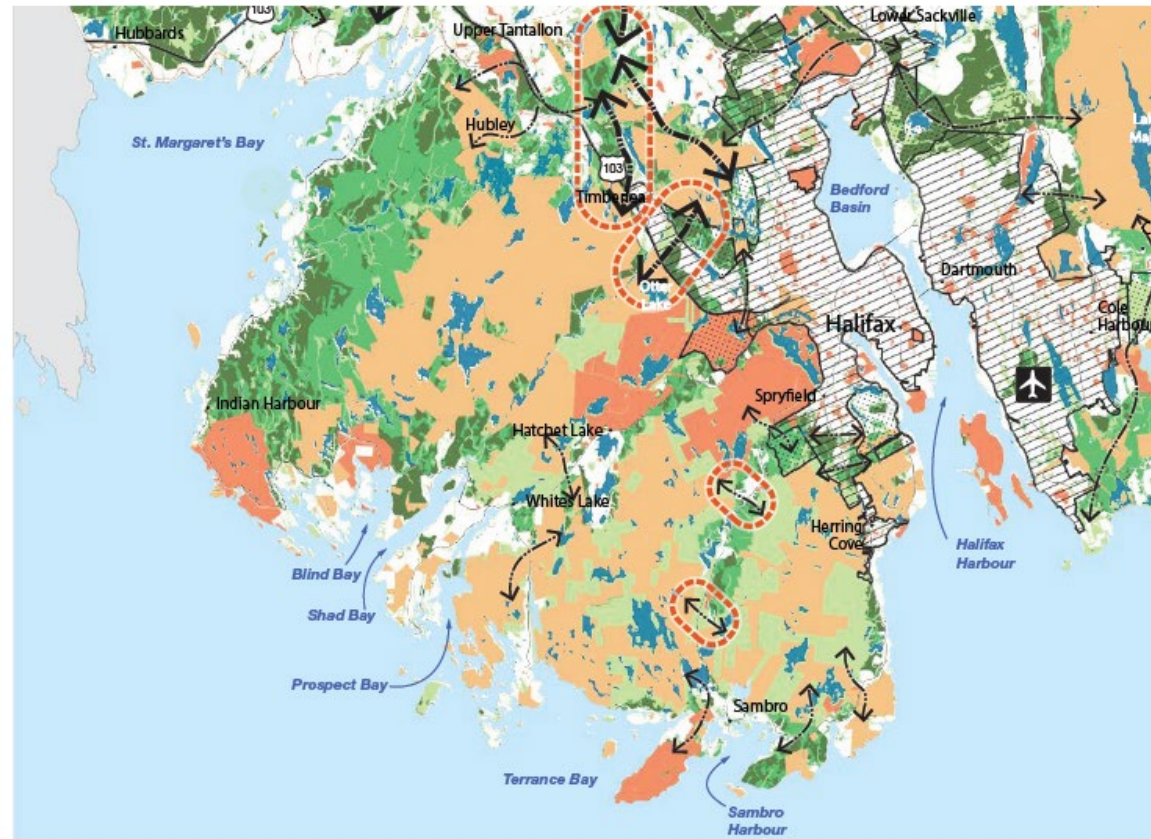


Map 5: GREEN NETWORK ECOLOGY MAP



Maintain and improve natural connections between the Chebucto Peninsula and Mainland Nova Scotia, as well as those within the Peninsula itself.

Action 32: Amend the Regional Plan and Municipal Planning Strategies to prioritize the preservation and creation of natural connections to the Chebucto Peninsula (Map 9) from the Mainland when reviewing development proposals and updating planning policies and zoning in the area. Specific connections to review and prioritize are highlighted on Map 9.



Map 9: GREEN NETWORK (ZOOMED INTO THE CHEBUCTO PENINSULA)



WILDLIFE CORRIDOR LANDSCAPE DESIGN CHARRETTE

Chebucto-Timberlea-Sandy Lake area of Halifax, NS

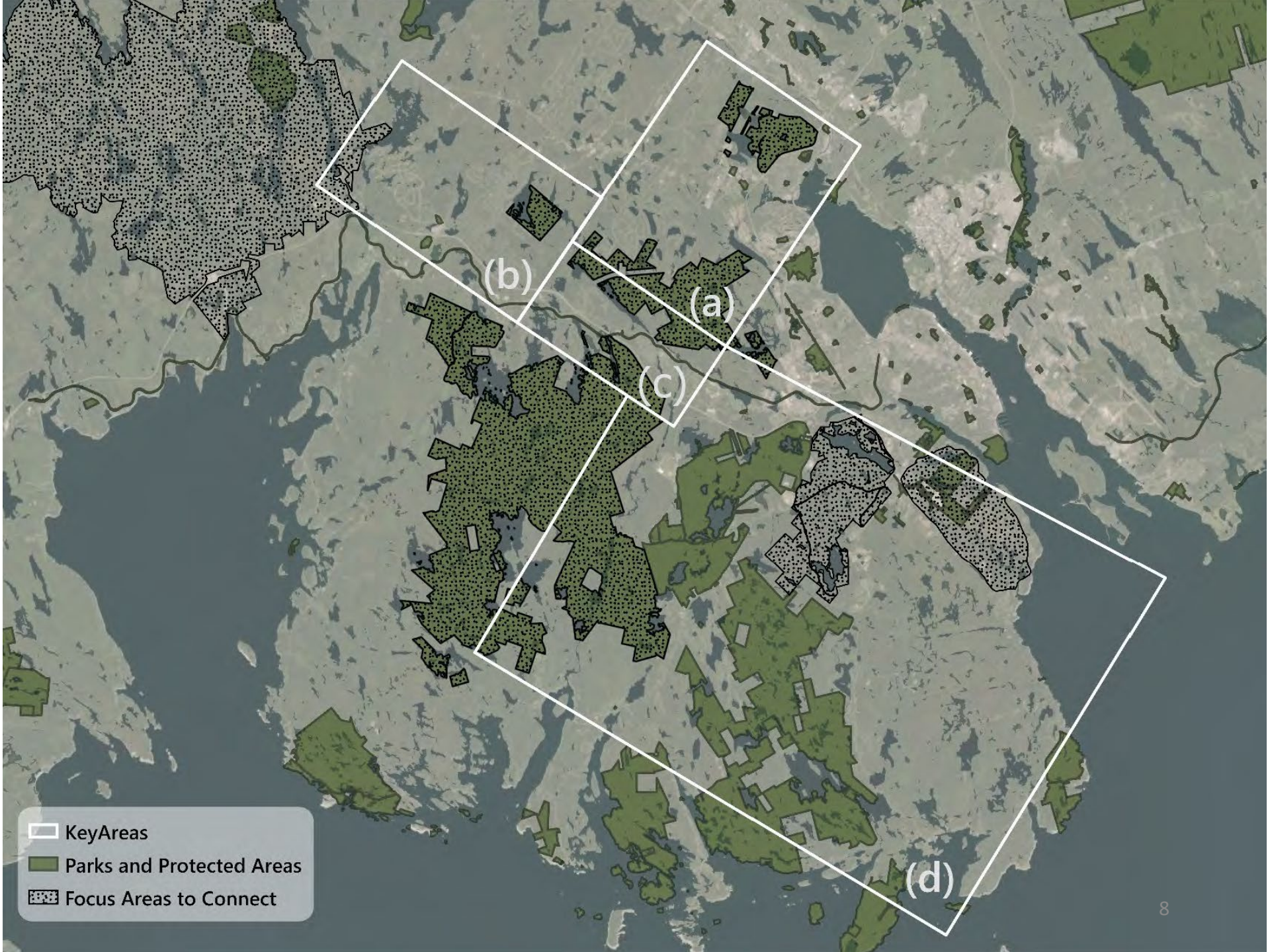
Summary Document



NOVA SCOTIA CROWN SHARE LAND LEGACY TRUST

Halifax, NS, March 2021

- 24 participants
- Wildlife biologists, academics, conservation planners, urban planners, local community group leaders
- Results: report + maps, data layers



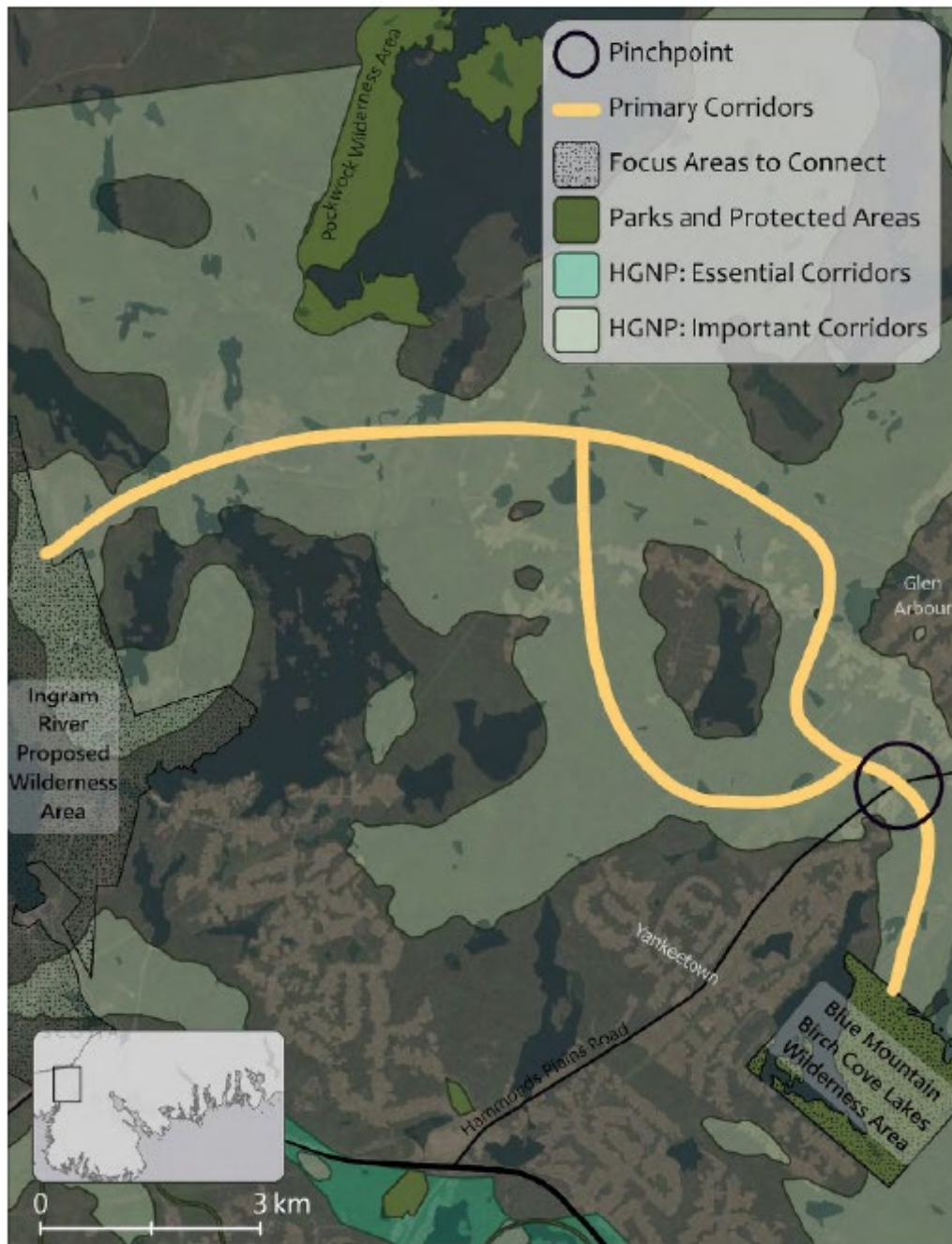


Figure 10 Corridors identified in the northern part of the area of interest

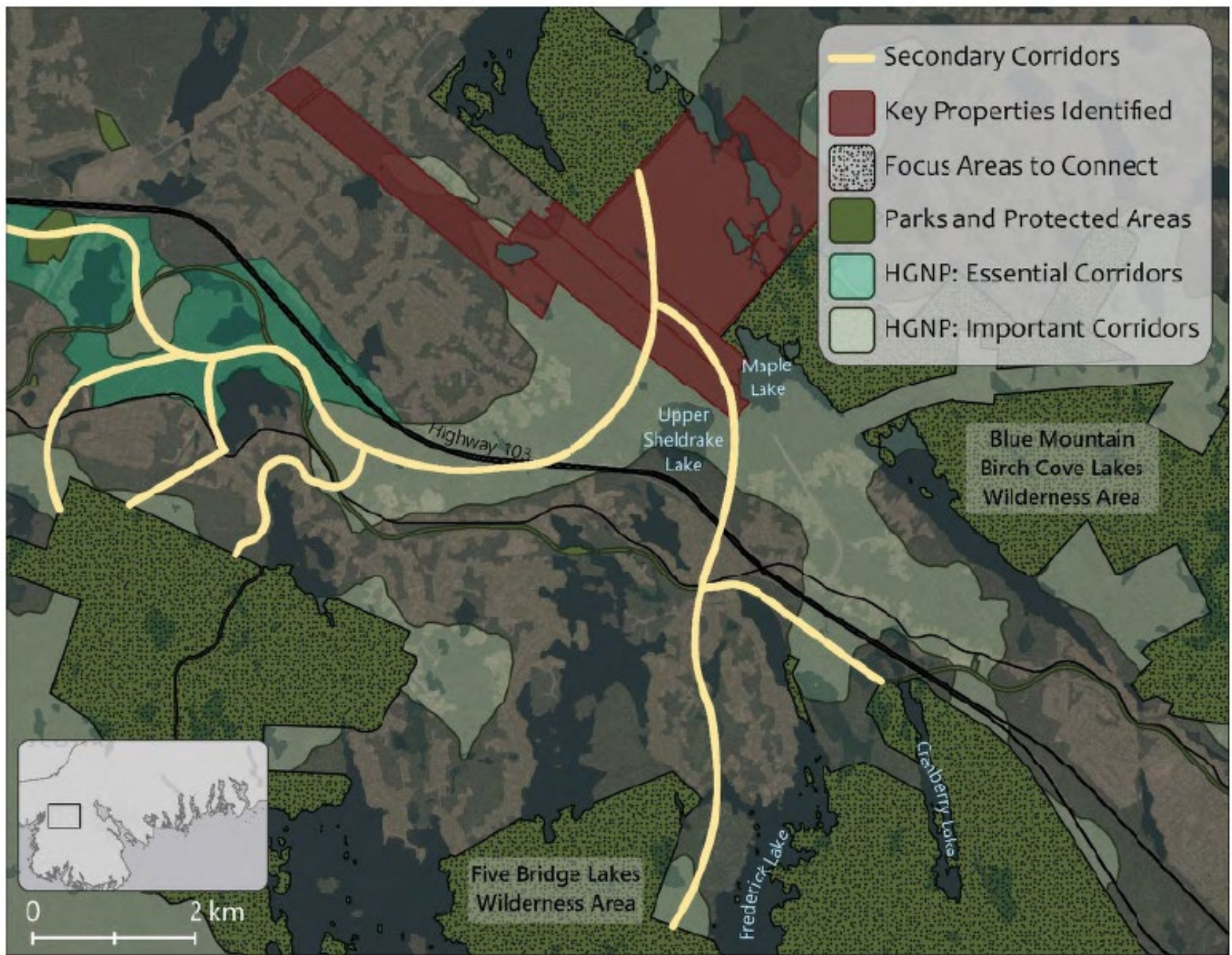


Figure 18. Secondary connection identified between Blue Mountain Birch Cove Lakes and Five Bridge Lakes Wilderness Areas

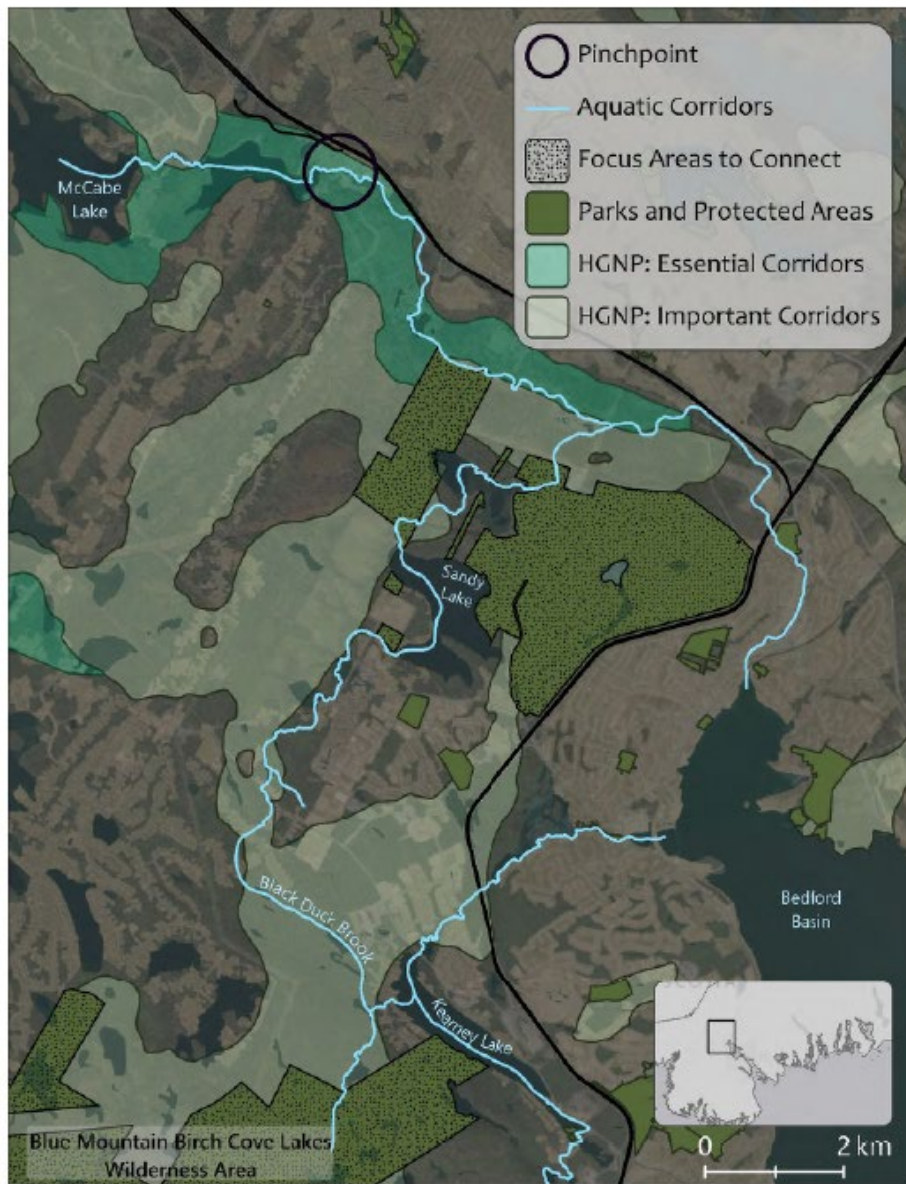


Figure 6. Aquatic Connectivity in the area around the Sackville River and Sandy Lake to Blue Mountain Birch Cove Lakes



Figure 23. Connectivity within the Backlands



Figure 5. Pinchpoint around the intersection of Hammonds Plains Road and Larry Uteck Boulevard

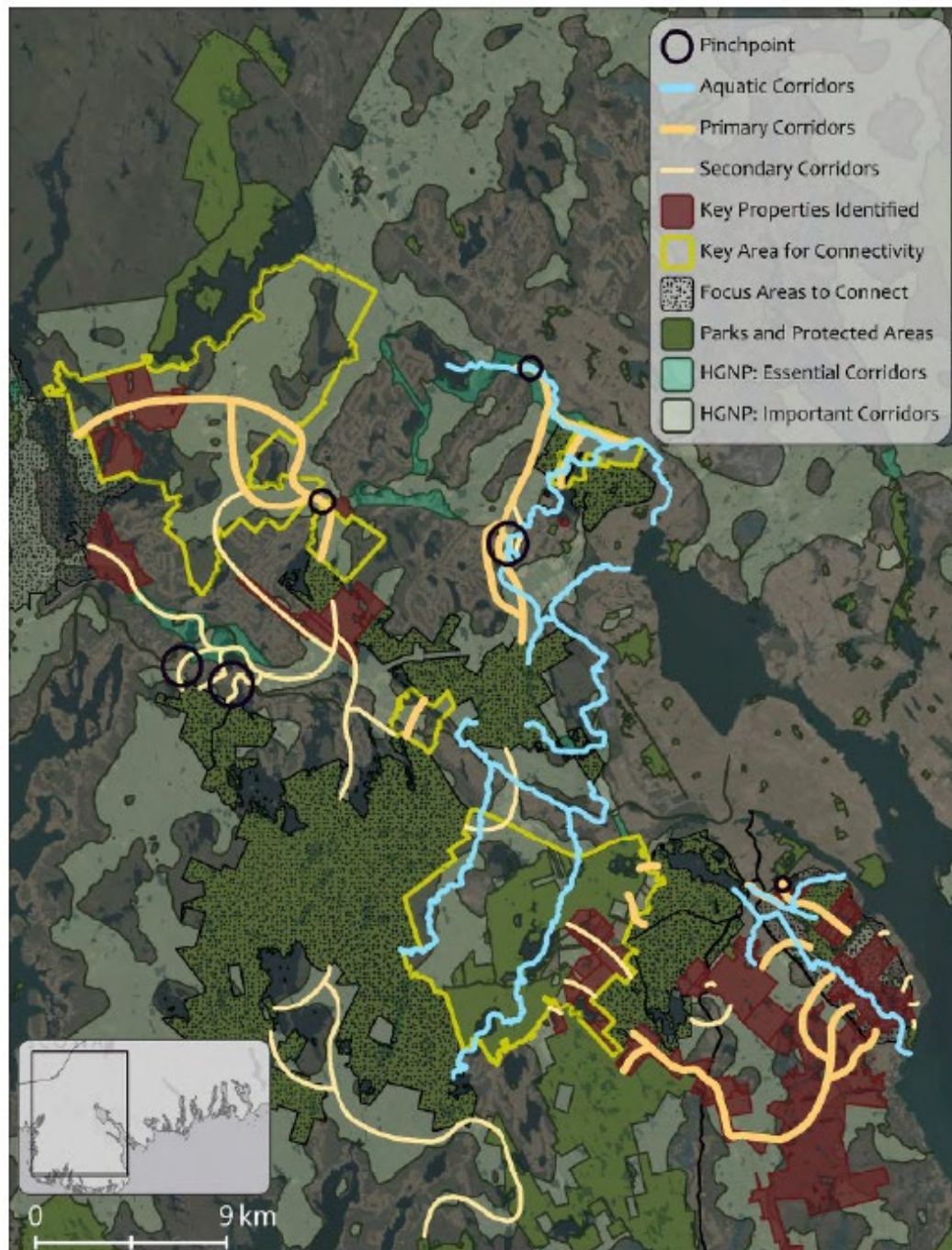
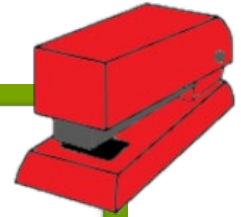


Figure 30. Summary map showing the work of all of the groups during the charrette

HALIFAX GREEN NETWORK

JUNE 2018



WILDLIFE CORRIDOR LANDSCAPE DESIGN CHARRETTE

Chebucto-Timberlea-Sandy Lake area of Halifax, NS
Summary Document



NOVA SCOTIA CROWN SHARE LAND LEGACY TRUST
Halifax, NS, March 2021