

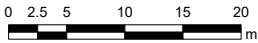
Required passageway: to extend and be open between Prince and Sackville Streets, with entrances aligned with Grafton Street.

- minimum 7.6 m floor-to-ceiling height below building
- minimum width of 13.6 m

Schedule 8: Publicly Sponsored Convention Centre

HALIFAX
 Regional Centre
 Land Use By-Law

HRM does not guarantee the accuracy of any base map representation on this plan.



Last Updated 9/23/2021