



Western Common Wilderness Common

HRM Parks and Recreation

Background

- The Western Common was created as a result of Regional Council's adoption of the planning for the Western Common study in 1999 – priorities based on this study were as follows;
 - Hosting the Regional Waste Resource Landfill (Otter Lake)
 - Public Recreation
 - Wilderness and Ecological Protection
 - Protection of cultural resources
 - Transportation routes
 - Possible growth of business parks and residential communities

Background

- Regional Council directed staff to refine the conceptual plan in 2008 through a more detailed examination of the lands and public objectives. The resulting master plan was adopted by Regional Council June 15, 2010, recognizing the goals of the Western Common to provide;

Background

- A place for the Regional Waste Resource Facility to deal with waste without undue hardship on host communities
- Lands for wilderness recreation, protection of water quality of the Nine Mile and Prospect River watersheds, preservation of cultural landscapes and to sustain natural connections to other open spaces
- Possible future business park expansion at Ragged Lake Business Park to aid in economic development in the region

Formation and Structure of Committee

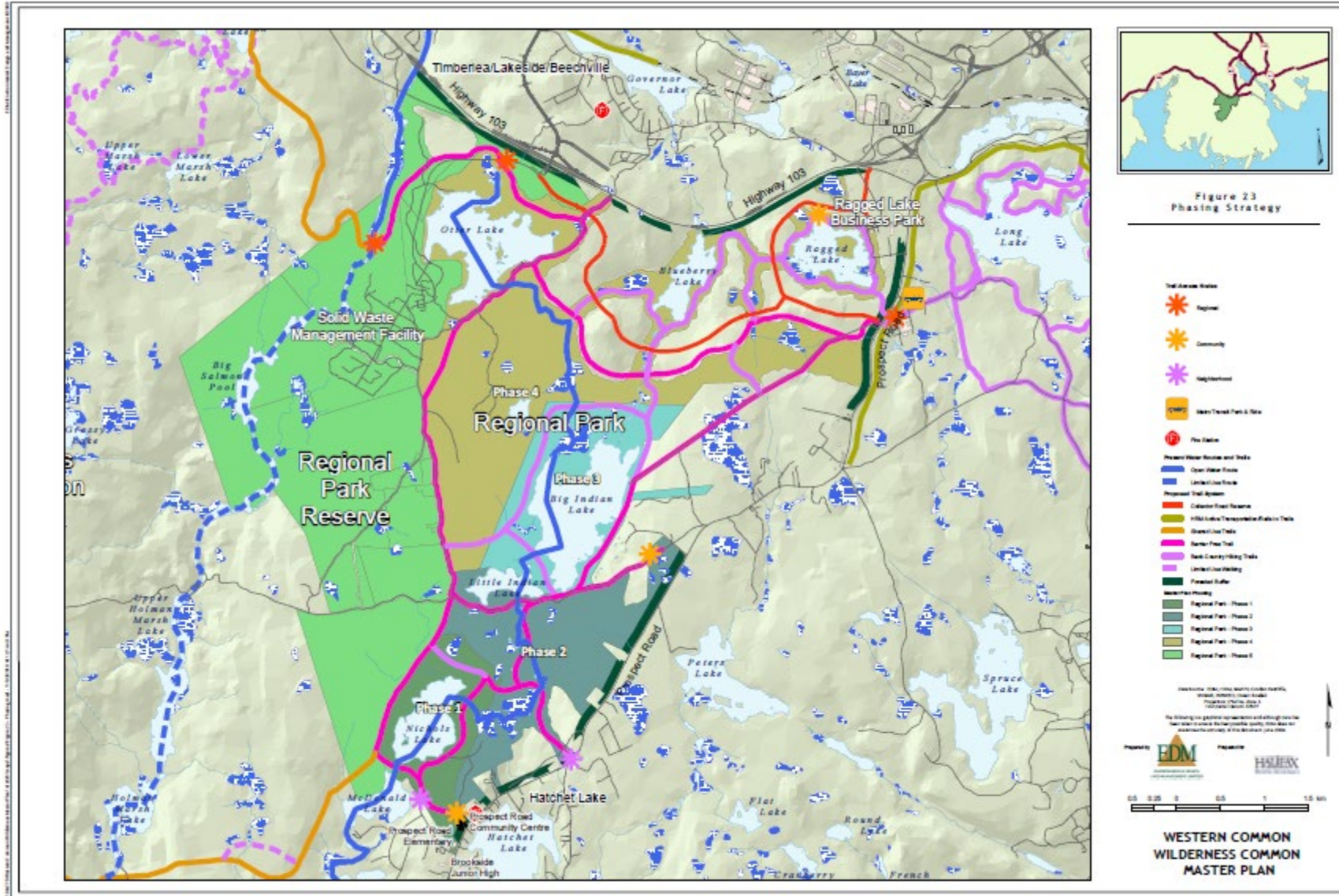
- On May 31, 2016, Regional Council established the Western Common Advisory Committee (WCAC) by Administrative Order 2016-001-GOV
- Committee includes representation from the local business community, knowledge of public recreation and trails, knowledge of applied ecological sciences, member of environmental NGO, community member of Goodwood/Hatchet Lake, community member of Beechville/Timberlea, two members at large with interest in furtherance of the Park, one member of Halifax and West Community Council

Duties of the Committee

- “The Committee shall monitor the phased development of the Western Common and advise Council, through the Halifax and West Community Council, on the community perspective of the implementation of the Master Plan as follows:
 - (a) The Committee shall advise Council on detailed planning and development of the Park; and

Duties of the Committee (cont.)

- (b) The Committee shall advise Council on environmental sustainability of the Park, including:
 - (i) public access and wilderness recreation programming;
 - (ii) Impact of land uses, within and adjacent to the Western Common, on the Park;
 - (iii) ecological diversity and connectivity;
 - (iv) cultural landscapes; and
 - (v) park operational matters”



Trail Construction

- Approximately two kilometers of trail has been cleared, grubbed and has type 1 and 2 gravel with deep ruts
- Phase 1 trail is located behind the Prospect Road Community Centre (trail splits at Nichols Lake)
- There are two branches of the initial section of trail which meet water crossings
- Completing these initial sections would mean a new construction access from McDonald Lake Subdivision would need to be developed

6.1.4 Trails

The master plan calls for creation of 61 kilometres of trails within the Regional Park. These trails would be built to an accessible standard, and would be similar to trails found in locations like Point Pleasant Park. The trail types examined for this Master Plan are:

1. Shared-Use Trail (Motorized)
2. Shared-Use Trail (Non-Motorized)
3. Shared-Use Trail (Barrier Free Trail)
4. Shared-Use Trail (Back Country Hiking Trail)

Appendix F contains profiles of potential trail types. Most of the trails will be constructed using the Back Country Hiking trail profile. This trail type is a 2-foot-wide hiking trail constructed from site materials. A large section of trail will be a 6-foot-wide Barrier-Free Trail (see **Figure 6.1**).

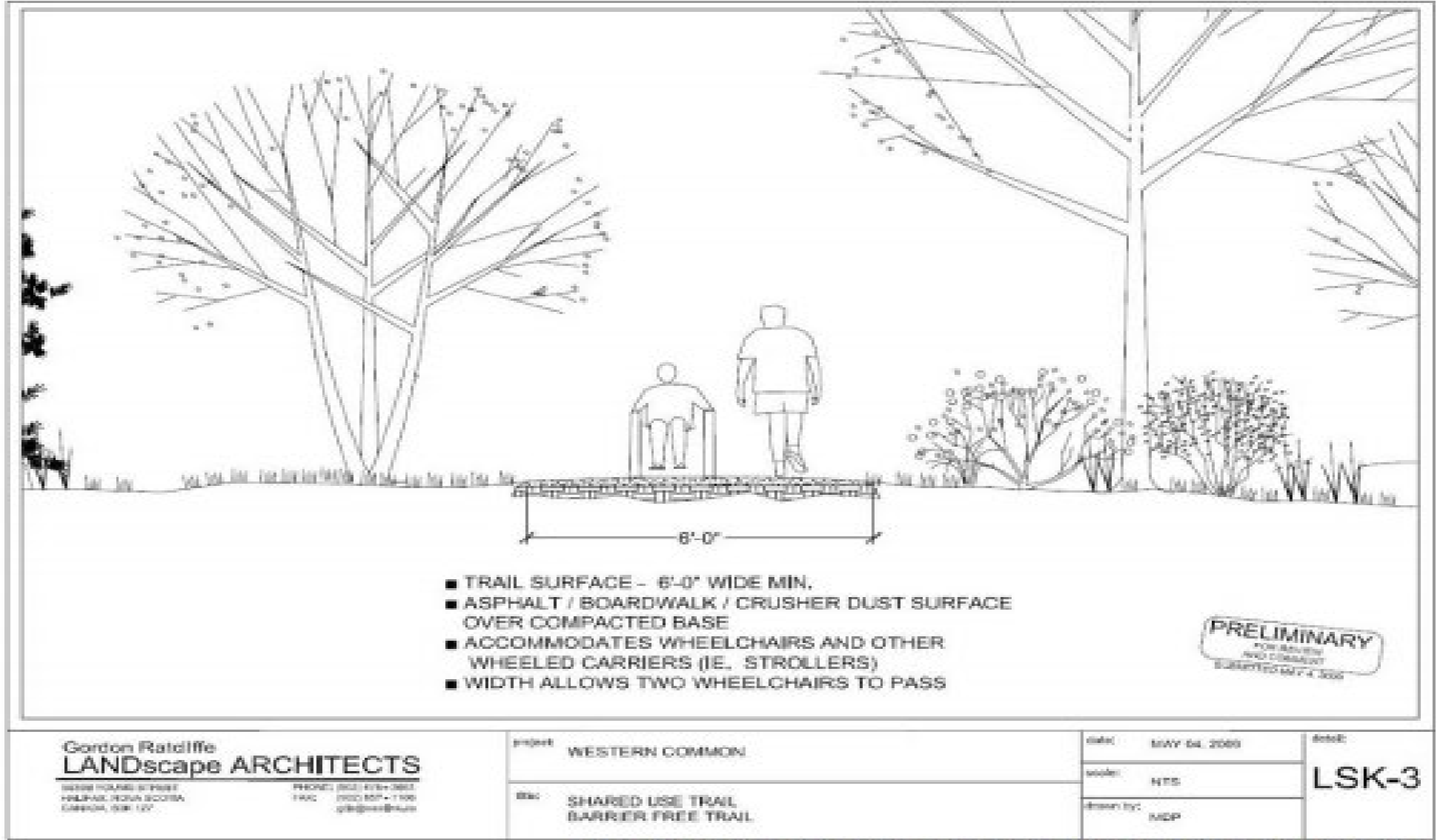


Figure 6.1: Trail Profile for Trails in the Wilderness Common

Budget

Project	Cost
Phase 1: Trail Construction (2016/17)	\$43,150
Consulting (2016)	\$4,795
Phase 2: Trail Construction (2018)	\$94,077
Consulting (preliminary bridge design) (2019)	\$9,900
Trail Layout Report (2019)	\$6,425
Detailed Bridge Design (2019)	\$54,555
Approximate total	\$212,900

Challenges

Aspect	Mitigation
Trail width (ongoing)	Selection of appropriate construction equipment
Water crossings (ongoing)	Dependent on trail type
Low lying areas (ongoing)	Consult with Province throughout trail construction
Barrier free classification (ongoing)	Managing grades through trail design and construction

TITLE
**PROPOSED TRAILS
(MAP VIEW)**

CLIENT
 Cobequid
CONSULTING

CREATED BY
Angharad Wylie

REVIEWED BY
Bruce Mans

APPROVED BY
Bruce Mans

DATE
10/31/2019

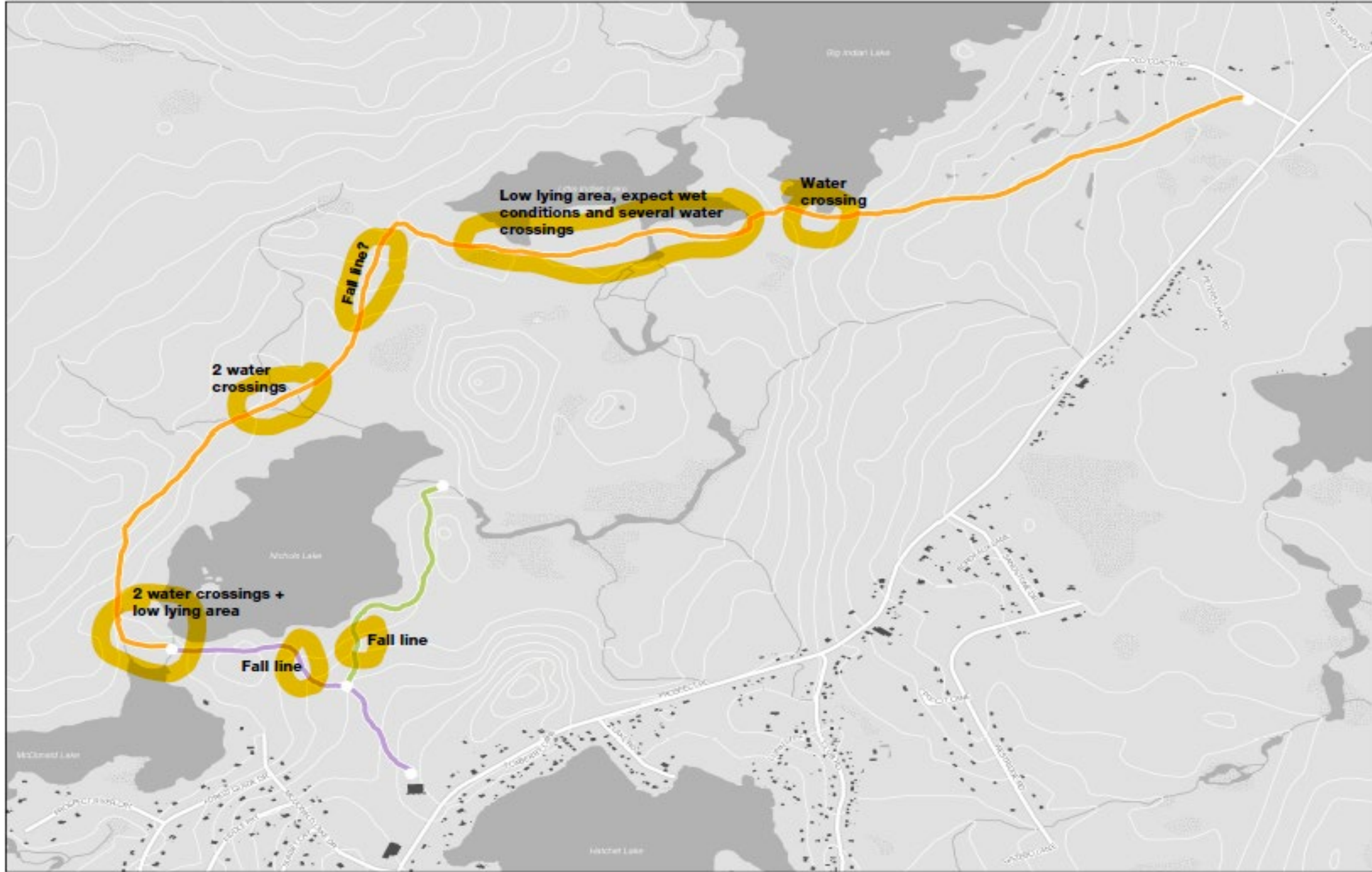
NOTES

- Proposed Trails:
- Nichols Lake Falls Trail 
 - Nichols Lake Trail Phase 1 - Community Centre 
 - Western Common Phase 1 

NORTH 

SCALE
0 20m 1:15,000

MAP #



On the horizon

- Discussion and direction on further implementation of barrier free trails
- Determination of water crossings
- Trailhead parking
- Allocation of Community Integration Funds from organic sorting facility expansion
- HRM Corporate Real Estate study of Ragged Lake lands

Questions...