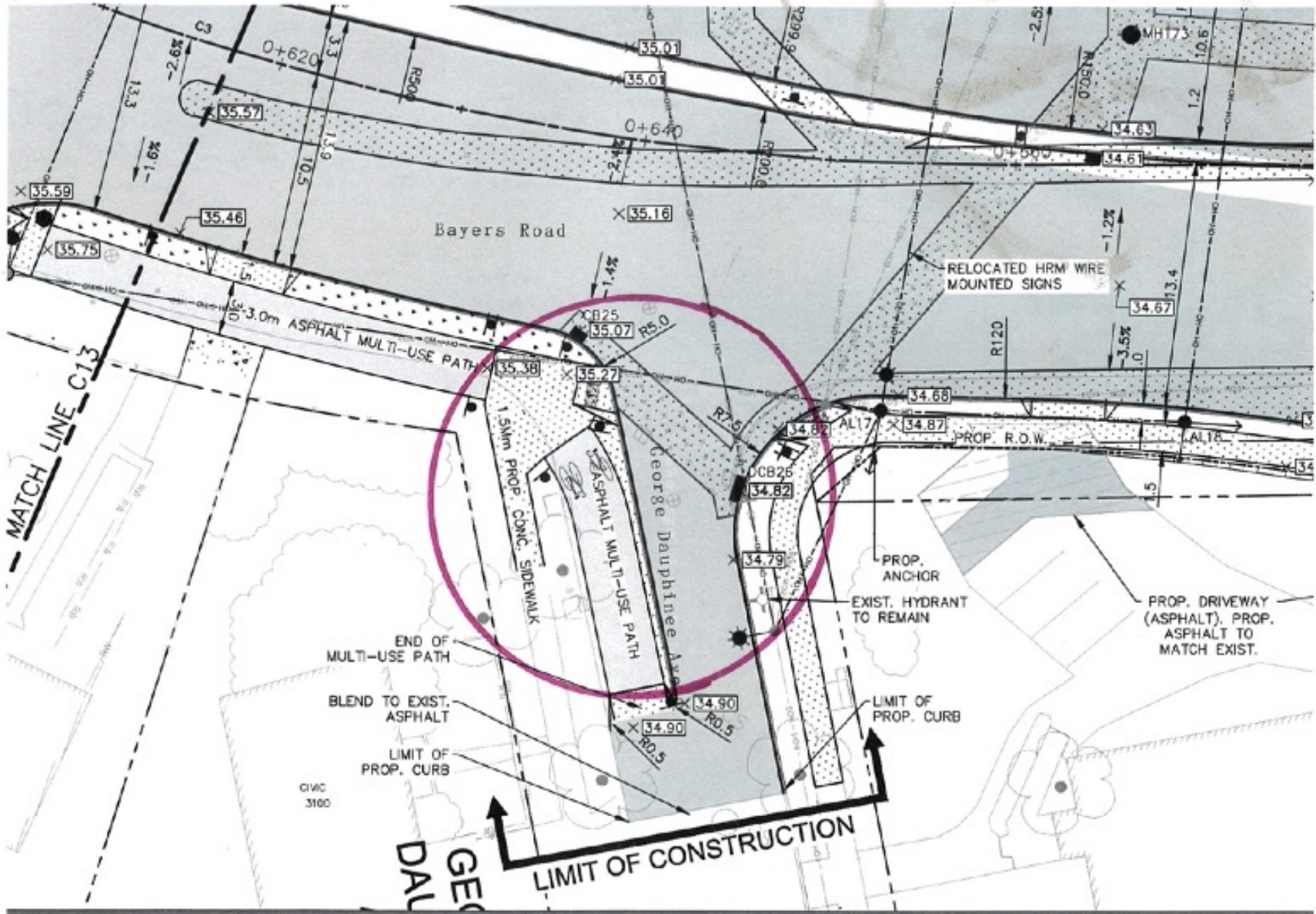


George Dauphinee Access Closure

Eric Thomson

Ted Vaughan

Bill Campbell (Planner)



MATCH LINE C13

Bayers Road

RELOCATED HRM WIRE MOUNTED SIGNS

3.0m ASPHALT MULTI-USE PATH

3.0m PROP. CONC. SIDEWALK

ASPHALT MULTI-USE PATH

George Dauphinee Road

PROP. ANCHOR

EXIST. HYDRANT TO REMAIN

PROP. DRIVEWAY (ASPHALT). PROP. ASPHALT TO MATCH EXIST.

END OF MULTI-USE PATH

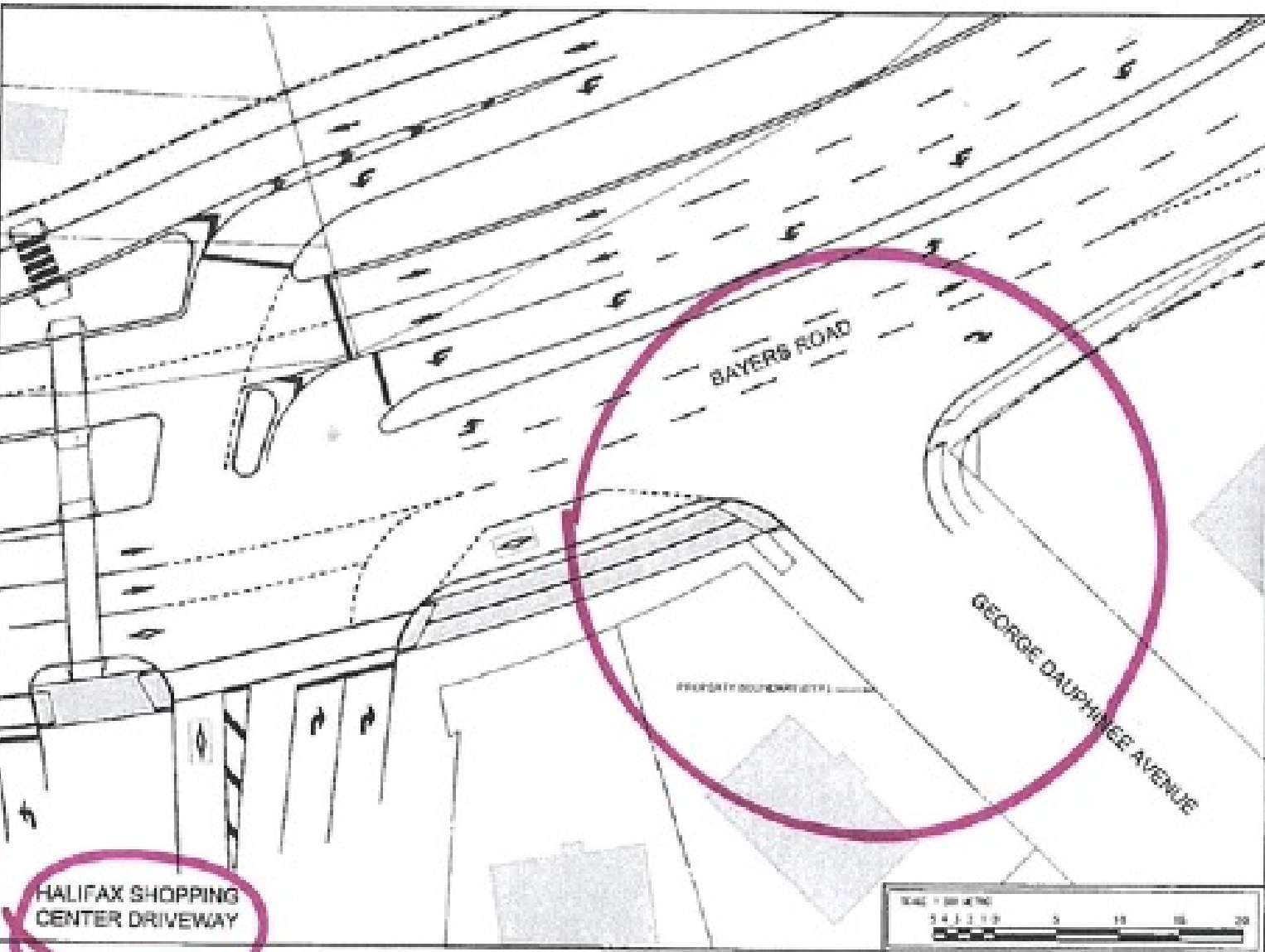
BLEND TO EXIST. ASPHALT

LIMIT OF PROP. CURB

LIMIT OF PROP. CURB

LIMIT OF CONSTRUCTION

CIVIC 3100



NOTES
 1. PROPOSED WORKSHOPS SHALL BE TO
 CLARIFY BAYERS ROAD FINAL DESIGN

SHEET 1

Drawn: D. ARBIT
 Reviewed: G. DENNIS/VP JACKERSON
 Project #: 21140071
 Date: DECEMBER 28, 2011

PROJECT
**BAYERS ROAD
 DETAILED DESIGN**

DATE
 BAYERS ROAD AT GEORGE
 DAUPHINEE AVENUE
 CURB LAYOUT
 07/1/2011

CITY
HALIFAX

SCALE: 1:50

WSP
 WSP Canada Inc.
 1 Appleton Lane Drive
 Northwood, Nova Scotia Canada B3B 0P7
 T 902.429.9963 www.wsp.com

ORIGINAL PLAN

Closure of George Dauphinee Avenue as an access

- When the Community became Aware
- Lack of professional attention to safety within Westmount

Westmount Subdivision Features

- Two Sports Fields
 - Two Schools (one Elementary, One Junior high)
 - One Playground which is unique for accessibility
 - More than 2 kms of paved walking trails
 - Tennis Courts
 - Splash Pool
 - Two regional churches with Community facilities
 - Basketball hoops
-
- All these things need to be accessed through this one functional intersection (Almon and Connaught)

Westmount Subdivision Access







an hurch

William Hunt Ave

Chebucto Rd

Westmount St

Location pin icon
Ideal Property Maintenance

Google

Goal and Support

Letter of Support

Safety within Westmount

Lack of Consultation

Absence of Impact Analysis

Quote from HRM Traffic
Analyst/Traffic Authority

Conclusions and Call for Action