

GENERAL NOTES/SPECIFICATIONS

1. ALL ELEVATIONS GIVEN AND NOTED ARE IN METERS.
2. ALL DIMENSIONS GIVEN ARE IN METERS UNLESS OTHERWISE NOTED. PIPE DIAMETERS ARE GIVEN IN MILLIMETRES.
3. EXISTING UNDERGROUND PIPING SHOWN IS APPROXIMATE ONLY. EXACT LOCATION TO BE DETERMINED IN THE FIELD BY THE CONTRACTOR. CONFIRM LOCATION OF WATER, SANITARY AND STORM LINES ON PLYMOUSE STREET THRU HALIFAX WATER.
4. EXISTING INFORMATION FOR THIS DESIGN WAS OBTAINED FROM RECORD DRAWINGS PROVIDED BY OTHERS. CONTRACTOR SHALL CONFIRM EXISTING SERVICE INFORMATION BEFORE CONSTRUCTION PROCESSES.
5. ENVIRONMENTAL PROTECTION MEASURES TO BE IN ACCORDANCE WITH REQUIREMENTS OF USE AND CONSTRUCTION PERMITS. EROSION CONTROL MEASURES SHALL BE INSTALLED PRIOR TO ENVIRONMENTAL AND STORM WATER CONTROL MEASURES IN THE CONTRACT PRICE.
6. OBTAIN NECESSARY PERMITS FROM THE HALIFAX REGIONAL MUNICIPALITY AND HALIFAX WATER FROM TO INITIATING WORK.
7. UNLESS OTHERWISE NOTED HORIZONTAL ALL DISTURBED AND CONSTRUCTED SLOPES ALL SLOPES STEEPER THAN 3H:1V TO BE STABILIZED WITH RIP RAP 300mm THK.
8. UNLESS OTHERWISE NOTED SENSITIVE EXISTING FEATURES EQUAL OR BETTER THAN CONDITIONS WHICH EXISTED PRIOR TO CONSTRUCTION. IN VEGETATED AREAS REINSTATE WITH 100mm OF TOPSOIL AND SOD.
9. PLACE SURPLUS FILL MATERIALS OFF SITE.
10. PROVIDE TEMPORARY SUPPORT FOR UTILITY POLES TO SATISFACTION OF NRM AND BELL ALIANT.
11. CONDUCT WORK IN ACCORDANCE WITH OCCUPATIONAL, HEALTH AND SAFETY REGULATIONS AND GUIDELINES.
12. HORIZONTAL GEOMETRY, ELEVATIONS AND PROPERTY INFORMATION PROVIDED BY OTHERS.
13. CONDOUR ELEVATIONS AND SPOT ELEVATIONS ARE INTERPOLATED AND ARE APPROXIMATE ONLY. TOPS AND TOES OF SLOPES SHOWN ON THE DRAWINGS ARE APPROXIMATE AND SHALL BE CONSTRUCTED TO SUIT THE ACTUAL GROUND ELEVATIONS AND SPECIFIED SIDE SLOPES.
14. PROVIDE CURB OPENINGS FOR DRIVEWAYS AS FOLLOWS:
SINGLE - N/A
DOUBLE - N/A
15. FOR TRENCH WIDTHS AND PIPE BEDDING REQUIREMENTS SEE DETAIL HWS0 1440.
16. SODDING - 100mm OF TOPSOIL AND NURSERY SOO - SEE LANDSCAPE DRAWING.
17. ASPHALT - SEE LANDSCAPE DRAWING.
18. CONCRETE FOR CURBS AND SIDEWALKS - SEE LANDSCAPE DRAWING.
19. COMPLETE SITE GRADING SUCH THAT NO DRAINAGE IS DIRECTED ONTO PRIVATE PROPERTY OR STREET SURFACES. DRIVEWAY RAMP SHALL SLOPE TOWARDS STREET FROM RIGHT OF WAY.
20. IF REQUIRED, SITE GRADING, FILLING AND FOUNDATIONS SHALL BE AS DIRECTED BY A QUALIFIED PROFESSIONAL.
21. EXISTING ASPHALT CURBING TO BE REPAIRED AND REPLACED AS DIRECTED BY HWM. REPLACE EXISTING CURB AND SIDEWALK IN SERVICE LATERALS TO HWM STANDARD DETAILS.
22. STREET RENOVEMENT TO BE PER SECTION 6.0 OF THE HRM MUNICIPAL DESIGN GUIDELINES.

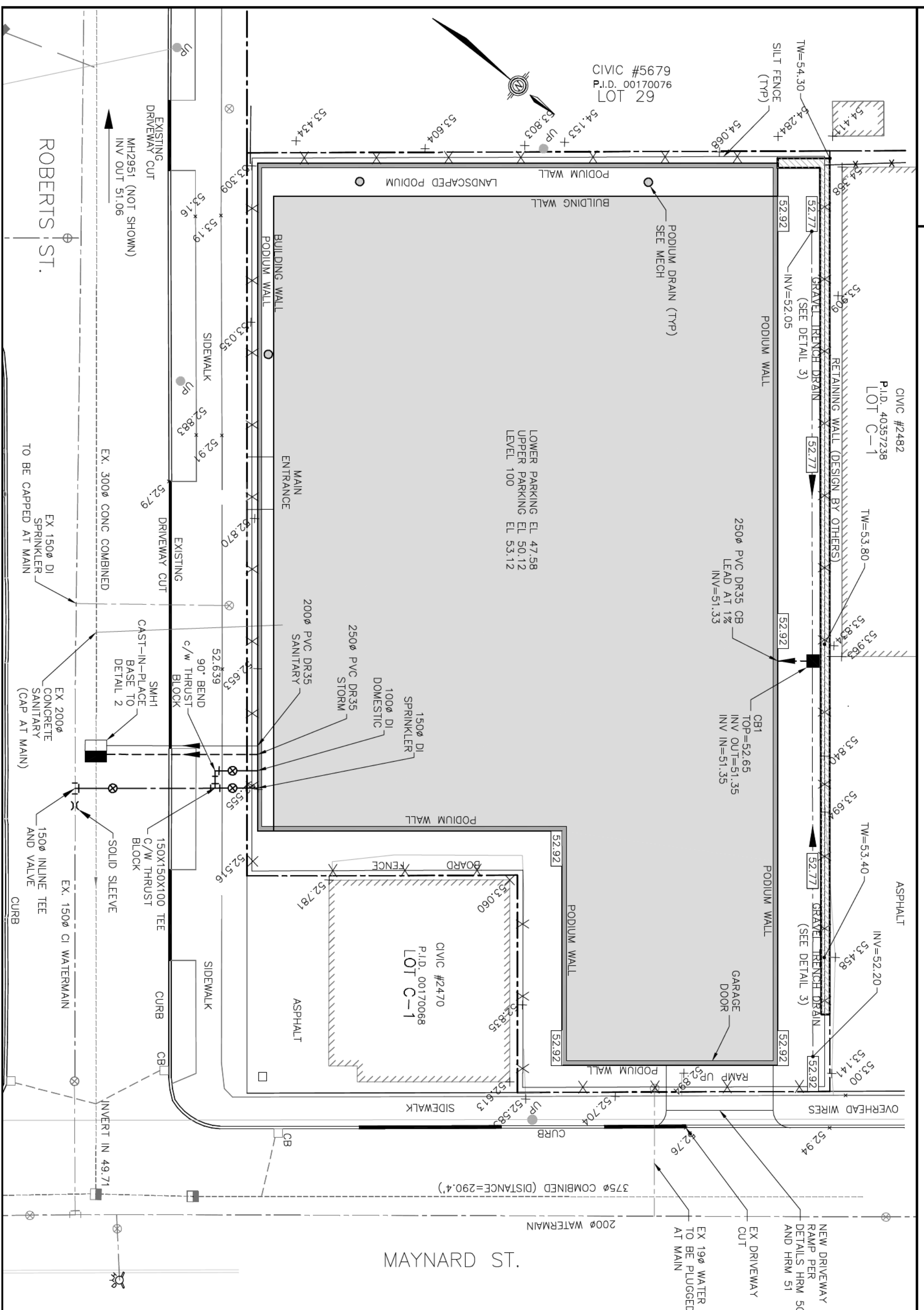
GENERAL - SEWER SPECIFICATIONS:

1. ALL MATERIALS AND INSTALLATION TO BE IN ACCORDANCE WITH THE HALIFAX REGIONAL MUNICIPALITY MUNICIPAL DESIGN GUIDELINES, HALIFAX WATER DESIGN AND CONSTRUCTION SPECIFICATIONS, NRM/RSO STANDARD SPECIFICATIONS FOR MUNICIPAL SERVICES (LATEST EDITIONS), AND THE CONTRACT DOCUMENTS.
2. SINKER LATERALS TO BE IN ACCORDANCE WITH STANDARD HWS0-1510 & HWS0-1560.
3. SINKER LATERALS CONSTRUCTED IN ROCK SHALL HAVE THE ROCK BROKEN 3m PAST THE CARPED END FOR THE FULL TRENCH WIDTH.
4. CATCH BASIN LEADS ARE TO BE MINIMUM 200# PVC DR35 PIPE AT A MINIMUM SLOPE OF 1% CONNECTED TO A MANHOLE OR MAN WITH APPROVED TEE FITTINGS TO CSA B182.1.
5. CATCH BASINS TO BE INSTALLED AS PER STANDARD DETAIL HWS0 1570.
6. FOR TRENCH WIDTHS AND PIPE BEDDING REQUIREMENTS SEE DETAIL HWS0 1440.
7. STORM SEWER - PVC DR35 PIPE AND FITTINGS TO CSA B182.1 (UNLESS OTHERWISE NOTED)
8. SANITARY SEWER - 200# OR GREATER - PVC DR35 PIPE AND FITTINGS TO CSA B182.1 (UNLESS OTHERWISE NOTED)
9. WHERE POSSIBLE ALL UNDERGROUND PIPING TO HAVE A MINIMUM 1800mm OF COVER TO FINAL GRADE.
10. LATERAL CONNECTIONS SHALL BE FLUSH WITH INSIDE OF MAN.
11. ROOF DRAINS ARE TO BE DISCHARGED TO THE SURFACE AND DIRECTED TO THE REAR OF THE PROPERTY.
12. PROVIDE MINIMUM 1000mm HORIZONTAL SEPARATION BETWEEN WATER SERVICES INSTALLED IN THE SAME TRENCH.
13. ALL BENDS ON SEWER LATERALS TO BE LONG RADIUS.
14. ALL SANITARY MANHOLES, SEWERS AND LATERALS TO BE PRESSURE TESTED. LATERAL TO BE PRESSURE TESTED PRIOR TO CONNECTION TO BUILDING PLUMBING.
15. CONTRACTOR TO PROVIDE CCTV INSPECTION REPORT FOR ALL STORM AND SANITARY SEWERS AND LATERALS.

GENERAL - WATER SPECIFICATIONS

1. ALL WATERMAIN MATERIALS AND INSTALLATION TO BE IN ACCORDANCE WITH THE HALIFAX WATER DESIGN AND CONSTRUCTION SPECIFICATIONS (LATEST EDITION).
2. DO NOT INSTALL CURB STOPS OR VALVES IN DRIVEWAY OPENINGS.
3. THE VALVES ARE TO CLOSE COUNTER-CLOCKWISE AS INDICATED ON HWS 1066.
4. CATCH BASIN LEADS ARE TO BE INSTALLED UNDER THE WATERMAIN.
5. WHERE WATER LINES CROSS SANITARY OR STORM SEWERS PROVIDE MINIMUM 450mm VERTICAL CLEARANCE BETWEEN PIPES (UNLESS OTHERWISE NOTED).
6. PROVIDE THRUST RESTRAINT AT ALL BENDS, TEES, CAPS, AND HYDRANTS TO HWS0 1070 & 1080.
7. PROVIDE MECHANICAL JOINT RESTRAINTS AT INDICATED LOCATIONS AS PER HWS0 1090.
8. PROVIDE PIPE BEDDING IN ACCORDANCE WITH HWS0 1440.
9. MAINTAIN MINIMUM 1600mm AND MAXIMUM OF 2000mm OF COVER OVER WATER SERVICES UNLESS OTHERWISE NOTED. WHERE WATER LATERAL IS NOT 300mm ABOVE TOP OF SEWER LATERALS, PROVIDE 3 METRE SEPARATION TO SEWER LATERALS.

PLAN
SCALE: 1:200



EROSION AND SEDIMENT MITIGATION

1. THE FOLLOWING MEASURES ARE PROVIDED AS A SUGGESTED APPROACH TO EROSION AND SEDIMENT CONTROL DURING CONSTRUCTION. THE CONTRACTOR SHALL IMPLEMENT THESE MEASURES AS A MINIMUM. THE CONTRACTOR SHALL MAINTAIN THESE MEASURES THROUGHOUT CONSTRUCTION AND THROUGHOUT WATERS DURING CONSTRUCTION AND PRIOR TO FINAL STABILIZATION.
2. INSTALL SILT FENCE AT ALL DOWNSTREAM/DOWN SLOPE, RIGHT-OF-WAYS, DRIVEWAYS, AND TEMPORARY INTERCEPTOR STOPS, AND DIRECT RUNOFF TO STABILIZED AREAS.
3. CONSTRUCT PERMANENT AND TEMPORARY INTERCEPTOR STOPS, AND DIRECT RUNOFF TO STABILIZED AREAS.
4. CONSTRUCT SILT CONTROL AND COLLECTION STRUCTURES AS AND WHERE REQUIRED TO SUIT THE METHODS AND PROGRESS OF THE WORKS.
5. THE CONTRACTOR SHALL BE RESPONSIBLE FOR THE REMEDIAL ACTION TO MITIGATE ANY EROSION OR SLOPE FAILURE DUE TO ACTIONS OF THE CONTRACTOR.
6. ANY SURPLUS TOPSOIL OR EXCAVATION IS TO BE REMOVED FROM THE SITE, AND ANY TEMPORARY STOCKPILES STABILIZE WITH SEED AND STRAW MULCH, PROVIDE SILT FENCE DOWNSLOPE OF ANY STOCK PILES.
7. COMPLETE IT PROMPTLY AND STABILIZE SURFACE BEFORE MOVING TO NEXT AREA.
8. SILT ACCUMULATIONS TO BE REMOVED FROM SILT CONTROL STRUCTURES/MEASURES ON A REGULAR BASIS. SILT TO BE HAND EXCAVATED AND DISPOSED OF OFF-SITE OR STABILIZED IN DISTURBED AREAS.
9. DISTURBED AREAS WHICH MAY REQUIRE REMEDIATION TO BE STABILIZED BY MULCH OR OTHER APPROVED METHODS WITHIN ONE WEEK OF INITIAL DISTURBANCE OR PRIOR TO A FORECASTED SIGNIFICANT RAINFALL EVENT. PLOUGHING OF PERMANENT LANDSCAPING.
10. DEWATERING OF EXCAVATIONS WILL BE DIRECTED THROUGH FILTER BAGS AND/OR GRAVEL AND STRAW BERMS. NO WATER SHALL BE DIRECTED TO THE STORM SEWER SYSTEM PRIOR TO FINAL STABILIZATION.
11. SURFACE WATER DISCHARGES SHALL MEET PROVINCIAL AND FEDERAL REGULATIONS. CONTRACTOR SHALL SAMPLE AND ANALYZE RUNOFF QUALITY DURING RAINFALL AND IN ACCORDANCE WITH TOPSOIL REMOVAL PERMIT.
12. MAINTAIN ALL ENVIRONMENTAL PROTECTION MEASURES FOR A PERIOD OF ONE YEAR AFTER LOT ENDEVELOPMENT, RESIDED AND MULCH AREAS WHERE GROWTH IS NOT PROPERLY MAINTAINED.
13. UNLESS OTHERWISE NOTED, A MINIMUM 6 METRE BUFFER IS TO BE APPLIED TO ALL WATERMAIN AND SEWER LATERALS TO BE MAINTAINED AS AN UNDISTURBED AREA OF NATURAL VEGETATION.
14. ALL WORKS SHALL BE CARRIED OUT IN ACCORDANCE WITH THE NOVA SCOTIA ENVIRONMENTAL CONSTRUCTION SPECIFICATIONS, AND THE EROSION AND SEDIMENT CONTROL HANDBOOK FOR CONSTRUCTION SITES.
15. MUD CONTROL MAT TO BE CONSTRUCTED AT ALL SITE TRUCK ENTRANCES AND SHALL CONSIST OF 300mm THK 150 CLEAR SURGE ROCK 5m Lm LONG, MAINTAIN DRAINAGE CONSTRUCTION TO LIMIT TRACKING OF MUD ONTO STREET.

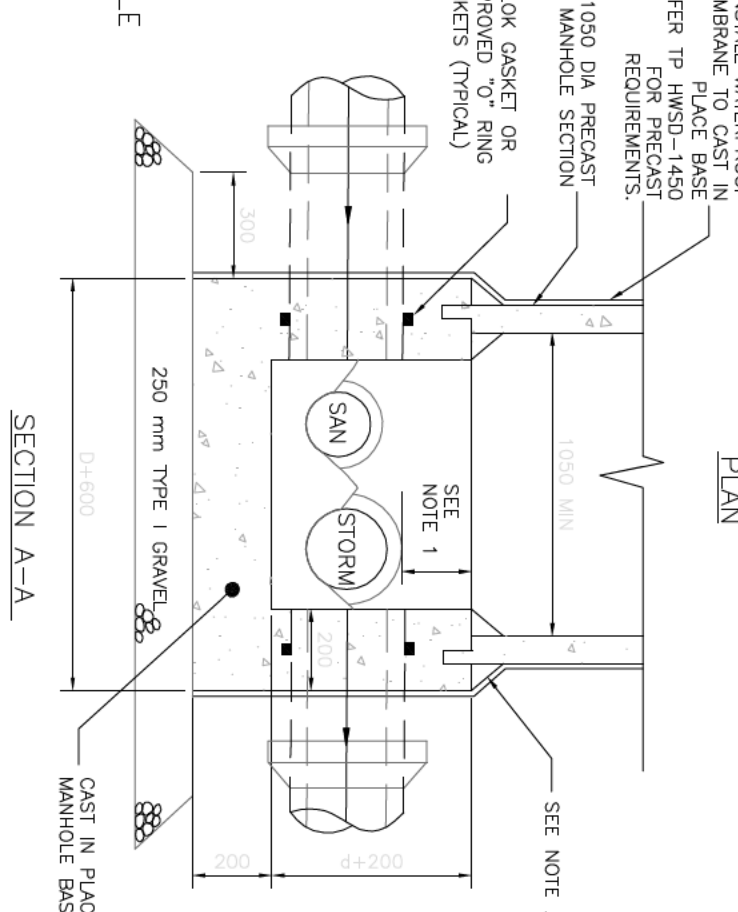
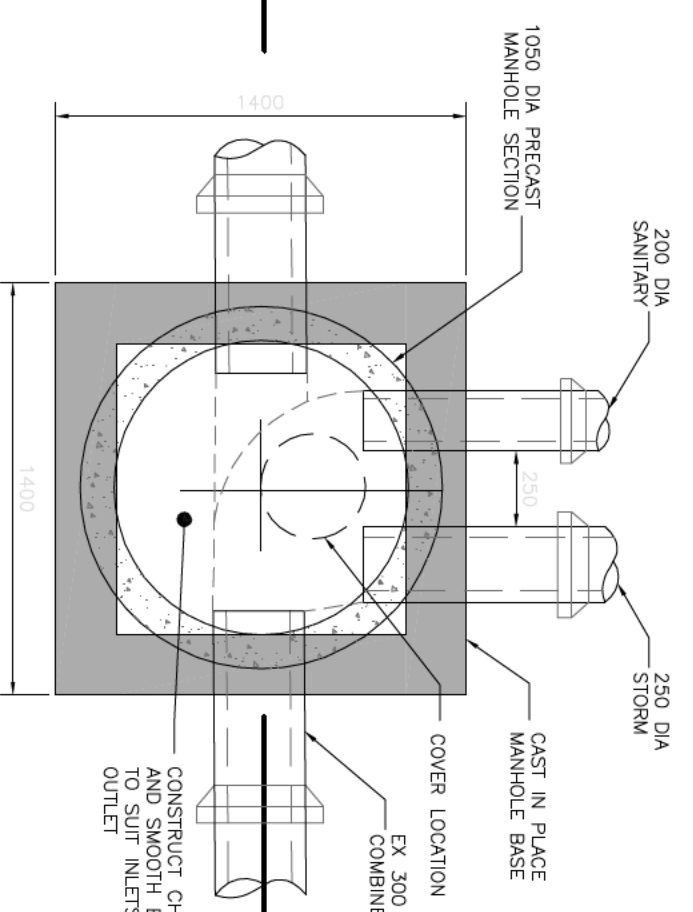
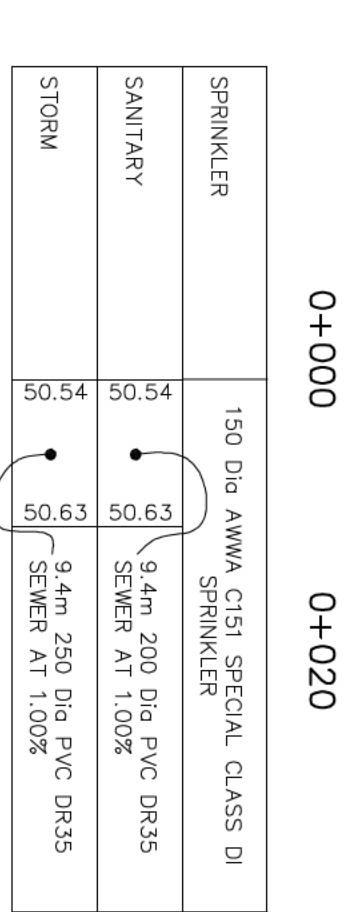
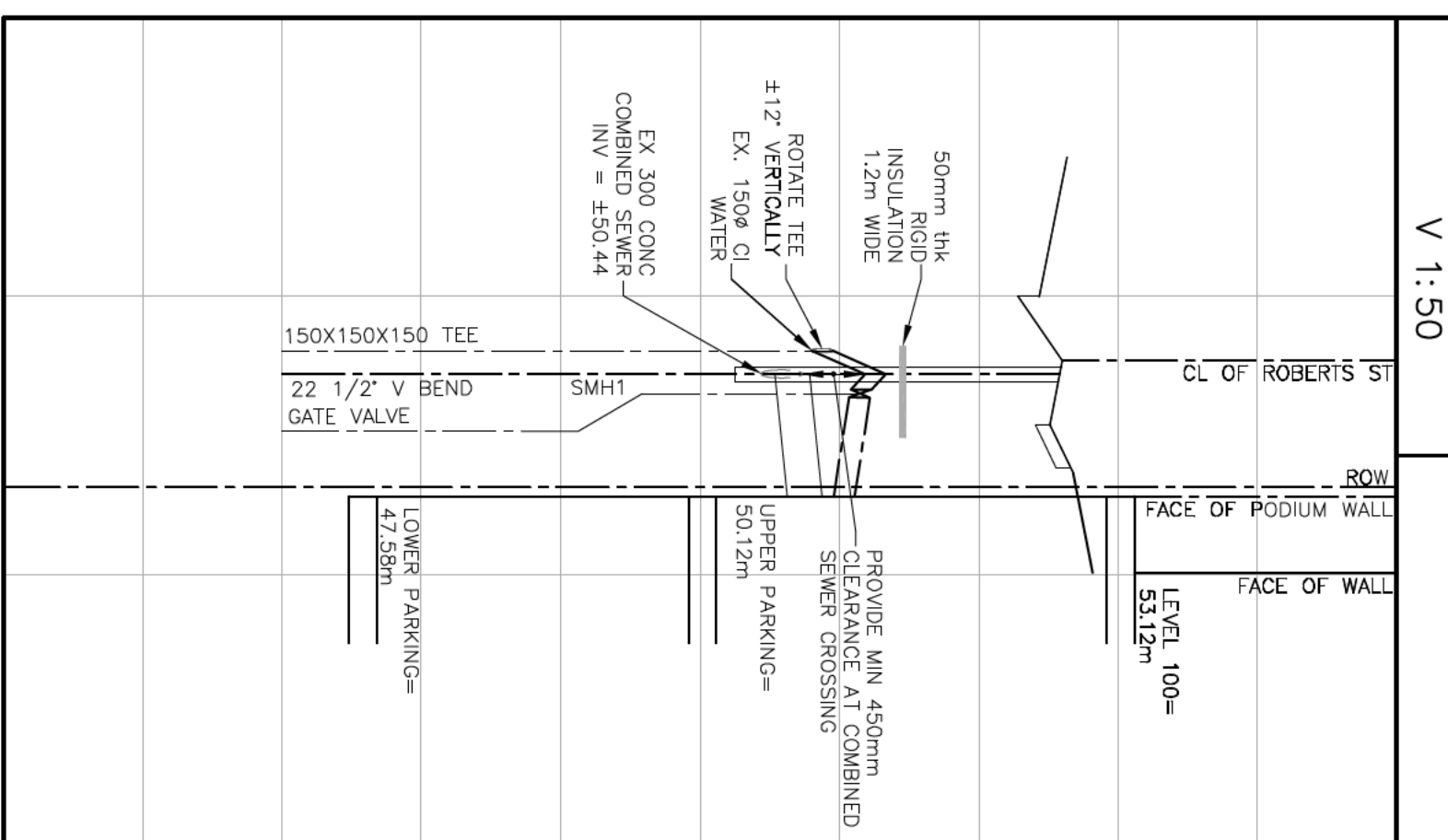
STORMWATER MANAGEMENT

1 = 1.4:2825		1 = 13:2825		1 = 1:100		1 = 1:25	
Runoff Coefficient (C)	Area (ha)	Runoff Coefficient (C)	Area (ha)	Runoff Coefficient (C)	Area (ha)	Runoff Coefficient (C)	Area (ha)
0.80	0.20	0.15	0.80	0.10	0.10	0.10	0.10
0.50	0.20	0.10	0.80	0.10	0.10	0.10	0.10
Total		Total		Total		Total	
0.50	0.20	0.10	0.80	0.10	0.10	0.10	0.10
Total		Total		Total		Total	
0.50	0.20	0.10	0.80	0.10	0.10	0.10	0.10
Total		Total		Total		Total	
0.50	0.20	0.10	0.80	0.10	0.10	0.10	0.10

SURFACE CLASSIFICATION

SURFACE CLASSIFICATION	AREA (m ²)
UNDISTURBED NATURAL	0
BUILDING FOOTPRINT	774
LANDSCAPED	546
GRAVELLED	0
CONCRETE PAVED	235
ASPHALT PAVED	0

PROFILE
SCALE: H 1:500
V 1:50



- NOTES:**
1. MINIMUM OF 100 mm ABOVE LARGEST PIPE.
 2. REEL END OF PRECAST SECTION TO BE FULLY EMBEDDED IN PARTIALLY SET CONCRETE. PROVIDE 100mm CLEARANCE BETWEEN PRECAST SECTION AND EXISTING CONCRETE. PROVIDE 100mm CLEARANCE BETWEEN PRECAST SECTION AND EXISTING CONCRETE. PROVIDE 100mm CLEARANCE BETWEEN PRECAST SECTION AND EXISTING CONCRETE. PROVIDE 100mm CLEARANCE BETWEEN PRECAST SECTION AND EXISTING CONCRETE.
 3. SOFTENED JOINTS SHALL BE VERIFIED BY VISUAL INSPECTION AND TO UNDERSTAND OF ROUNDED GRANULES.

CAST-IN-PLACE BASE FOR

DETAIL - TRENCH DRAIN

Key Plan

Scale: NTS

PLAN LEGEND

EXISTING: DRAINAGE SWALE, DITCH, PROPERTY BOUNDARY, FENCE, STORM SEWER, SANITARY FORCED MAIN, WATER MAIN, STORM MANHOLE, SANITARY MANHOLE, CATCH BASIN, CONCRETE, UTILITY POLE

PROPOSED: DRAINAGE SWALE, DITCH, PROPERTY BOUNDARY, FENCE, STORM SEWER, SANITARY FORCED MAIN, WATER MAIN, STORM MANHOLE, SANITARY MANHOLE, CATCH BASIN, CONCRETE, UTILITY POLE

SPOT ELEVATIONS: XXXX

SURFACE DRAINAGE FLOW DIRECTION: XXXX

LIGHT STAND: EA

EDGE OF ASPHALT: EOA

RIGHT OF WAY: ROW

FACE OF CURB: FOC

TOP OF MALL: TOM

NOTES

1. KVA CONSULTANTS LIMITED RESPONSIBILITY IS LIMITED TO THE WATER SERVICE LATERALS, SANITARY SEWER AND STORM ARCHITECTURAL DRAWINGS FOR LANDSCAPING, RETAINING WALLS, LANDINGS, STAIRS AND RAMP DETAILS.
2. SEE ARCHITECTURAL AND MECHANICAL DRAWINGS FOR PODIUM LANDSCAPING AND DRAINAGE DESIGN.
3. SPRINKLER AND DOMESTIC SERVICES TO BE PER DETAIL HWS0-1220.
4. SH-1 TO BE USED AS SAMPLING MANHOLE.
5. PROVIDE MIN 450mm SEPARATION BETWEEN PIPES WHERE SPRINKLER CROSSES COMBINED SEWER.
6. UNISEL EXISTING DRIVEWAY RAMPS TO BE RENOVATED TO HWM DESIGN GUIDELINES C/W FULL HEIGHT CURB AND GUTTER.
7. SEE ARCHITECTURAL FOR FLOOR AND TOP OF PODIUM WALL ELEVATIONS.

15 06 NOV 20 FLOOR ELEVATIONS / GRADING A/A

14 19 OCT 20 STORMWATER CALCULATIONS & FLOOR ELEV A/A

13 16 SEP 20 FLOOR ELEVATIONS/GRADING A/A

12 13 JUL 20 BUILDING DESIGN A/A

11 17 SEP 19 FLOOR ELEVATIONS A/A

10 18 APR 19 FLOOR ELEV, GRADING & WATER ENTRANCE A/A

9 25 MAR 19 D/W/RAMP RENOVATION/DETAIL & MH DETAIL A/A

CPJ CONSTRUCTION
MANAGEMENT LTD.

KVM Consultants Ltd.

51 Connaught Road, Lew Scottville, NS
Phone: (902)84-2587 Fax: (902)84-3822
E-mail: kva@kvmconsultants.com

2480 MAYNARD STREET
HALIFAX, NOVA SCOTIA

SITE SERVICING

Date: Nov 1, 2017
Scale: AS SHOWN
Reference: Approved
Surveyed: ASL

Drawn: STAFF
Engineer: AT/A
Project No: 615
File Name: 615-501.dwg