

**EXTERIOR MATERIALS LEGEND**

1	MAINTAIN EXISTING HERITAGE CLADDING
2	ALUMINUM CURTAIN WALL
3	EXTERIOR WINDOW UNIT
4	BALCONY/STAIR GUARDRAIL
5	PROVIDE NON-COMBUSTIBLE CLADDING IF REQUIRED
6	ASPHALT SHINGLES
7	MASONRY UNIT



ELEVATION - SOUTH  
(COLLEGE STREET)

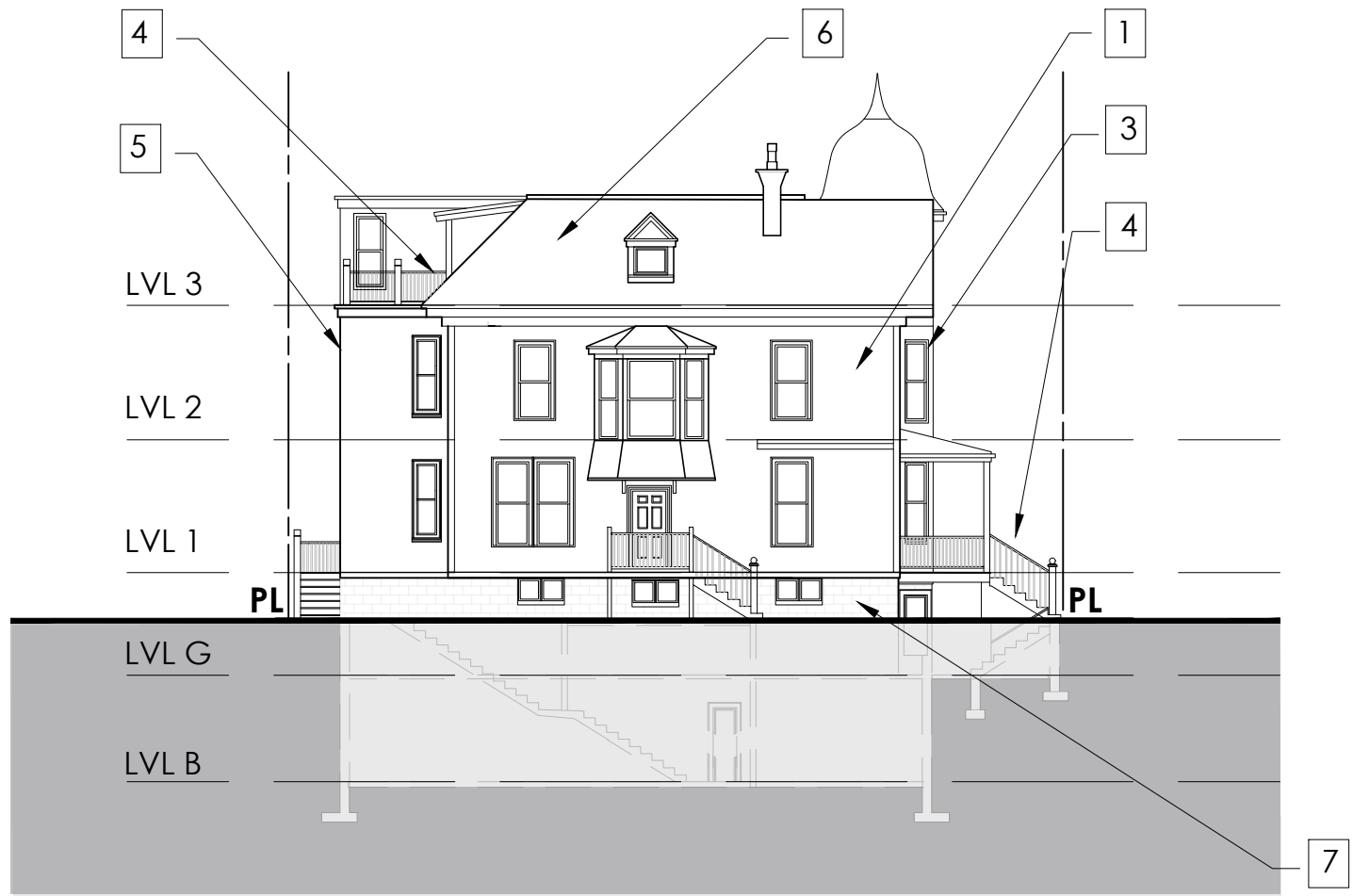


ELEVATION - NORTH



Item 7.1.1

EXTERIOR MATERIALS LEGEND	
1	MAINTAIN EXISTING HERITAGE CLADDING
2	ALUMINUM CURTAIN WALL
3	EXTERIOR WINDOW UNIT
4	BALCONY/STAIR GUARDRAIL
5	PROVIDE NON-COMBUSTIBLE CLADDING IF REQUIRED
6	ASPHALT SHINGLES
7	MASONRY UNIT

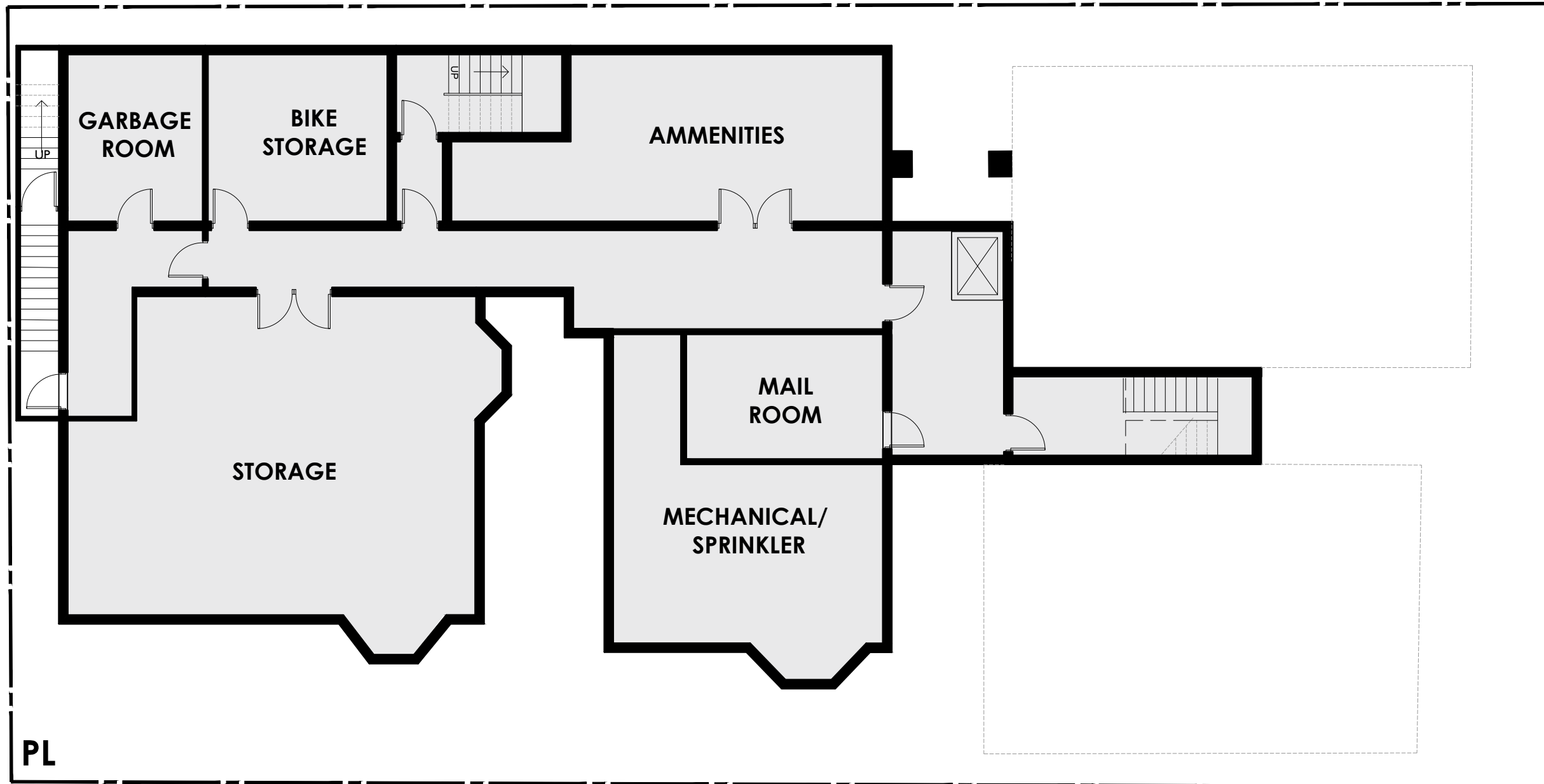


ELEVATION - WEST



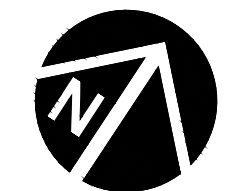
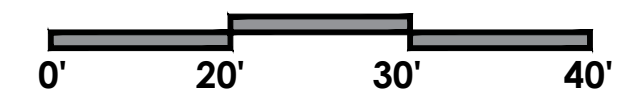
ELEVATION - EAST  
(CARLTON STREET)



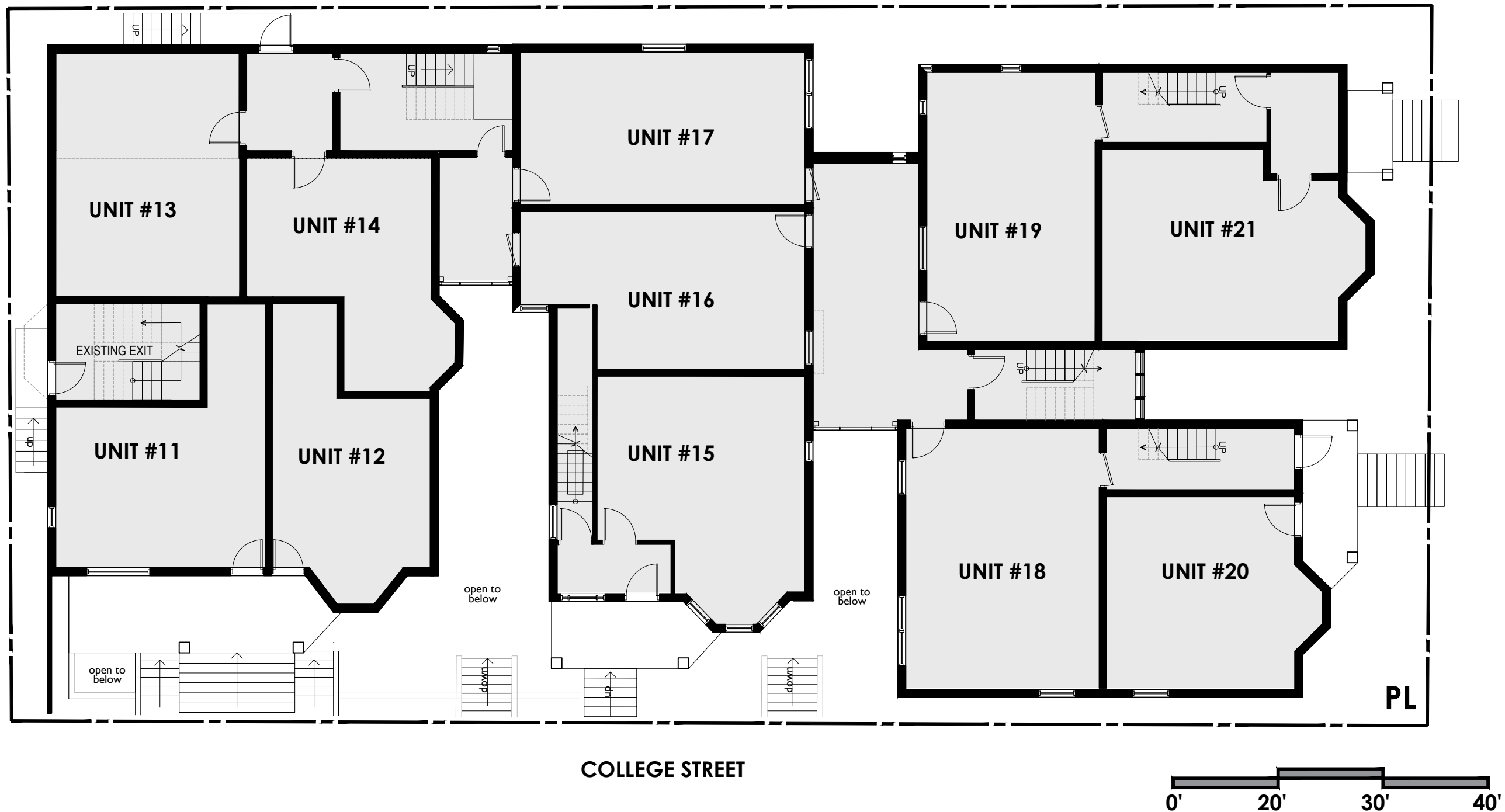


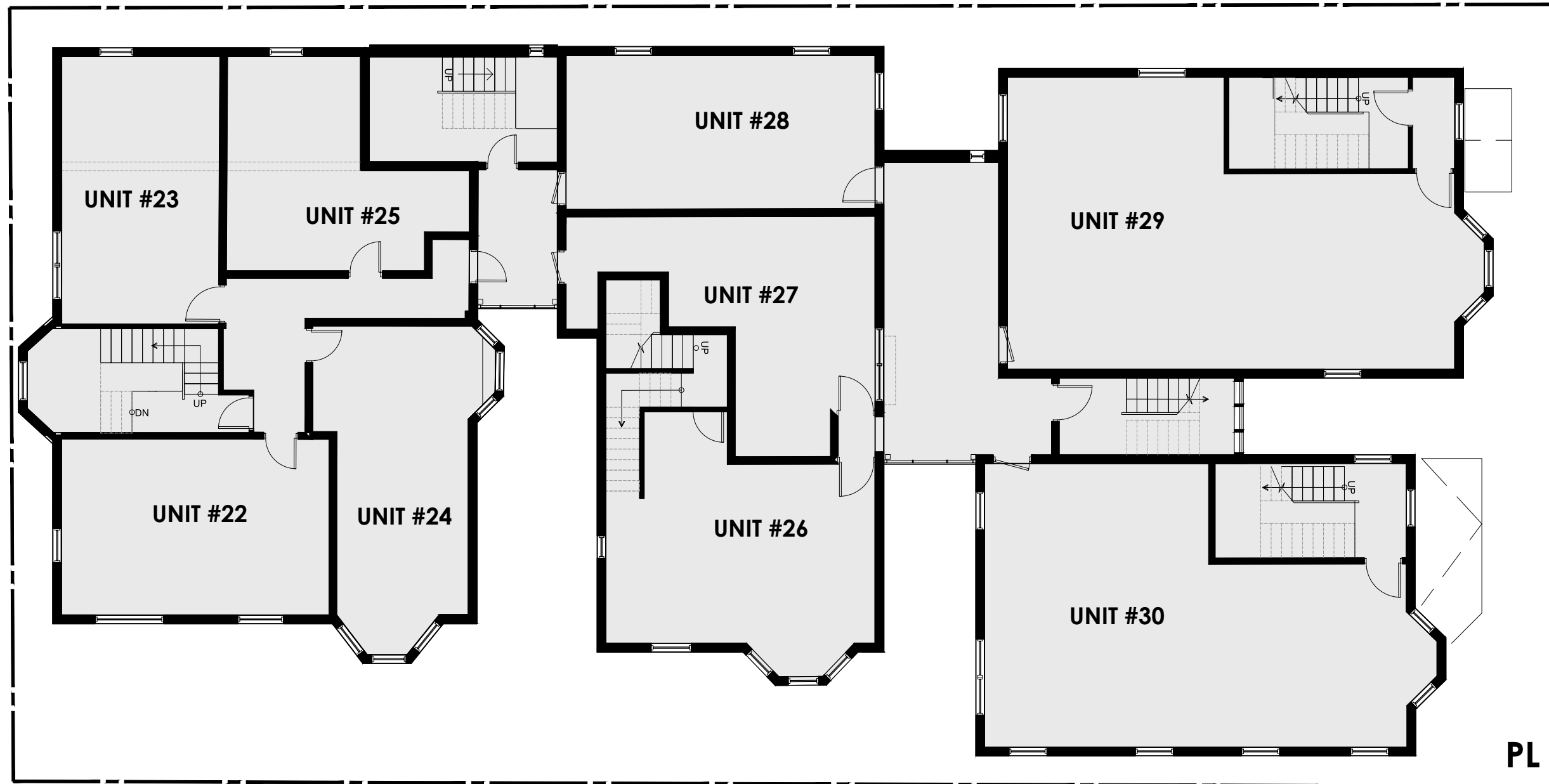
CARLETON STREET

COLLEGE STREET



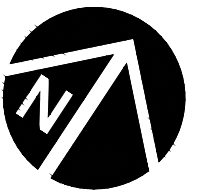


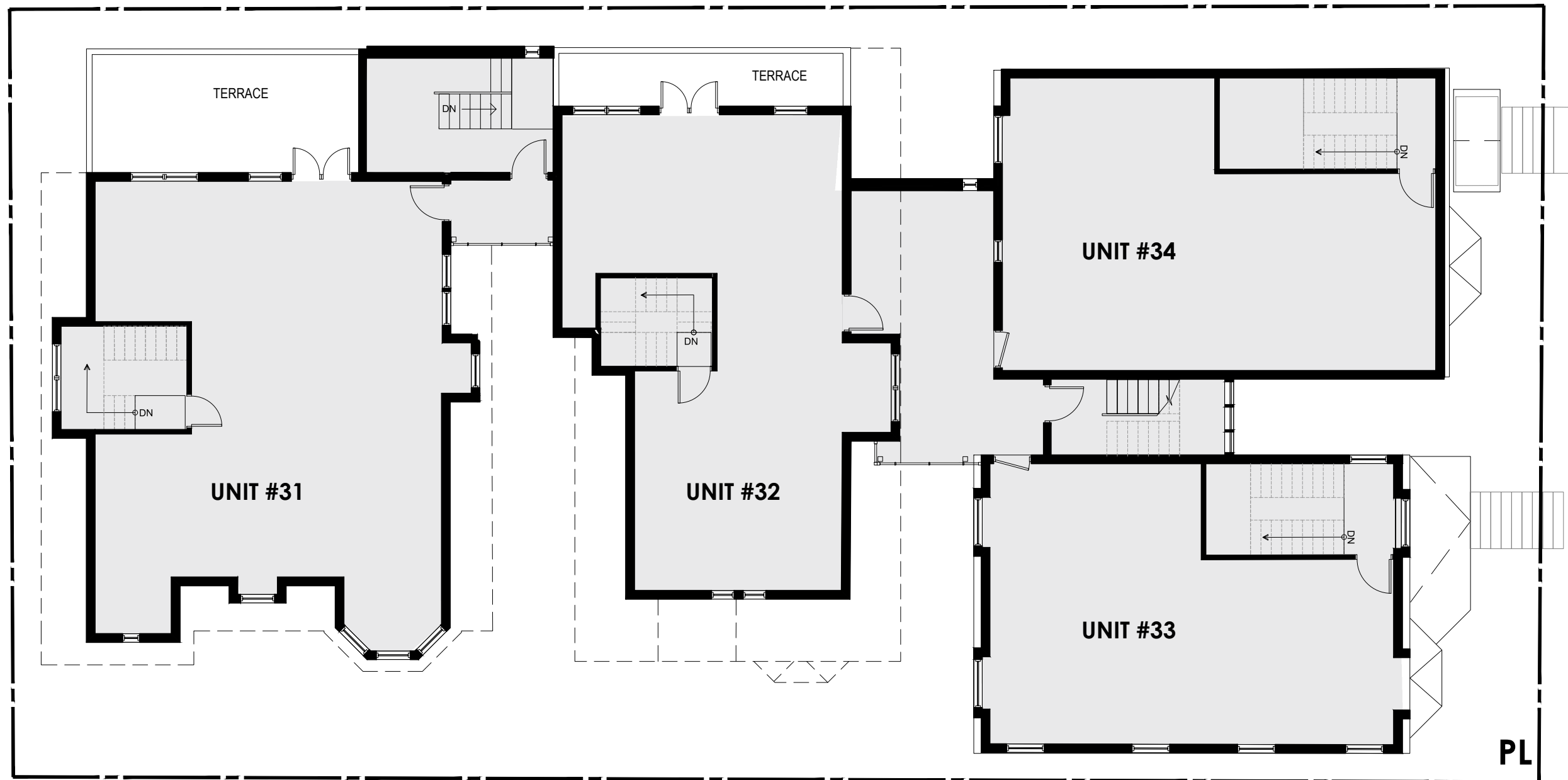




CARLETON STREET

COLLEGE STREET

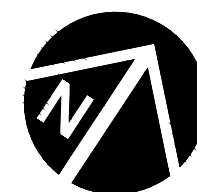
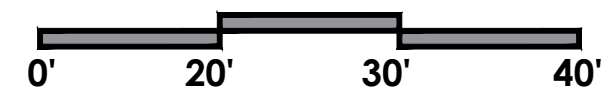




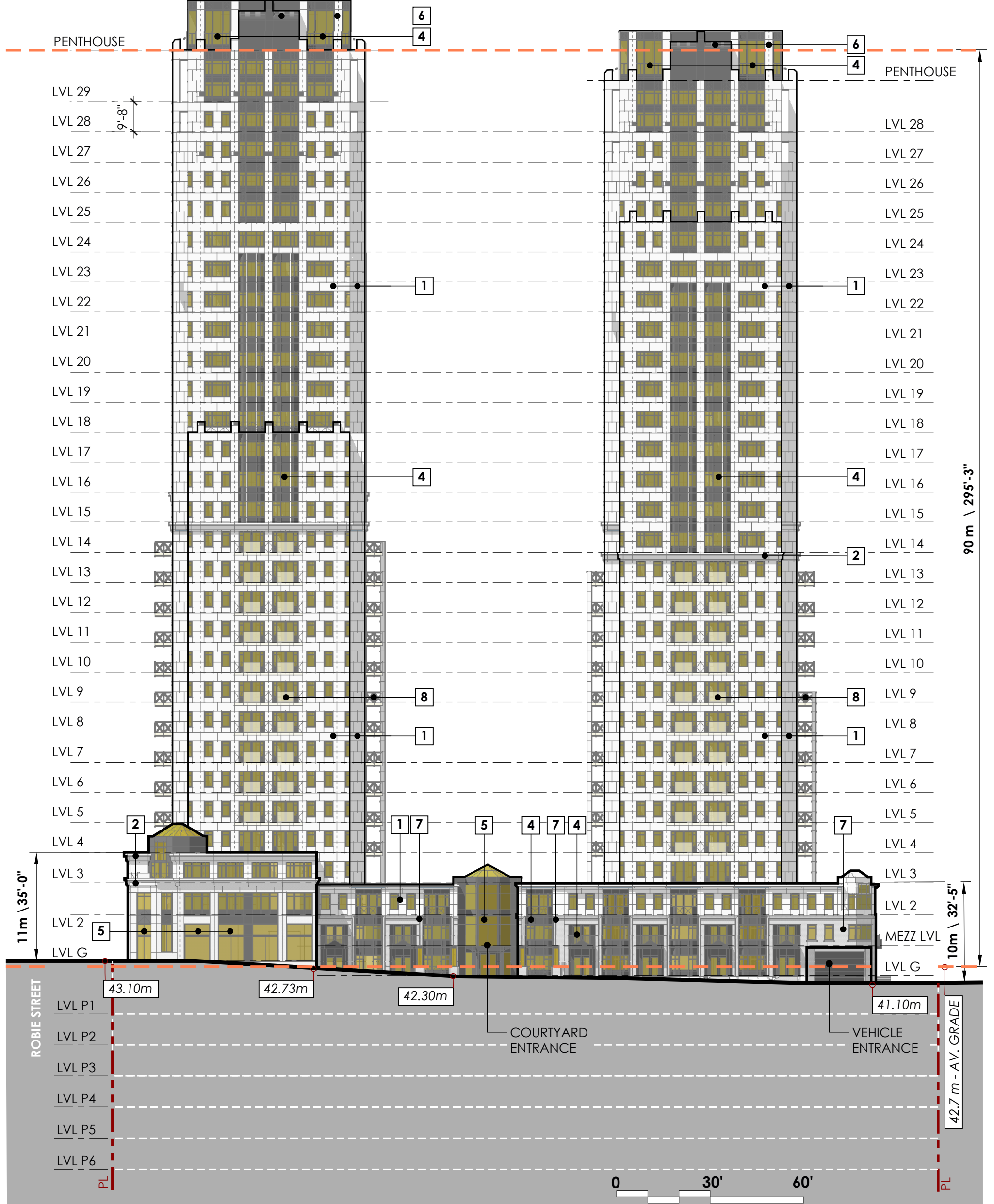
CARLETON STREET

COLLEGE STREET

PL

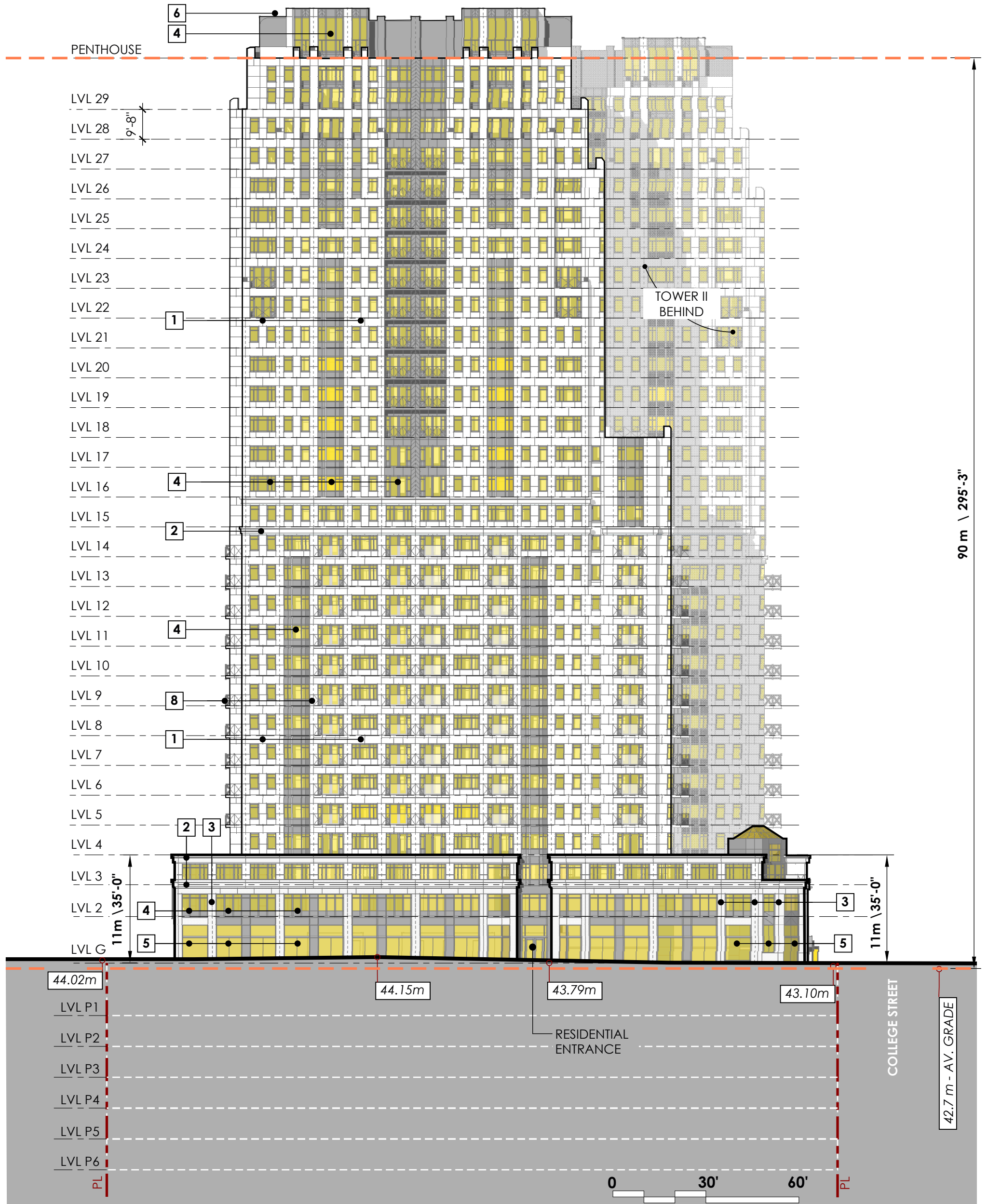


EXTERIOR MATERIALS LEGEND	
1	PRECAST CONCRETE PANEL
2	PRECAST CORNICE
3	PRECAST PILASTER
4	ALUMINUM CURTAIN WALL
5	HIGH TRANSPARENCY STOREFRONT GLASS
6	ALUMINUM COMPOSITE PANEL
7	MASONRY VENEER
8	ALUMINUM FRAMED GLASS GUARD

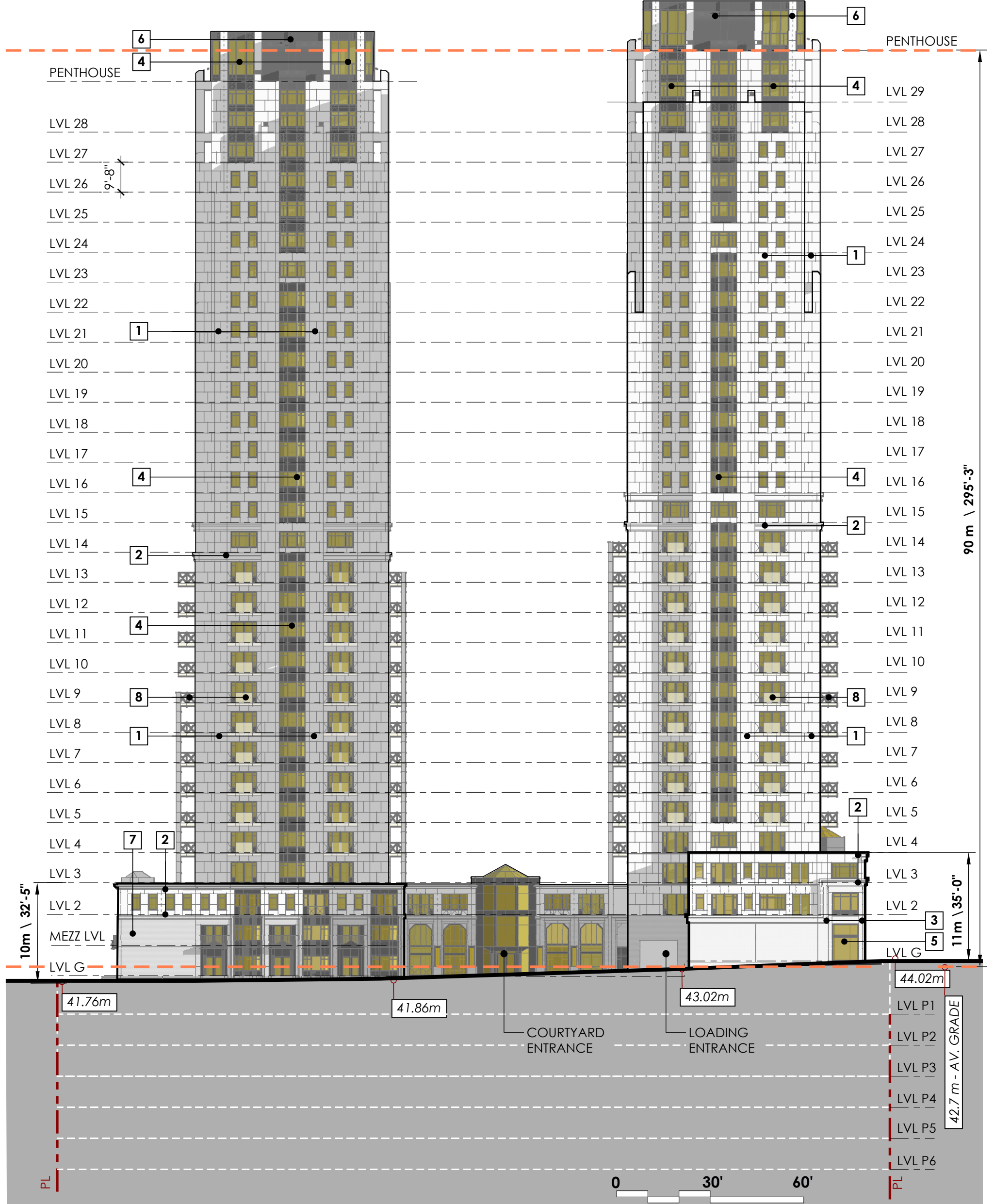




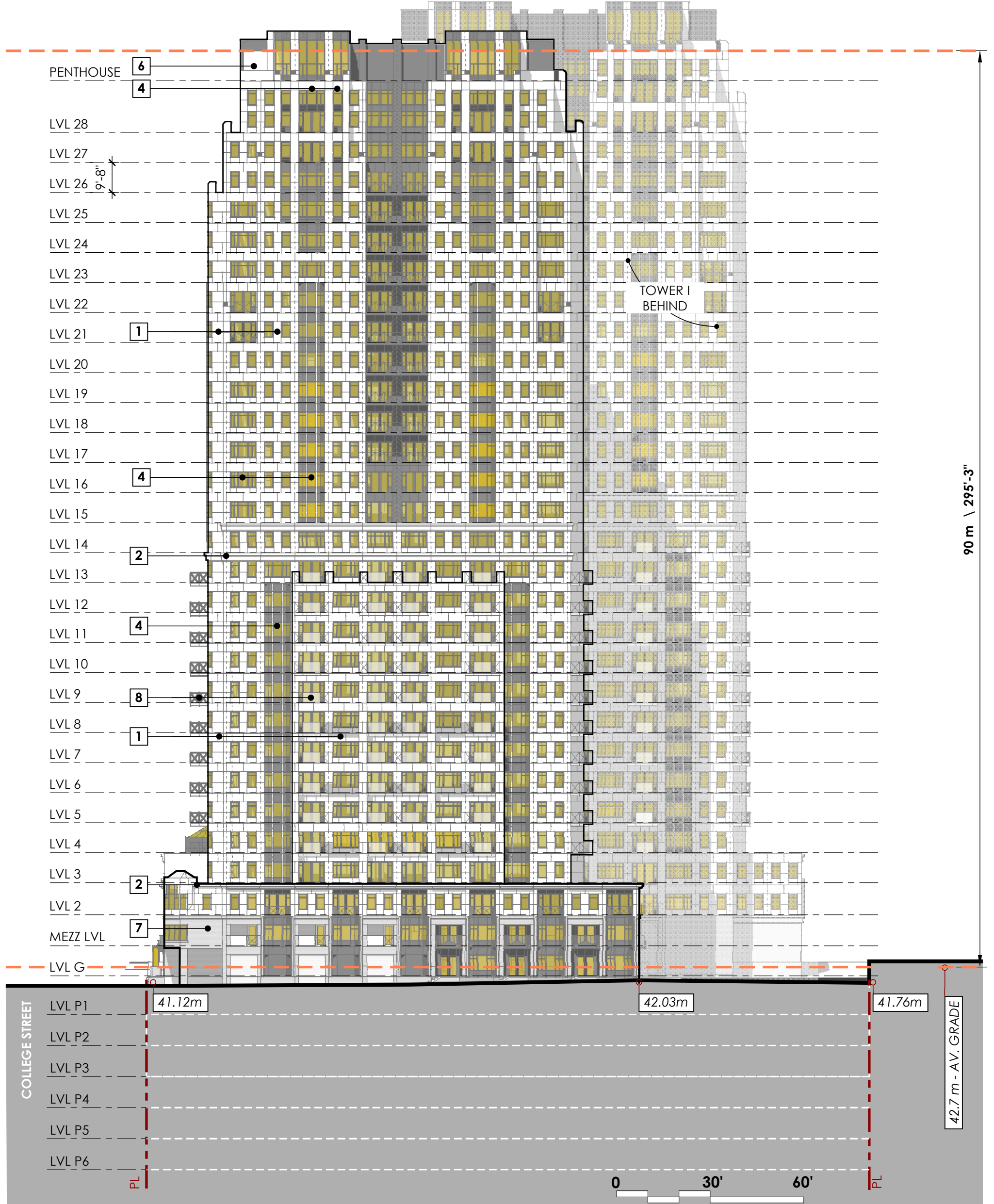
EXTERIOR MATERIALS LEGEND	
1	PRECAST CONCRETE PANEL
2	PRECAST CORNICE
3	PRECAST PILASTER
4	ALUMINUM CURTAIN WALL
5	HIGH TRANSPARENCY STOREFRONT GLASS
6	ALUMINUM COMPOSITE PANEL
7	MASONRY VENEER
8	ALUMINUM FRAMED GLASS GUARD



EXTERIOR MATERIALS LEGEND	
1	PRECAST CONCRETE PANEL
2	PRECAST CORNICE
3	PRECAST PILASTER
4	ALUMINUM CURTAIN WALL
5	HIGH TRANSPARENCY STOREFRONT GLASS
6	ALUMINUM COMPOSITE PANEL
7	MASONRY VENEER
8	ALUMINUM FRAMED GLASS GUARD



EXTERIOR MATERIALS LEGEND	
1	PRECAST CONCRETE PANEL
2	PRECAST CORNICE
3	PRECAST PILASTER
4	ALUMINUM CURTAIN WALL
5	HIGH TRANSPARENCY STOREFRONT GLASS
6	ALUMINUM COMPOSITE PANEL
7	MASONRY VENEER
8	ALUMINUM FRAMED GLASS GUARD

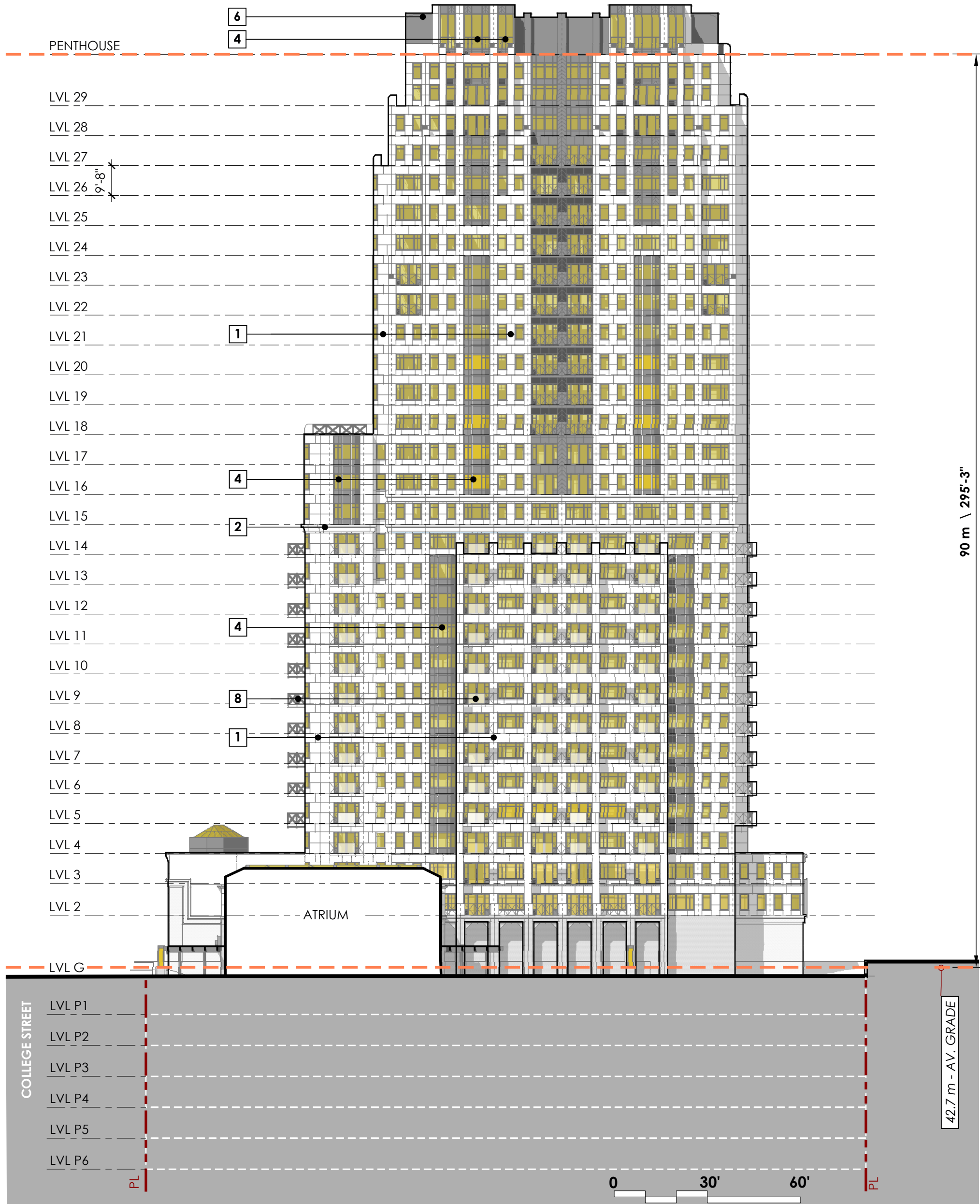


COLLEGE STREET

42.7 m - AV. GRADE

0 30' 60'

EXTERIOR MATERIALS LEGEND	
1	PRECAST CONCRETE PANEL
2	PRECAST CORNICE
3	PRECAST PILASTER
4	ALUMINUM CURTAIN WALL
5	HIGH TRANSPARENCY STOREFRONT GLASS
6	ALUMINUM COMPOSITE PANEL
7	MASONRY VENEER
8	ALUMINUM FRAMED GLASS GUARD



Zwicker  
Zareski  
architecture +  
planning

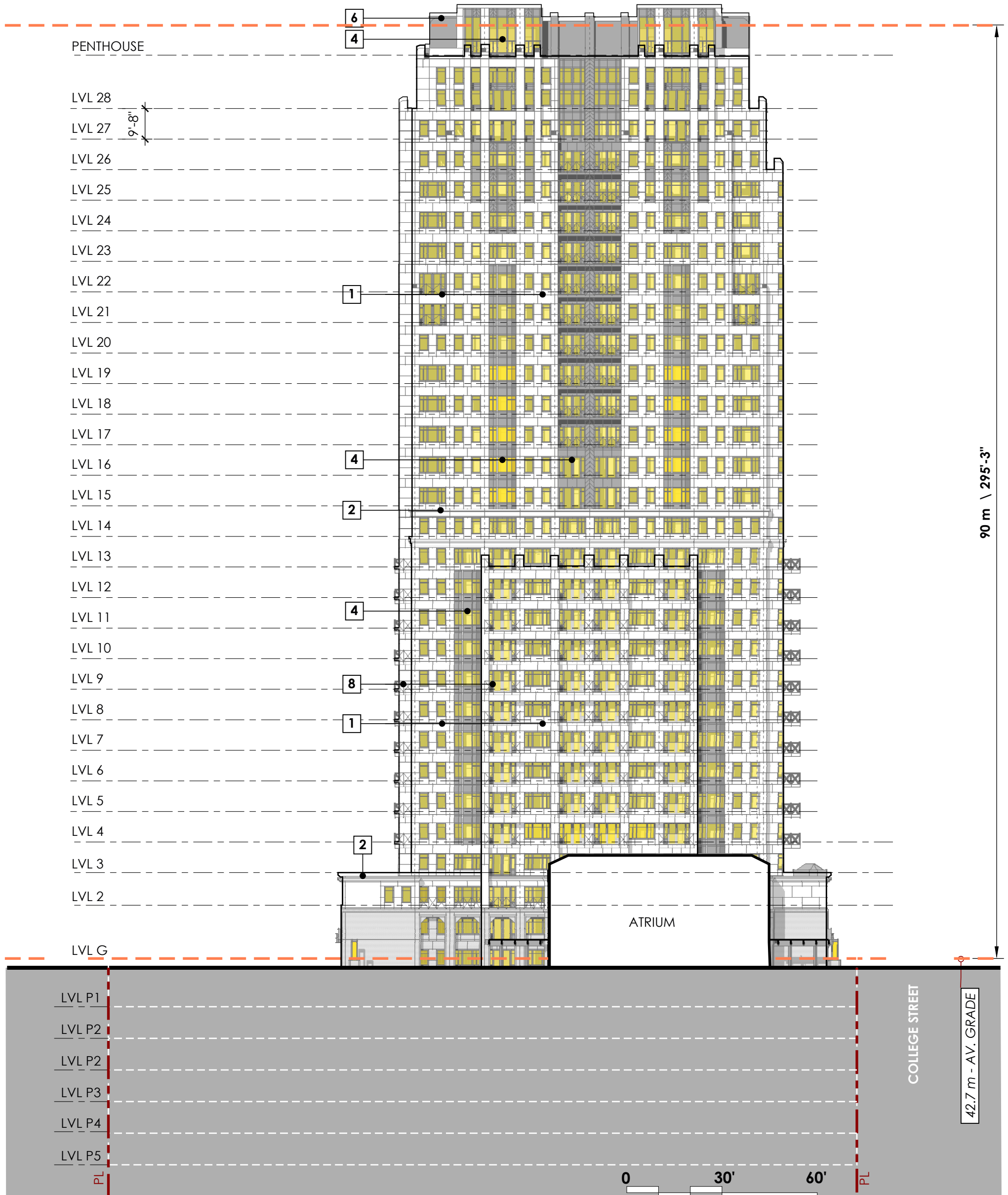
The Promenade  
Halifax, NS

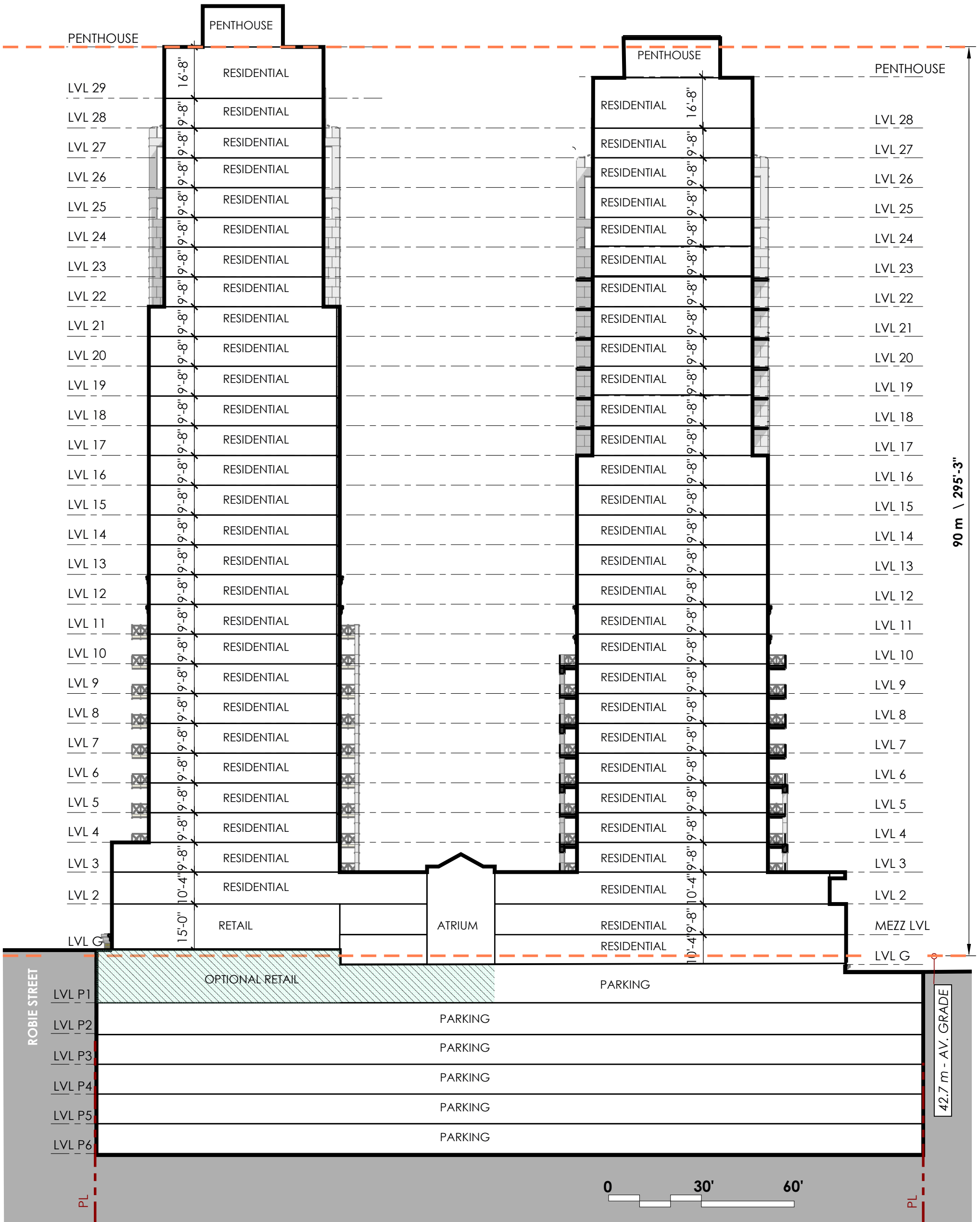
PHASE 2 NE ELEVATION TOWER I  
SCALE: 1"=30'

A06

ISSUED FOR REVIEW  
DATE: May 11, 2020

EXTERIOR MATERIALS LEGEND	
1	PRECAST CONCRETE PANEL
2	PRECAST CORNICE
3	PRECAST PILASTER
4	ALUMINUM CURTAIN WALL
5	HIGH TRANSPARENCY STOREFRONT GLASS
6	ALUMINUM COMPOSITE PANEL
7	MASONRY VENEER
8	ALUMINUM FRAMED GLASS GUARD





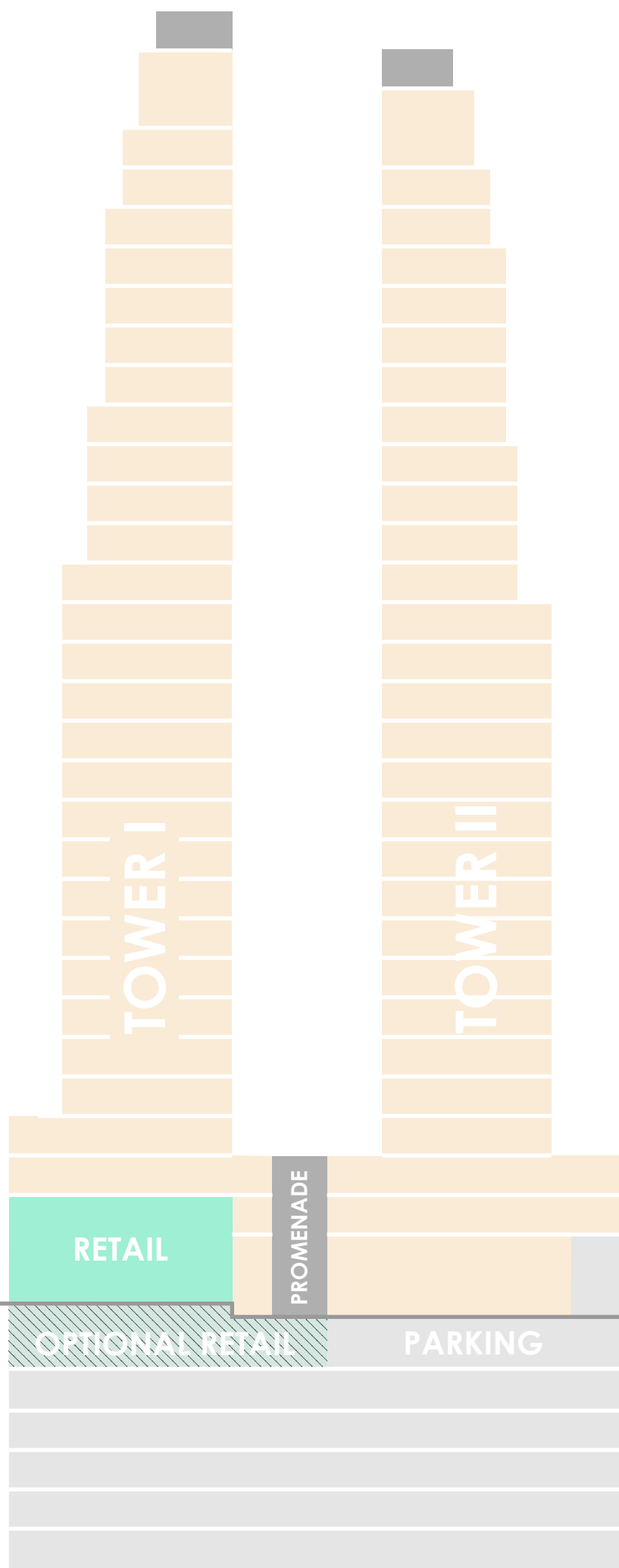
Zwicker  
Zareski  
architecture +  
planning

**The Promenade**  
Halifax, NS

**PHASE 2 BUILDING SECTION**  
SCALE: 1"=30'

**A08**

ISSUED FOR REVIEW  
DATE: May 11, 2020

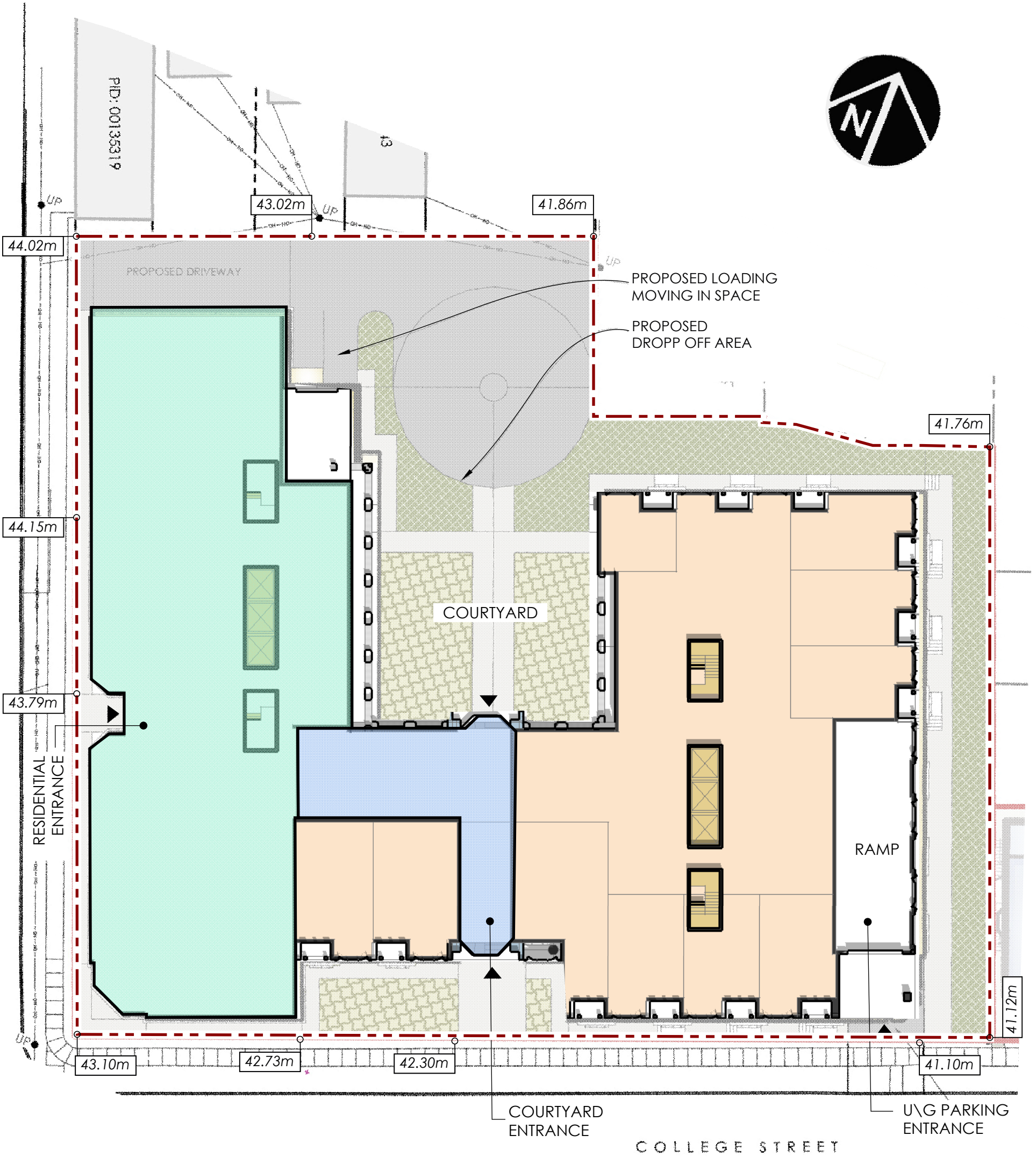


FLOOR	TOWER I			TOWER II		
	GFA	RENTABLE	UNIT #	GFA	RENTABLE	UNIT #
PENTHOUSE	1,500	1,275				
LOFT	1,000	5,038	4	1,500	1,275	
LVL 29	4,750			1,000		
LVL 28	5,460	4,641	4	4,750	5,038	4
LVL 27	5,460	4,641	9	5,460	4,641	4
LVL 26	6,330	5,381	9	5,460	4,641	9
LVL 25	6,330	5,381	9	6,330	5,381	9
LVL 24	6,330	5,381	9	6,330	5,381	9
LVL 23	6,330	5,381	9	6,330	5,381	9
LVL 22	6,330	5,381	9	6,330	5,381	9
LVL 21	6,460	5,491	9	6,330	5,381	9
LVL 20	6,460	5,491	9	6,460	5,491	9
LVL 19	6,460	5,491	9	6,460	5,491	9
LVL 18	6,460	5,491	9	6,460	5,491	9
LVL 17	7,960	6,766	12	6,460	5,491	9
LVL 16	7,960	6,766	12	6,630	5,636	10
LVL 15	7,960	6,766	12	6,630	5,636	10
LVL 14	7,960	6,766	12	6,630	5,636	10
LVL 13	7,960	6,766	12	6,630	5,636	10
LVL 12	7,960	6,766	12	6,630	5,636	10
LVL 11	7,960	6,766	12	6,630	5,636	10
LVL 10	7,960	6,766	12	6,630	5,636	10
LVL 9	7,960	6,766	12	6,630	5,636	10
LVL 8	7,960	6,766	12	6,630	5,636	10
LVL 7	7,960	6,766	12	6,630	5,636	10
LVL 6	7,960	6,766	12	6,630	5,636	10
LVL 5	7,960	6,766	12	6,630	5,636	10
LVL 4	7,960	6,766	12	6,630	5,636	10
LVL 3	13,350	11,348	14	6,630	5,636	10
LVL 2	15,880	13,498	17	14,178	12,051	13
LVL G	12,347	10,495		15,030	12,776	13
				14,050	11,943	16
	<b>214,520</b>	<b>192,987</b>	<b>297</b>	<b>210,220</b>	<b>178,837</b>	<b>280</b>
LVL P1	48,700	21 SPACES	INCLUDING - 30,500 SF RETAIL			
LVL P2	48,700	98 SPACES				
LVL P3	48,700	98 SPACES				
LVL P4	48,700	98 SPACES				
LVL P5	48,700	98 SPACES				
LVL P6	48,700	98 SPACES				

**TOTALS**

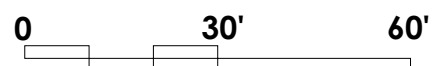
	GFA ABOVE GROUND \ SF	RENTABLE 85%	UNIT #	PARKING
RESIDENTIAL	424,740 SF	359,329 SF		
RETAIL	12,347 SF	10,495 SF		
PROMENADE \ PENTHOUSE		4,355 SF		
<b>TOTAL</b>	<b>442,210 SF</b>	<b>374,179 SF</b>	<b>577</b>	<b>511</b>
<b>MAX FAR</b>	<b>8</b>			
<b>LOT AREA</b>	<b>55,353 SF</b>			
<b>MAX ALLOWABLE GFA</b>	<b>442,824 SF</b>			

ROBIE STREET



**LEGEND**

- Residential
- Retail
- Atrium
- Core
- Site Boundary
- Building Access Point
- 41.76m Grade Elevation



Zwicker  
Zareski  
architecture +  
planning

1 Canal Street, Dartmouth, NS B2Y 2W1 | Zzap.ca

# The Promenade

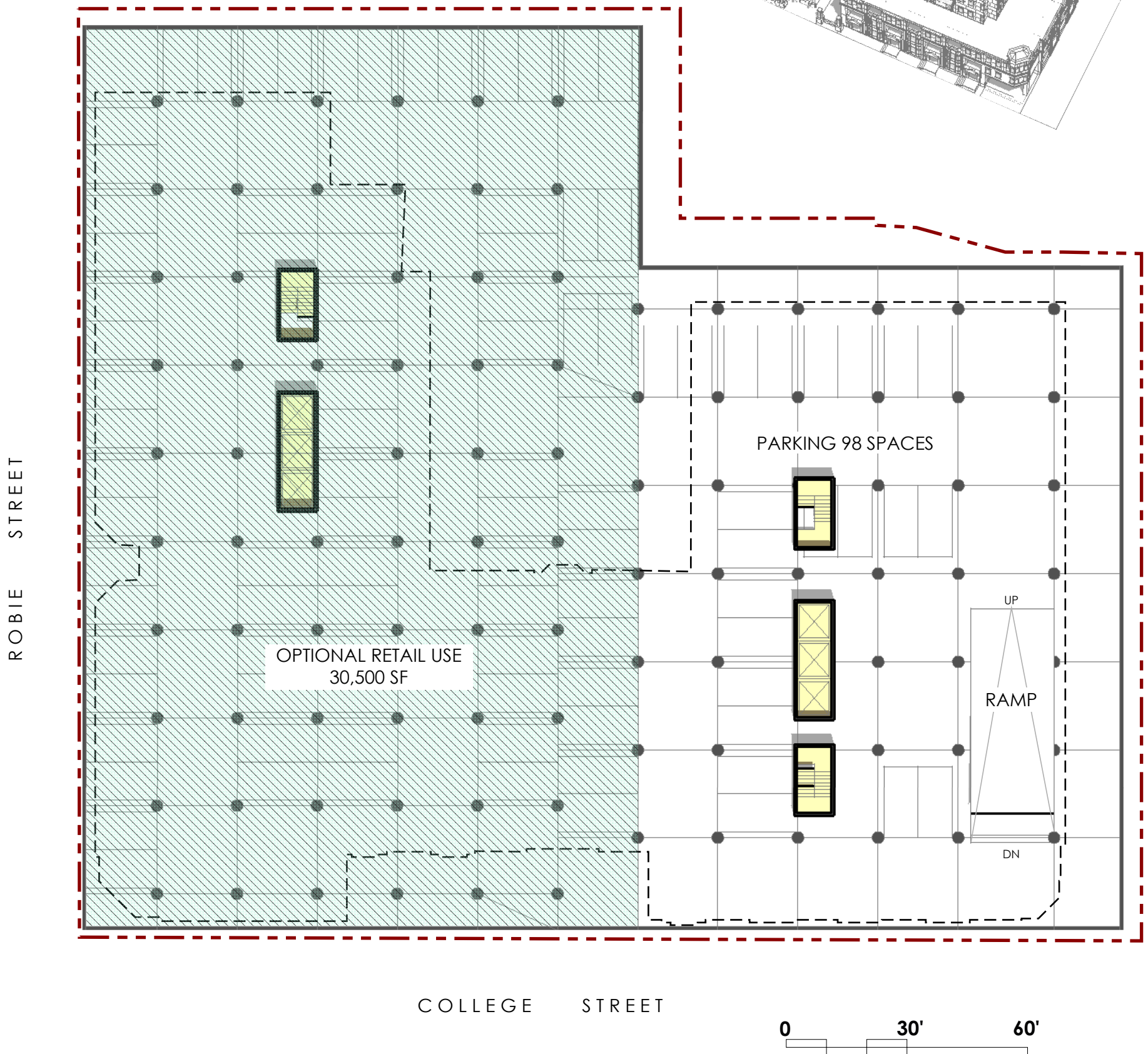
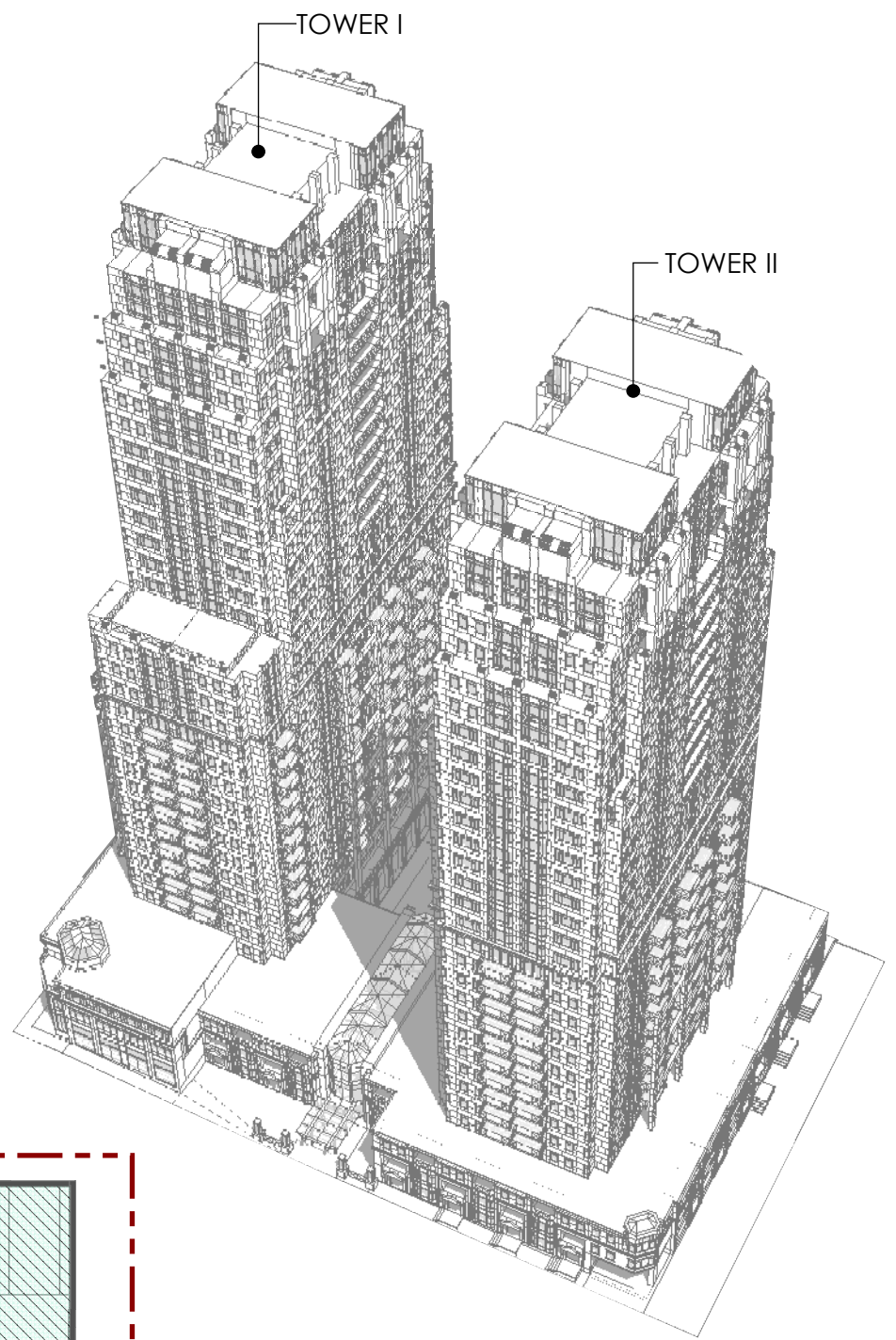
Halifax, NS

## PHASE 2 FLOOR LAYOUT LVL G

# A10

ISSUED FOR REVIEW  
DATE: May 11, 2020





Zwicker  
Zareski  
architecture +  
planning

1 Canal Street, Dartmouth, NS B2Y 2W1 | ZZap.ca

# The Promenade

Halifax, NS

## PHASE 2 FLOOR LAYOUT LVL P1

# A11

ISSUED FOR REVIEW  
DATE: May 11, 2020



Zwicker  
Zareski  
architecture +  
planning

1 Canal Street, Dartmouth, NS B2Y 2W1 | Zzap.ca

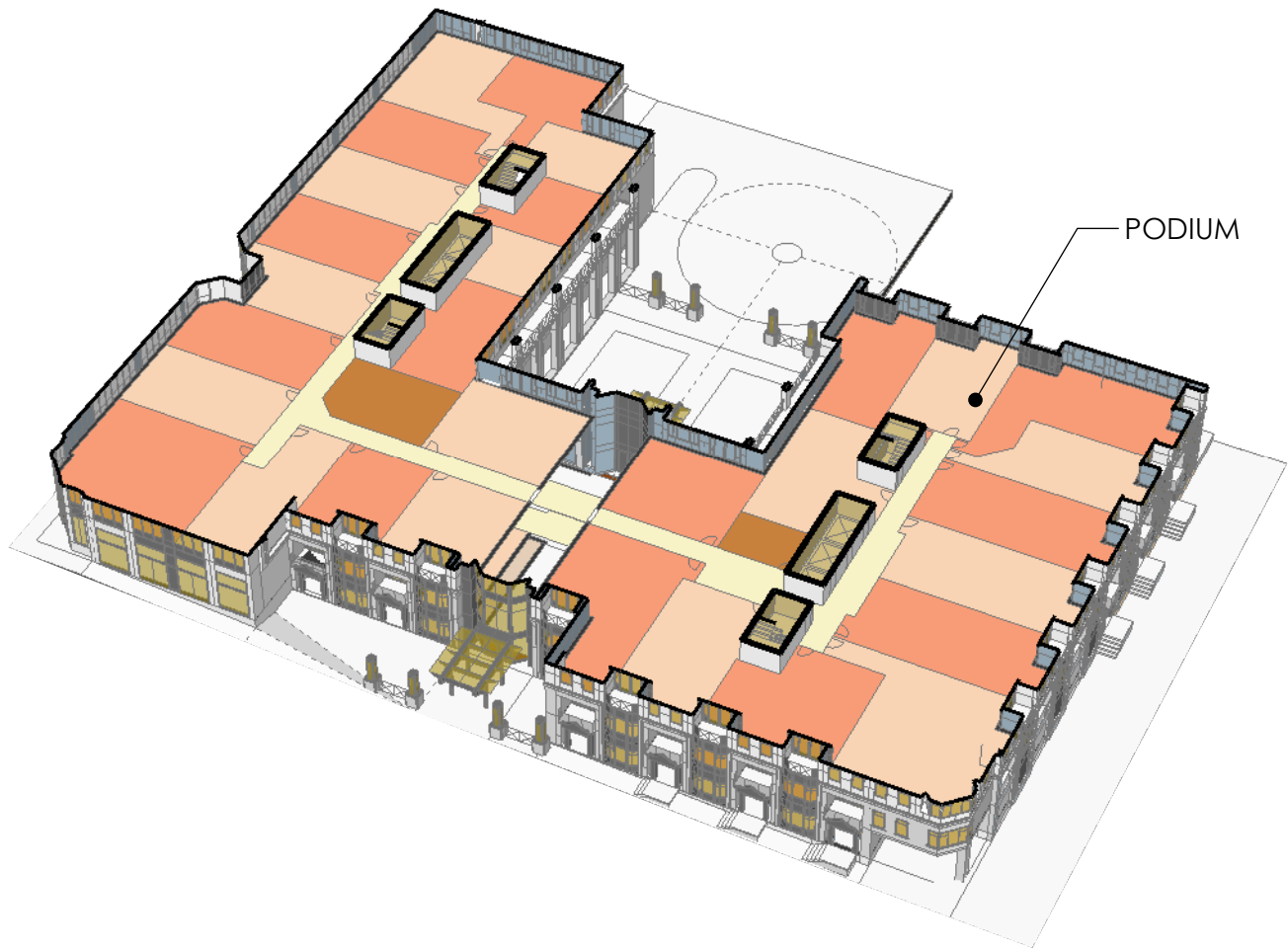
# The Promenade

Halifax, NS

PHASE 2 FLOOR LVL MEZZ

# A12

ISSUED FOR REVIEW  
DATE: May 11, 2020



Zwicker  
Zareski  
architecture +  
planning

1 Canal Street, Dartmouth, NS B2Y 2W1 | Zzap.ca

# The Promenade

Halifax, NS

## PHASE 2 FLOOR LAYOUT LVL 2

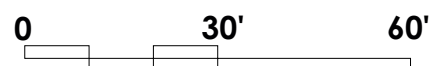
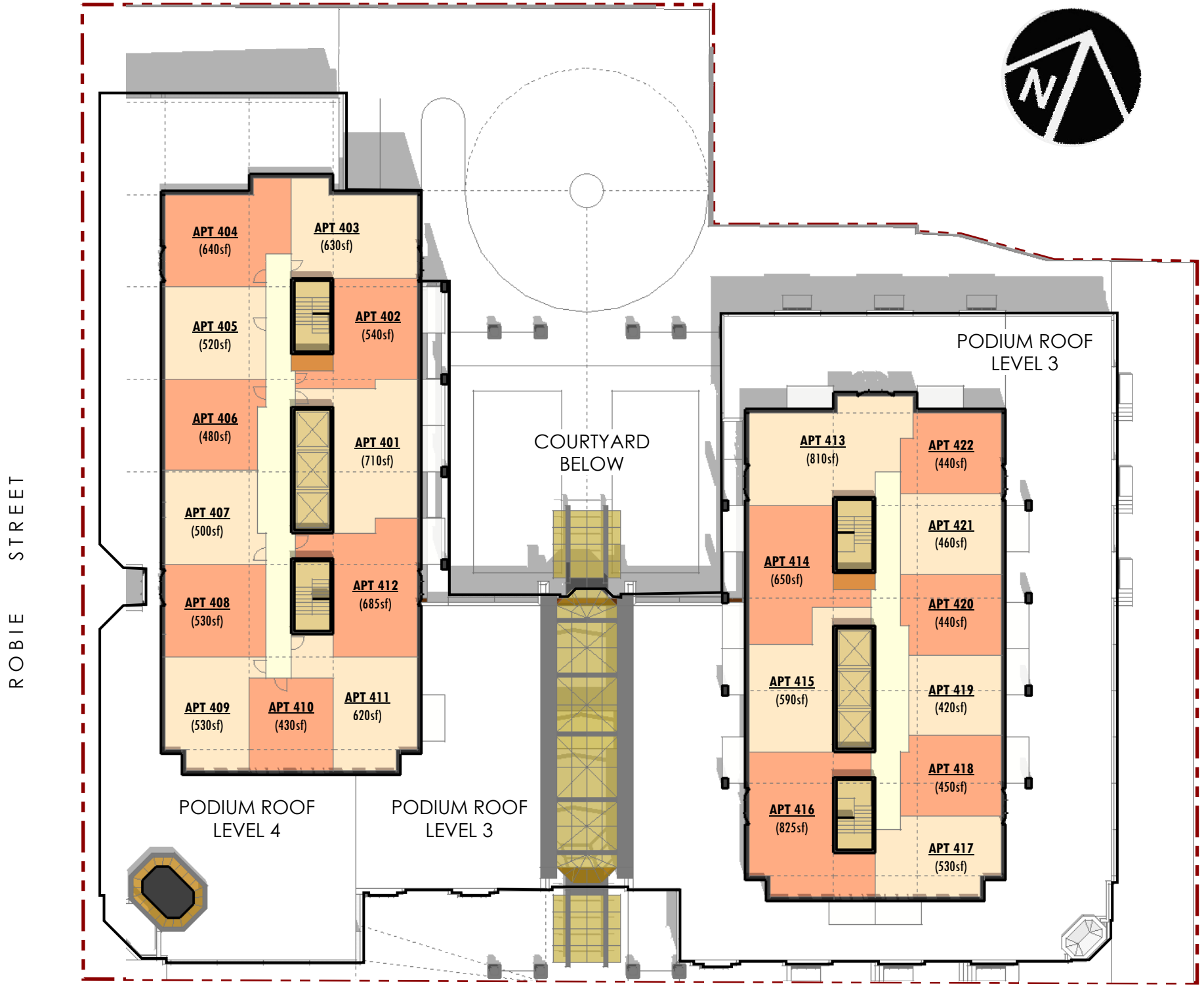
# A13

ISSUED FOR REVIEW  
DATE: May 11, 2020



TOWER I

TOWER II



Zwicker  
Zareski  
architecture +  
planning

1 Canal Street, Dartmouth, NS B2Y 2W1 | Zzap.ca

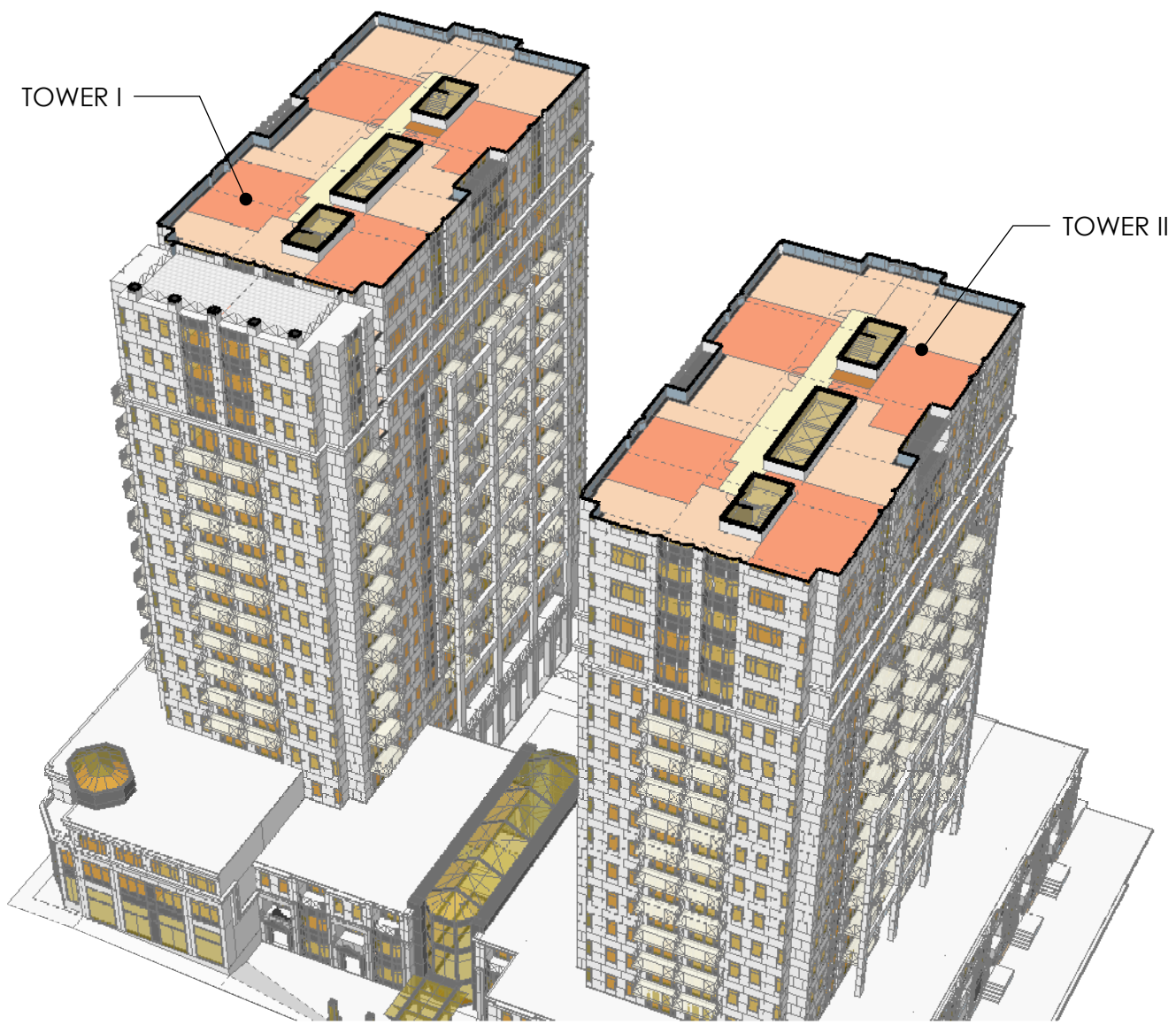
# The Promenade

Halifax, NS

## PHASE 2 FLOOR LAYOUT LVL 4

# A14

ISSUED FOR REVIEW  
DATE: May 11, 2020



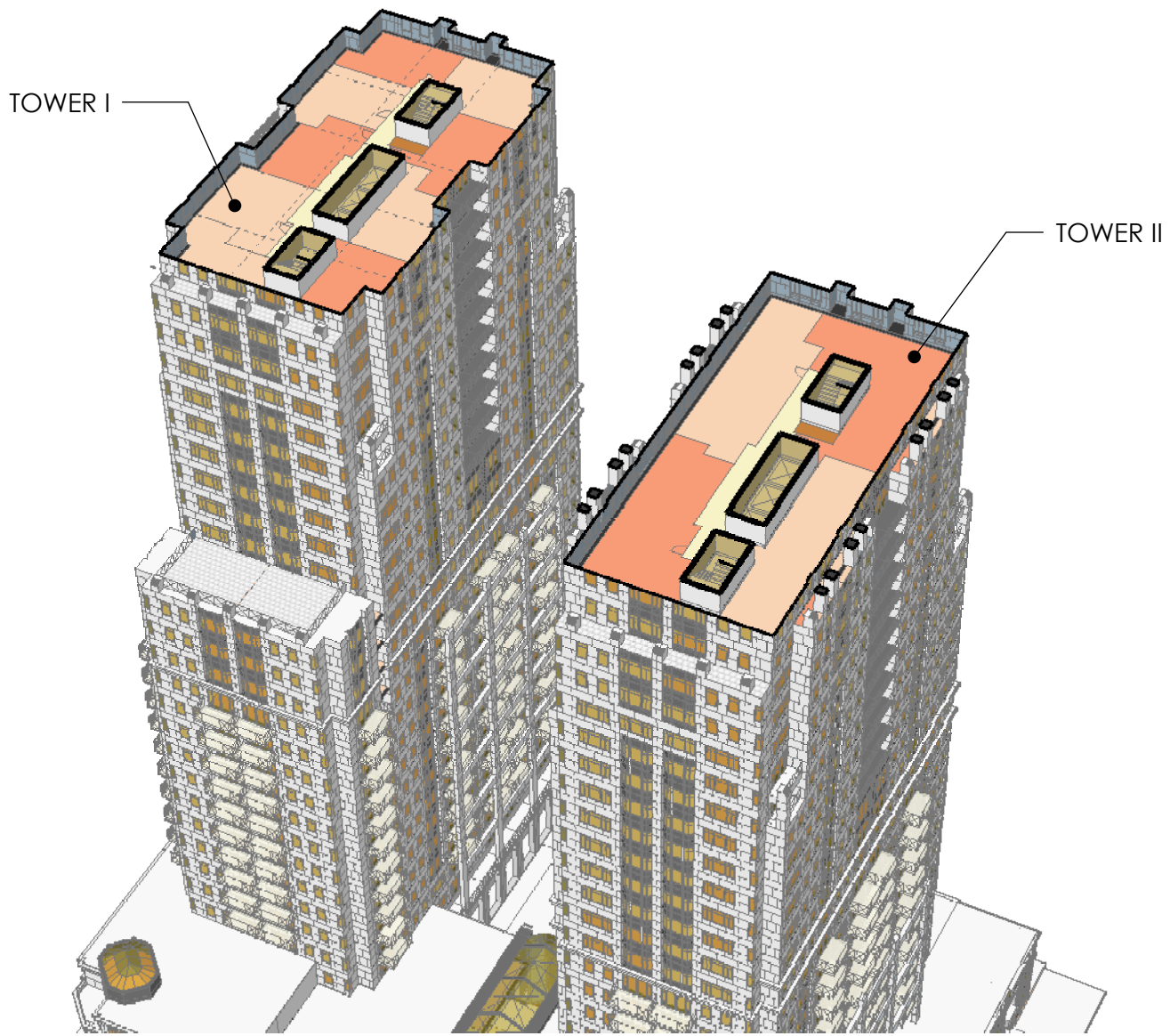
Zwicker  
Zareski  
architecture +  
planning

**The Promenade**  
Halifax, NS

**PHASE 2 FLOOR LAYOUT LVL 18**

**A15**

ISSUED FOR REVIEW  
DATE: May 11, 2020



Zwicker  
Zareski  
architecture +  
planning

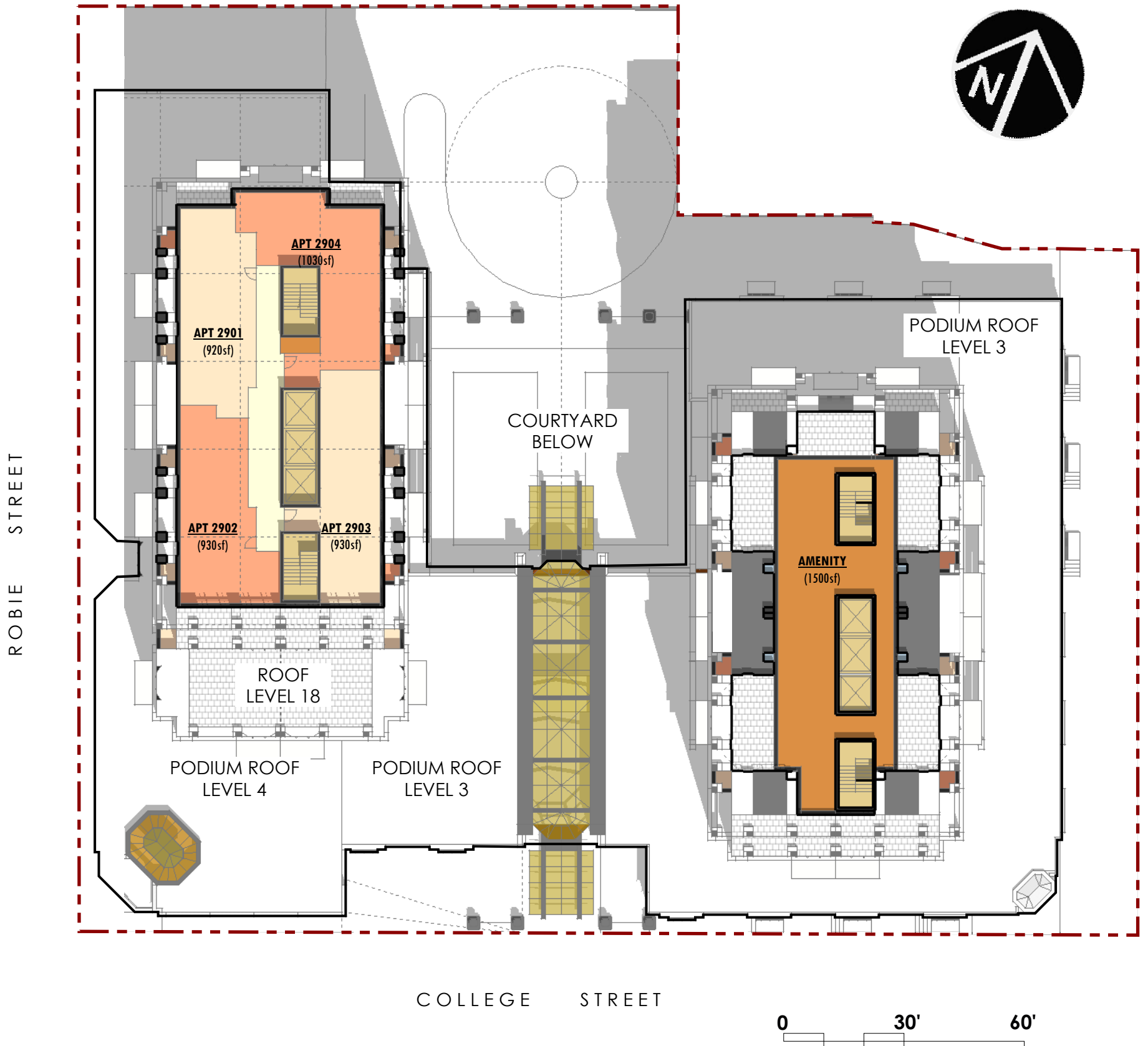
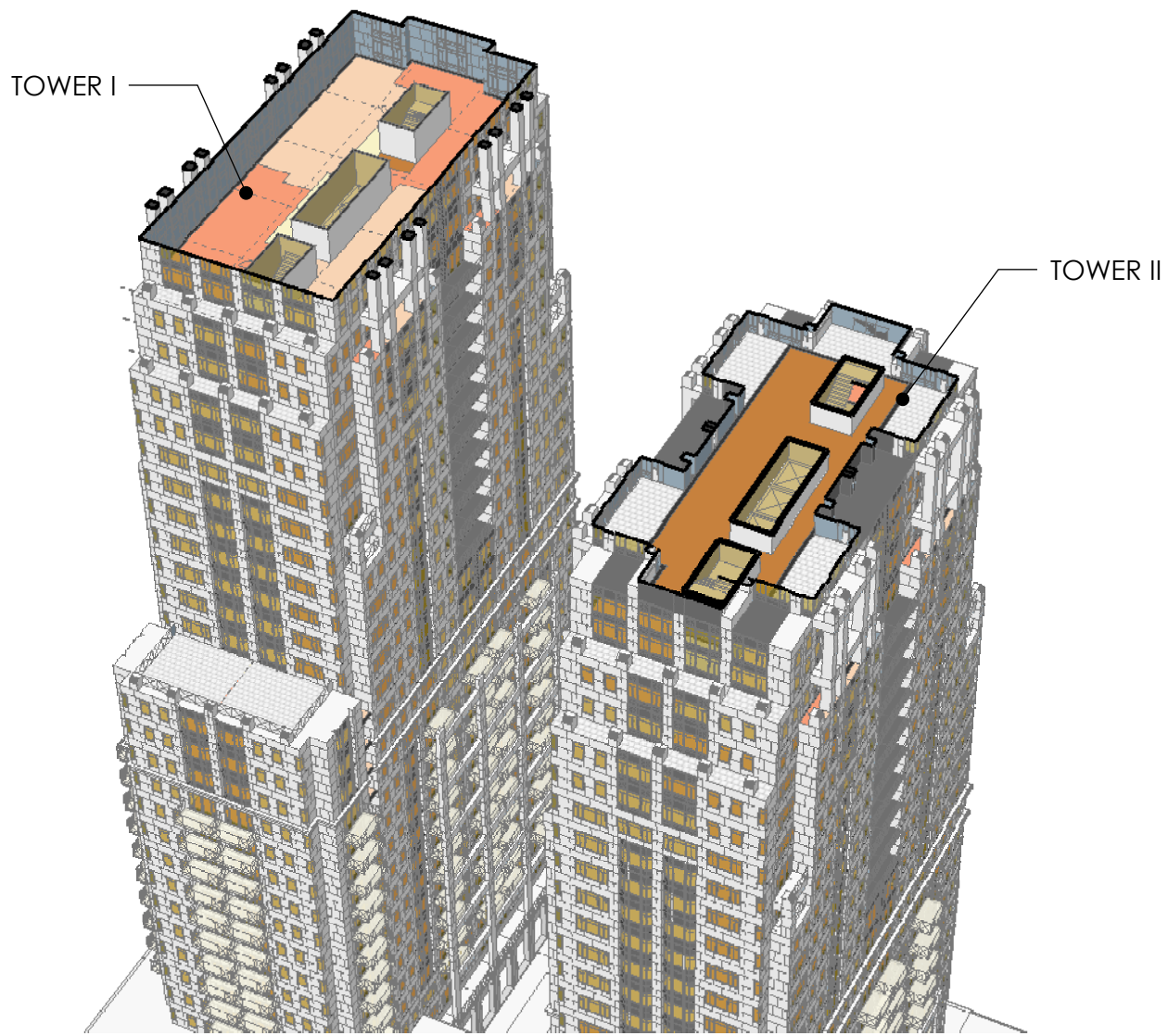
1 Canal Street, Dartmouth, NS B2Y 2W1 | ZZap.ca

**The Promenade**  
Halifax, NS

**PHASE 2 FLOOR LAYOUT LVL 27**

**A16**

ISSUED FOR REVIEW  
DATE: May 11, 2020



Zwicker  
Zareski  
architecture +  
planning

1 Canal Street, Dartmouth, NS B2Y 2W1 | ZZap.ca

**The Promenade**  
Halifax, NS

**PHASE 2 FLOOR LAYOUT LVL 29**

**A17**

ISSUED FOR REVIEW  
DATE: May 11, 2020