

## **H00474 - 1342 Robie Street**

Request to Include Property in the Registry of Heritage Property for  
the Halifax Regional Municipality

Heritage Advisory Committee  
Wednesday, July 22

# Location



# 1. Age



| Date of Construction | Points |
|----------------------|--------|
| 1749 - 1785          | 25     |
| 1786 - 1830          | 20     |
| 1831 - 1867          | 16     |
| 1868 - 1899          | 13     |
| 1900 - 1917          | 9      |
| 1918 - 1945          | 5      |
| 1945 - Present       | 3      |

HALIFAX

## 2b. Historical Importance *(Architectural Style)*

---



- Prime example of the Queen Anne Revival style, which was popular between 1880 and 1915
- Constructed during the Edwardian Era (1900-1914), but it reflects Victorian principles (1837-1900)
- Displays many Queen Anne Revival traits
- These include three of the style's defining features – corner tower, prominent bay window, and front-facing gable

**HALIFAX**

# 2b. Historical Importance *(Architectural Style)*



| Importance  | Points  |
|---|---------|
| Highly important, Unique, or representative of an era     | 16 - 20 |
| Moderately important, Unique, or representative of an era | 11 - 15 |
| Somewhat important, or representative of an era           | 10 - 1  |
| Not important, Unique, or representative of an era        | 0       |

**HALIFAX**

# 3. Significance of Architect



| Status                   | Points |
|--------------------------|--------|
| Nationally               | 7 - 10 |
| Provincially Significant | 4 - 6  |
| Locally Significant      | 1 - 3  |
| Not Significant          | 0      |

**HALIFAX**

# 4a. Architectural Merit (*Construction Type*)



- Timber-framed structure w/ red brick foundation
- Late example of this construction method
- Exterior wood construction would have required superior craftsmanship

| A) Construction type                | Points            |
|-------------------------------------|-------------------|
| <del>Very rare/ early example</del> | <del>7 - 10</del> |
| Moderately rare/ early              | 4 - 6             |
| Somewhat rare/ early example        | 1 - 3             |
| Not rare/ common example            | 0                 |

**HALIFAX**

## 4b. Architectural Merit *(Style)*

- Strong example of the Queen Anne Revival Style (1880-1915)
- Exhibits the style's trademark asymmetry, eclecticism, architectural features, and ornate detailing
- Character defining elements:
  - Brick foundation
  - Steeply-pitched roof w/ dormers
  - Two-storey, semi-hexagonal bay window
  - Pediment gable with arched window, large overhangs, and brackets
  - Three-storey corner tower w/ ornate detailing
  - Stained glass windows





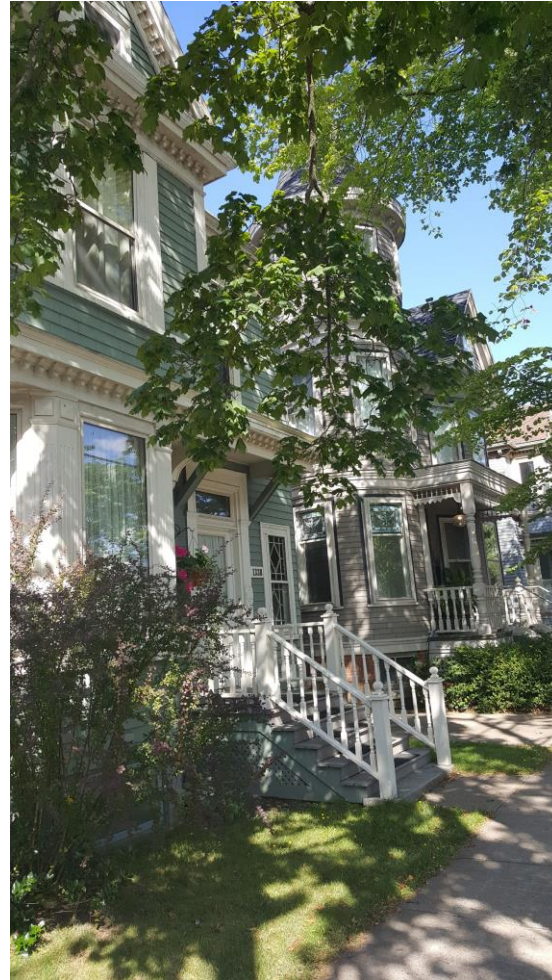
## 4b. Architectural Merit (*Style*)



| B) Style                     | Points |
|------------------------------|--------|
| Very rare/ early example     | 7 - 10 |
| Moderately rare/ early       | 4 - 6  |
| Somewhat rare/ early example | 1 - 3  |
| Not rare/ common example     | 0      |

**HALIFAX**

# 5. Architectural Integrity



| Exterior              | Points  |
|-----------------------|---------|
| Largely unchanged     | 11 - 15 |
| Modest changes        | 6 - 10  |
| Major changes         | 1 - 5   |
| Seriously compromised | 0       |

HALIFAX

# 6. Relationship To Surrounding Area



The immediate area is defined by older detached dwellings on large lots

The dwelling illustrates Halifax's Late-Victorian residential architecture and reinforces the neighbourhood's character

| Points | Comments   |
|--------|--|
| 6 - 10 | The building is an important architectural asset contributing to the heritage character of the surrounding area. |
| 1 - 5  | The Architecture is compatible with the surrounding area and maintains its heritage character.                   |
| 0      | Does not contribute to the character of the surrounding area.  |

# Recommendation

---

It is recommended that the Heritage Advisory Committee recommend that Regional Council:

1. Set a date for a heritage hearing to consider the inclusion of 1342 Robie Street, Halifax, as shown on Map 1, in the Registry of Heritage Property for the Halifax Regional Municipality; and
2. Approve the request to include 1342 Robie Street, Halifax, as shown on Map 1, in the Registry of Heritage Property for the Halifax Regional Municipality as a municipal heritage property.

**HALIFAX**

**Thank You**