

EXTERIOR MATERIALS LEGEND

1	MAINTAIN EXISTING HERITAGE CLADDING
2	ALUMINUM CURTAIN WALL
3	EXTERIOR WINDOW UNIT
4	BALCONY/STAIR GUARDRAIL
5	PROVIDE NON-COMBUSTIBLE CLADDING IF REQUIRED
6	ASPHALT SHINGLES
7	MASONRY UNIT



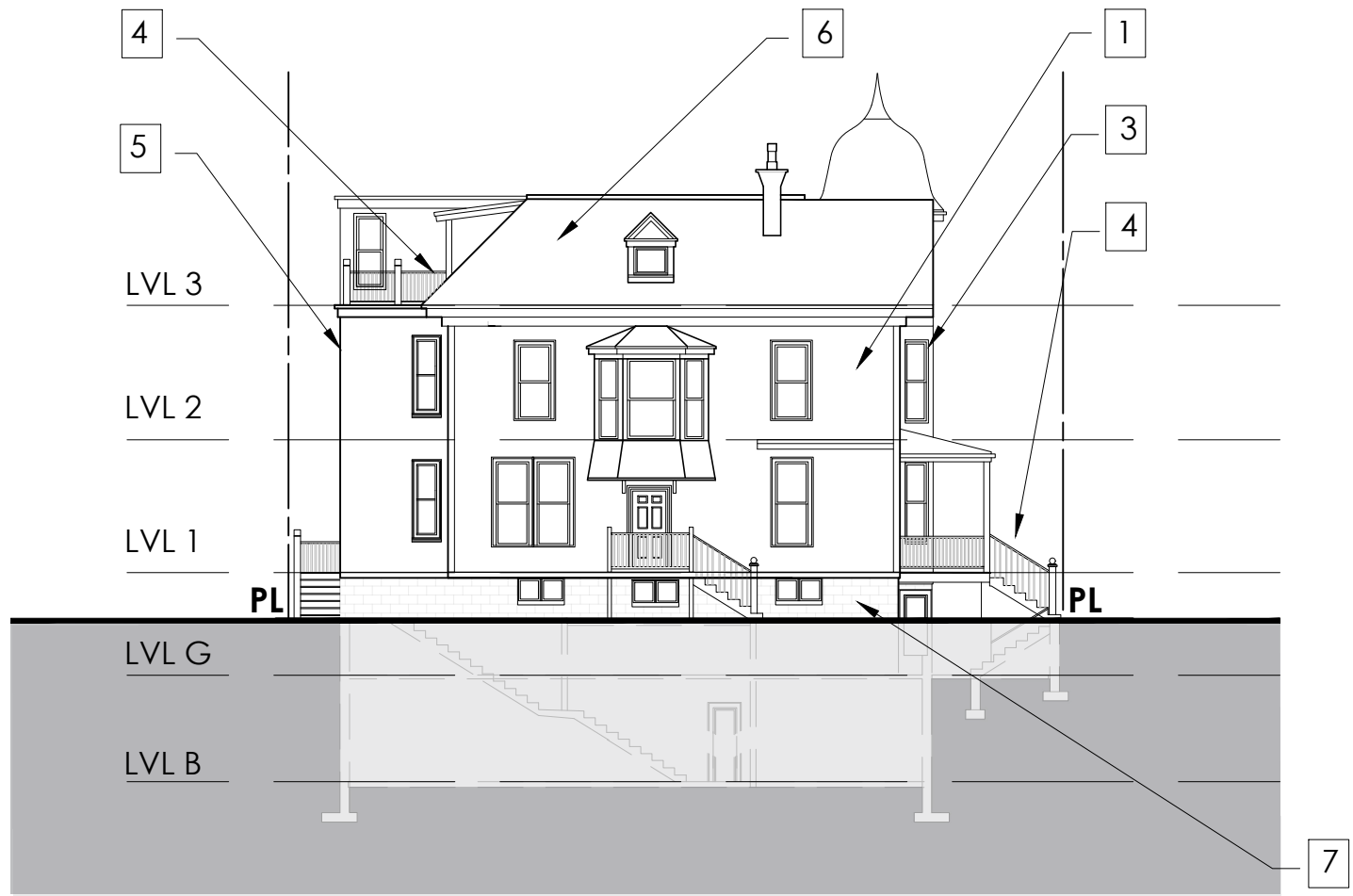
ELEVATION - SOUTH
(COLLEGE STREET)



ELEVATION - NORTH



EXTERIOR MATERIALS LEGEND	
1	MAINTAIN EXISTING HERITAGE CLADDING
2	ALUMINUM CURTAIN WALL
3	EXTERIOR WINDOW UNIT
4	BALCONY/STAIR GUARDRAIL
5	PROVIDE NON-COMBUSTIBLE CLADDING IF REQUIRED
6	ASPHALT SHINGLES
7	MASONRY UNIT

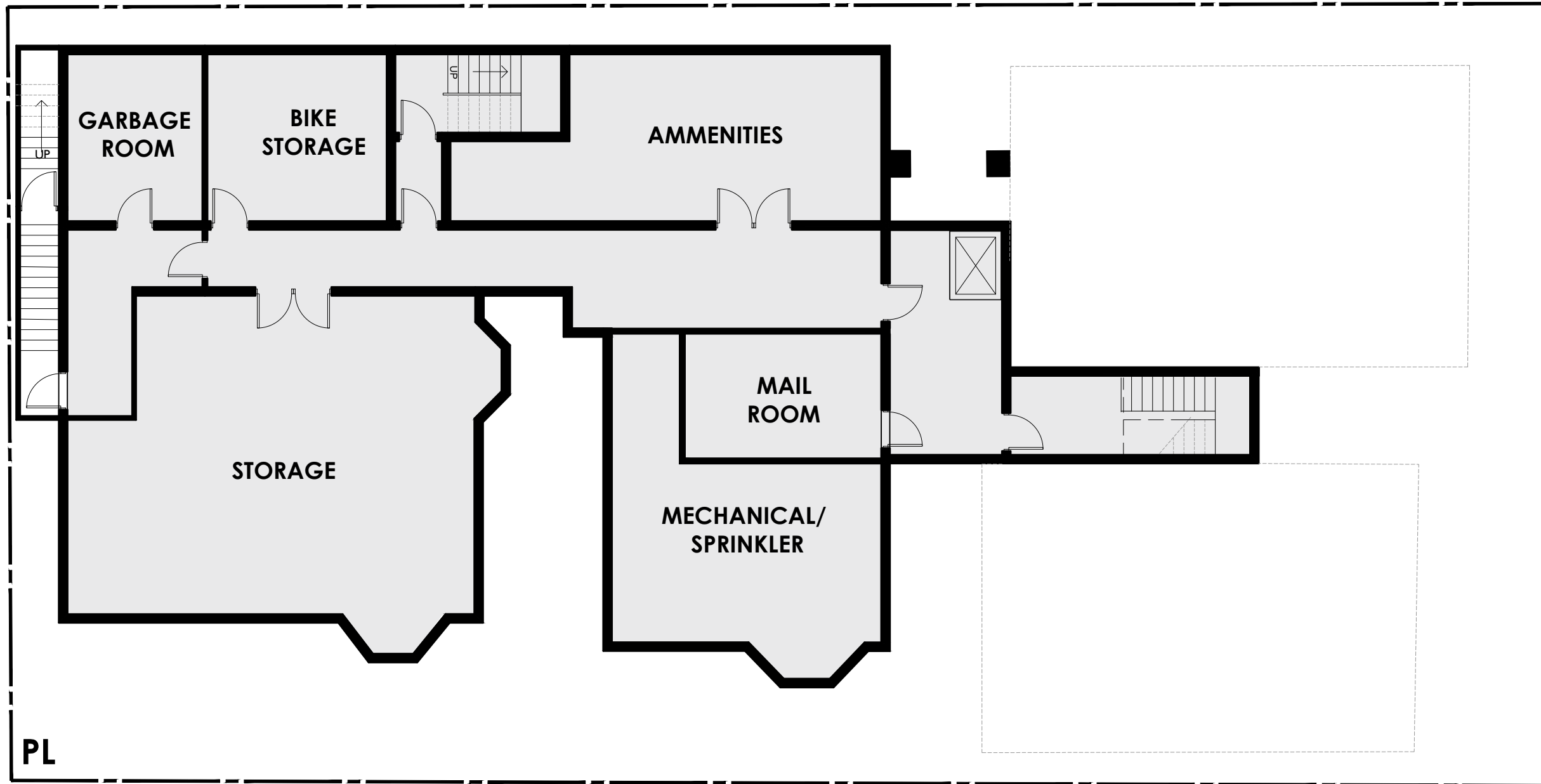


ELEVATION - WEST



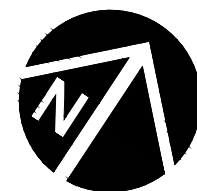
ELEVATION - EAST
(CARLTON STREET)



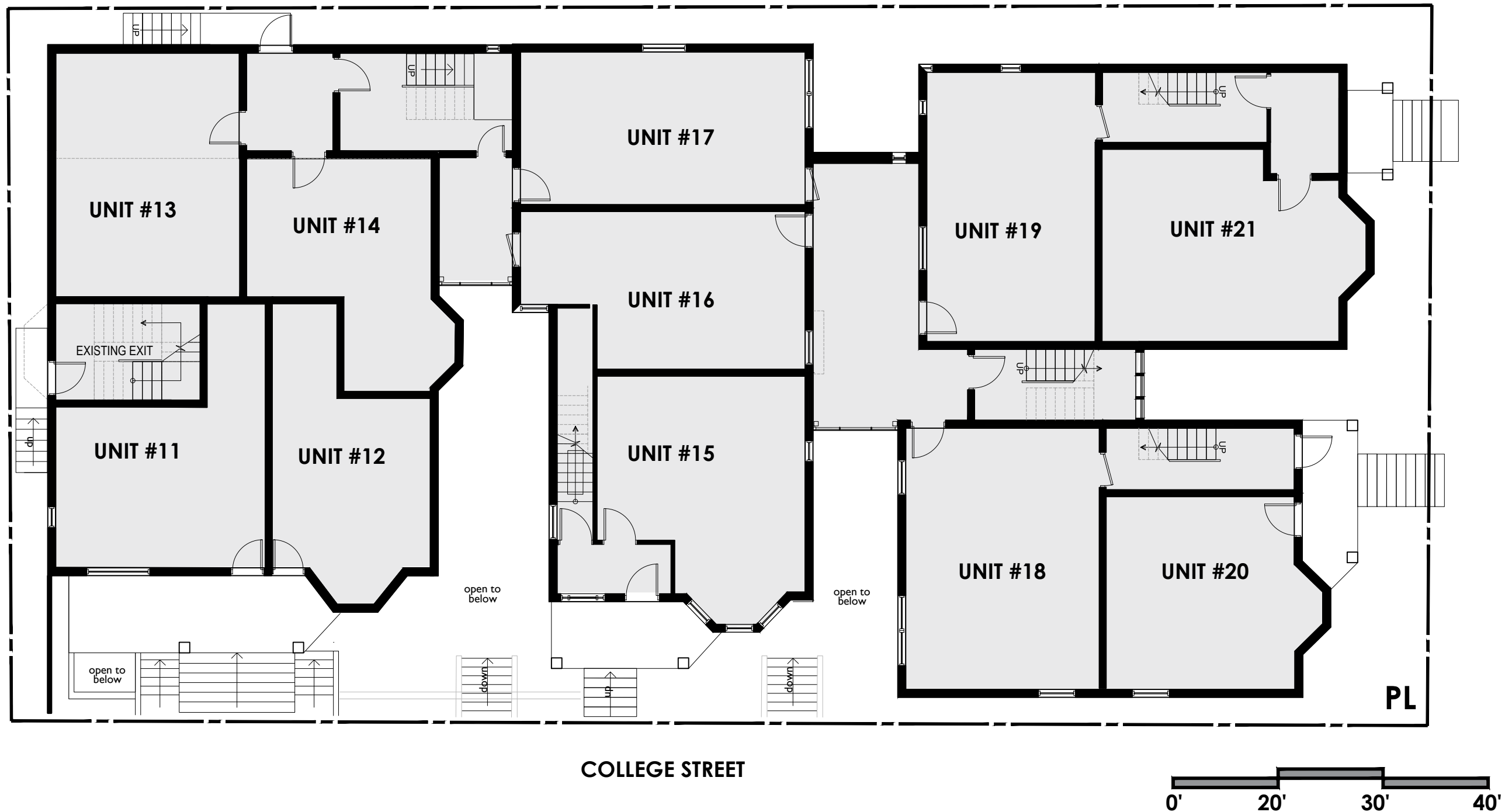


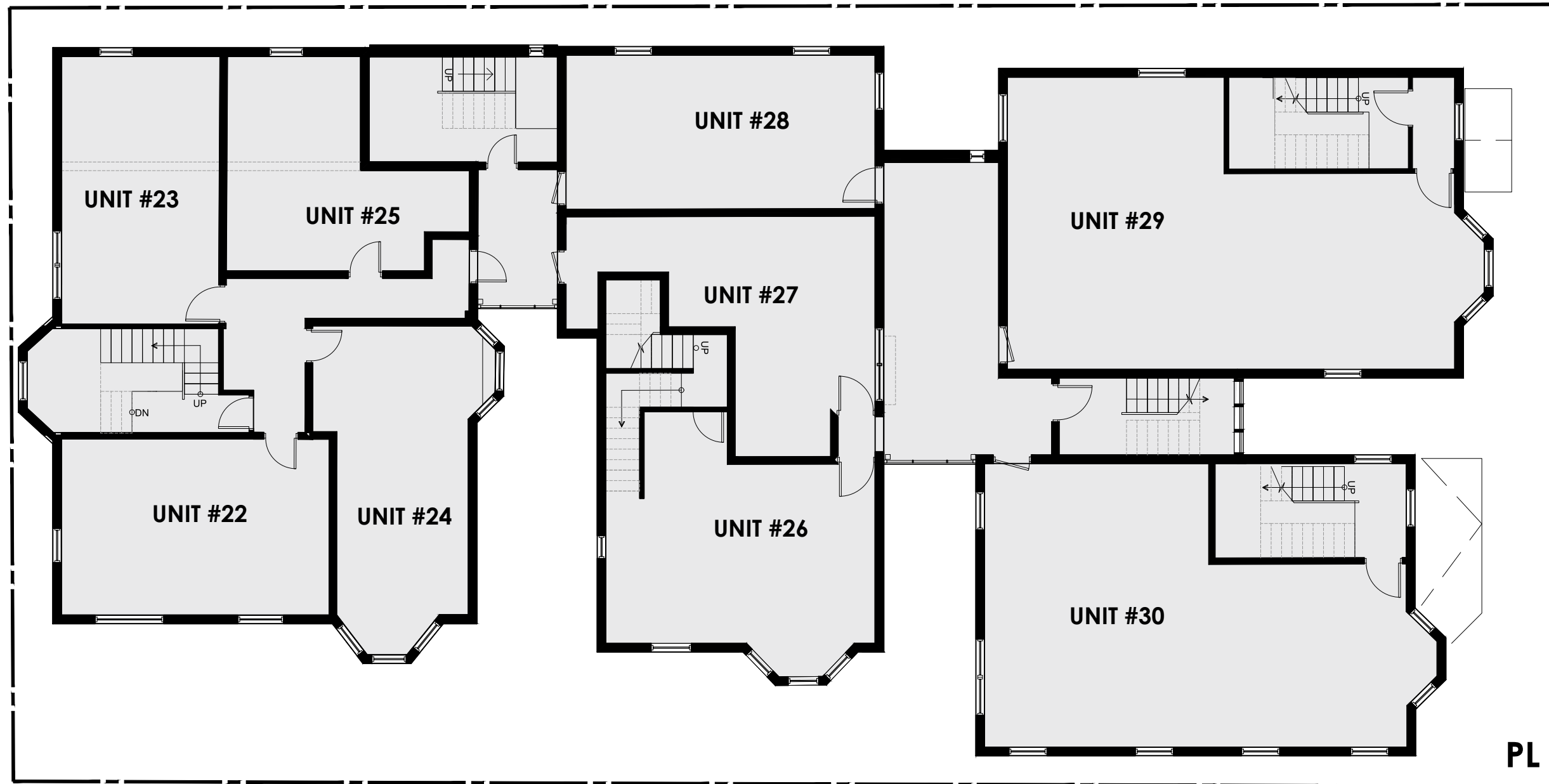
CARLETON STREET

COLLEGE STREET



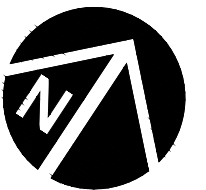


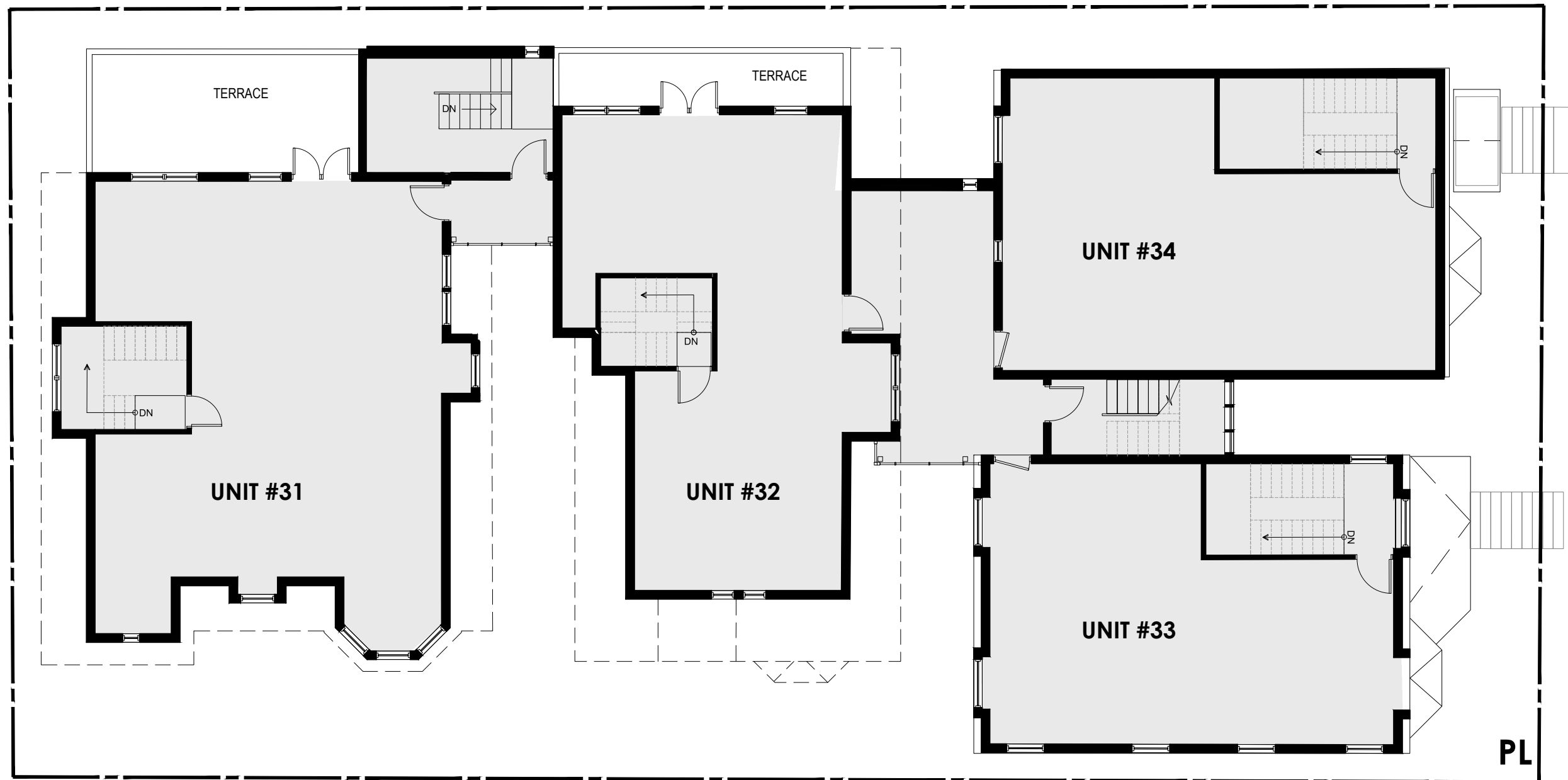




CARLETON STREET

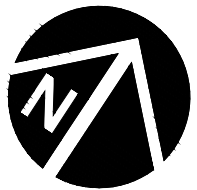
COLLEGE STREET



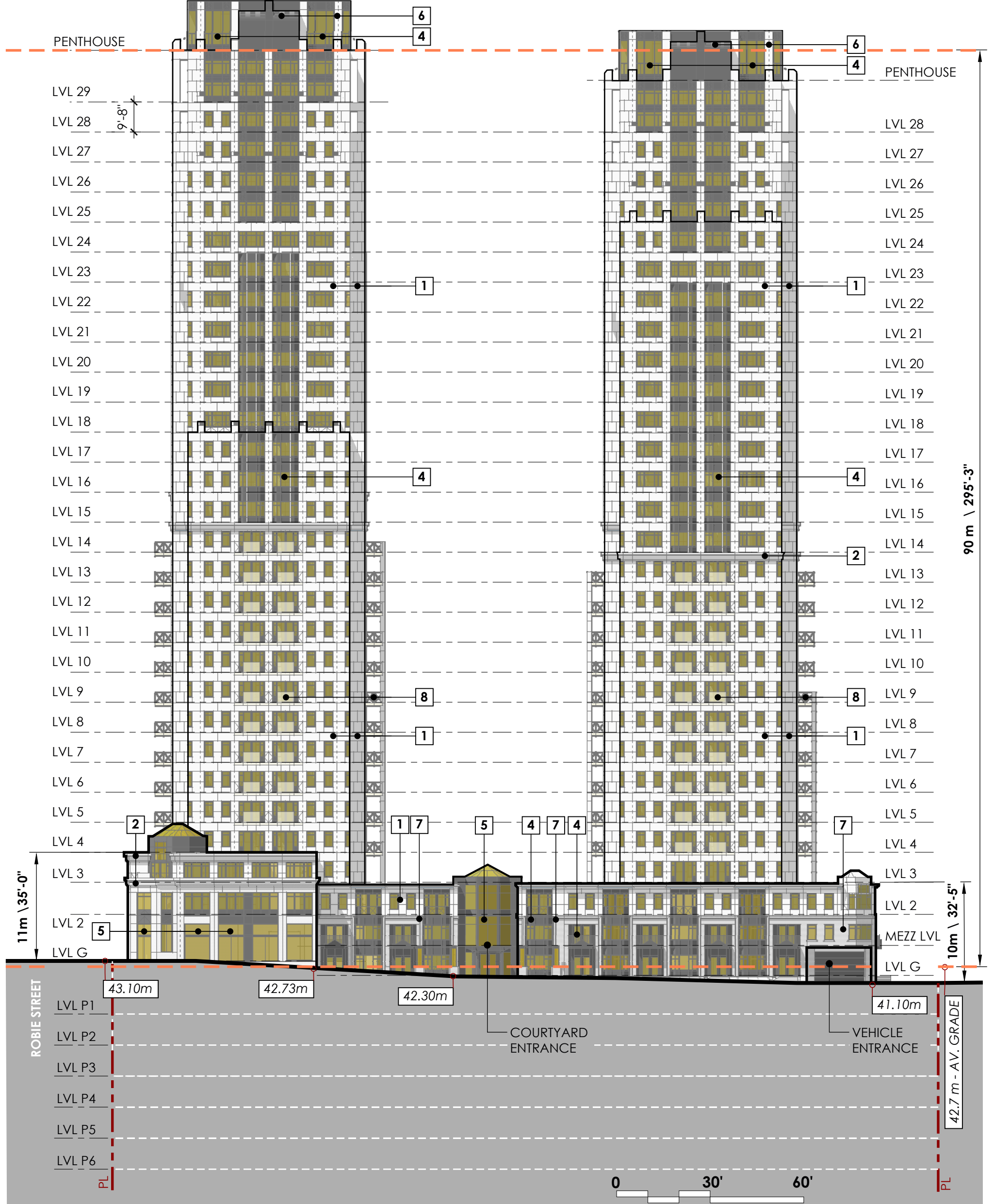


CARLETON STREET

COLLEGE STREET

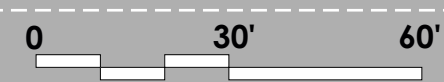


EXTERIOR MATERIALS LEGEND	
1	PRECAST CONCRETE PANEL
2	PRECAST CORNICE
3	PRECAST PILASTER
4	ALUMINUM CURTAIN WALL
5	HIGH TRANSPARENCY STOREFRONT GLASS
6	ALUMINUM COMPOSITE PANEL
7	MASONRY VENEER
8	ALUMINUM FRAMED GLASS GUARD

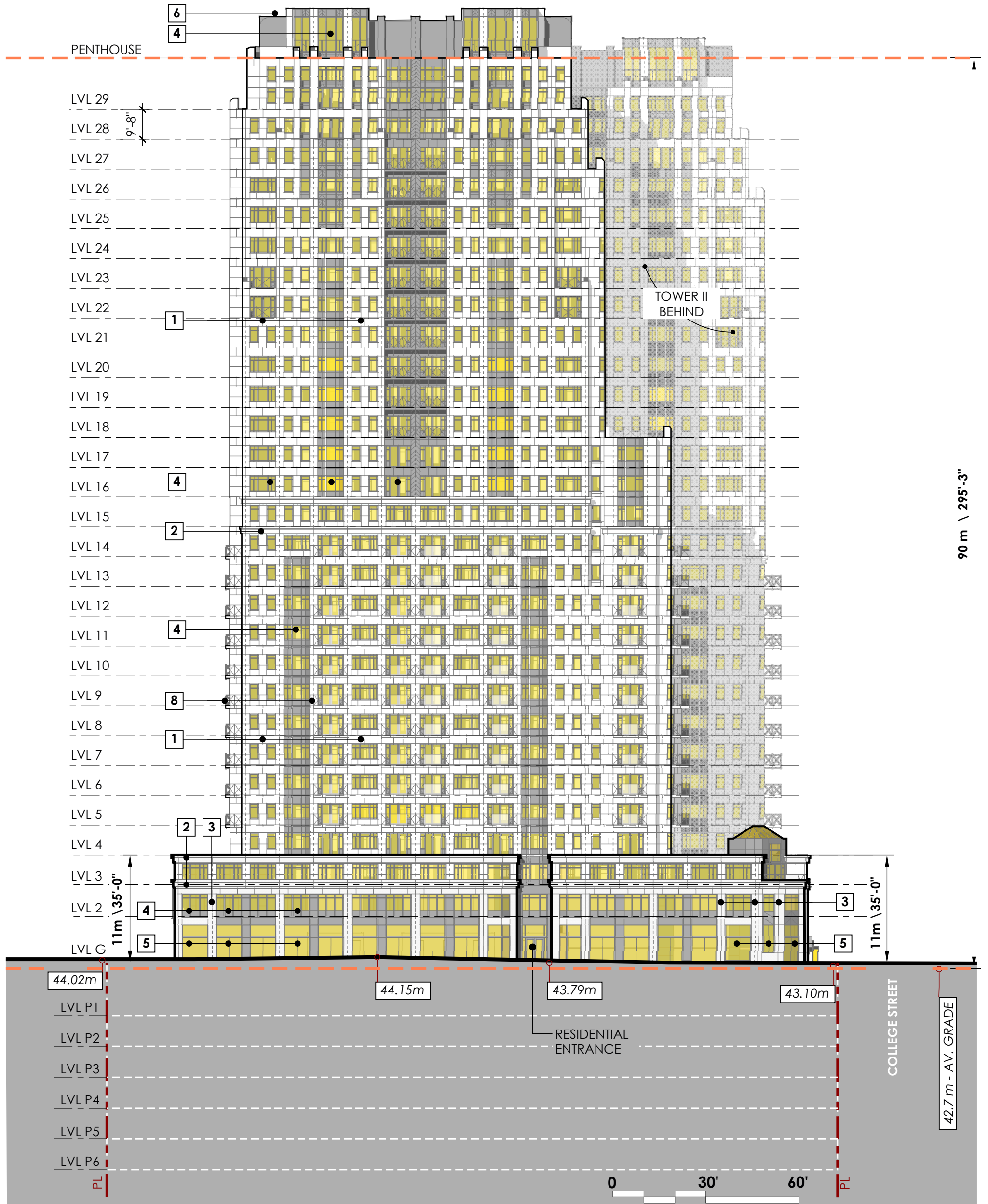


ROBIE STREET

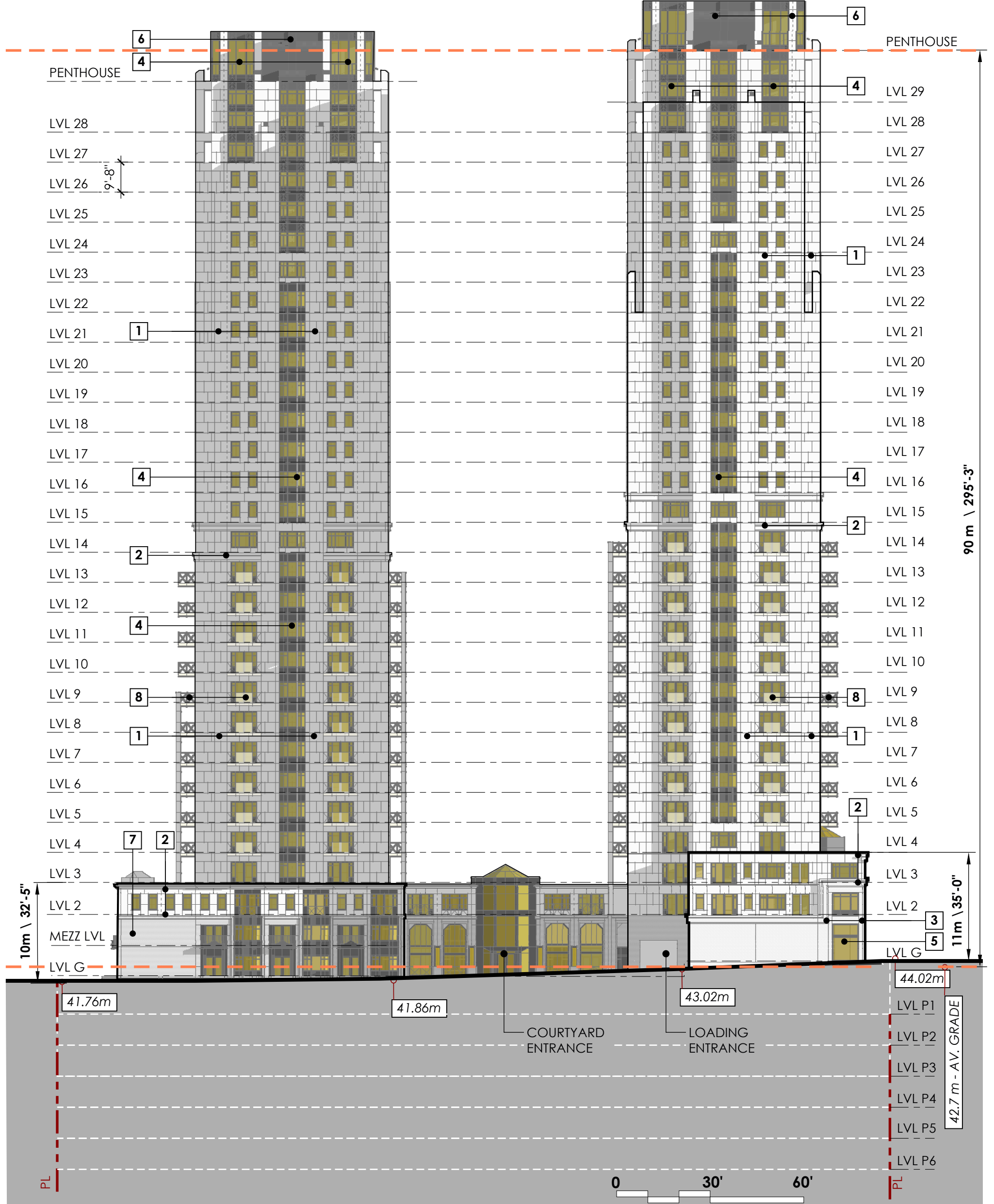
42.7 m - AV. GRADE



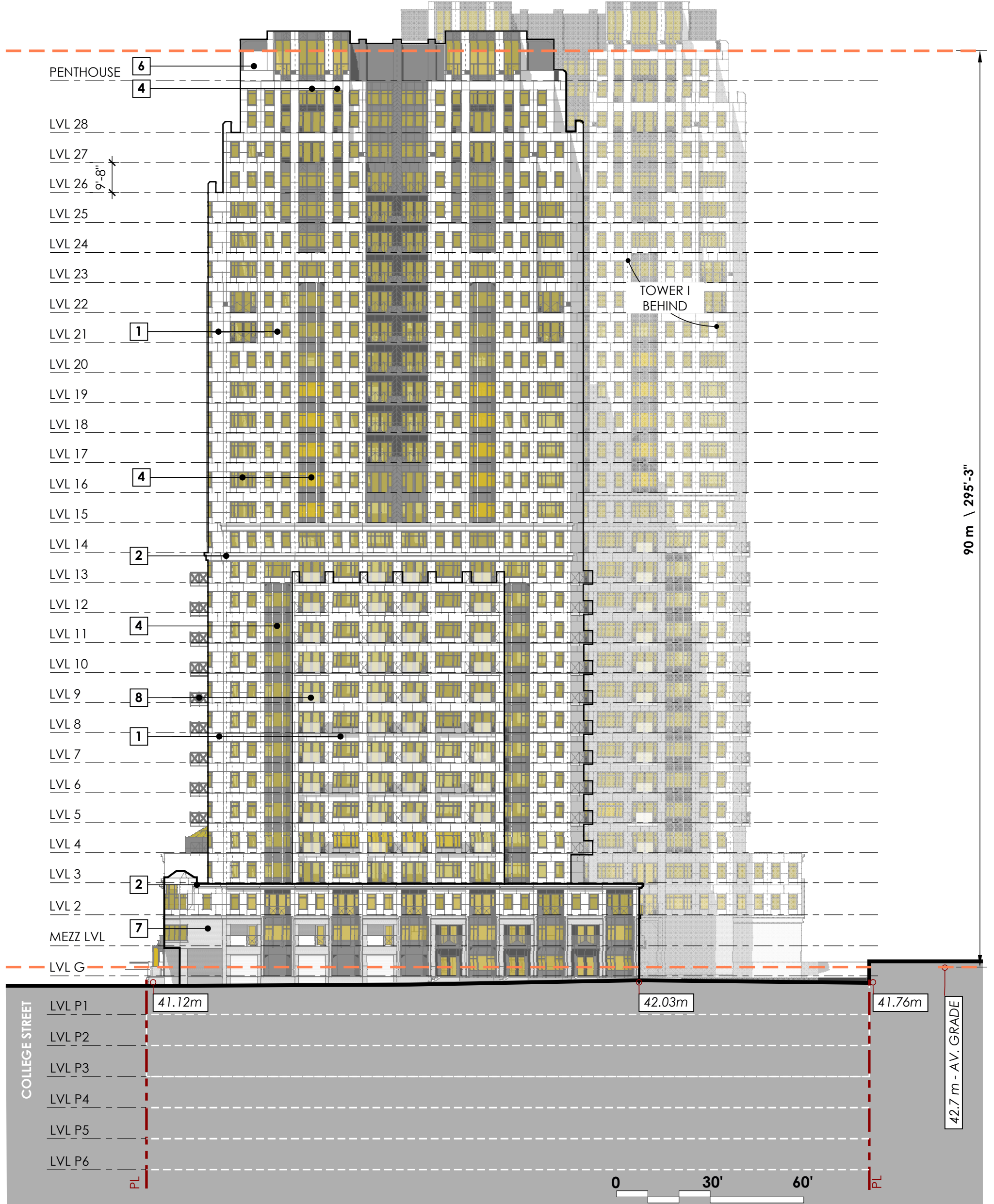
EXTERIOR MATERIALS LEGEND	
1	PRECAST CONCRETE PANEL
2	PRECAST CORNICE
3	PRECAST PILASTER
4	ALUMINUM CURTAIN WALL
5	HIGH TRANSPARENCY STOREFRONT GLASS
6	ALUMINUM COMPOSITE PANEL
7	MASONRY VENEER
8	ALUMINUM FRAMED GLASS GUARD



EXTERIOR MATERIALS LEGEND	
1	PRECAST CONCRETE PANEL
2	PRECAST CORNICE
3	PRECAST PILASTER
4	ALUMINUM CURTAIN WALL
5	HIGH TRANSPARENCY STOREFRONT GLASS
6	ALUMINUM COMPOSITE PANEL
7	MASONRY VENEER
8	ALUMINUM FRAMED GLASS GUARD

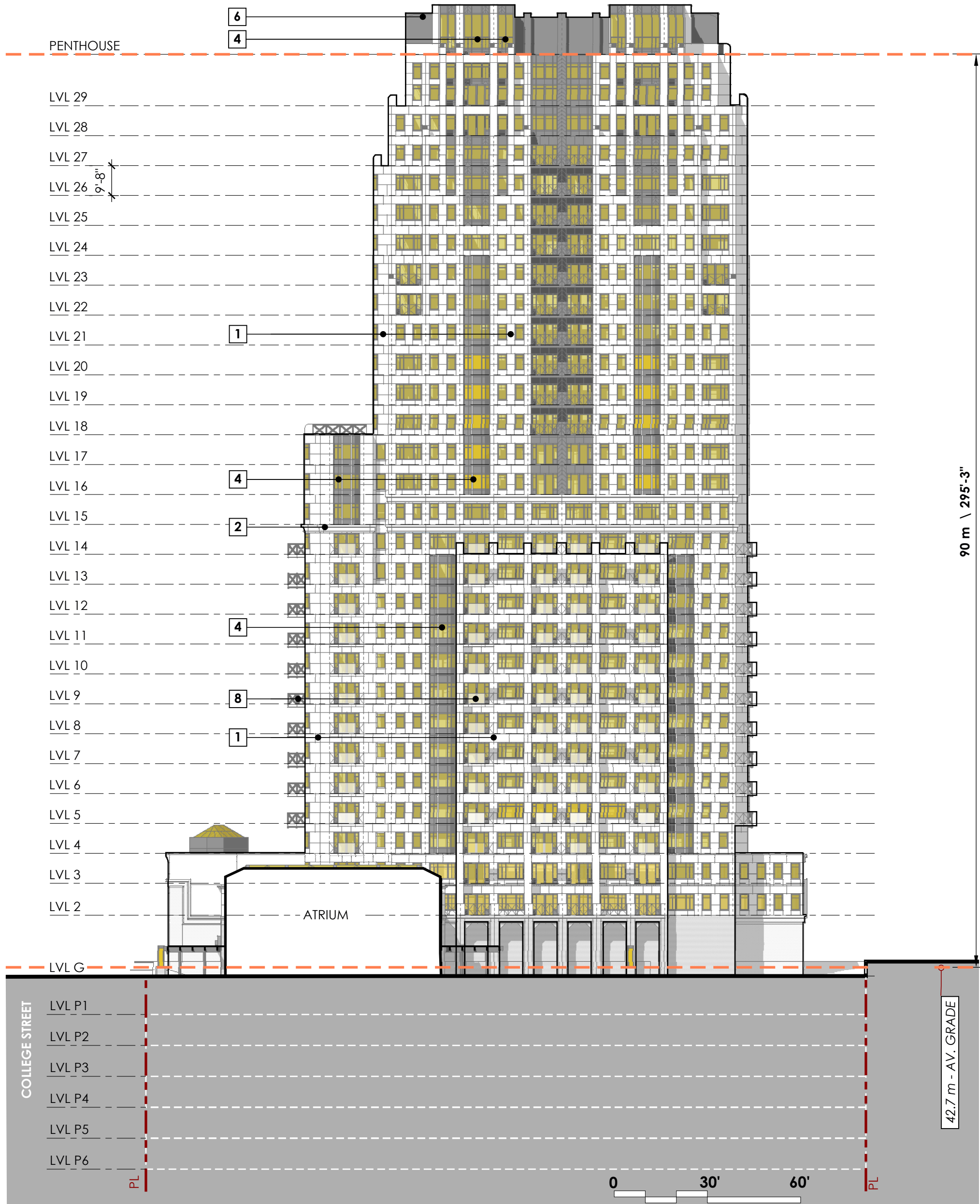


EXTERIOR MATERIALS LEGEND	
1	PRECAST CONCRETE PANEL
2	PRECAST CORNICE
3	PRECAST PILASTER
4	ALUMINUM CURTAIN WALL
5	HIGH TRANSPARENCY STOREFRONT GLASS
6	ALUMINUM COMPOSITE PANEL
7	MASONRY VENEER
8	ALUMINUM FRAMED GLASS GUARD



COLLEGE STREET

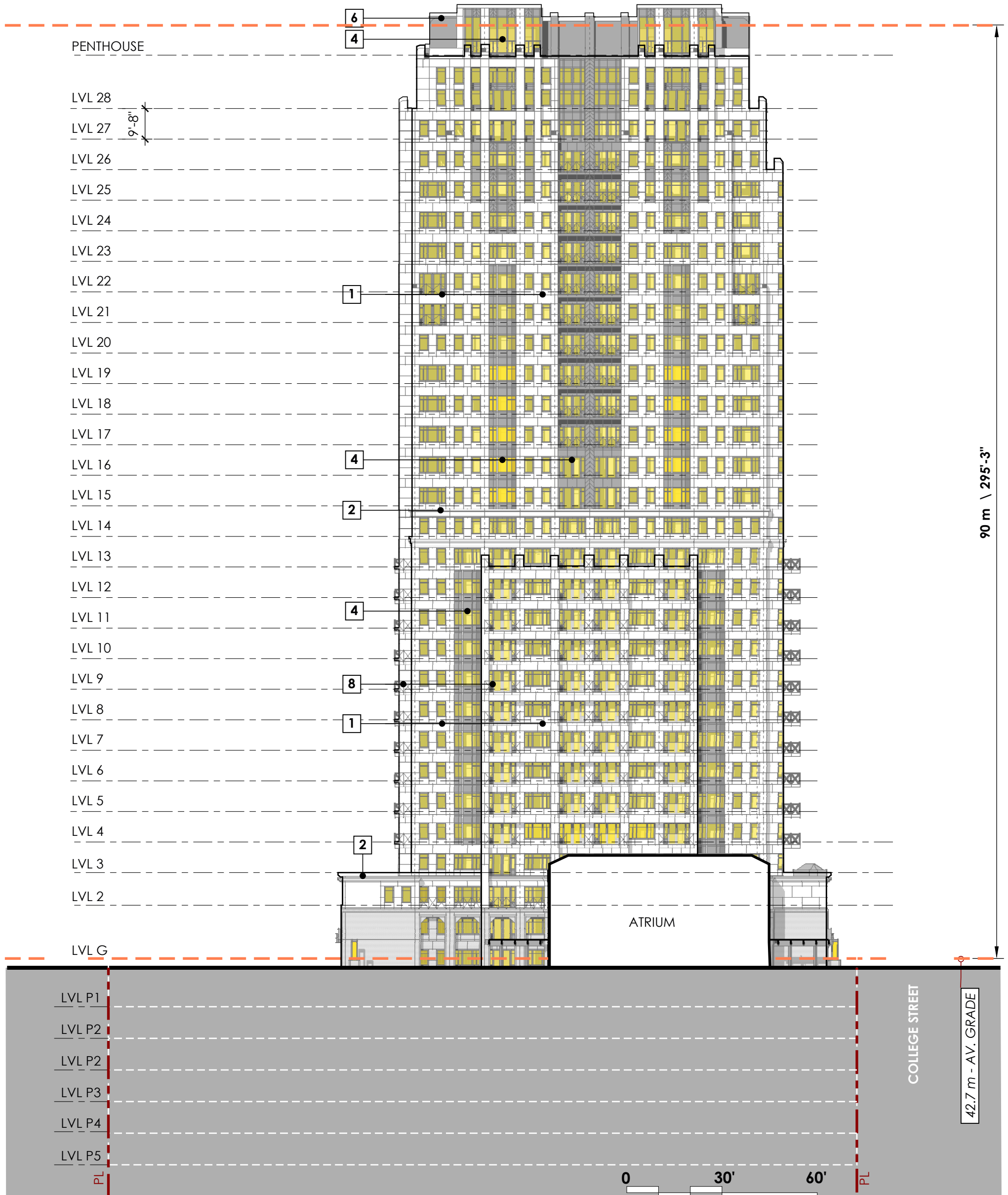
EXTERIOR MATERIALS LEGEND	
1	PRECAST CONCRETE PANEL
2	PRECAST CORNICE
3	PRECAST PILASTER
4	ALUMINUM CURTAIN WALL
5	HIGH TRANSPARENCY STOREFRONT GLASS
6	ALUMINUM COMPOSITE PANEL
7	MASONRY VENEER
8	ALUMINUM FRAMED GLASS GUARD

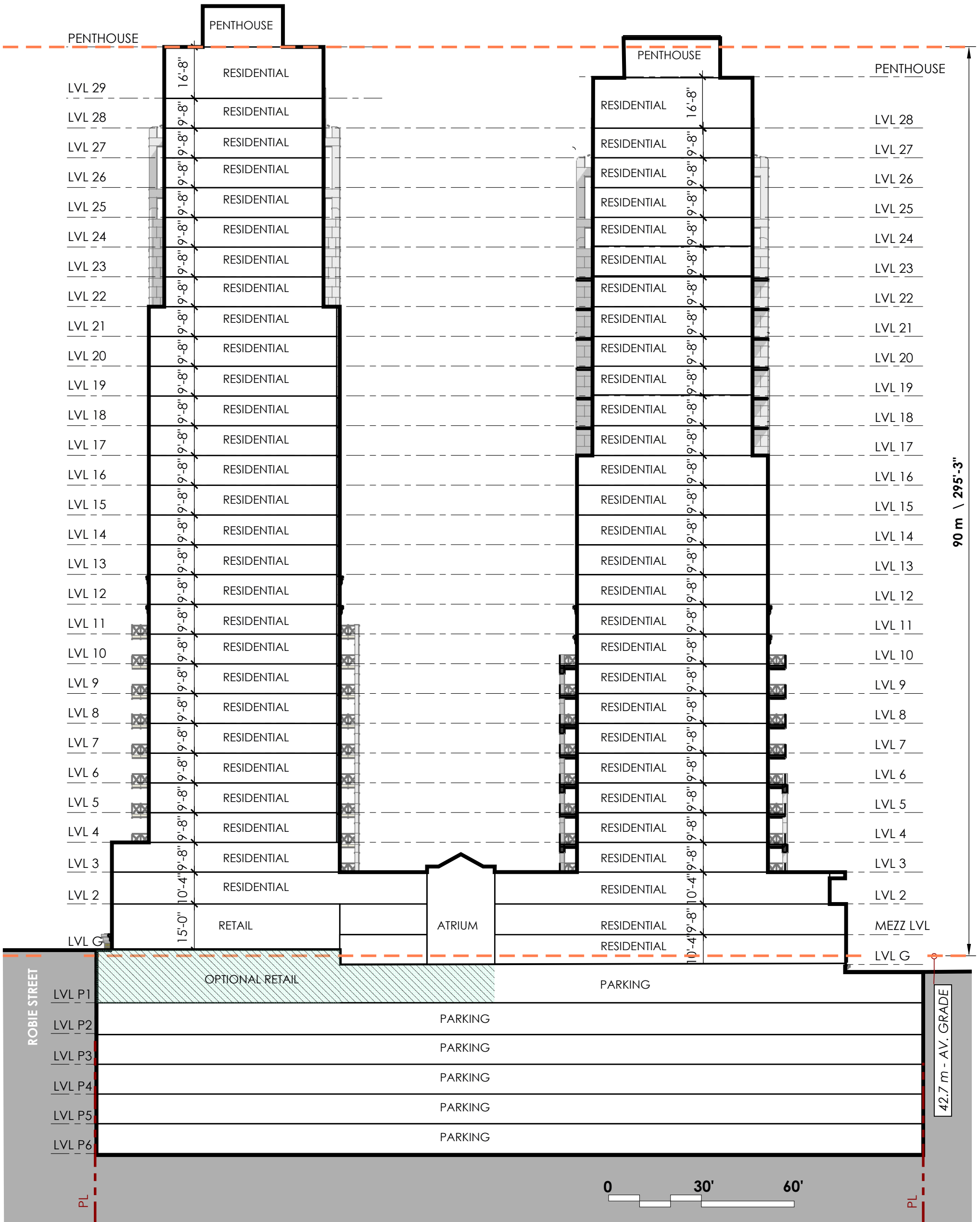


COLLEGE STREET

42.7 m - AV. GRADE

EXTERIOR MATERIALS LEGEND	
1	PRECAST CONCRETE PANEL
2	PRECAST CORNICE
3	PRECAST PILASTER
4	ALUMINUM CURTAIN WALL
5	HIGH TRANSPARENCY STOREFRONT GLASS
6	ALUMINUM COMPOSITE PANEL
7	MASONRY VENEER
8	ALUMINUM FRAMED GLASS GUARD





Zwicker
Zareski
architecture +
planning

1 Canal Street, Dartmouth, NS B2Y 2W1 | Zzap.ca

The Promenade

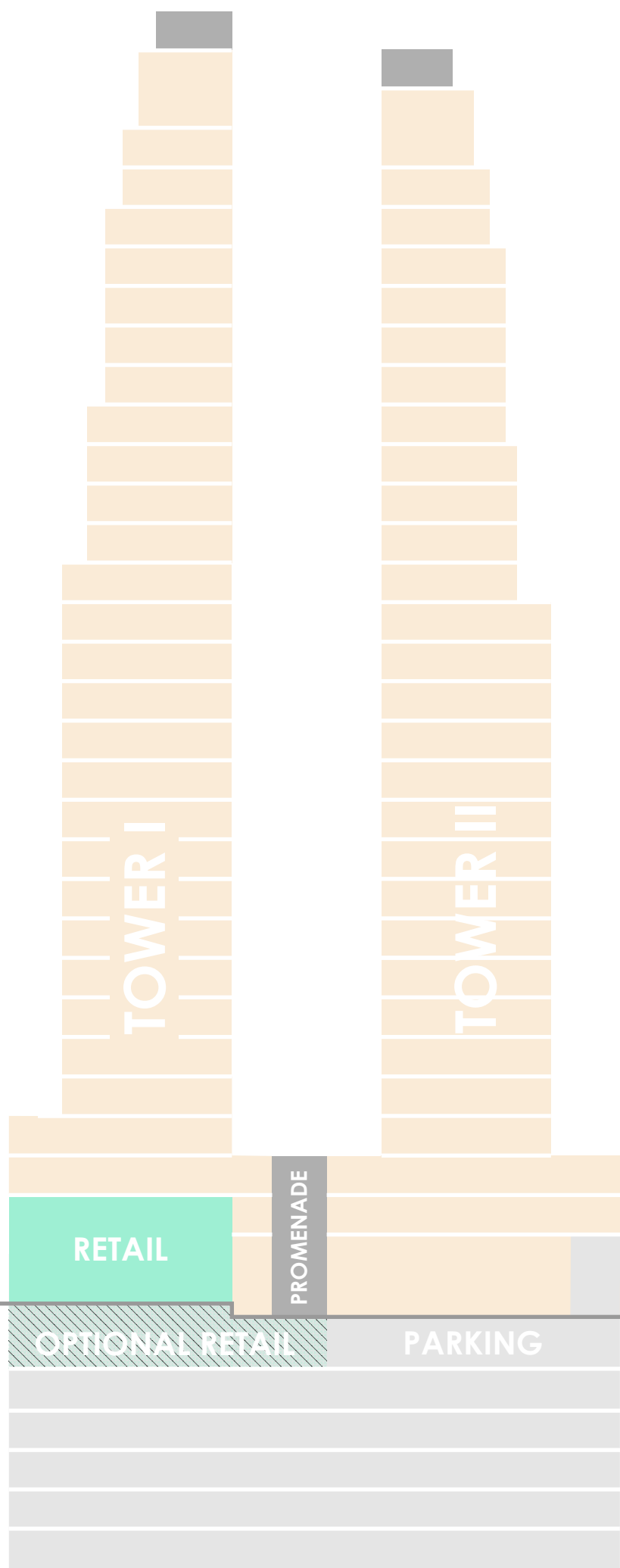
Halifax, NS

PHASE 2 BUILDING SECTION

SCALE: 1"=30'

A08

ISSUED FOR REVIEW
DATE: May 11, 2020



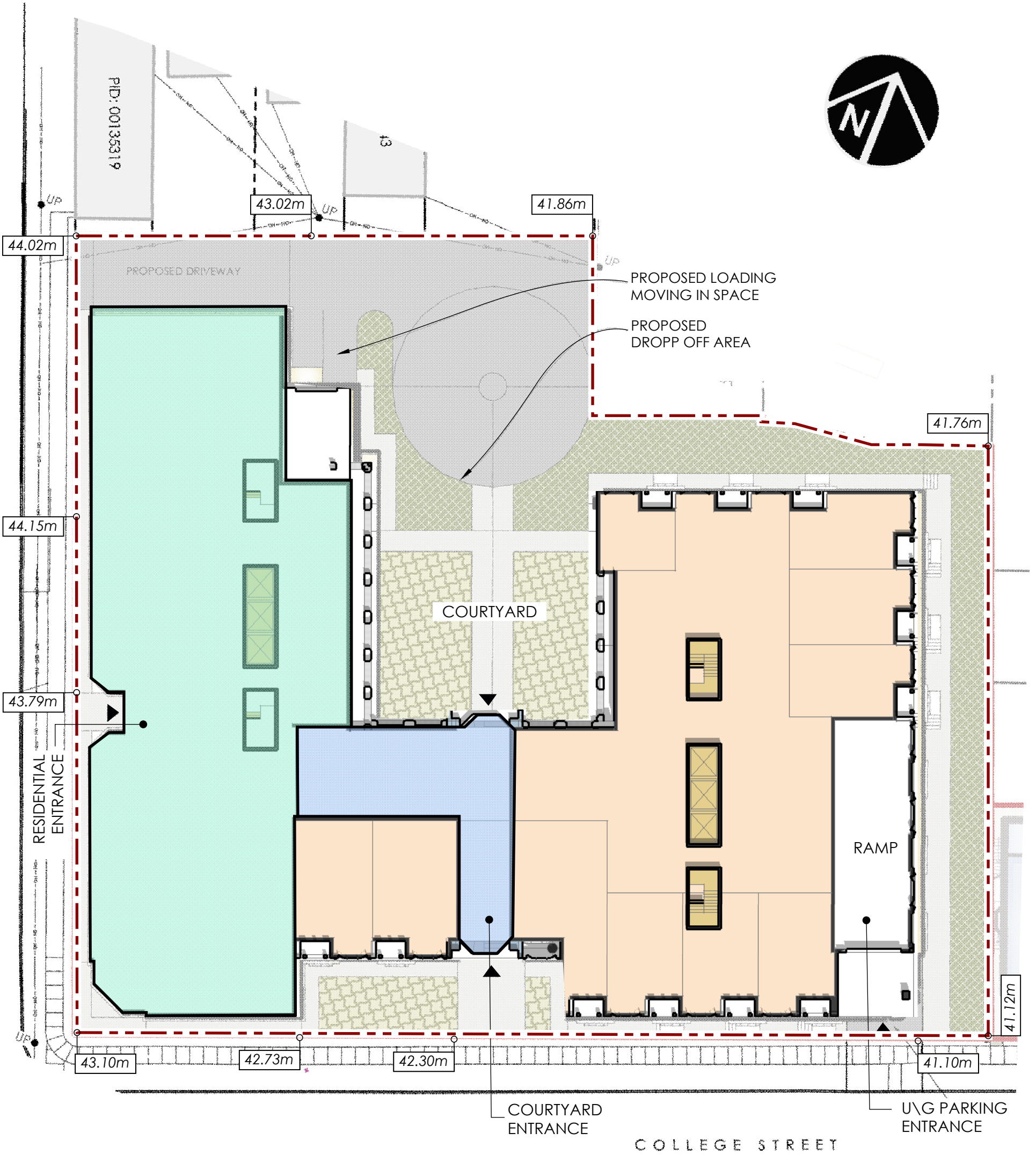
FLOOR	TOWER I			TOWER II			
	GFA	RENTABLE	UNIT #	GFA	RENTABLE	UNIT #	
PENTHOUSE	1,500	1,275		1,500	1,275		
LOFT	1,000	5,038	4	1,000	5,038	4	
LVL 29	4,750			4,750			
LVL 28	5,460	4,641	4	5,460	4,641	4	
LVL 27	5,460	4,641	9	5,460	4,641	4	
LVL 26	6,330	5,381	9	5,460	4,641	9	
LVL 25	6,330	5,381	9	6,330	5,381	9	
LVL 24	6,330	5,381	9	6,330	5,381	9	
LVL 23	6,330	5,381	9	6,330	5,381	9	
LVL 22	6,330	5,381	9	6,330	5,381	9	
LVL 21	6,460	5,491	9	6,330	5,381	9	
LVL 20	6,460	5,491	9	6,460	5,491	9	
LVL 19	6,460	5,491	9	6,460	5,491	9	
LVL 18	6,460	5,491	9	6,460	5,491	9	
LVL 17	7,960	6,766	12	6,460	5,491	9	
LVL 16	7,960	6,766	12	6,630	5,636	10	
LVL 15	7,960	6,766	12	6,630	5,636	10	
LVL 14	7,960	6,766	12	6,630	5,636	10	
LVL 13	7,960	6,766	12	6,630	5,636	10	
LVL 12	7,960	6,766	12	6,630	5,636	10	
LVL 11	7,960	6,766	12	6,630	5,636	10	
LVL 10	7,960	6,766	12	6,630	5,636	10	
LVL 9	7,960	6,766	12	6,630	5,636	10	
LVL 8	7,960	6,766	12	6,630	5,636	10	
LVL 7	7,960	6,766	12	6,630	5,636	10	
LVL 6	7,960	6,766	12	6,630	5,636	10	
LVL 5	7,960	6,766	12	6,630	5,636	10	
LVL 4	7,960	6,766	12	6,630	5,636	10	
LVL 3	13,350	11,348	14	6,630	5,636	10	
LVL 2	15,880	13,498	17	14,178	12,051	13	
LVL G	12,347	10,495		2,123	15,030	12,776	13
					14,050	11,943	16
TOTALS	214,520	192,987	297	210,220	178,837	280	

LVL P1	48,700	21 SPACES	INCLUDING - 30,500 SF RETAIL
LVL P2	48,700	98 SPACES	
LVL P3	48,700	98 SPACES	
LVL P4	48,700	98 SPACES	
LVL P5	48,700	98 SPACES	
LVL P6	48,700	98 SPACES	

TOTALS

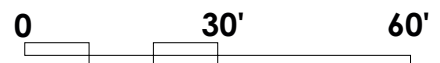
	GFA ABOVE GROUND \ SF	RENTABLE 85%	UNIT #	PARKING
RESIDENTIAL	424,740 SF	359,329 SF		
RETAIL	12,347 SF	10,495 SF		
PROMENADE \ PENTHOUSE		4,355 SF		
TOTAL	442,210 SF	374,179 SF	577	511
MAX FAR	8			
LOT AREA	55,353 SF			
MAX ALLOWABLE GFA	442,824 SF			

ROBIE STREET



LEGEND

- Residential
- Retail
- Atrium
- Core
- Site Boundary
- Building Access Point
- 41.76m Grade Elevation



Zwicker
Zareski
architecture +
planning

1 Canal Street, Dartmouth, NS B2Y 2W1 | Zzap.ca

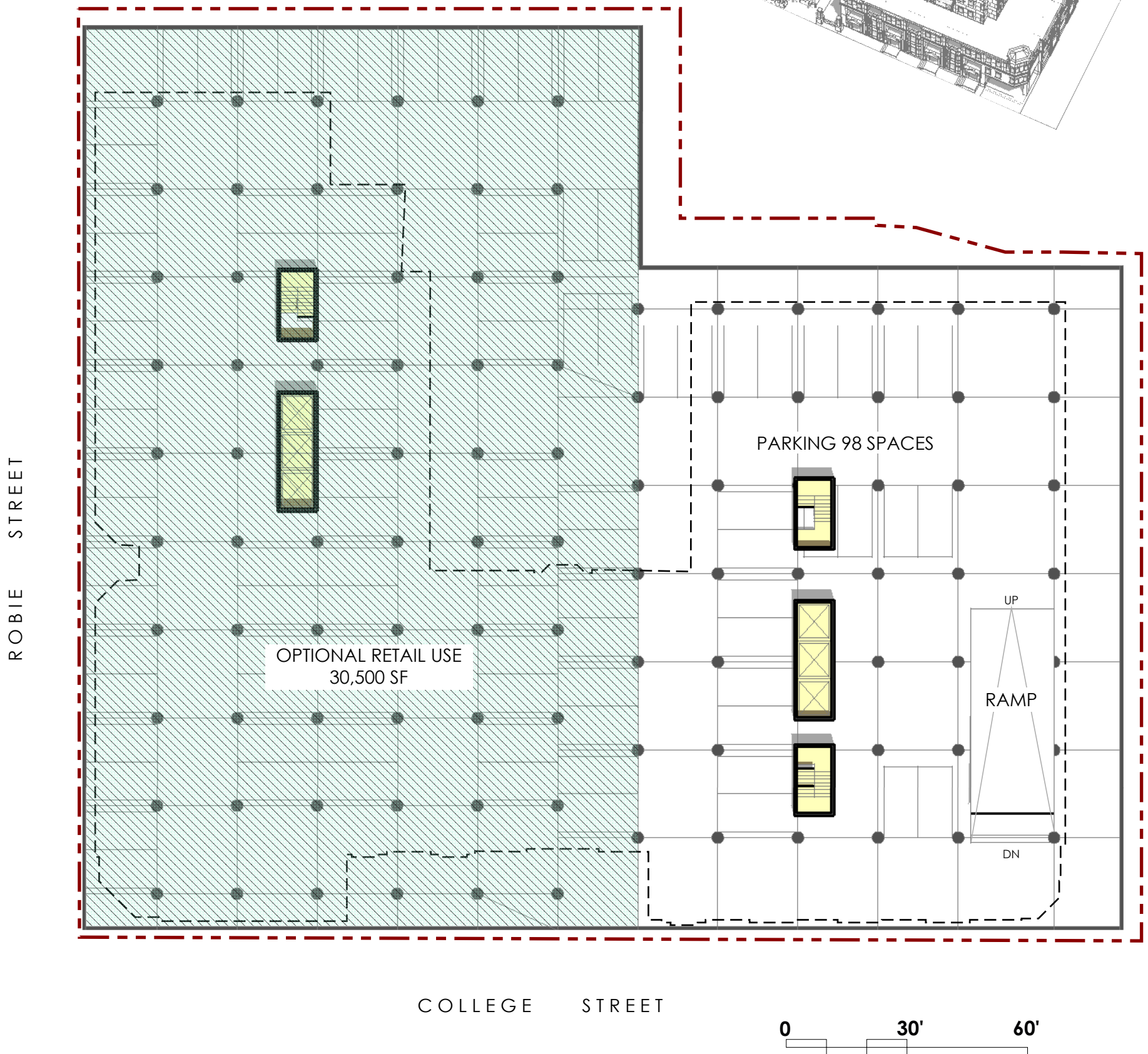
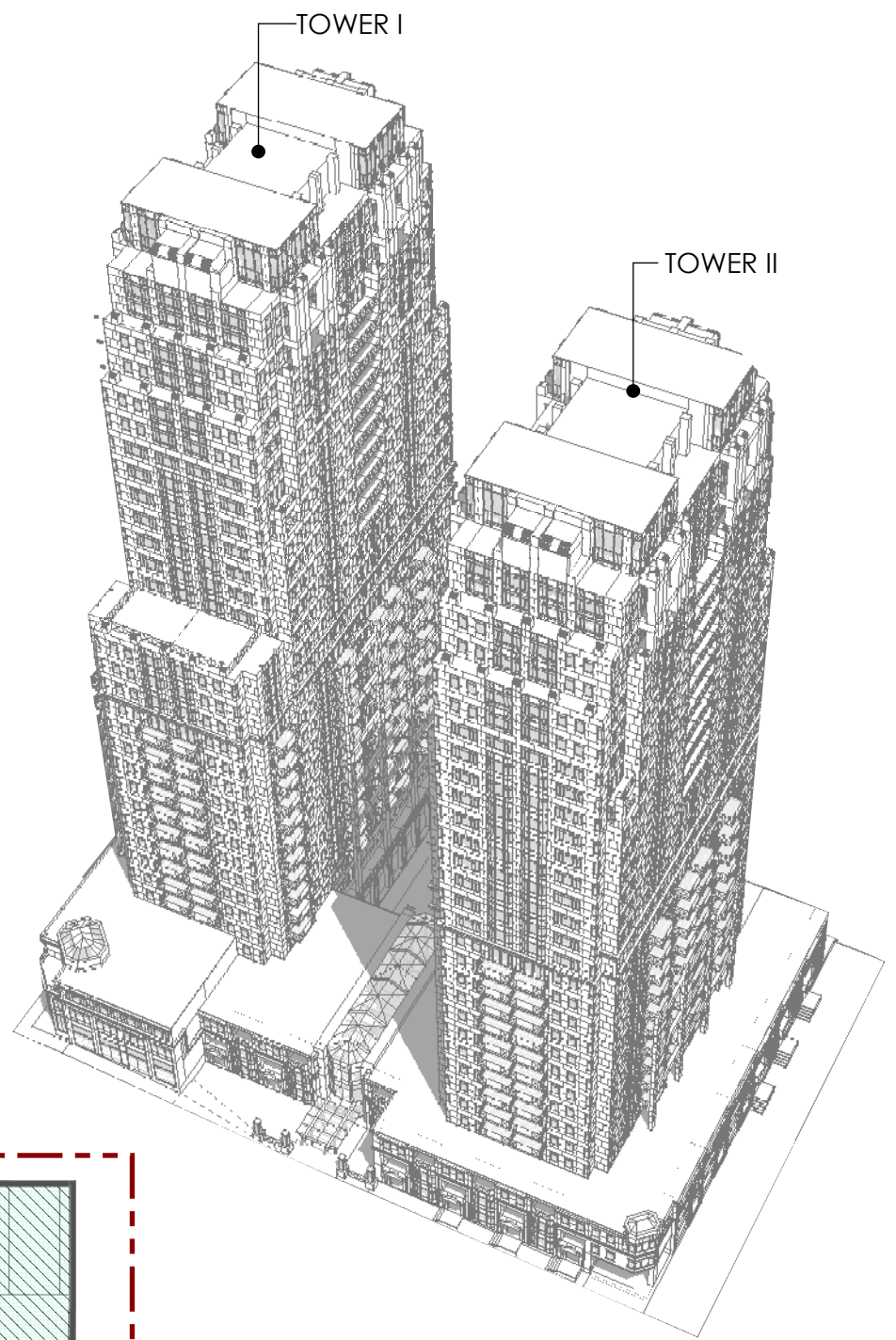
The Promenade

Halifax, NS

PHASE 2 FLOOR LAYOUT LVL G

A10

ISSUED FOR REVIEW
DATE: May 11, 2020



Zwicker
Zareski
architecture +
planning

1 Canal Street, Dartmouth, NS B2Y 2W1 | ZZap.ca

The Promenade
Halifax, NS

PHASE 2 FLOOR LAYOUT LVL P1

A11

ISSUED FOR REVIEW
DATE: May 11, 2020



Zwicker
Zareski
architecture +
planning

1 Canal Street, Dartmouth, NS B2Y 2W1 | Zzap.ca

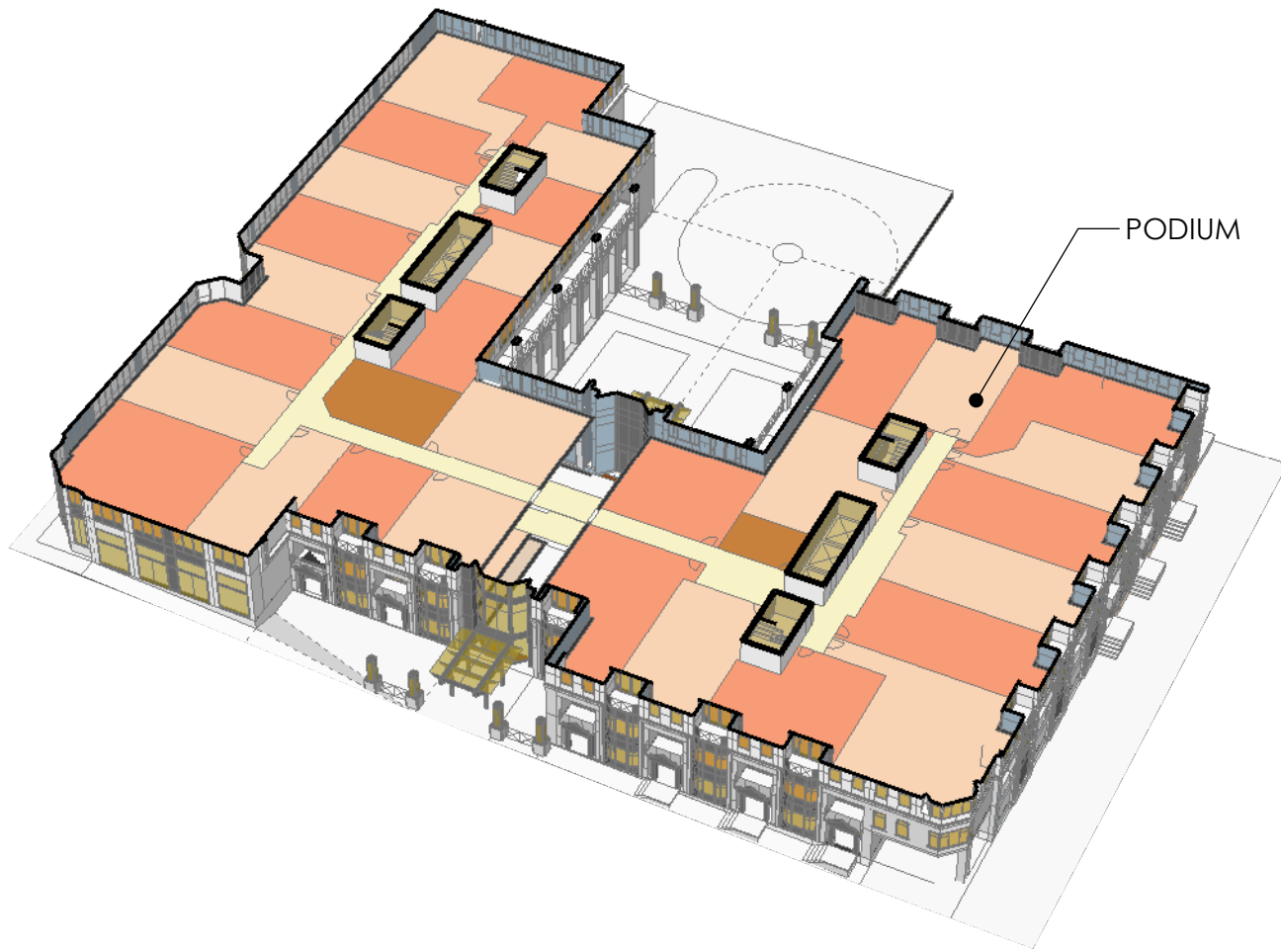
The Promenade

Halifax, NS

PHASE 2 FLOOR LVL MEZZ

A12

ISSUED FOR REVIEW
DATE: May 11, 2020



Zwicker
Zareski
architecture +
planning

1 Canal Street, Dartmouth, NS B2Y 2W1 | Zzap.ca

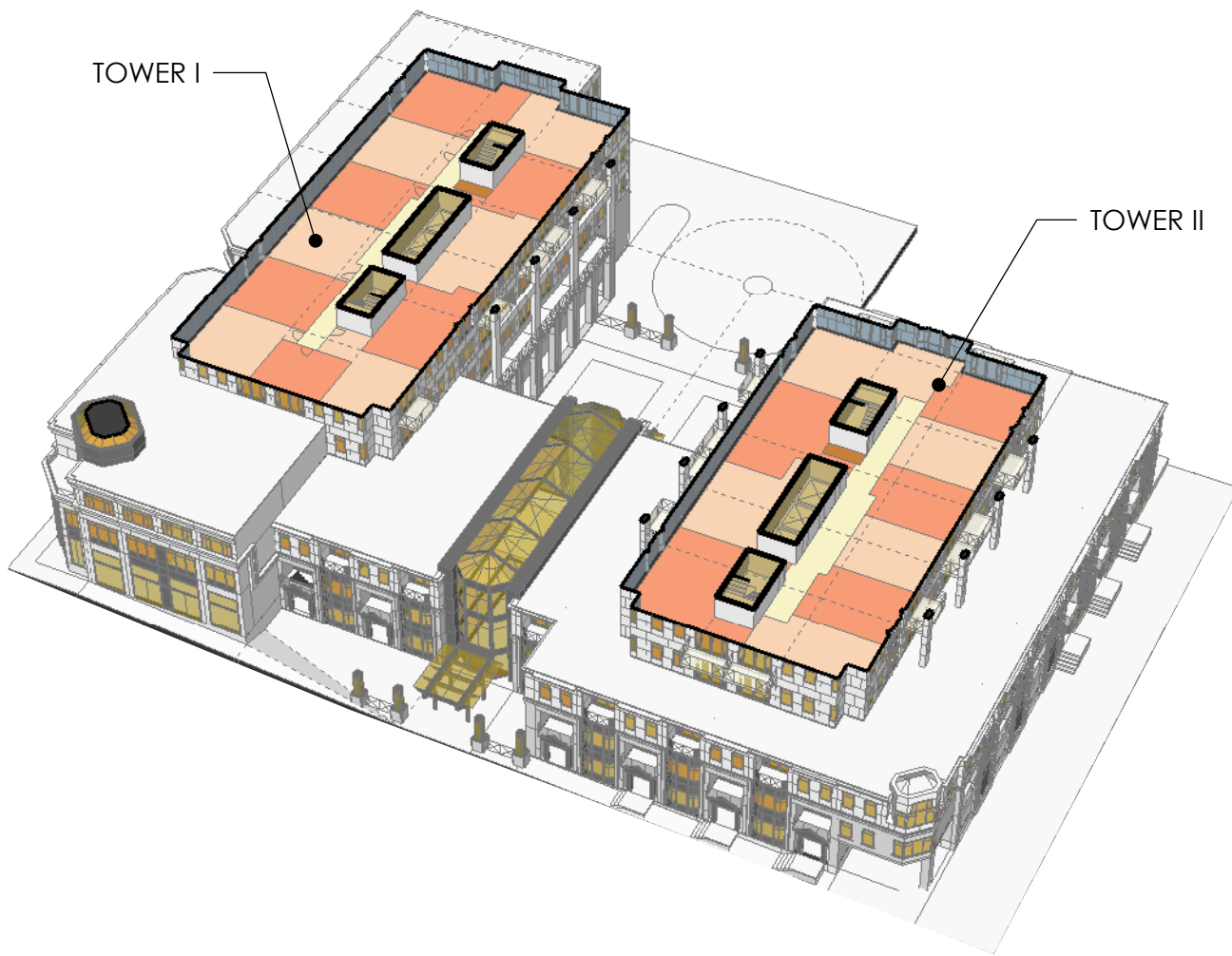
The Promenade

Halifax, NS

PHASE 2 FLOOR LAYOUT LVL 2

A13

ISSUED FOR REVIEW
DATE: May 11, 2020



Zwicker
Zareski
architecture +
planning

1 Canal Street, Dartmouth, NS B2Y 2W1 | Zzap.ca

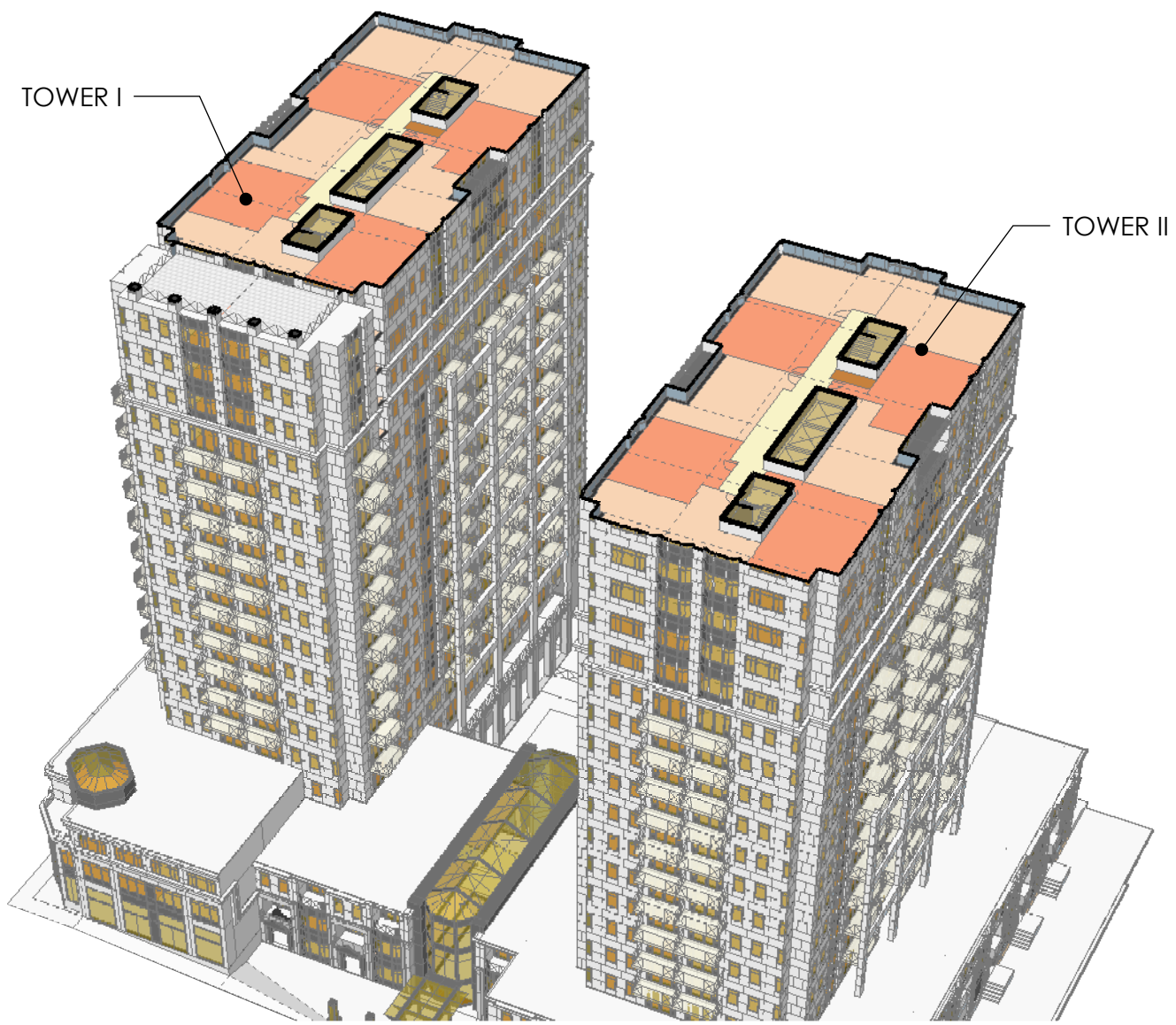
The Promenade

Halifax, NS

PHASE 2 FLOOR LAYOUT LVL 4

A14

ISSUED FOR REVIEW
DATE: May 11, 2020



Zwicker
Zareski
architecture +
planning

1 Canal Street, Dartmouth, NS B2Y 2W1 | Zzap.ca

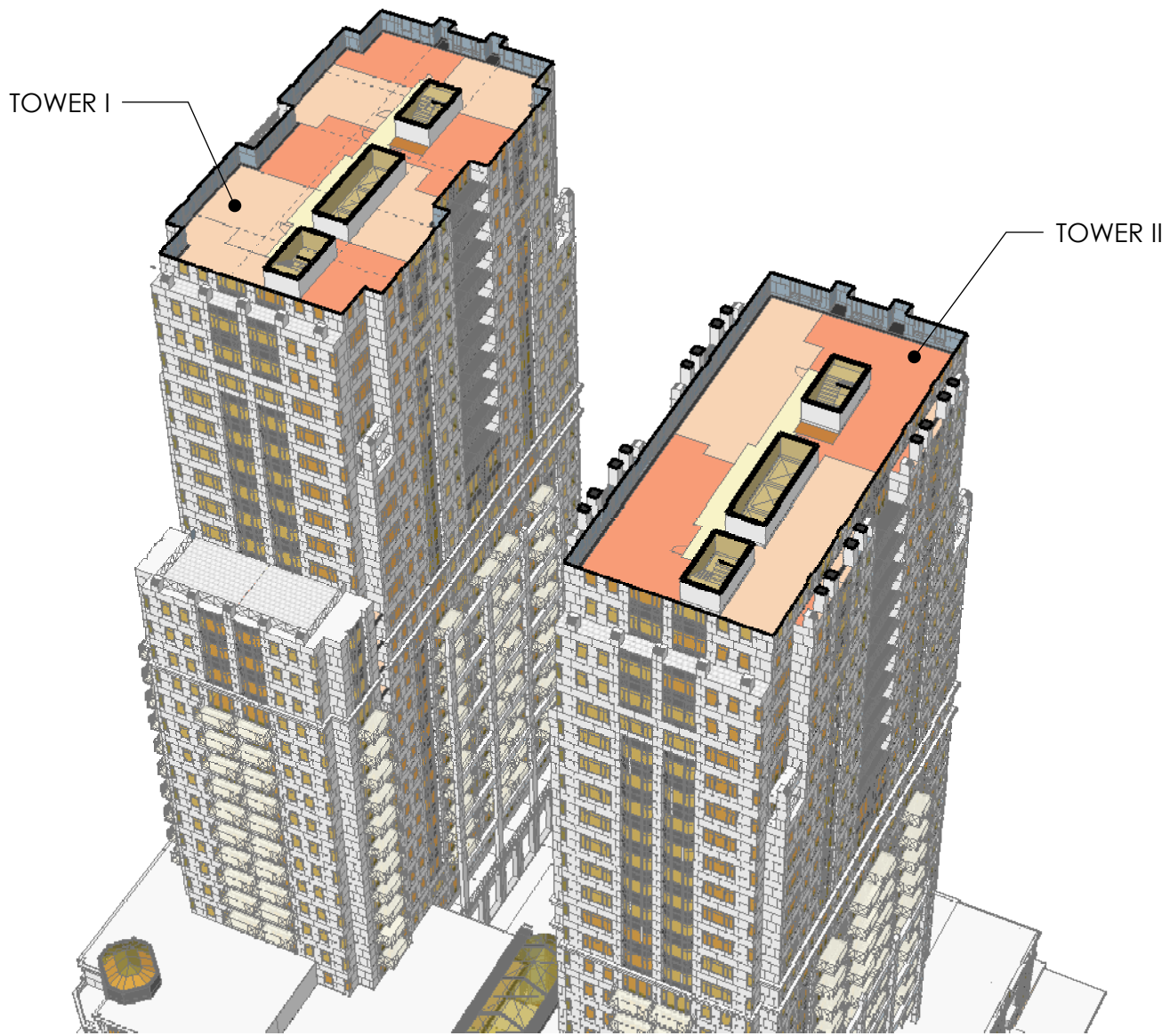
The Promenade

Halifax, NS

PHASE 2 FLOOR LAYOUT LVL 18

A15

ISSUED FOR REVIEW
DATE: May 11, 2020



Zwicker
Zareski
architecture +
planning

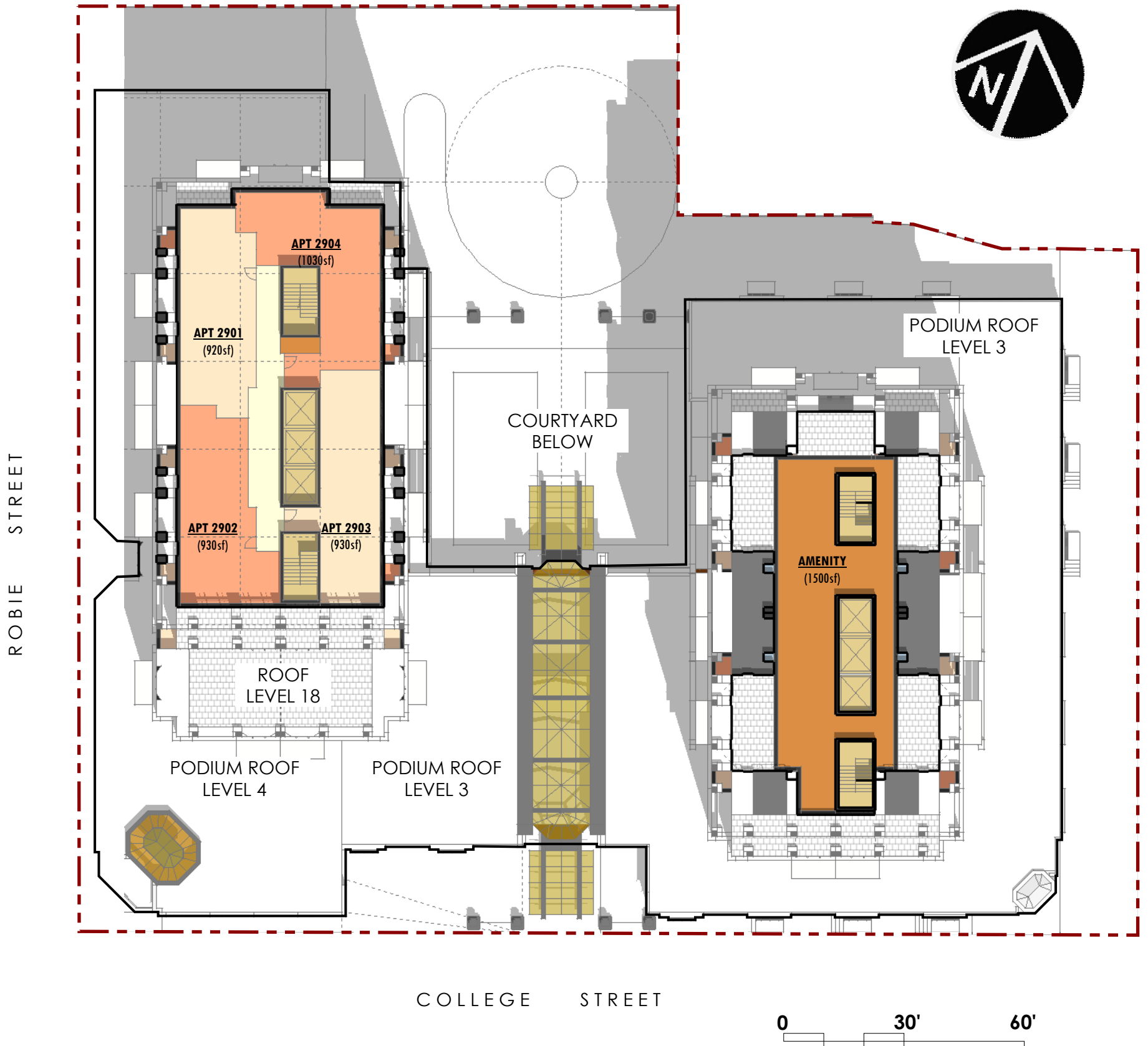
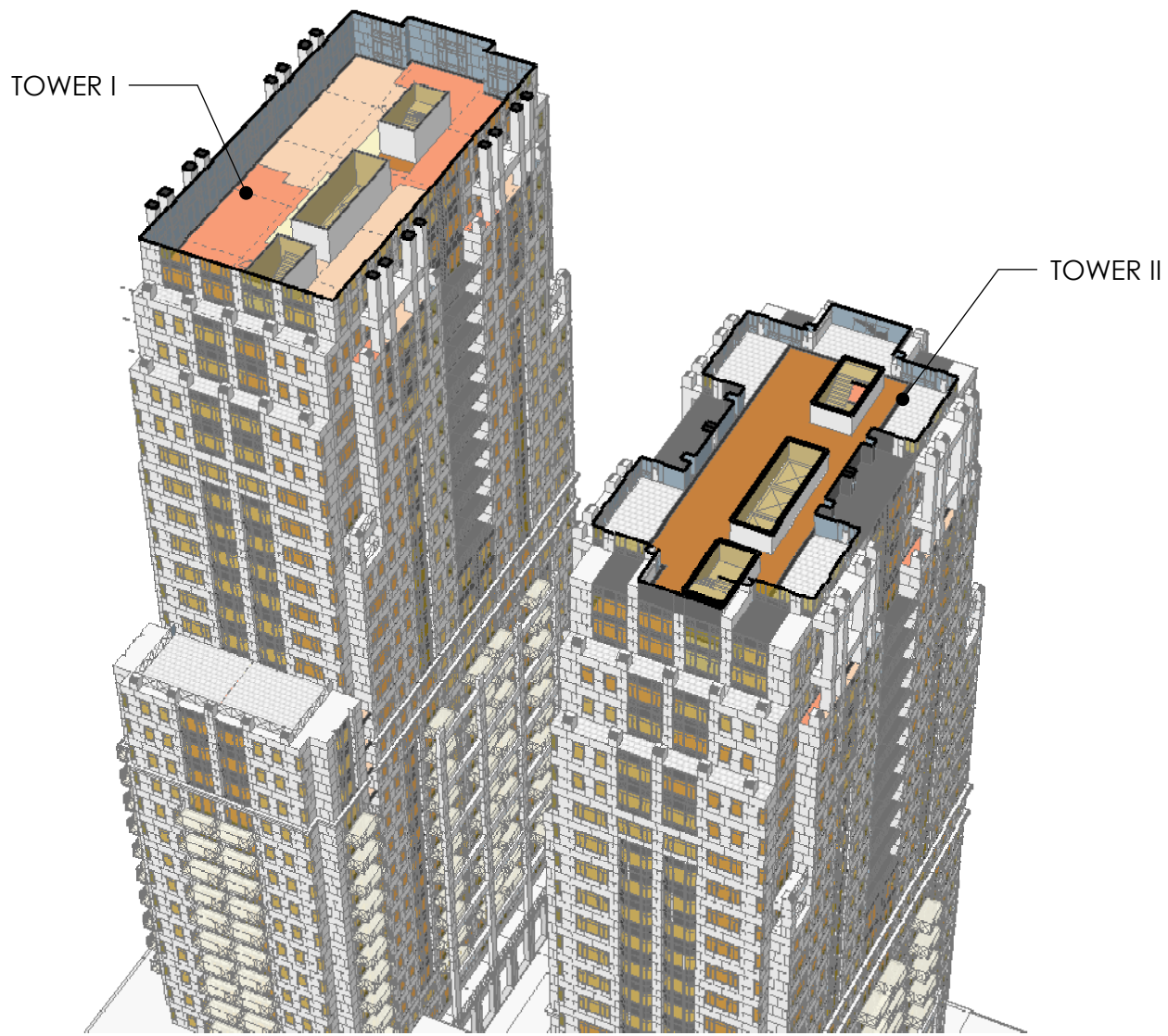
1 Canal Street, Dartmouth, NS B2Y 2W1 | Zzap.ca

The Promenade
Halifax, NS

PHASE 2 FLOOR LAYOUT LVL 27

A16

ISSUED FOR REVIEW
DATE: May 11, 2020



Zwicker
Zareski
architecture +
planning

1 Canal Street, Dartmouth, NS B2Y 2W1 | ZZap.ca

The Promenade

Halifax, NS

PHASE 2 FLOOR LAYOUT LVL 29

A17

ISSUED FOR REVIEW
DATE: May 11, 2020