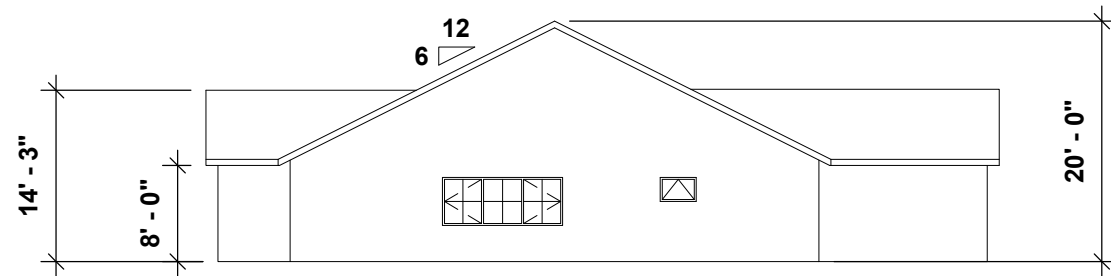


**1**  
**TYPICAL FRONT ELEVATION**  
**A-103**

**ISSUED FOR APPLICATION ONLY  
NOT FOR CONSTRUCTION**

**TYPICAL EXTERIOR FINISHES**  
**FRONT ELEVATION**  
 SIDING - FACE BRICK  
 WINDOW - VINYL  
 DOORS - WOOD STORMS OVER STEEL ENTRY  
 SHINGLES - ASPHALT  
  
**SIDE AND REAR ELEVATIONS**  
 SIDING - VINYL  
 WINDOW - VINYL  
 SHINGLES - ASPHALT  
  
**DRIVE WAYS - ASPHALT**



**2**  
**TYPICAL SIDE ELEVATION**  
**A-103**

**NOT FOR CONSTRUCTION.  
FOR REVIEW ONLY**

**JOST ARCHITECTS LTD.**  
 240 ST. GEORGE ST. BOX 458 ANNAPOLIS ROYAL, N.S.  
 P: (902) 532-2395 F: (902) 532-7707  
 Email: info@jost.ca

General Notes

- Contractor must verify all drawings with on-site conditions, reporting any discrepancy to Architect before proceeding with work.
- Drawings are not to be used for construction until signed by the Architect.
- Drawings are not to be scaled.
- All work is to comply with the current edition of the NBC and all applicable Codes and Bylaws.

Proj. Title: RE-ZONING WILSON LAKE DRIVE	Drawn By: SCY	Date: 04/01/16	Revised: 3
Location: WILSON LAKE DRIVE, SACKVILLE, NS	Scale: 1/16" = 1'-0"	Job No.: 1720	
Dwg. Title: TYPICAL UNIT ELEVATION	Checked By: --	Sht. No.: A-102	