

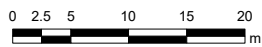
Required passageway: to extend and be open between Prince and Sackville Streets, with entrances aligned with Grafton Street.
 - minimum 7.6 m floor-to-ceiling height below building
 - minimum width of 13.6 m

Schedule 40: Publicly Sponsored Convention Centre

HALIFAX
 Regional Centre
 Land Use By-Law

PACKAGE B

HRM does not guarantee the accuracy of any base map representation on this plan.



Last Updated 2/25/2020