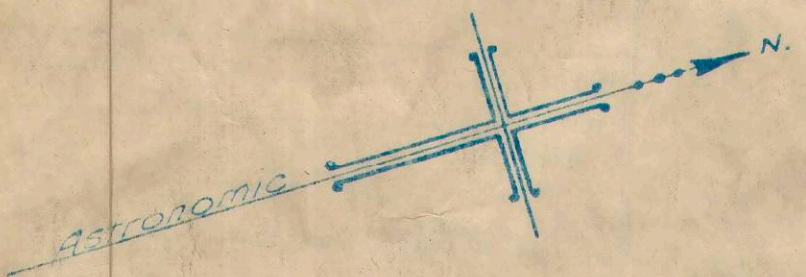


CITY OF HALIFAX.
COUNTY OF HALIFAX.
PROVINCE OF NOVA SCOTIA.

COMMISSIONER OF WORKS OFFICE
HALIFAX, N. S.

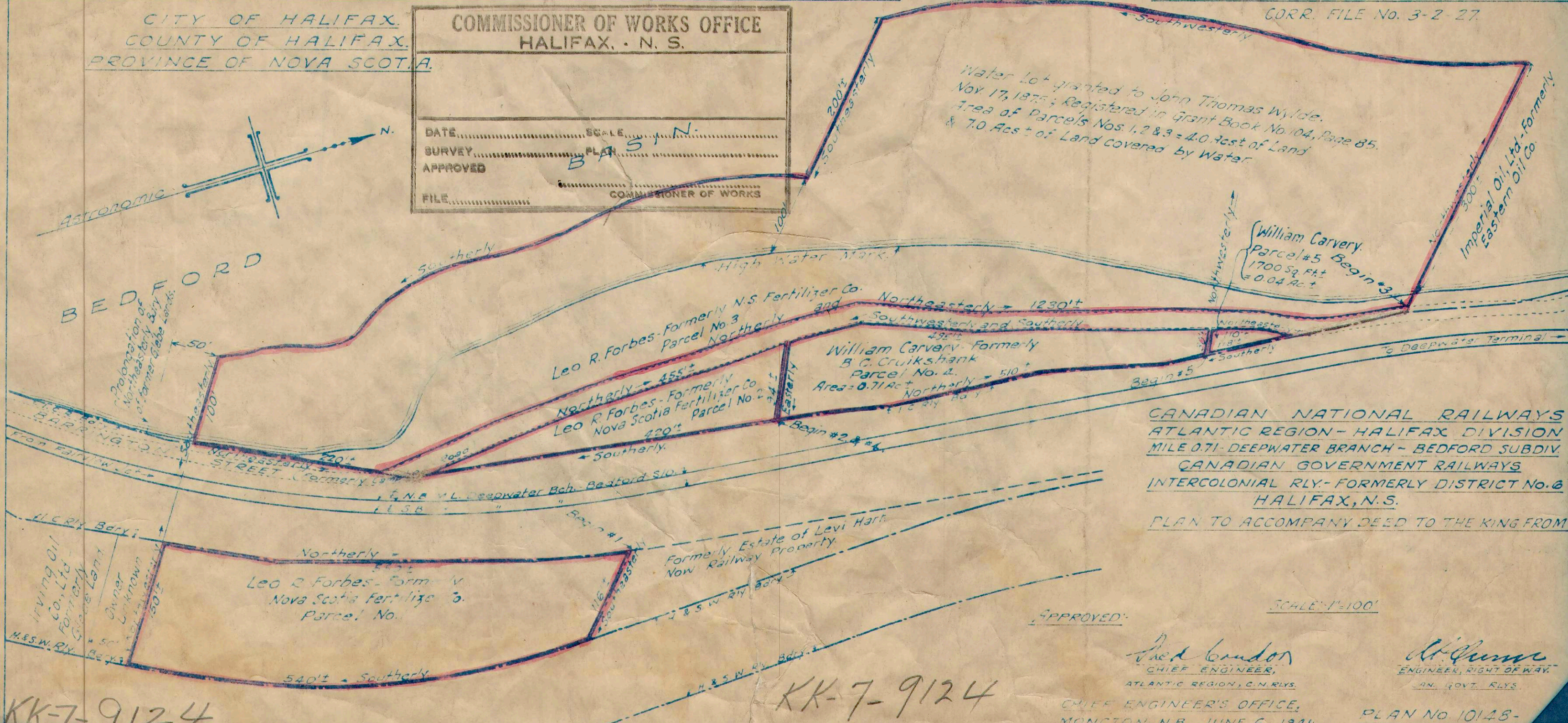
CORR. FILE No. 3-2-27.

DATE..... SCALE.....
SURVEY..... PLAN.....
APPROVED.....
FILE..... COMMISSIONER OF WORKS



Water Lot granted to John Thomas Wyld.
Nov. 17, 1875; Registered in Grant Book No. 104, Page 85.
Area of Parcels Nos. 1, 2 & 3 = 4.0 Ac.± of Land
& 7.0 Ac.± of Land covered by Water.

BEDFORD



CANADIAN NATIONAL RAILWAYS
ATLANTIC REGION - HALIFAX DIVISION
MILE 0.71 - DEEPWATER BRANCH - BEDFORD SUBDIV.
CANADIAN GOVERNMENT RAILWAYS
INTERCOLONIAL RLY. - FORMERLY DISTRICT No. 6
HALIFAX, N.S.
PLAN TO ACCOMPANY DEED TO THE KING FROM

SCALE: 1"=100'

APPROVED:

Fred Gordon
CHIEF ENGINEER,
ATLANTIC REGION, C.N. RLYS.

A. G. Curran
ENGINEER, RIGHT OF WAY,
CAN. GOVT. RLYS.

CHIEF ENGINEER'S OFFICE,
MONCTON, N.B., JUNE, 6, 1941. Rev. June 20, 1941.

PLAN No. 10148-

KK-7-9124

KK-7-9124