

**HALIFAX**

# Dutch Village Road Complete Streets

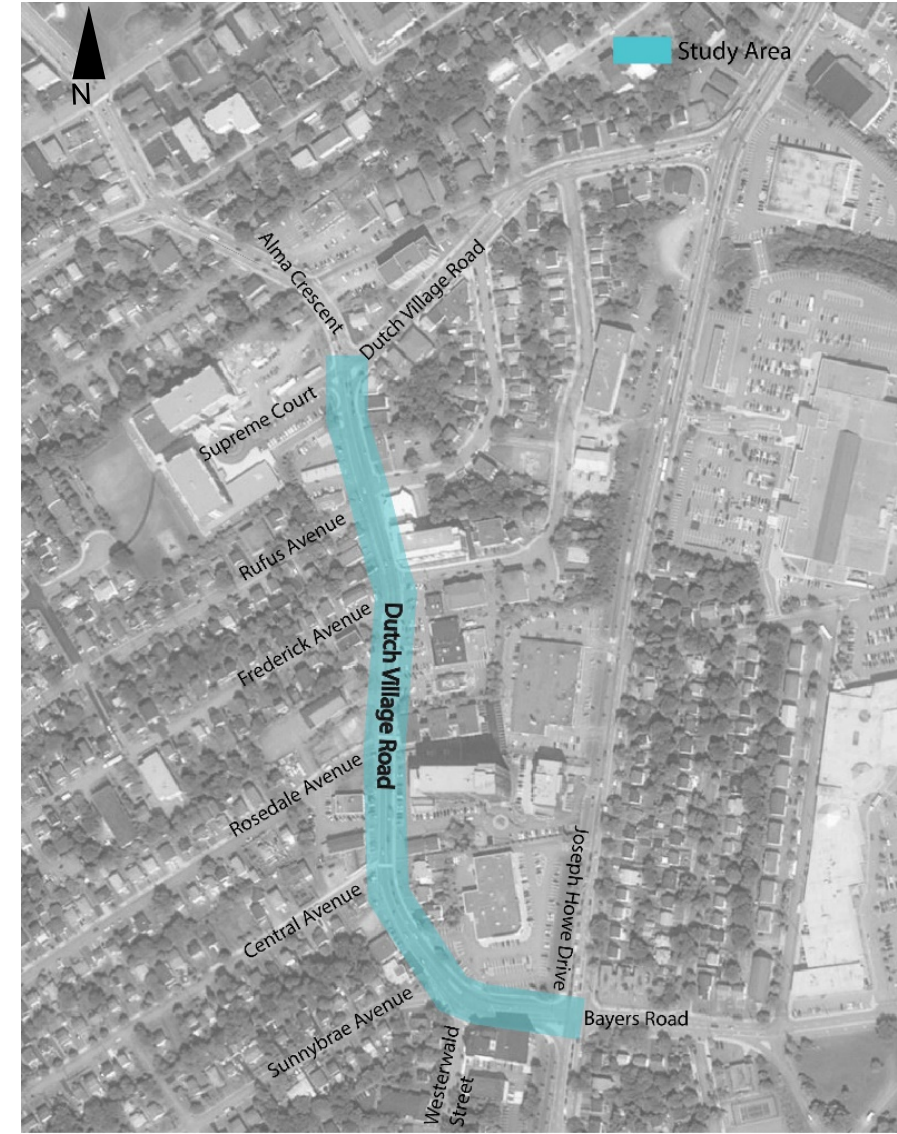


November 21, 2019



## Dutch Village Road: Background

- ~700m section connecting Joseph Howe Drive & Alma Crescent
- Functional Plan initially excluded the Bayers Road / Joseph Howe Drive & Alma Crescent / Supreme Court intersections



## Functional Planning



- Confirms vision of the corridor's function as a street and a place
- Understand and justify potential trade-offs
- Engagement with stakeholders early on in the process

## Dutch Village Road: Policy Direction



- IMP action A69 identifies DVR as a **Priority Sidewalk Connection**
- Active Transportation Priorities Plan identifies Dutch Village Road as a **Candidate Bicycle Route**
- Increased residential intensification enabled by recent **MPS and LUB amendments**

## Existing Conditions

- Daily traffic > 16,000 vpd
- West side:
  - No sidewalk
  - Uncontrolled access



- Street parking
  - Perpendicular
  - Encroaches on ROW
- 56 collisions over 3 years



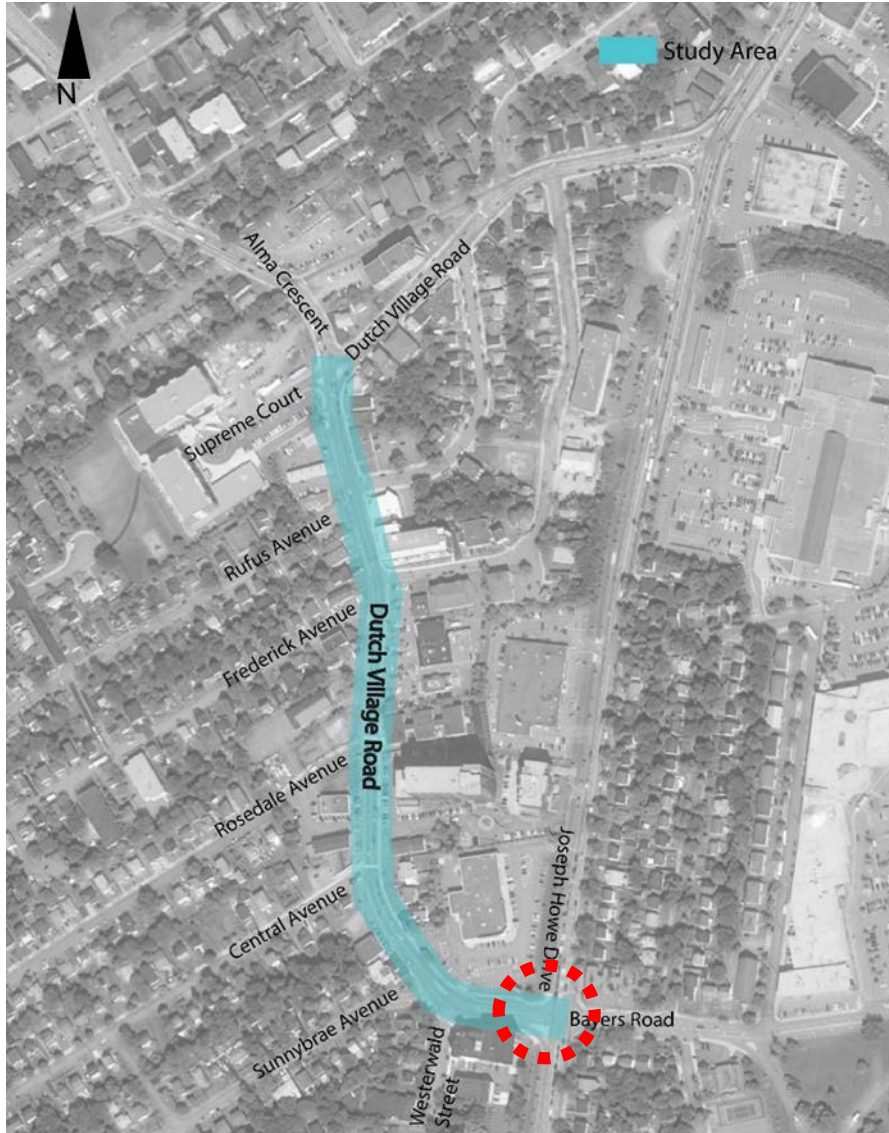
## Proposed Changes



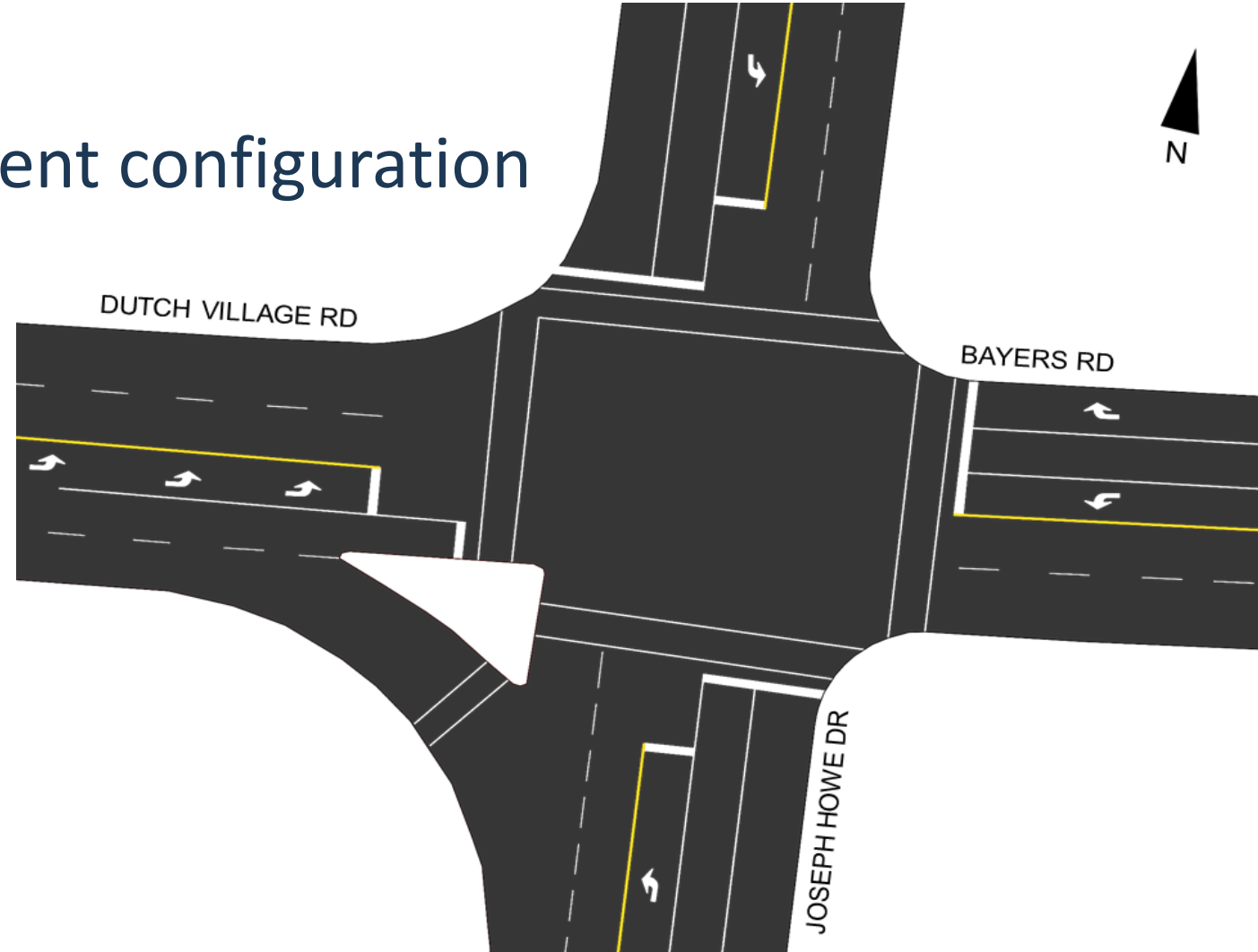
- Improved pedestrian realm - sidewalk & curb on both sides
- Raised protected bicycle lane on both sides of the street
- Potential space for amenities
- Improved access management by eliminating nose-in parking
- 30 on-street parallel parking spaces



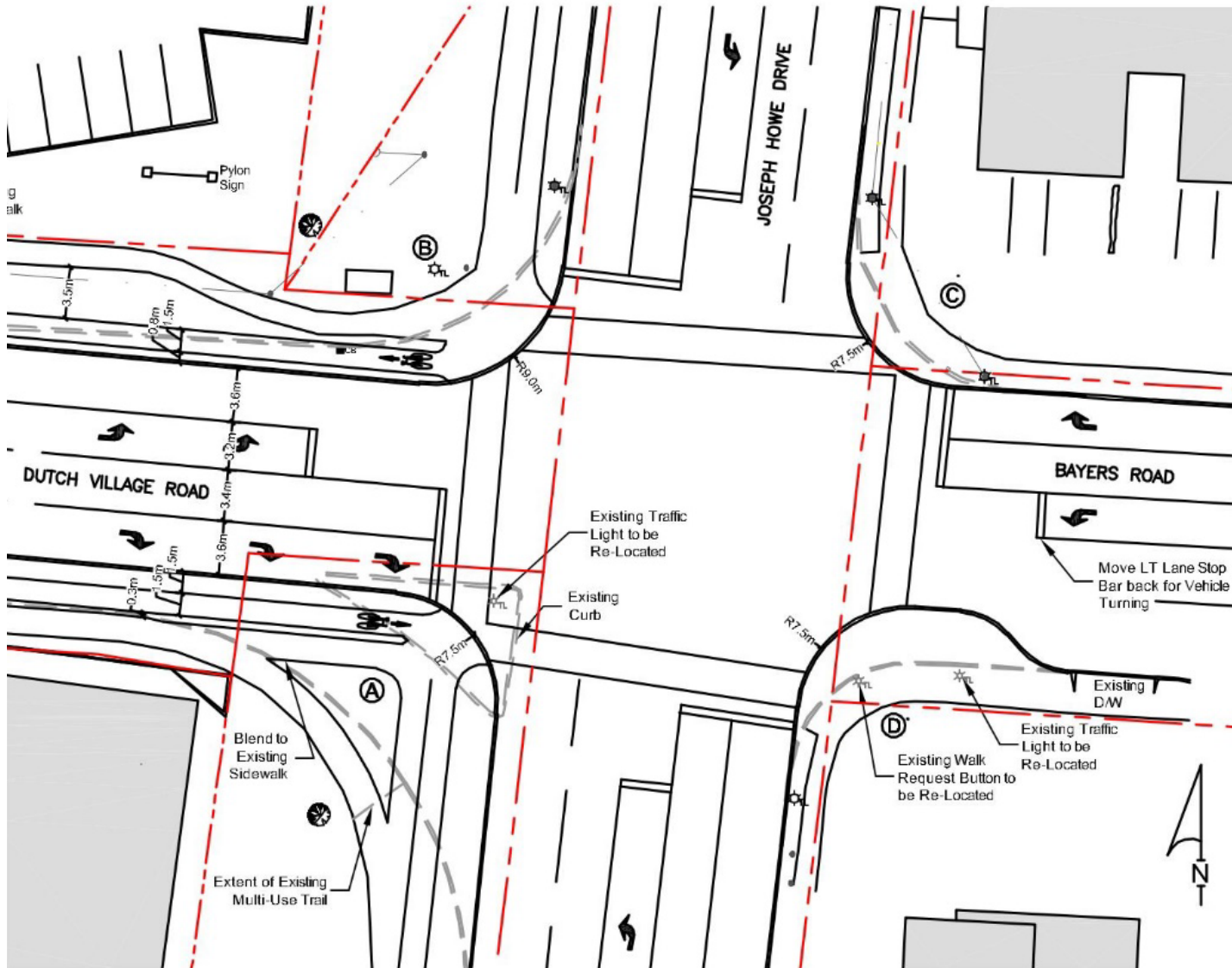
# Joseph Howe Dr/ Bayers Rd Intersection



## Current configuration



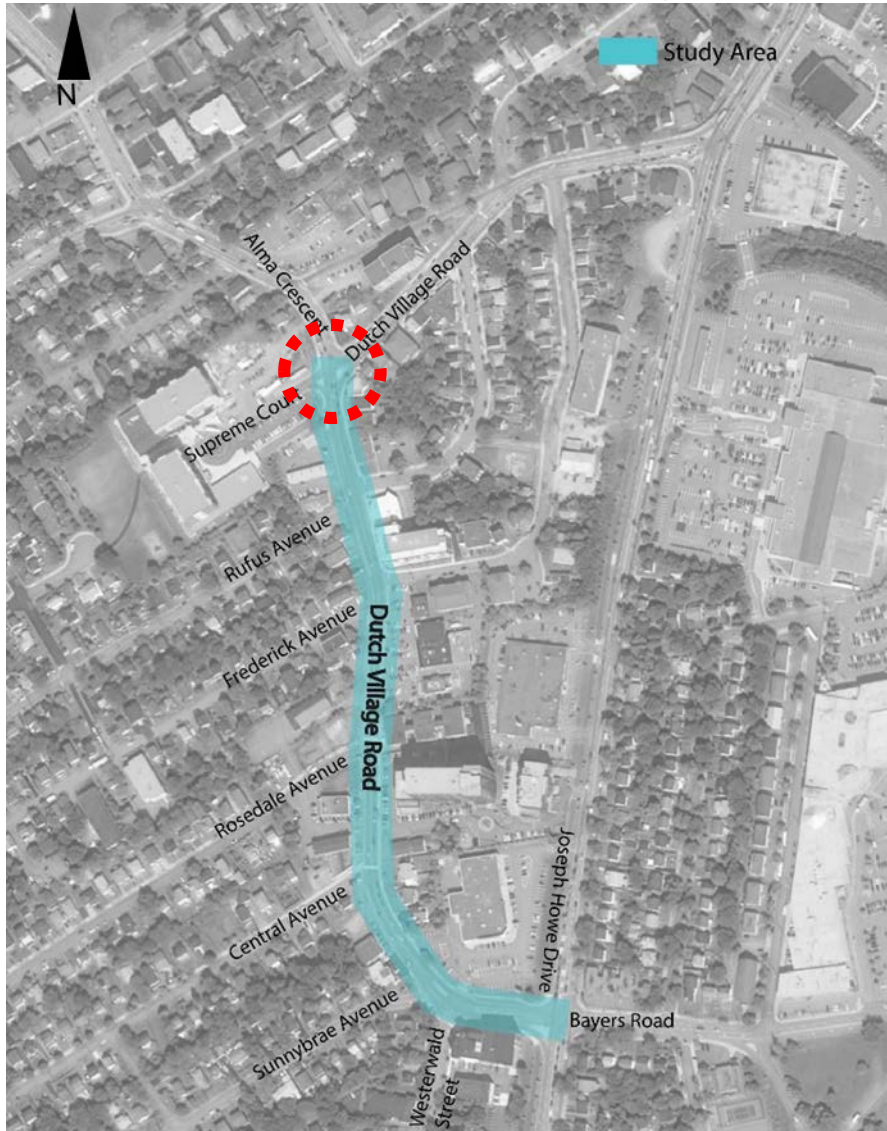
## Proposed Changes



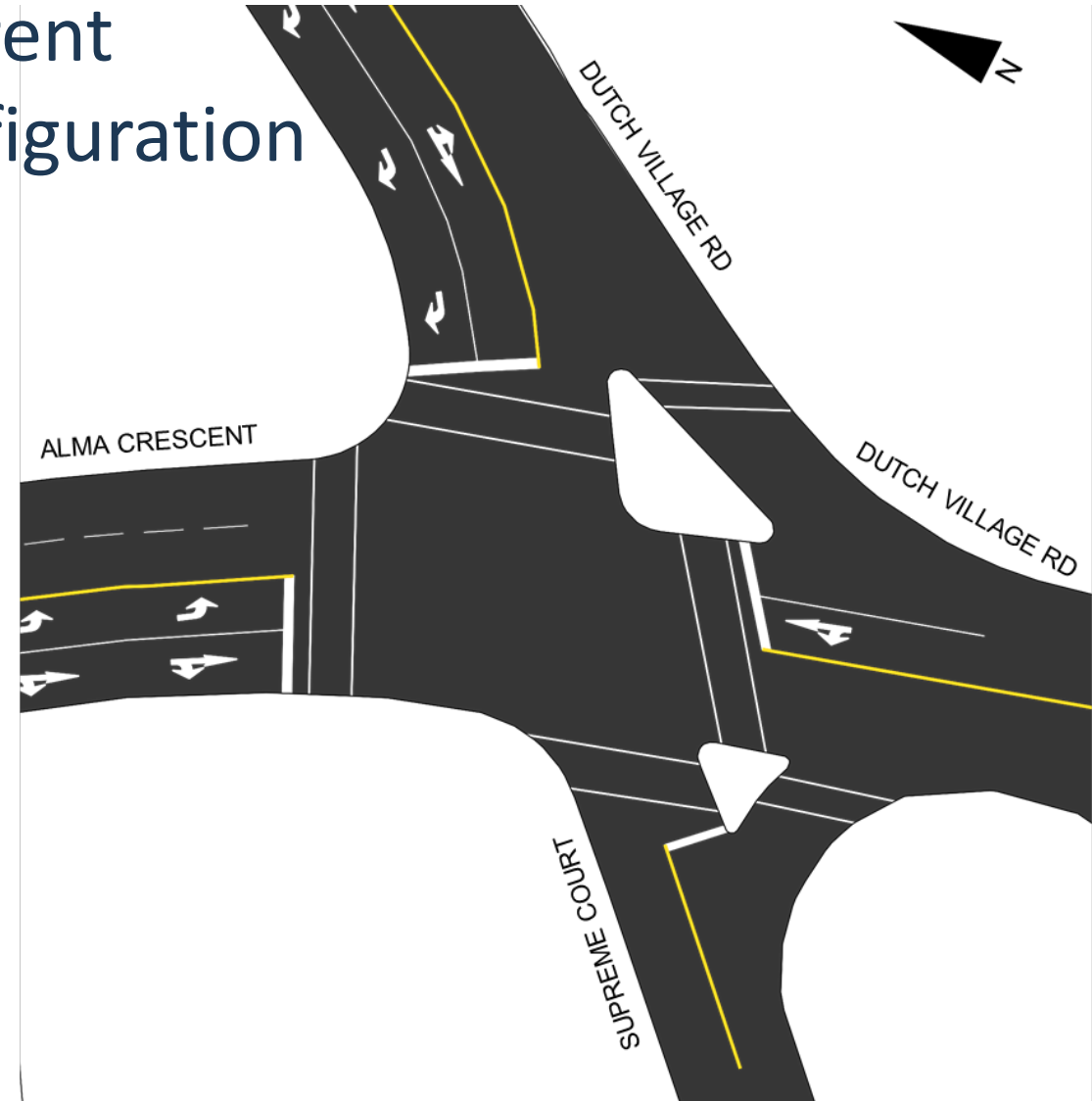
- A. Remove turn channel & extend eastbound bike lane to COLT
- B. Remove one receiving lane and begin westbound bike lane at Joseph Howe
- C. Reduce radius (future)
- D. Add bump-out (future)



## Alma Cres / Supreme Court Intersection

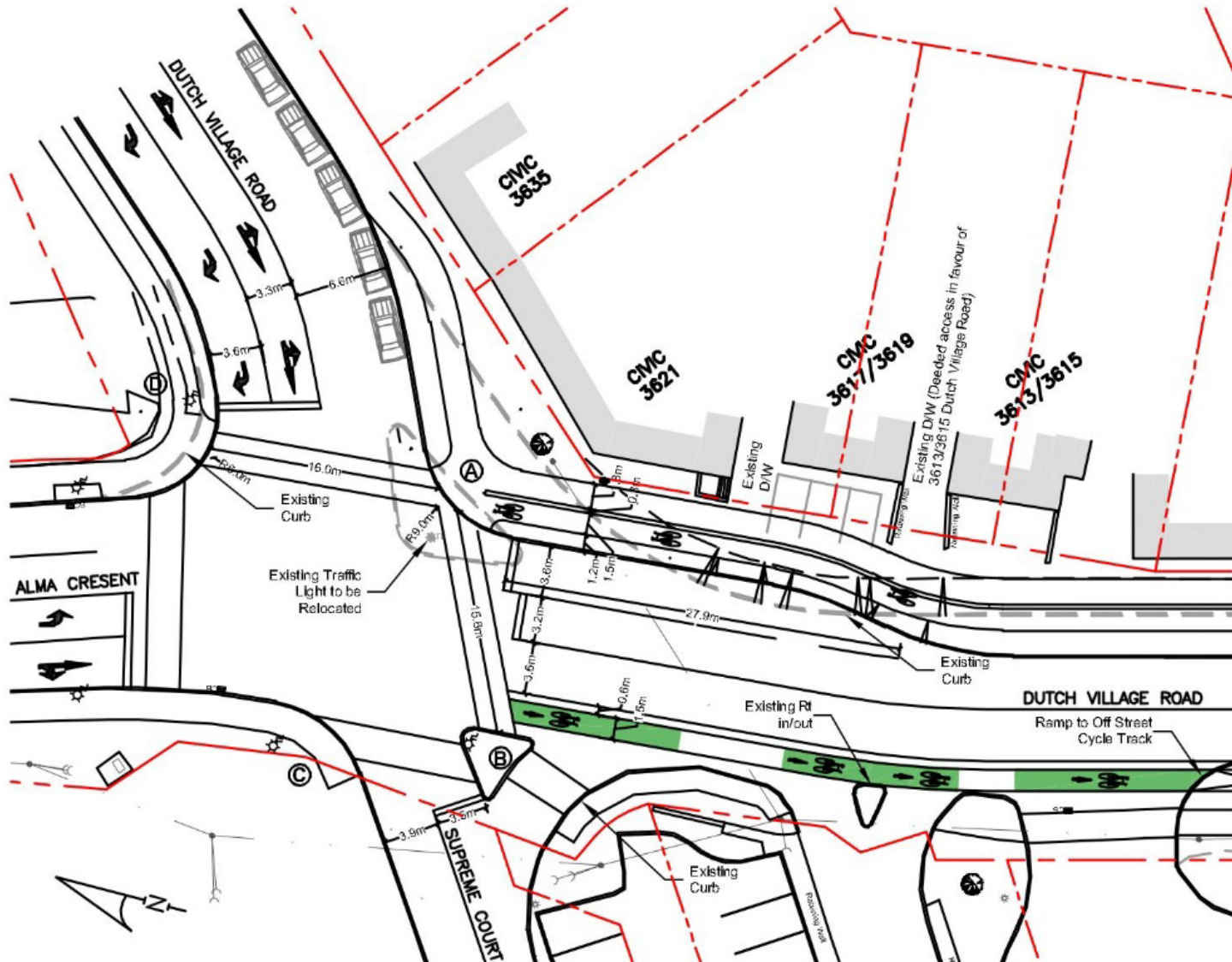


### Current configuration





## Proposed Changes



- A. Remove turn channel and extend northbound raised bike lane to intersection
- B. Install painted bike lane and transition to raised bike lane after driveways
- C. No change
- D. Reduce radius (future?)

## Next Steps



- Recommendation Report to TSC/ Council
- Property acquisition processes underway
- Detailed design in 2020/2021
- Construction in 2021/2022 (tentative)

