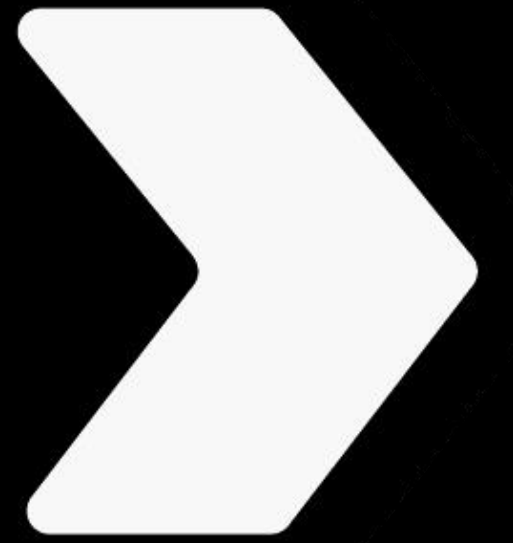


BUS STOP THEATRE CO·OP



***BUS STOP
THEATRE CO-OP***



sam

STRATEGIC ARTS
MANAGEMENT



Facility Study

Strategic Arts Management

Peter Henry **ARCHITECTS**

PECHAKUCHA

20 SLIDES X 20 SECONDS

BUS STOP
THEATRE CO-OP

Prince Arthur Street

NS Housing Trust DIAMOND Site

Dal Legal Aid

Pramana

Saltys

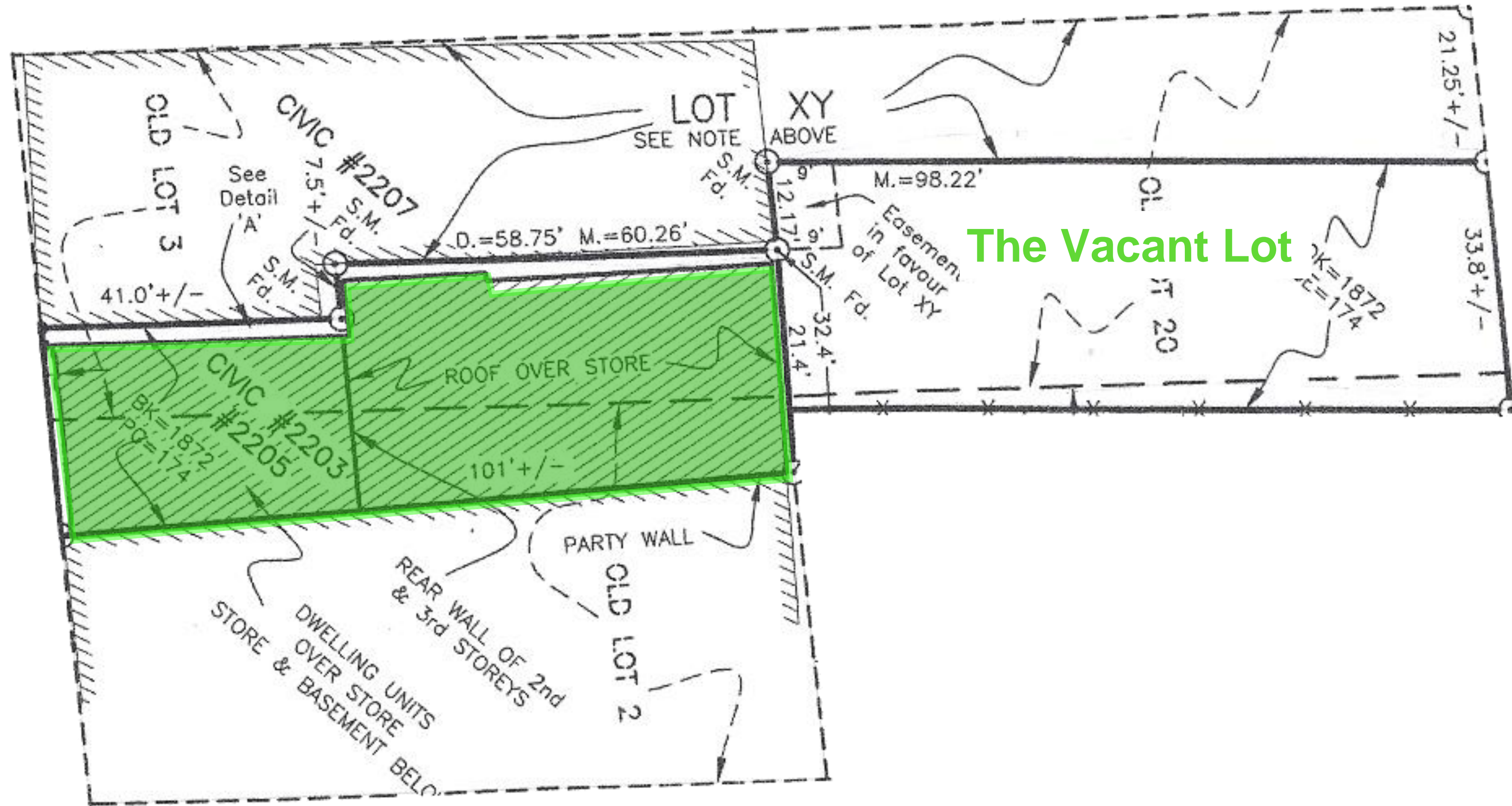
Alter Ego's

NS Housing Trust MET Site

Gottingen Street

Maitland Street Street

The Bus Stop today!



The Building

The Vacant Lot

Two sites, the built site on Gottingen and the vacant lot on Maitland



BUS STOP
THE ACRE CO-OP

PRELIMINARY
This set of drawings has been prepared for a design review meeting on September 17. Aspects of this and other drawings may be incomplete or uncoordinated.

Peter Henry
ARCHITECTS
3252 Veith Street
HALIFAX NS B3K 3H2 Canada
902.455.9884 voice
phArchitects@pealink.ca

sam
STRATEGIC ARTS
MANAGEMENT

Survey Plan
Scale: 1:100
0M 5M 10M

drawn ph
summer/autumn 2018
drawing number
A.01

The Ideas:

Public, Convivial, Urban, Flexible

Celebrate Old and New

One theatre, Two stages

Unique Theatrical Opportunities

Public, Convivial, Urban



Public, Convivial, Urban



Preserve (but restore) existing façade

Public, Convivial, Urban



or revise the façade

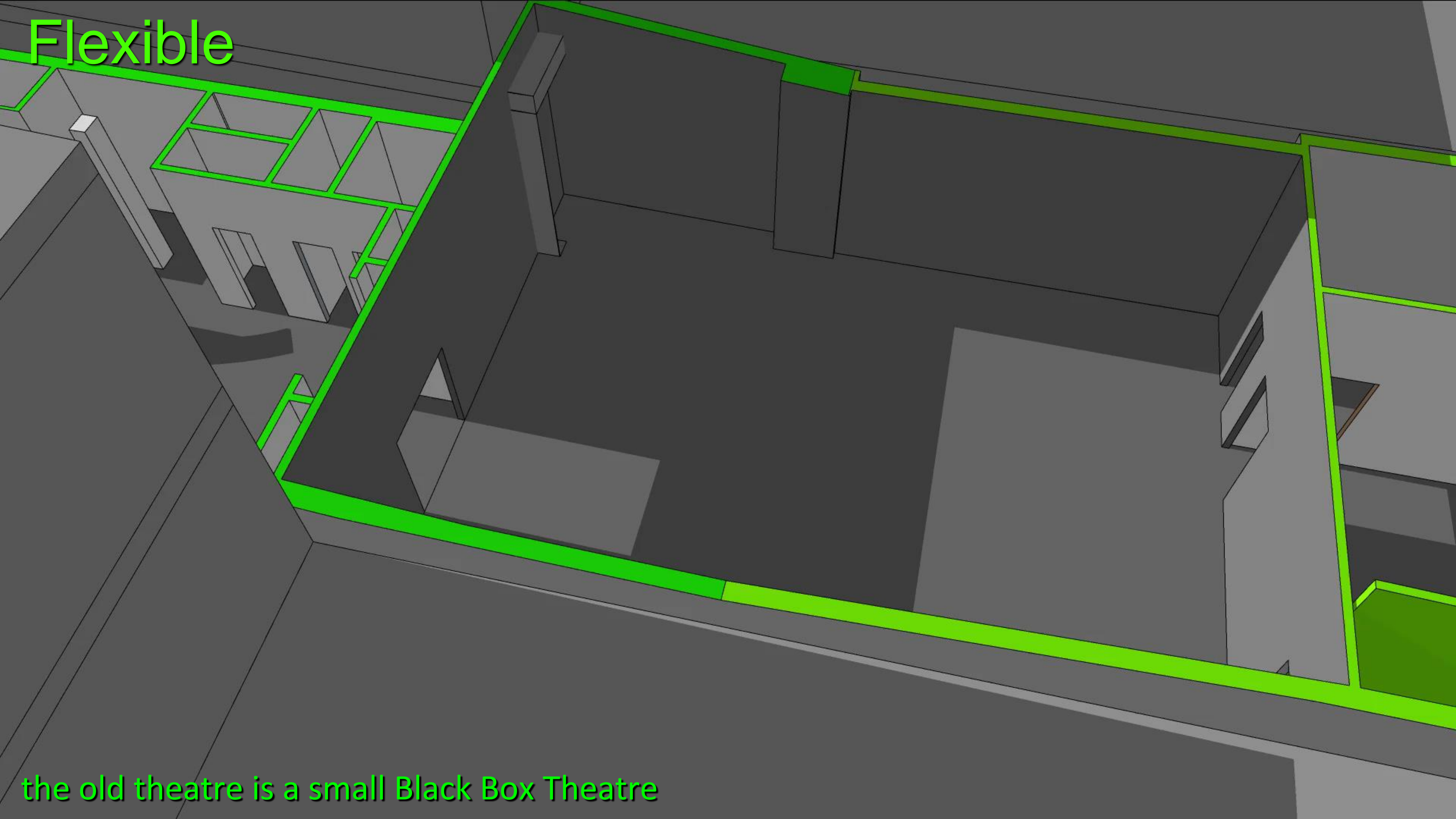
Flexible



Salt

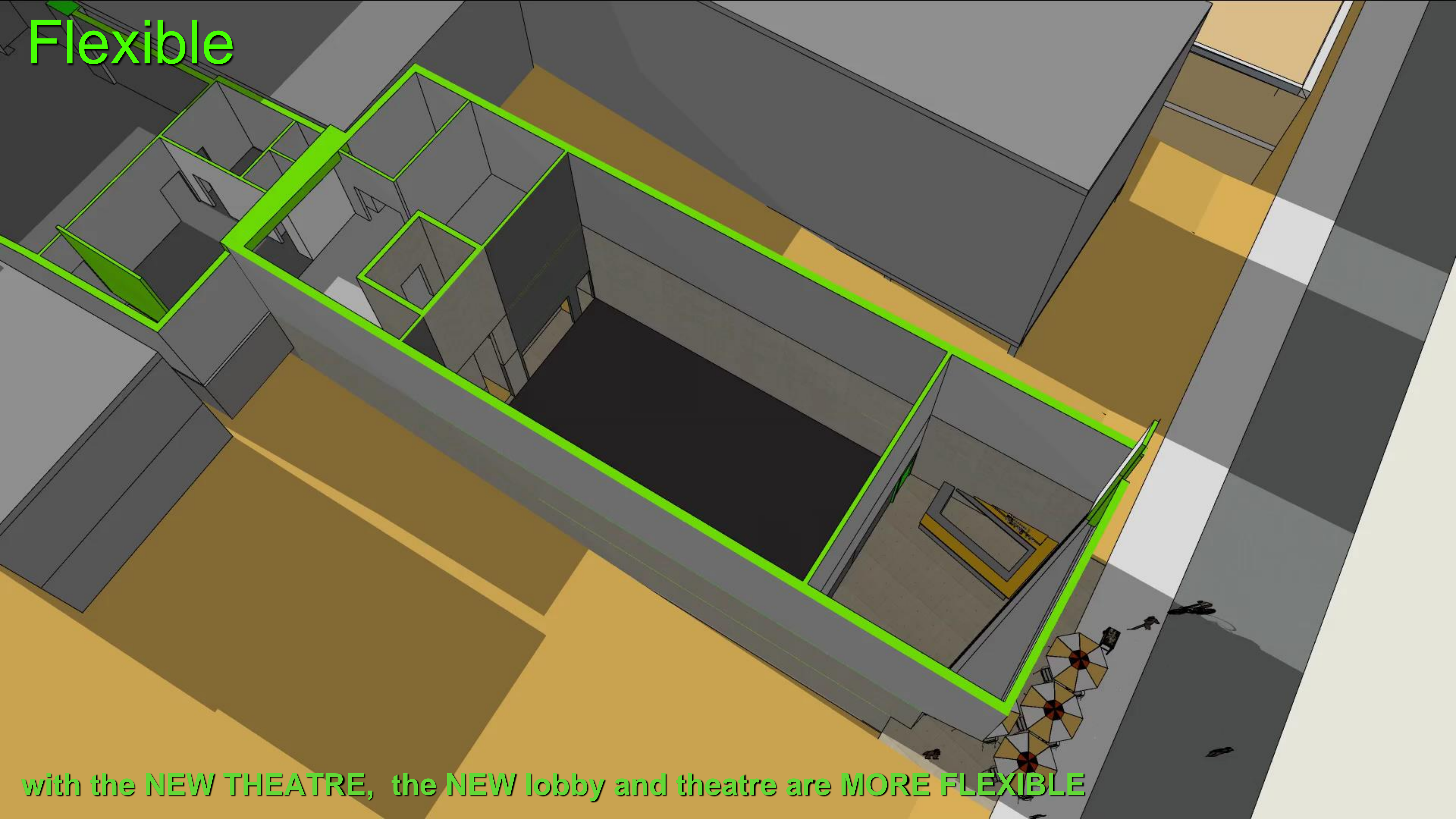
TODAY the lobby and the old theatre are used flexibly

Flexible

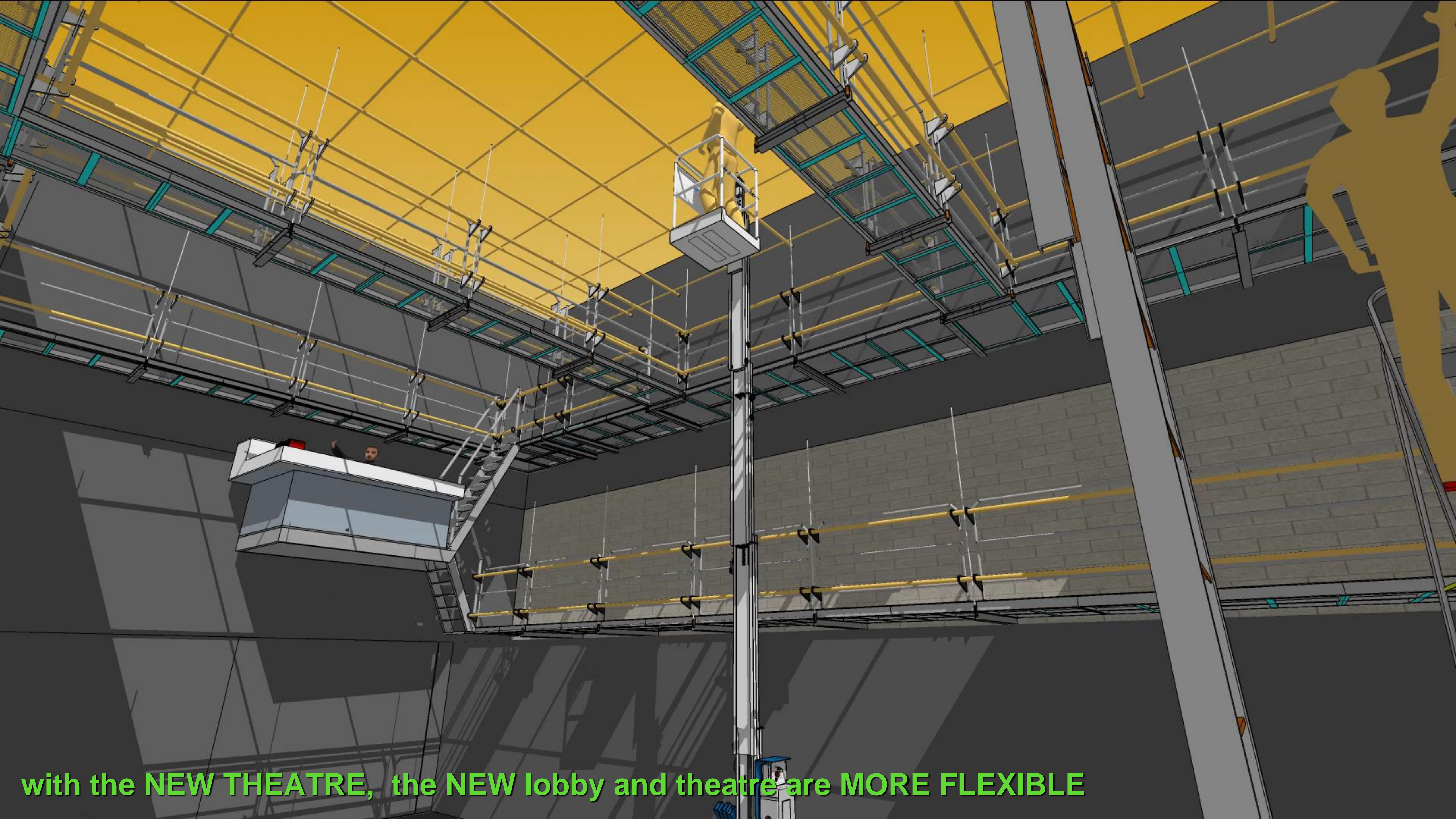


the old theatre is a small Black Box Theatre

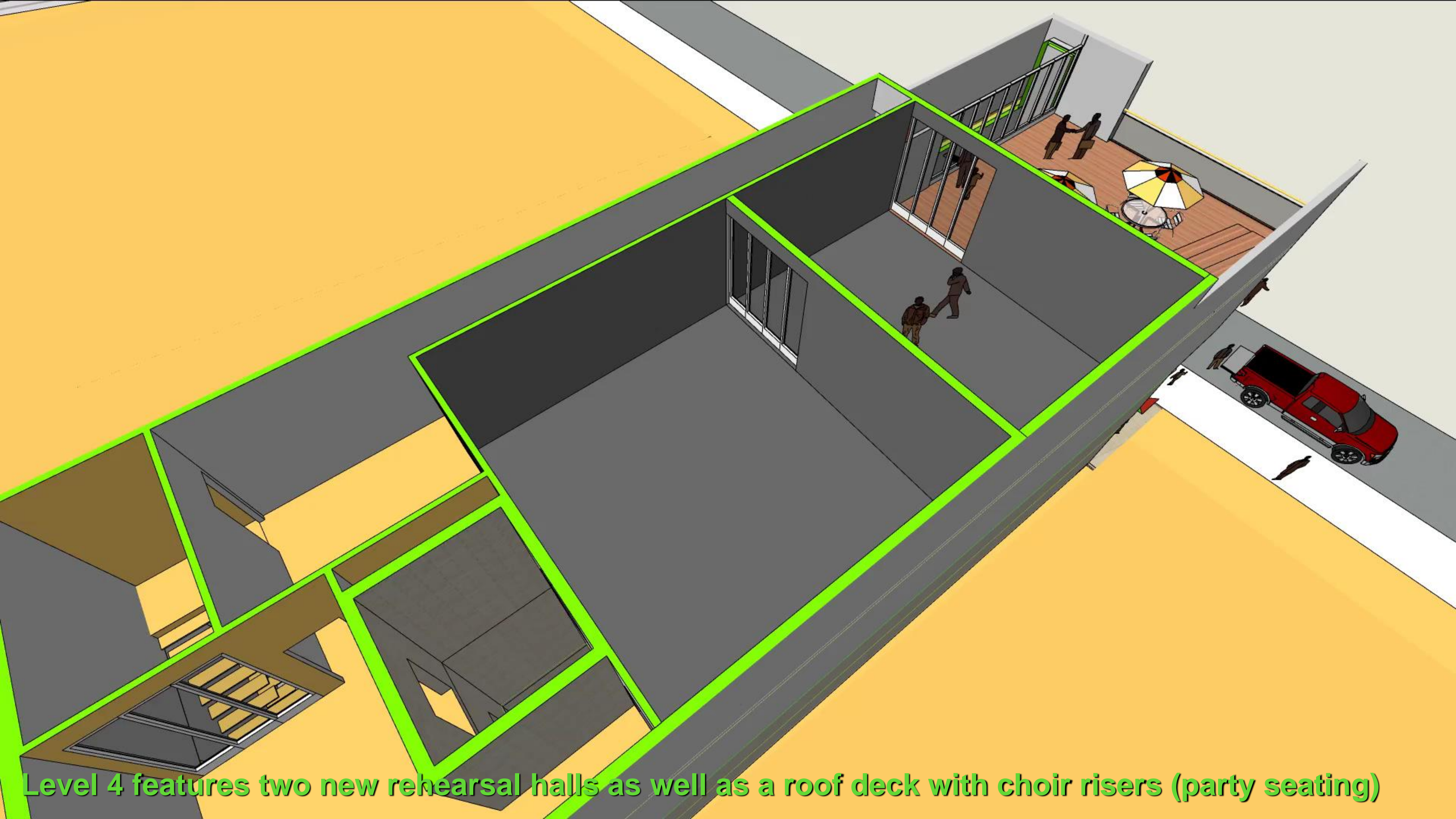
Flexible



with the NEW THEATRE, the NEW lobby and theatre are MORE FLEXIBLE

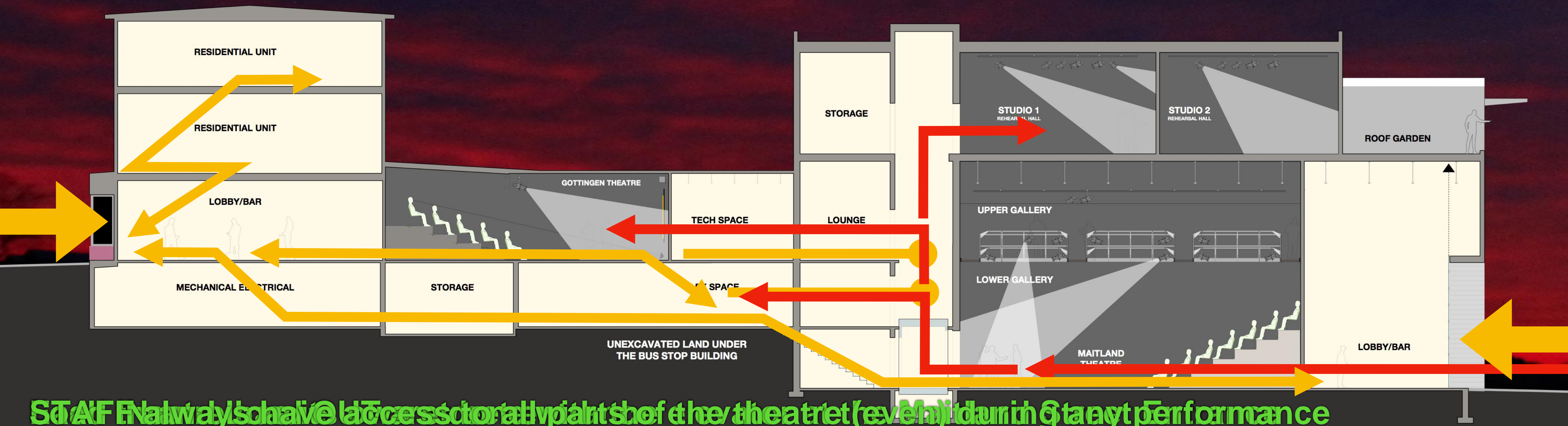


with the **NEW THEATRE**, the **NEW lobby and theatre** are **MORE FLEXIBLE**



Level 4 features two new rehearsal halls as well as a roof deck with choir risers (party seating)

One theatre, Two stages

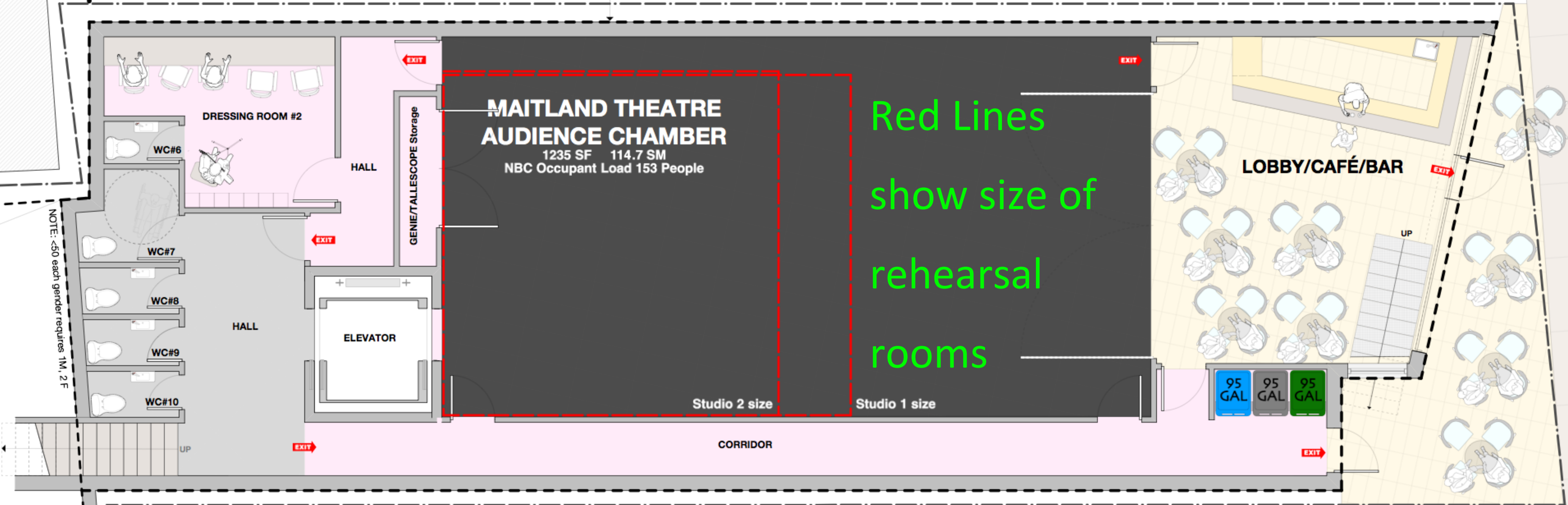


STAFF ONLY ACCESS TO ALL PLANTS OF THE THEATRE (EVEN) DURING ANY PERFORMANCE

Level 1: Maitland Theatre

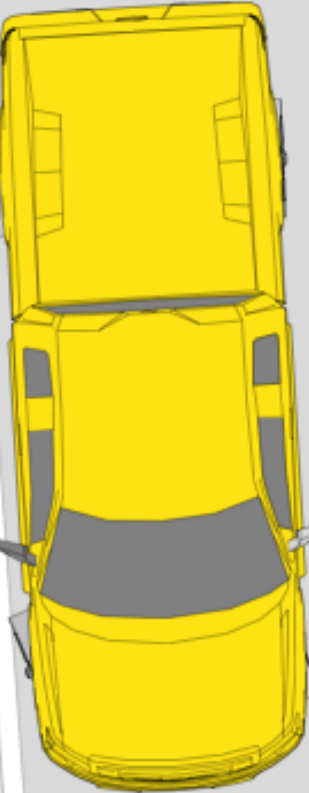
← PHASE 2 | PHASE 1 →

Gross Floor Area 2904 SF



NOTE: <50 each gender requires 1M, 2 F

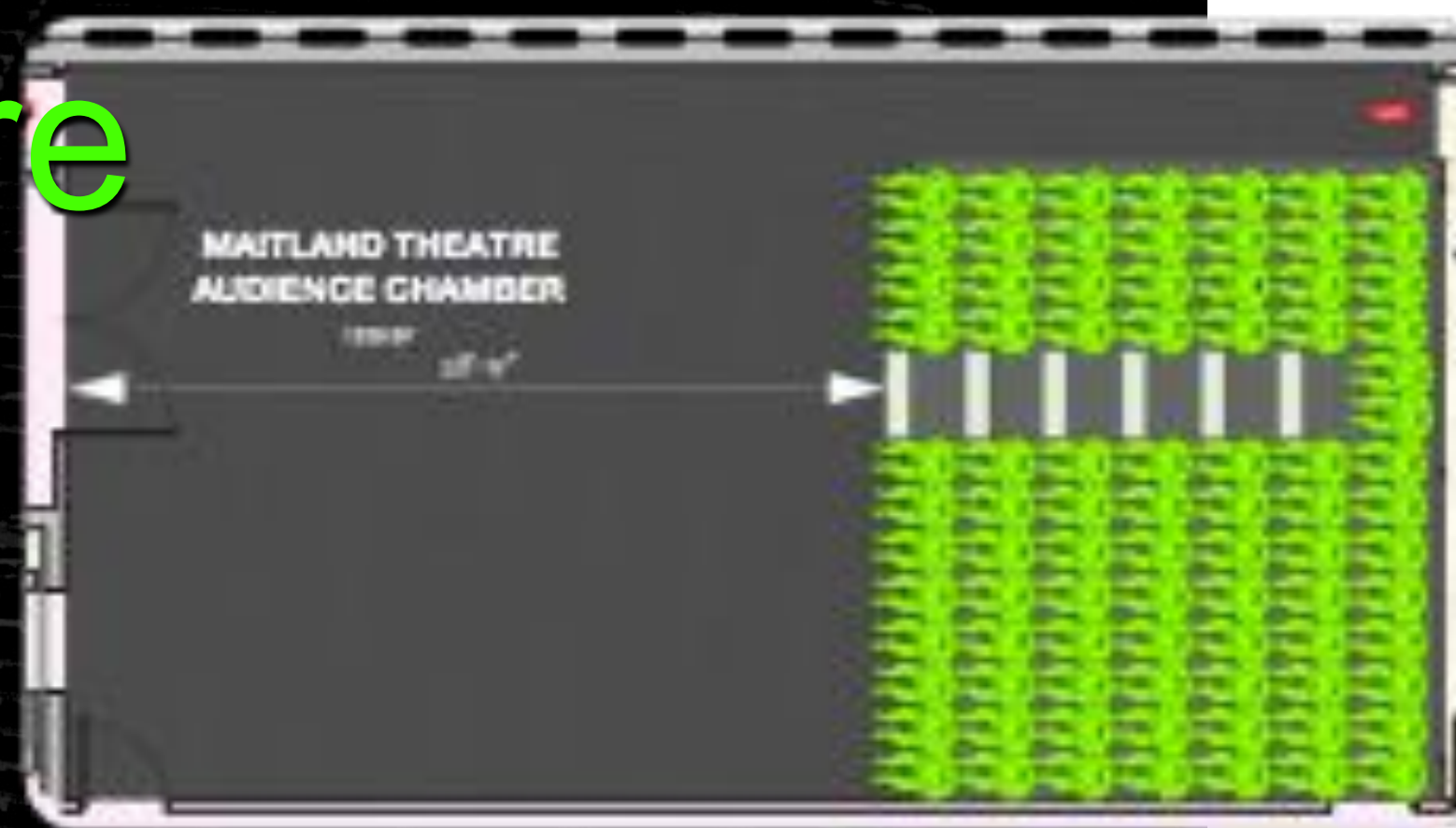
MAITLAND STREET



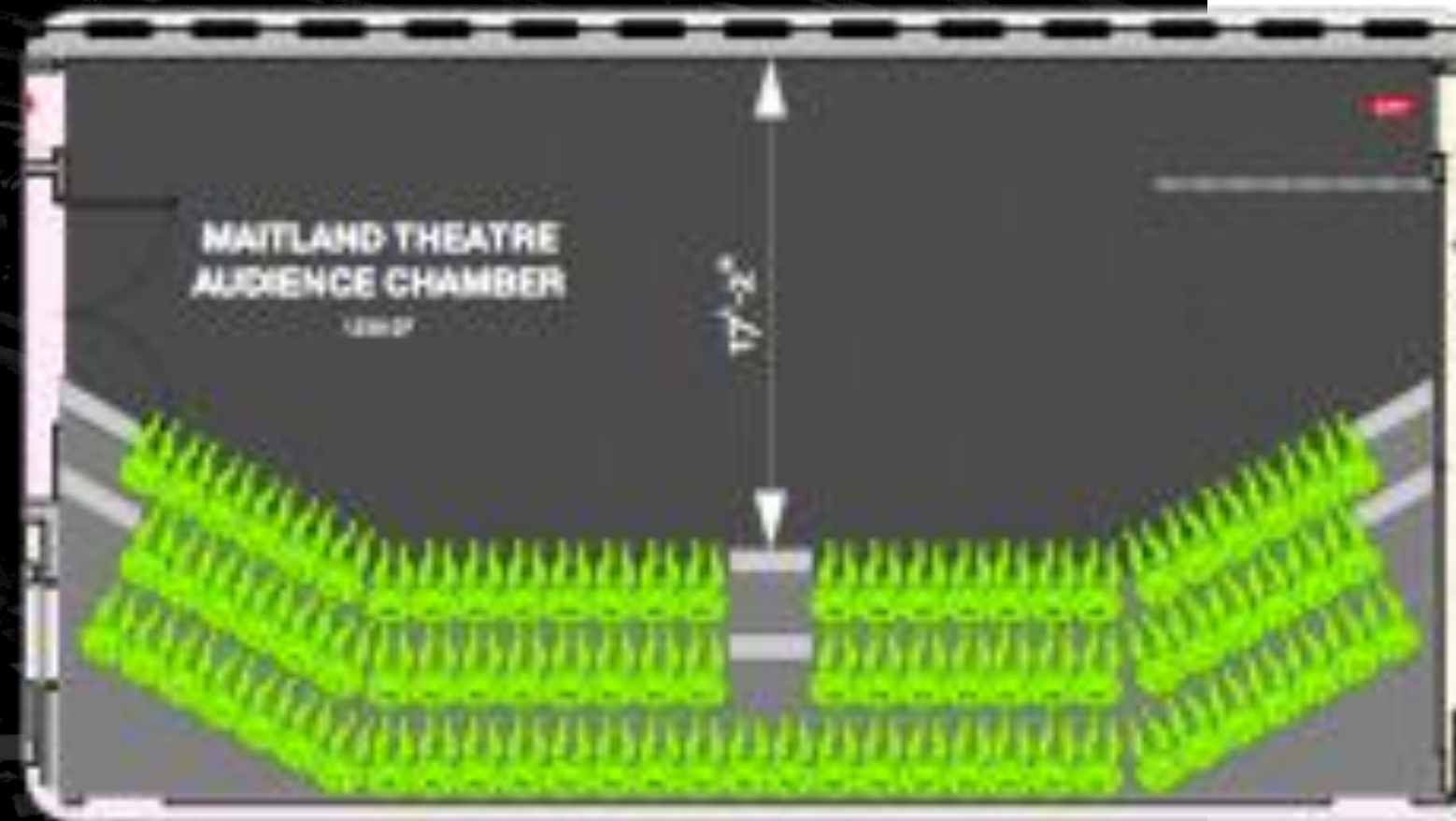
Future "Met Site" Building

with the expansion, the NEW lobby and theatre are EVEN MORE FLEXIBLE

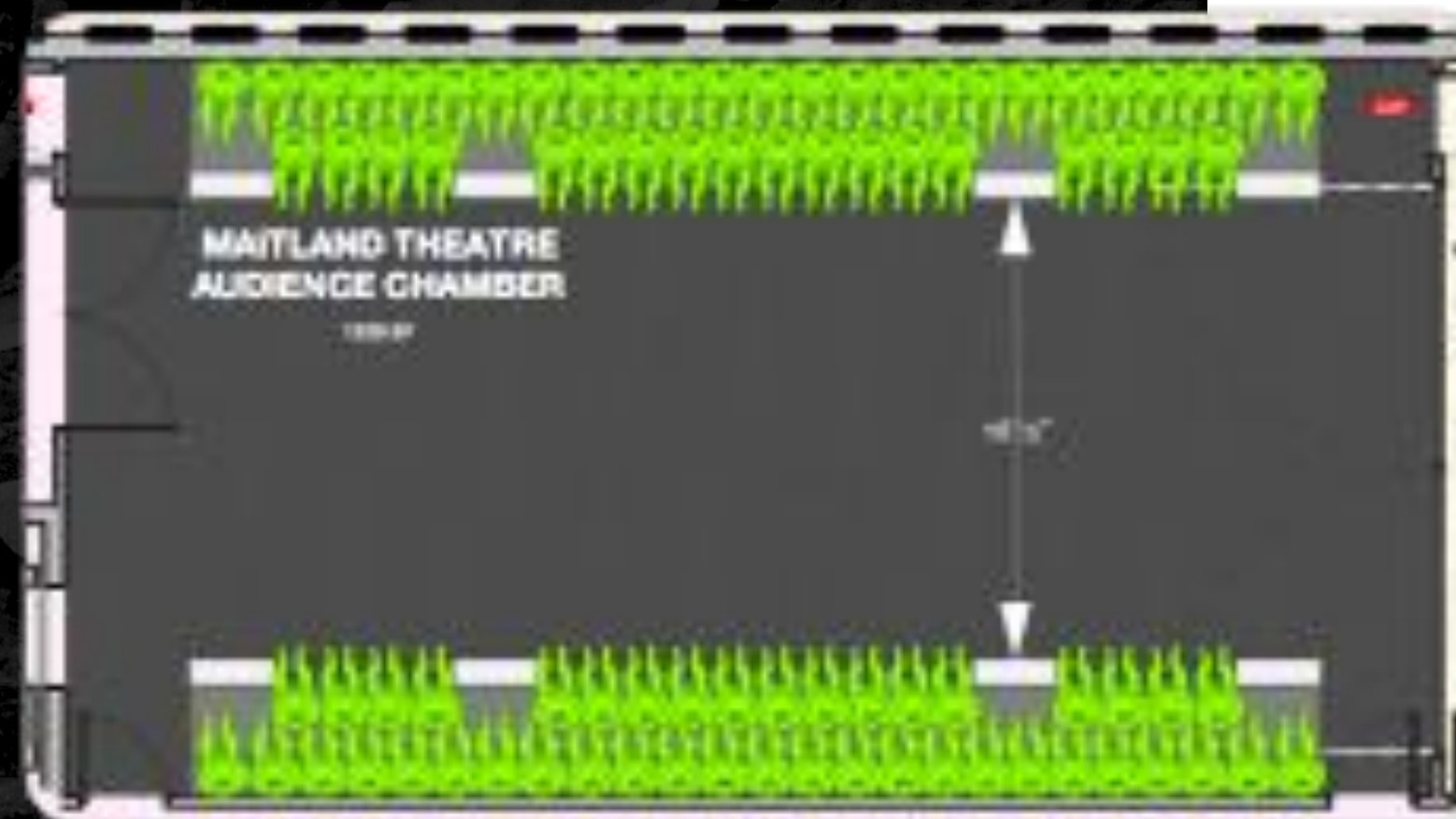
Level 1: Maitland Theatre



86 seats
End Stage Configuration
28'-9" scenographic depth

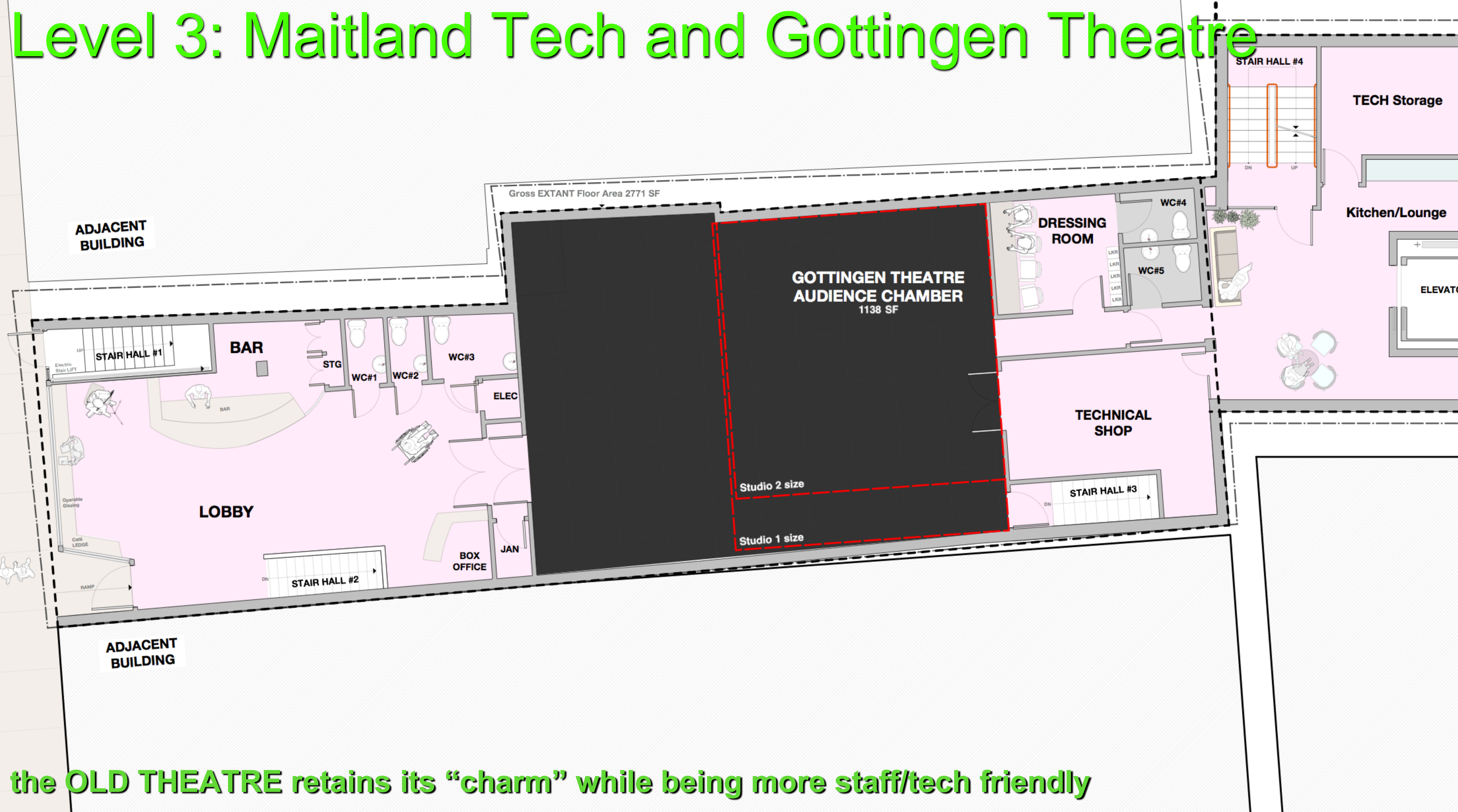


85 seats
Cross Stage Configuration
17'-2" scenographic depth



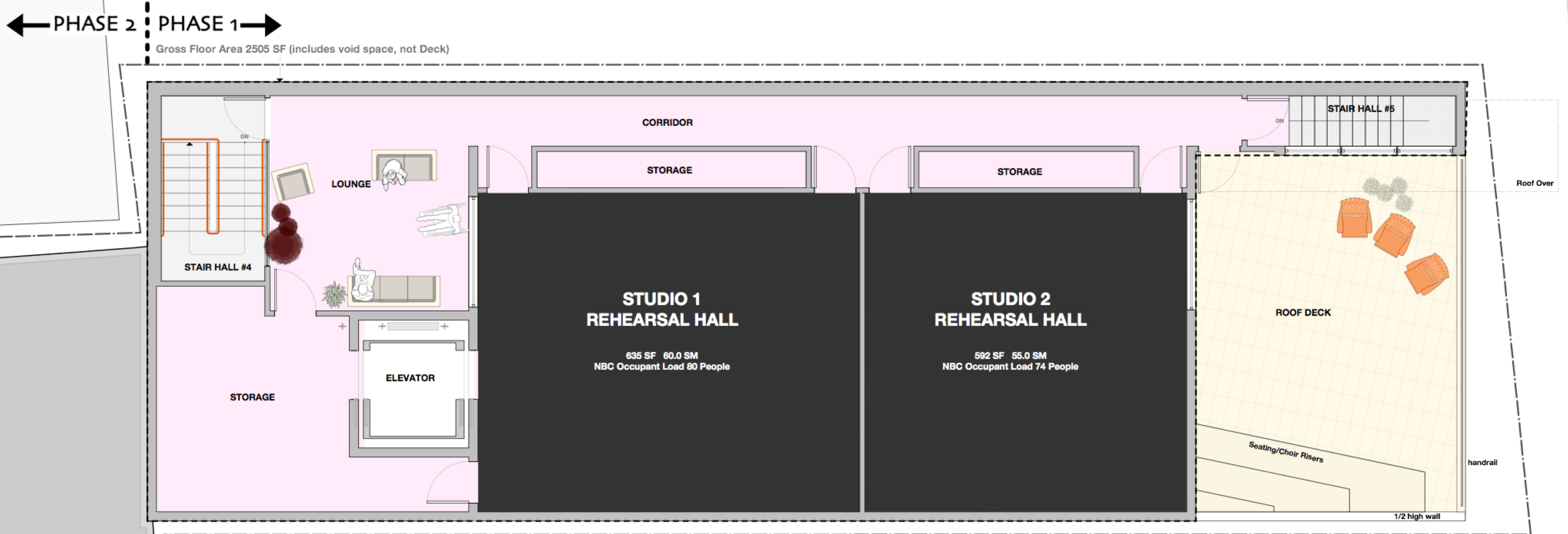
86 seats
Alley Stage Configuration
16'-2" scenographic depth

Level 3: Maitland Tech and Gottingen Theatre



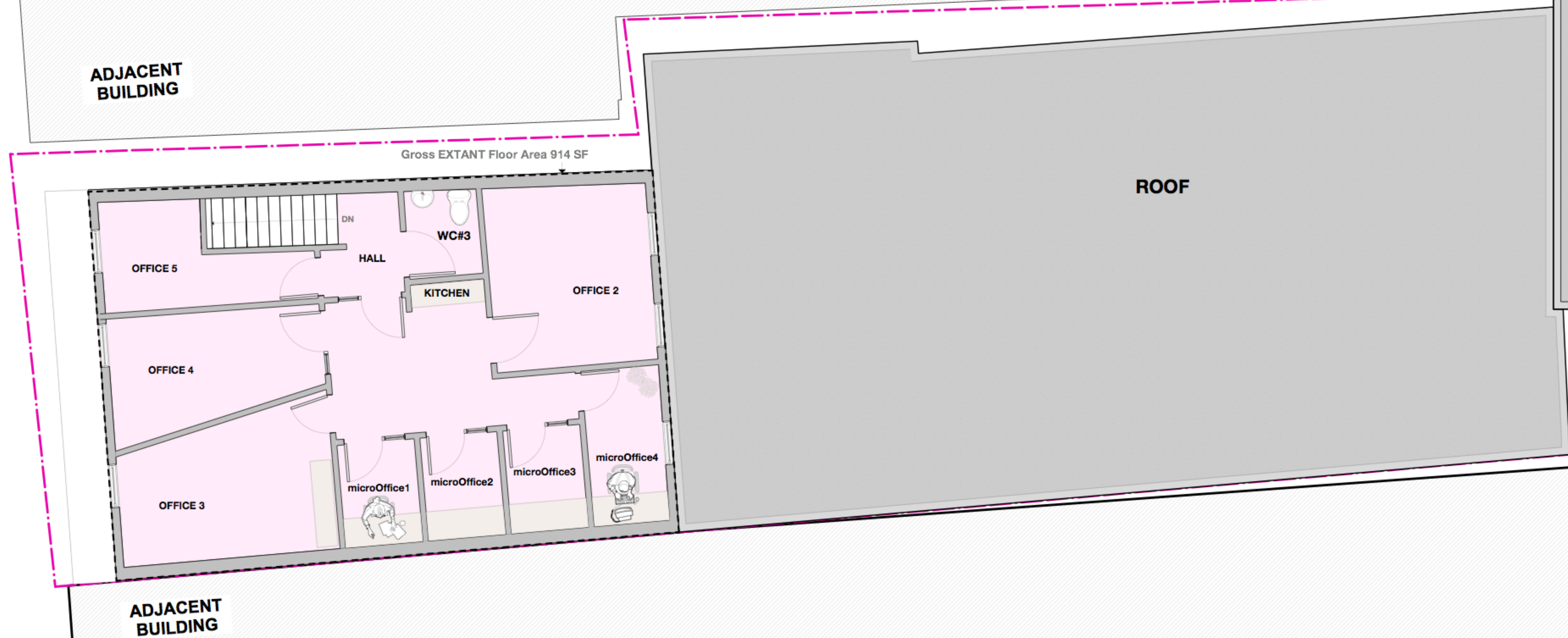
the **OLD THEATRE** retains its “charm” while being more staff/tech friendly

Level 4: Rehearsal Rooms and Community Space



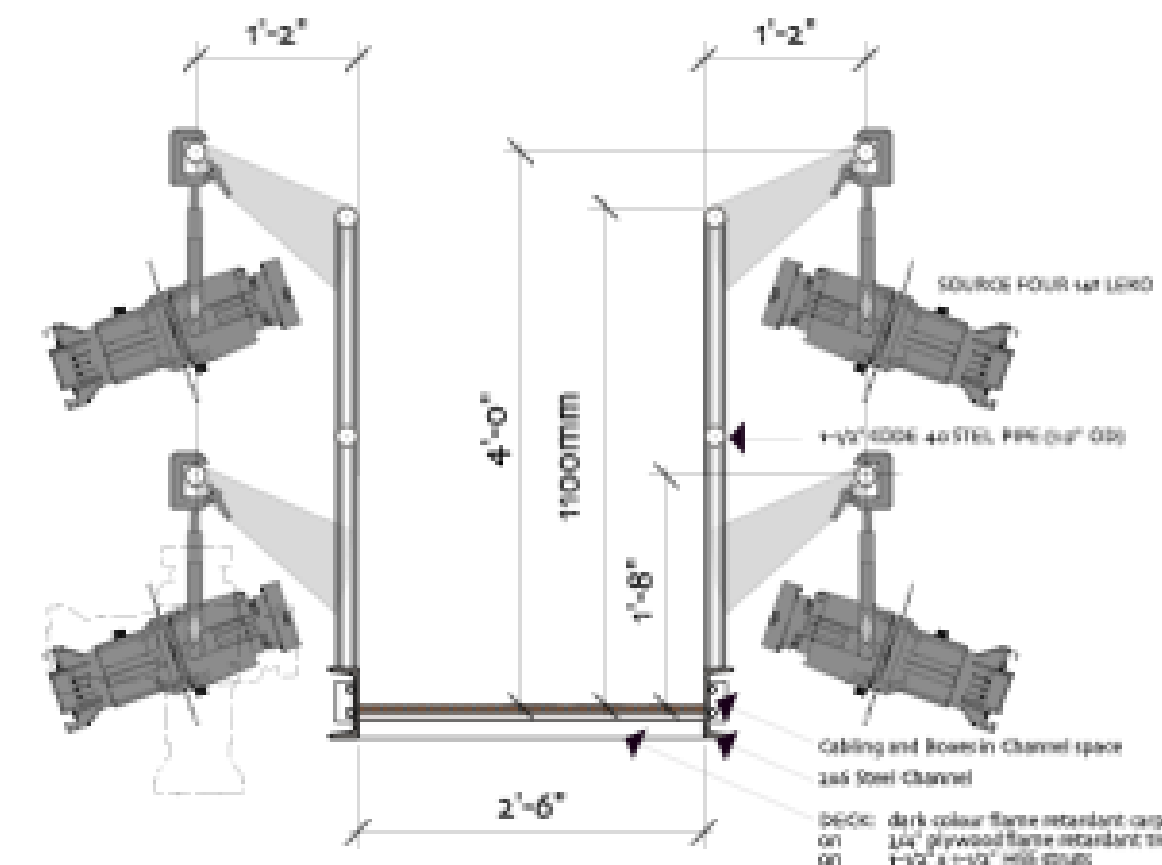
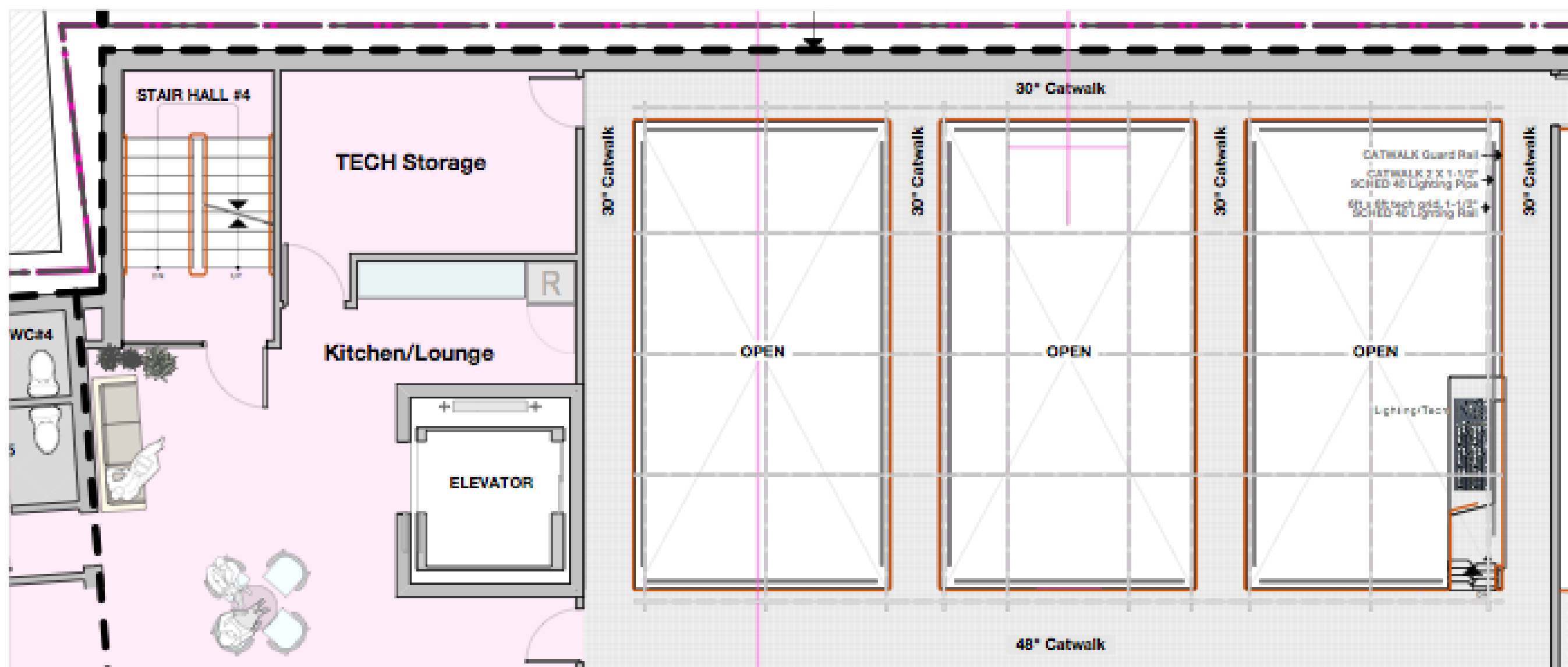
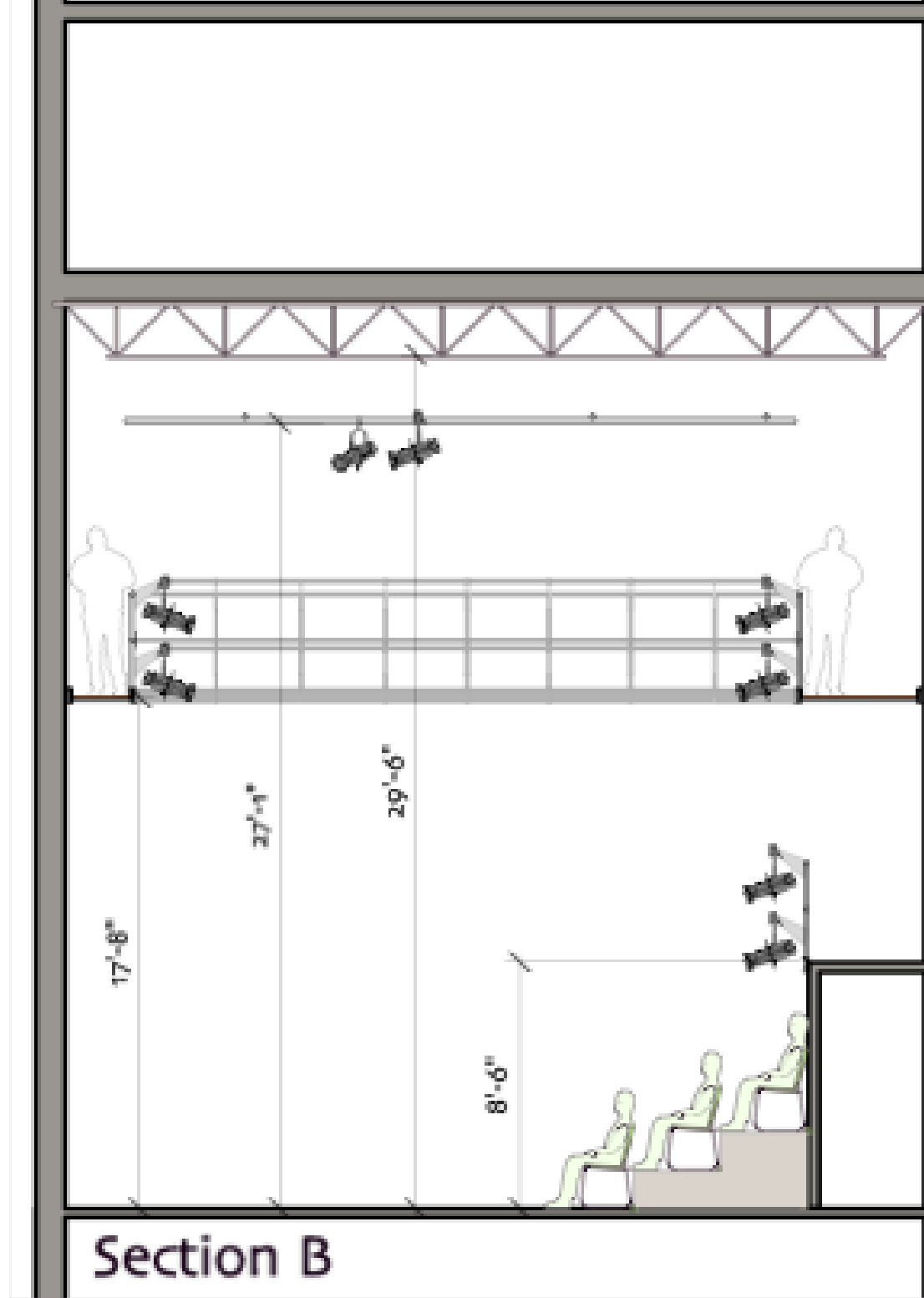
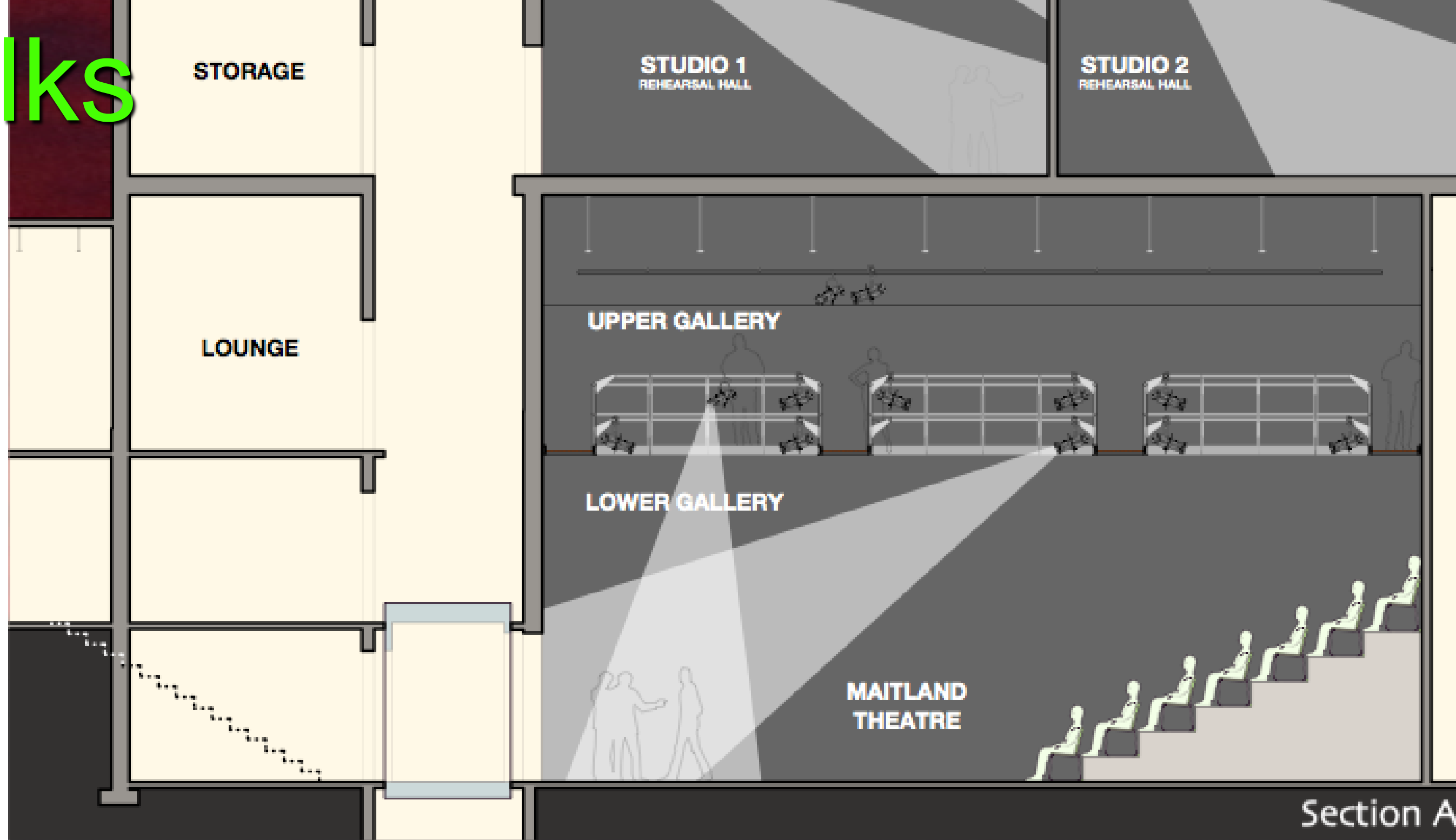
The new building adds two great rehearsal spaces to the Halifax inventory.

Level 5: Arts Community Creator Spaces



The old building's apartments are converted into theatre/community support

Catwalks



DETAIL

BUS STOP THEATRE CO-OP

PRELIMINARY

This set of drawings has been prepared for a design review meeting on 2018.OCT.17. Aspects of this and other drawings may be incomplete or uncoordinated.

Peter Henry ARCHITECT

3252 Veith Street
HALIFAX NS B3K 3H2 Canada
902.455.9884
phArchitects@peaktlink.com

sam

STRATEGIC ART MANAGEMENT

Catwalks (technical galleries) SECTION & PLAN

0 feet
1 1/2" = 1'0"
0 meters

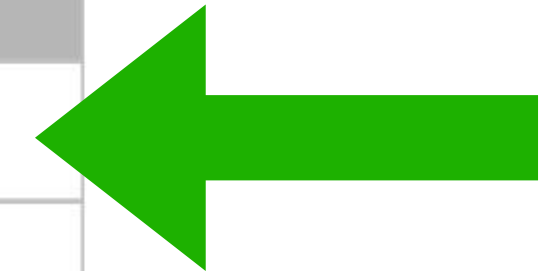
drawn p
summer/autumn 2017
drawing number
A.93

Tech galleries provide safe work space and great lighting and cinematic angles



PROJECT BUDGET

PHASES	Amount
1 - Land Purchase & Related	\$725,000
2 - New Theatre + Rehearsal Halls	\$3,641,578
3 - Revive Current Bus Stop Theatre	\$1,252,990
4 - Contingency (15%)	\$842,935
5 - Administration & Fundraising Support	\$37,496
Total Project Expense	\$6,500,000
Federal Government	\$2,500,000
Provincial Government	\$2,500,000
Municipal Government	\$500,000
Private Sector Fundraising	\$1,000,000
Total Project Revenue	\$6,500,000



BUS STOP THEATRE CO·OP

