



Kassner Goodspeed Architects Ltd.

5663 Cornwallis Street, Suite 200, Halifax, NS B3K 1B6
tel 902 422 1557 | fax 902 422 8685 | www.kgarchitects.ca



PROPOSED RESIDENTIAL DEVELOPMENT

ROBIE AND COLLEGE STREETS, HALIFAX NS

AERIAL VIEW 1

CONCEPT C

1"=30' (1:360)

Aug 10, 2016



Kassner Goodspeed Architects Ltd.
5663 Cornwallis Street, Suite 200, Halifax, NS B3K 1B6
tel 902 422 1557 | fax 902 422 8685 | www.kgarchitects.ca



PROPOSED RESIDENTIAL DEVELOPMENT

ROBIE AND COLLEGE STREETS, HALIFAX NS

PLAN upper levels

SCALE 1"=40' (1:480)



Kassner Goodspeed Architects Ltd.
5663 Cornwallis Street, Suite 200, Halifax, NS B3K 1B6
tel 902 422 1557 | fax 902 422 8685 | www.kgarchitects.ca



PROPOSED RESIDENTIAL DEVELOPMENT

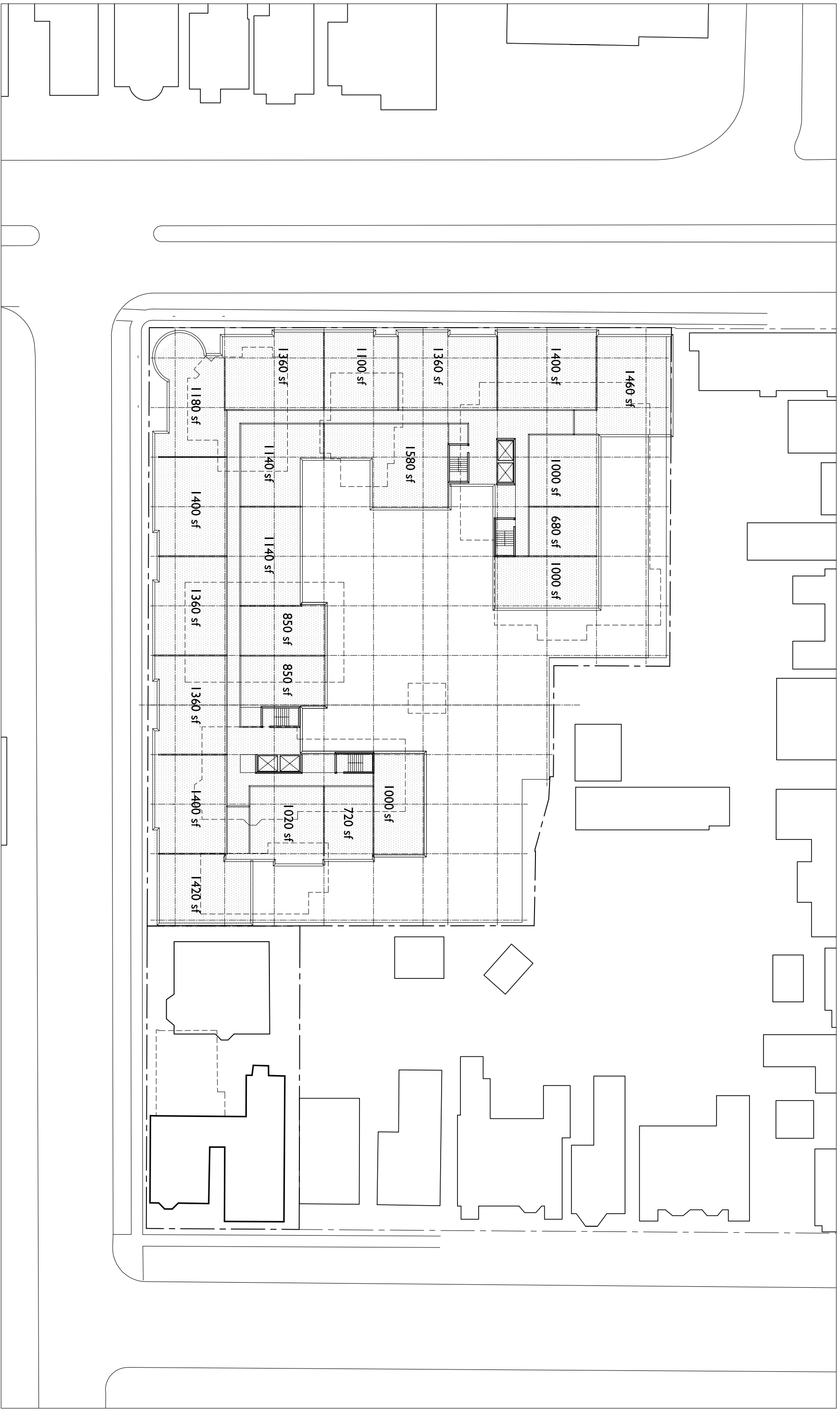
ROBIE AND COLLEGE STREETS, HALIFAX NS

PLAN intermediate levels

SCALE 1"=40' (1:480)



Kassner Goodspeed Architects Ltd.
5663 Cornwallis Street, Suite 200 Halifax, NS B3K 1B6
tel 902 422 1557 | fax 902 422 8685 | www.kgaarchitects.ca



PROPOSED RESIDENTIAL DEVELOPMENT

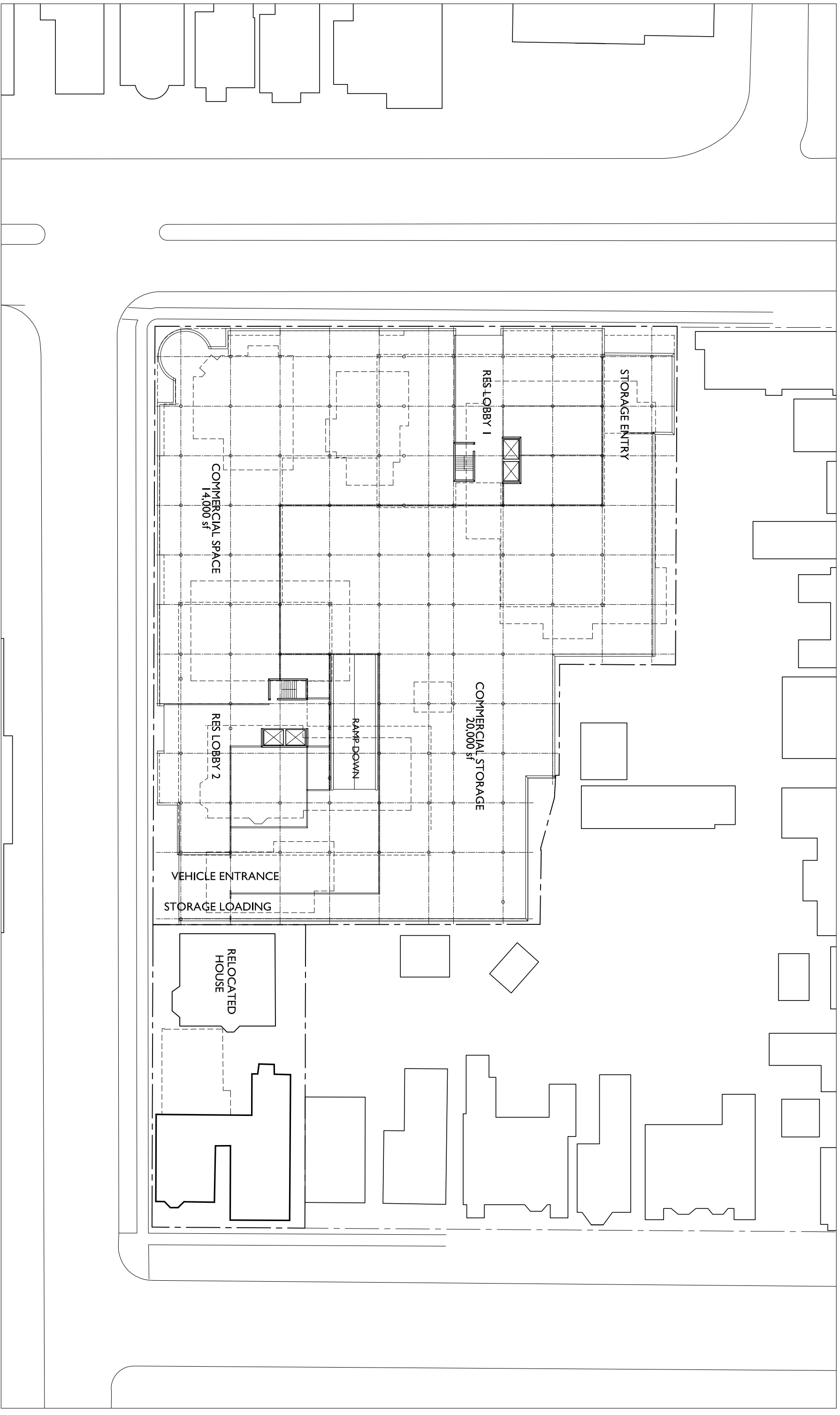
ROBIE AND COLLEGE STREETS, HALIFAX NS

PLAN streetwall levels

SCALE 1"=40' (1:480)



Kassner Goodspeed Architects Ltd.
5663 Cornwallis Street, Suite 200 Halifax, NS B3K 1B6
tel 902 422 1557 | fax 902 422 8685 | www.kgaarchitects.ca



PROPOSED RESIDENTIAL DEVELOPMENT

ROBIE AND COLLEGE STREETS, HALIFAX NS

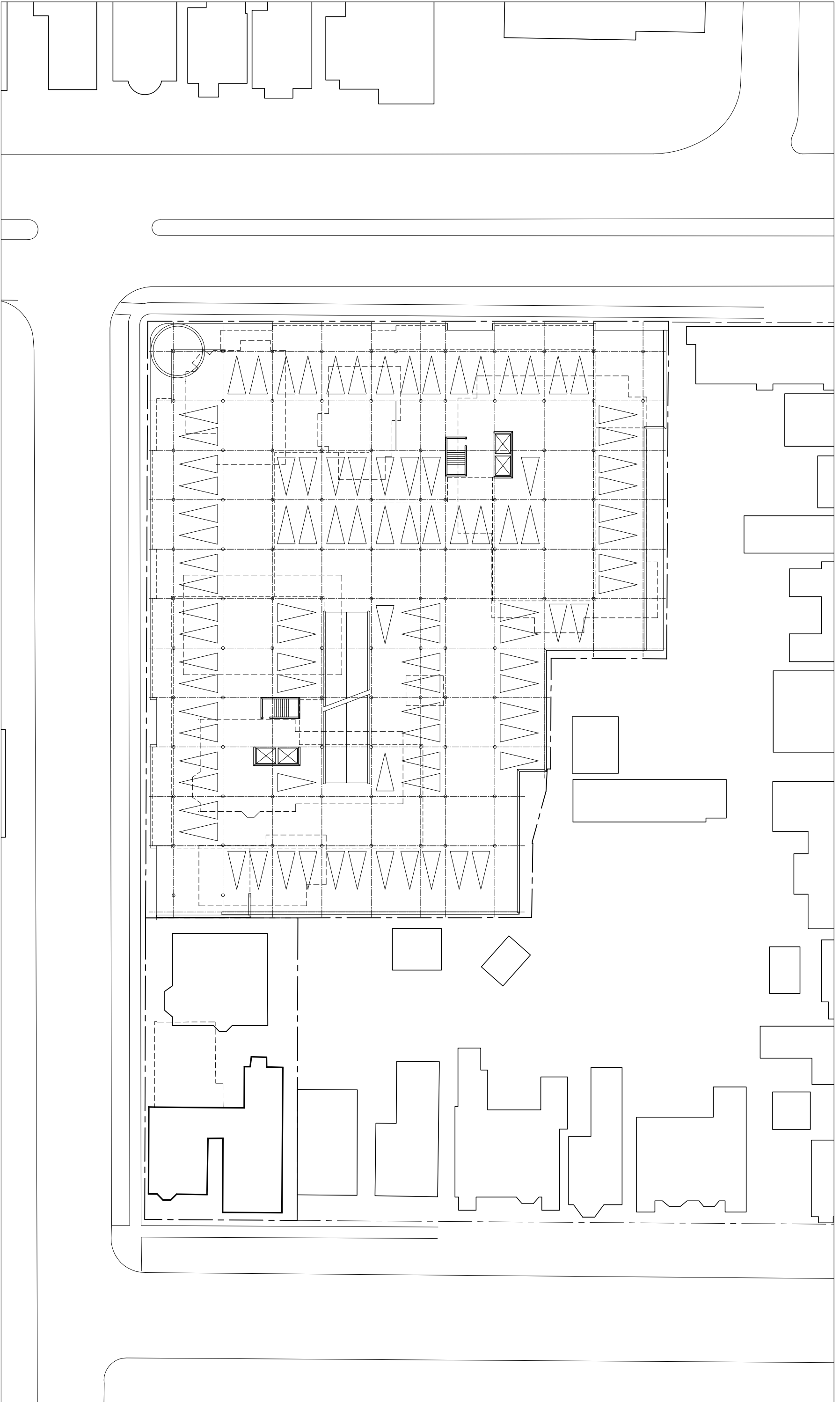
PLAN ground level

SCALE 1"=40' (1:480)



Kassner Goodspeed Architects Ltd.

5663 Cornwallis Street, Suite 200, Halifax, NS B3K 1B6
tel 902 422 1557 | fax 902 422 8685 | www.kgaarchitects.ca



PROPOSED RESIDENTIAL DEVELOPMENT

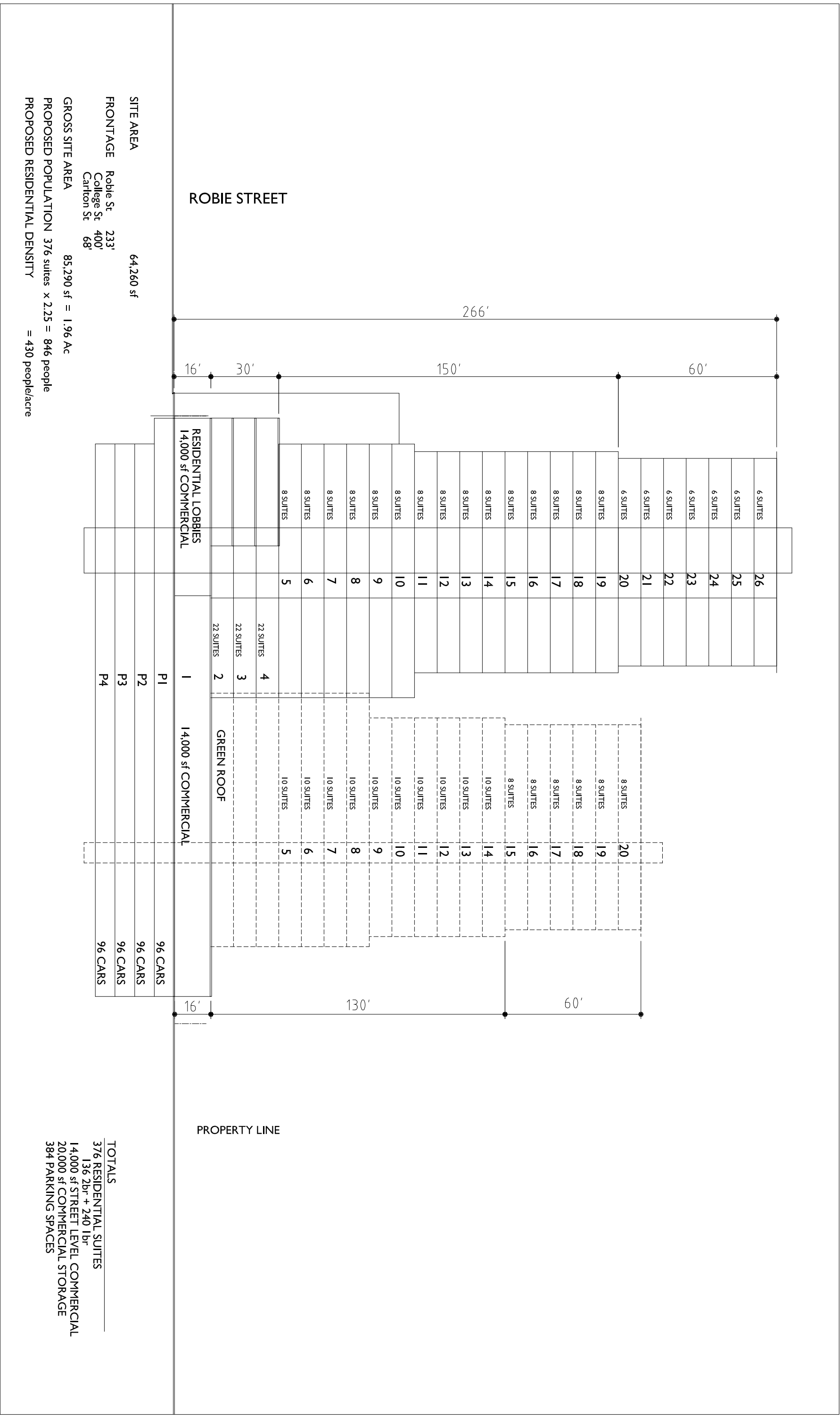
ROBIE AND COLLEGE STREETS, HALIFAX NS

PLAN parking levels

SCALE 1"=40' (1:480)



Kassner Goodspeed Architects Ltd.
 5663 Cornwallis Street, Suite 200, Halifax, NS B3K 1B6
 Tel: 902 422 1557 | Fax: 902 422 8685 | www.kgarchitects.ca



SITE AREA 64,260 sf
 FRONTAGE Robie St 233'
 College St 400'
 Carlton St 68'
 GROSS SITE AREA 85,290 sf = 1.96 Ac
 PROPOSED POPULATION 376 suites x 2.25 = 846 people
 PROPOSED RESIDENTIAL DENSITY = 430 people/acre

RESIDENTIAL LOBBIES 14,000 sf COMMERCIAL	1	14,000 sf COMMERCIAL	96 CARS
	P1		96 CARS
	P2		96 CARS
	P3		96 CARS
	P4		96 CARS
26	6 SUITES		
25	6 SUITES		
24	6 SUITES		
23	6 SUITES		
22	6 SUITES		
21	6 SUITES		
20	6 SUITES		
19	8 SUITES		
18	8 SUITES		
17	8 SUITES		
16	8 SUITES		
15	8 SUITES		
14	8 SUITES		
13	8 SUITES		
12	8 SUITES		
11	8 SUITES		
10	8 SUITES		
9	8 SUITES		
8	8 SUITES		
7	8 SUITES		
6	8 SUITES		
5	8 SUITES		
4	22 SUITES		
3	22 SUITES		
2	22 SUITES		
20	8 SUITES		
19	8 SUITES		
18	8 SUITES		
17	8 SUITES		
16	8 SUITES		
15	8 SUITES		
14	10 SUITES		
13	10 SUITES		
12	10 SUITES		
11	10 SUITES		
10	10 SUITES		
9	10 SUITES		
8	10 SUITES		
7	10 SUITES		
6	10 SUITES		
5	10 SUITES		

TOTALS
 376 RESIDENTIAL SUITES
 136 2br + 240 1br
 14,000 sf STREET LEVEL COMMERCIAL
 20,000 sf COMMERCIAL STORAGE
 384 PARKING SPACES

PROPOSED RESIDENTIAL DEVELOPMENT

ROBIE AND COLLEGE STREETS, HALIFAX NS

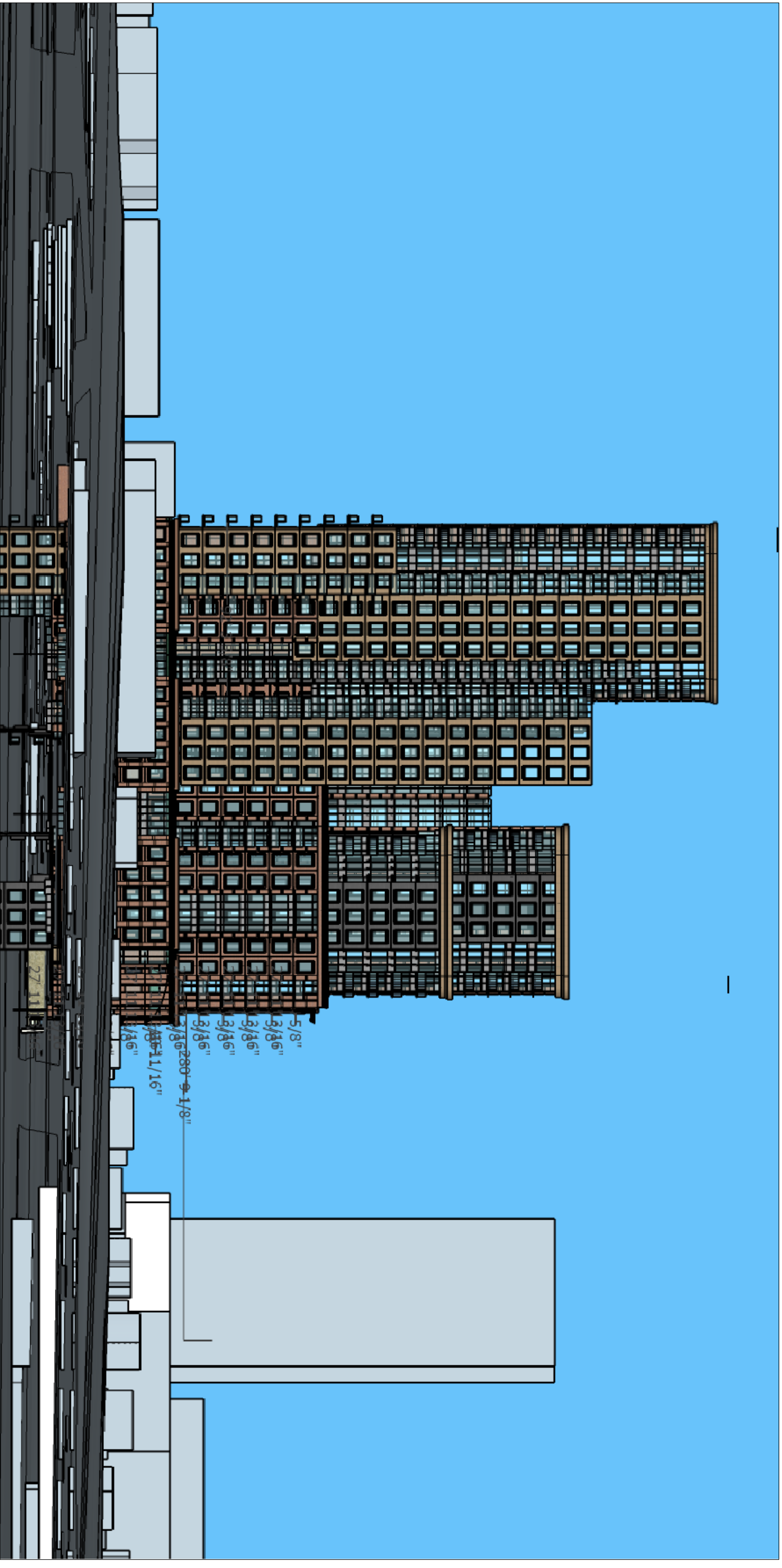
CROSS SECTION

SCALE 1"=30' (1:360)



Kassner Goodspeed Architects Ltd.

5663 Cornwallis Street, Suite 200, Halifax, NS B3K 1B6
tel 902 422 1557 | fax 902 422 8685 | www.kgaarchitects.ca



PROPOSED RESIDENTIAL DEVELOPMENT

ROBIE AND COLLEGE STREETS, HALIFAX NS

ELEVATION - ROBIE STREET

CONCEPT C

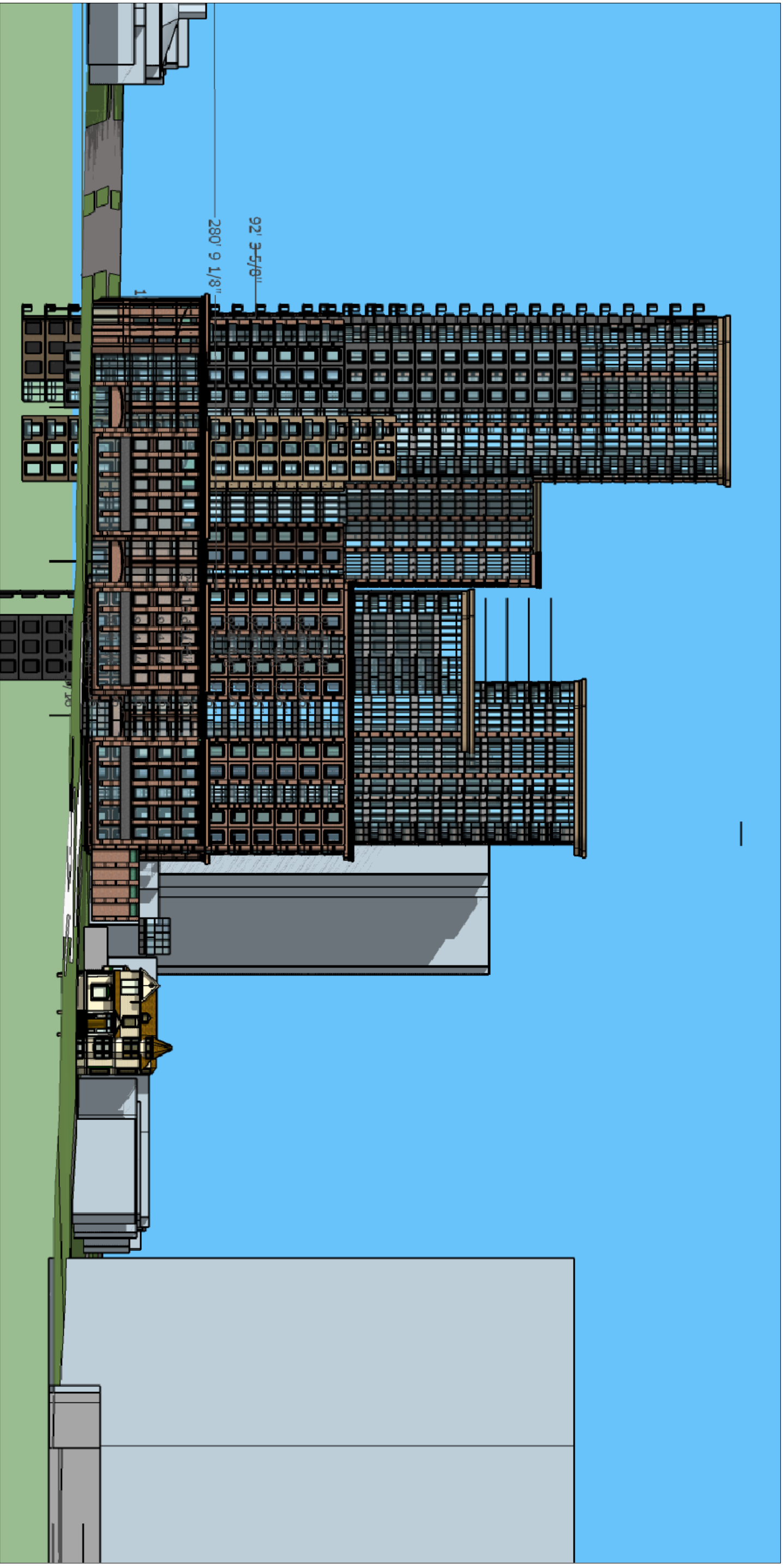
1"=30' (1:360)

Aug 10, 2016



Kassner Goodspeed Architects Ltd.

5663 Cornwallis Street, Suite 200, Halifax, NS B3K 1B6
tel 902 422 1557 | fax 902 422 8685 | www.kgaarchitects.ca



PROPOSED RESIDENTIAL DEVELOPMENT

ROBIE AND COLLEGE STREETS, HALIFAX NS

ELEVATION - COLLEGE STREET

CONCEPT C

1"=30' (1:360)

Aug 10, 2016