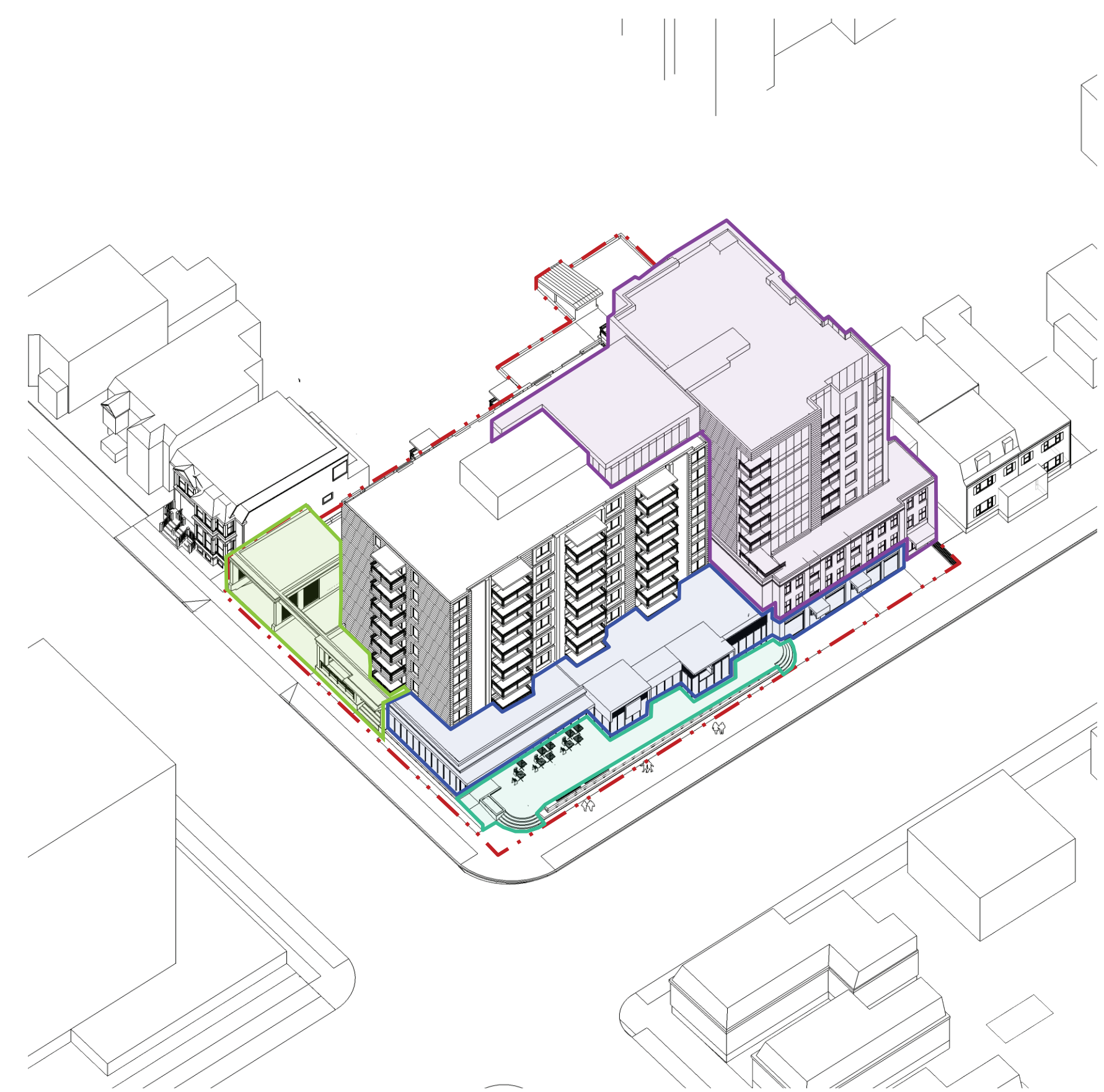


SITE LOCATION



AREA OF IMPACT DIAGRAM

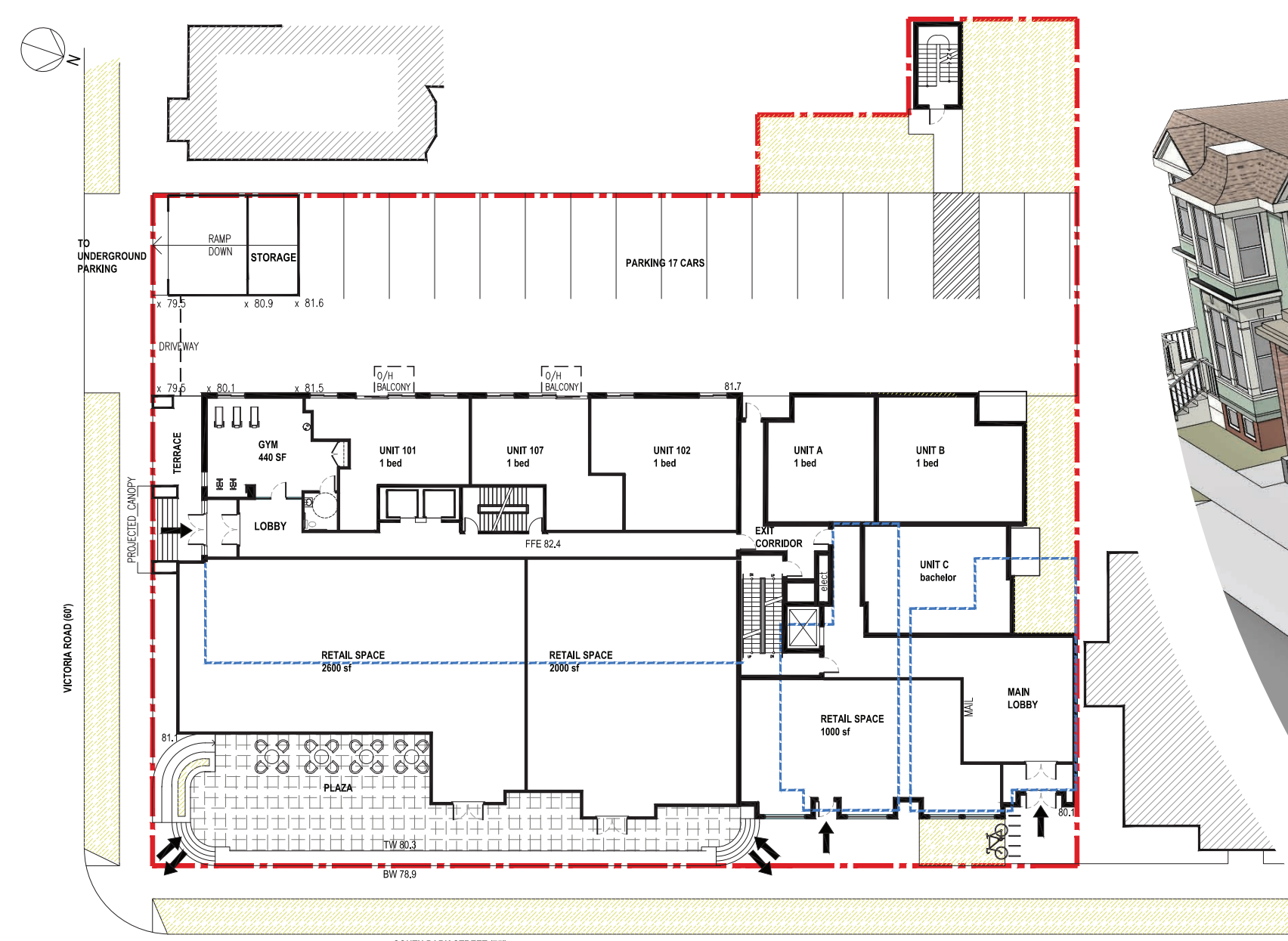


PROPOSED REDEVELOPMENT DIAGRAM

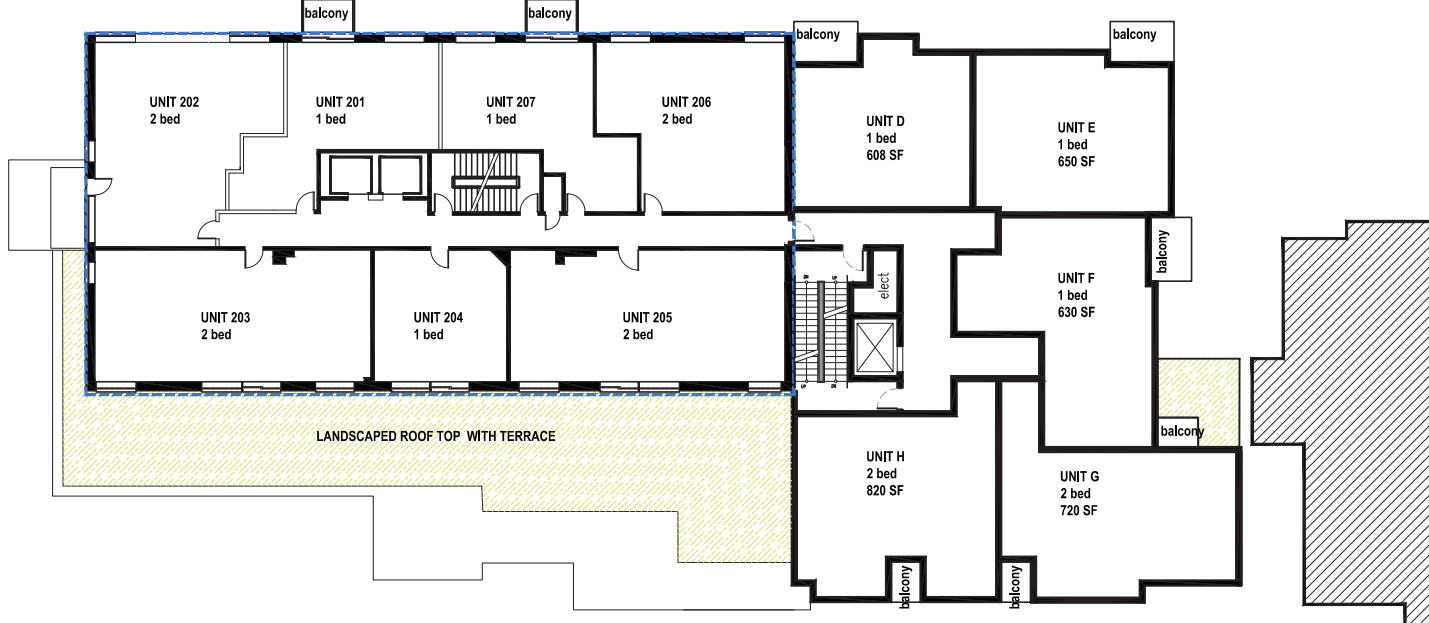
EXISTING SITE AREA: 25,865 sf = 0.59 Ac = 2,402 m<sup>2</sup>  
 RETAIL ADDITION: 5100 sf  
 RESIDENTIAL ADDITION: 9 STORY - 31 UNITS  
 27 PARKING SPACES  
 DENSITY: TOTAL - 220 people  
 EXISTING - 132, ADDITIONAL - 88

PROPOSAL DETAILS

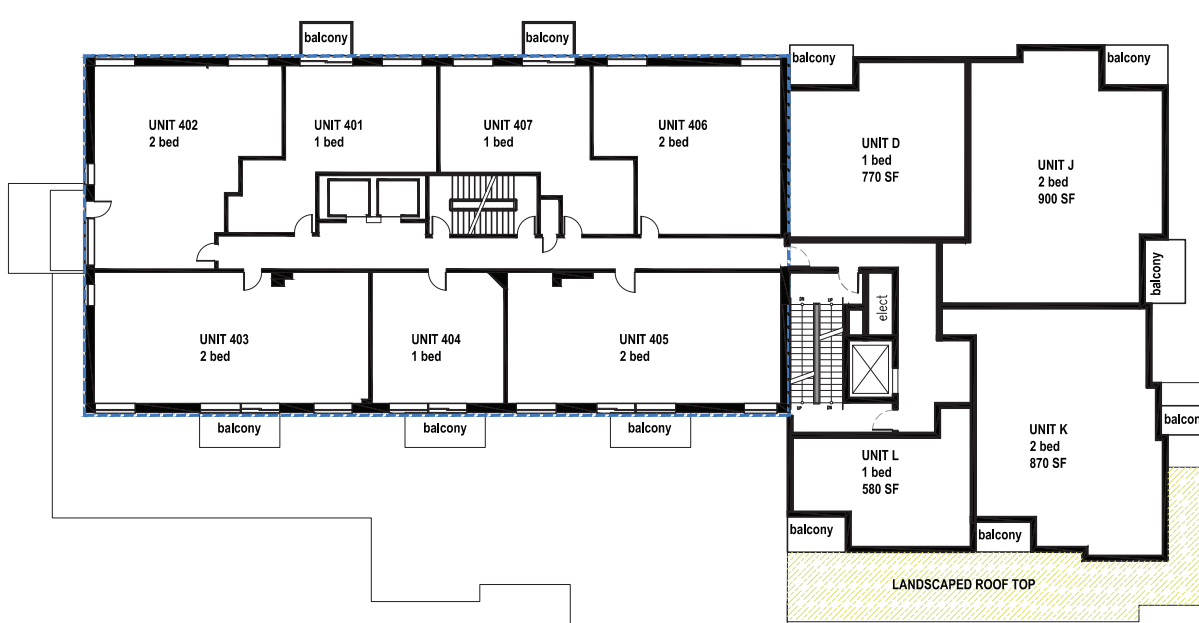
LEGEND  
 - SITE BOUNDARY  
 - RETAIL SPACE - 1 STORY  
 - PLAZA - OPEN PUBLIC SPACE  
 - RESIDENTIAL TOWER - 8 STORY  
 - ENCAPSULATED PARKING ENTRY



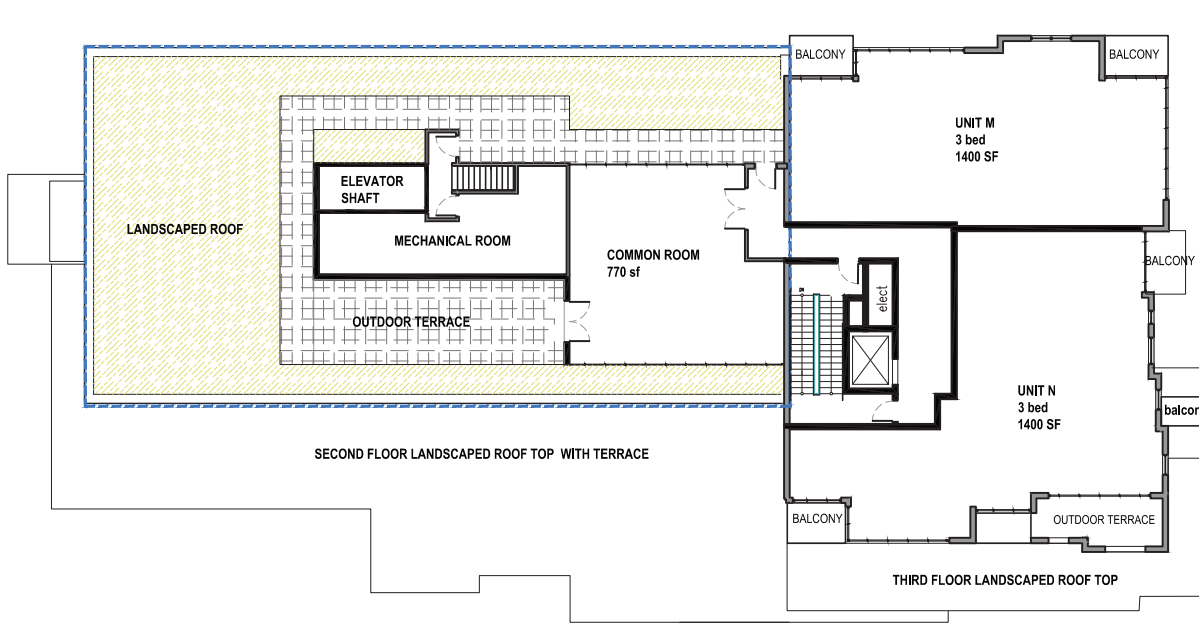
FLOOR PLAN LVL 1



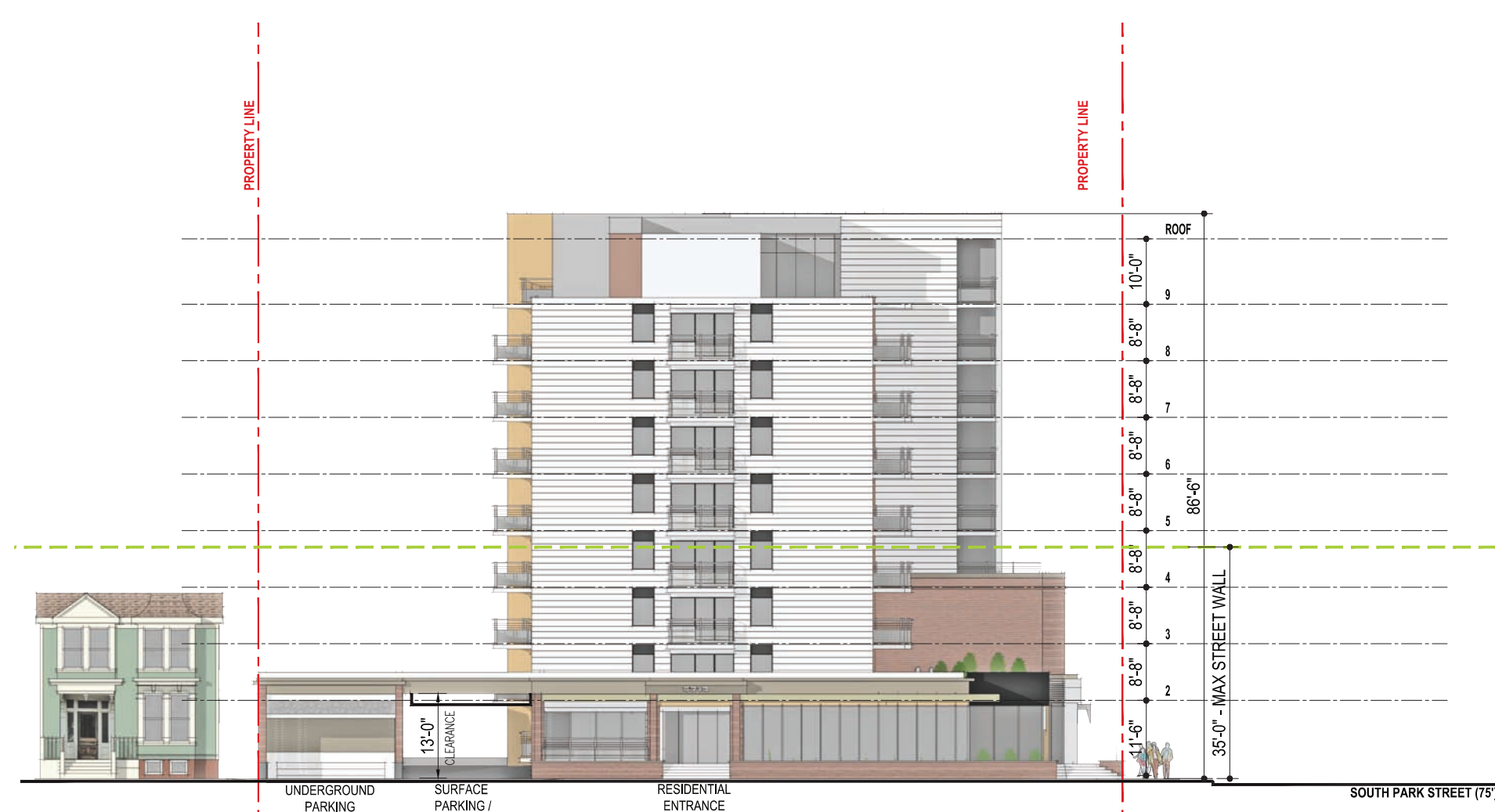
FLOOR PLAN LVL 2



FLOOR PLAN LVL 4-8



FLOOR PLAN LVL 9



VICTORIA RD. ELEVATION



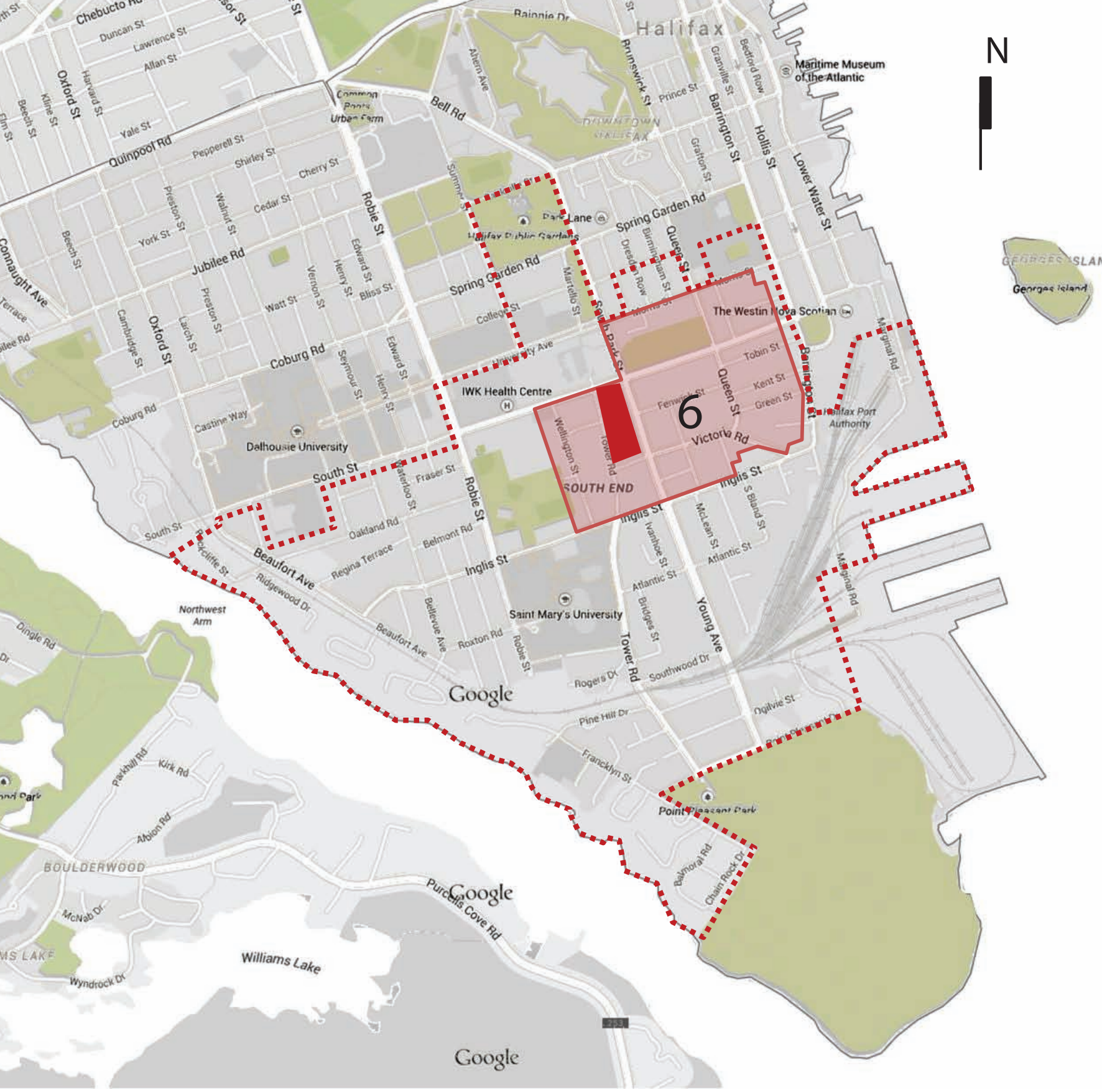
SOUTH PARK ST. ELEVATION

VICTORIA RD. VIEW



SOUTH PARK ST. VIEW

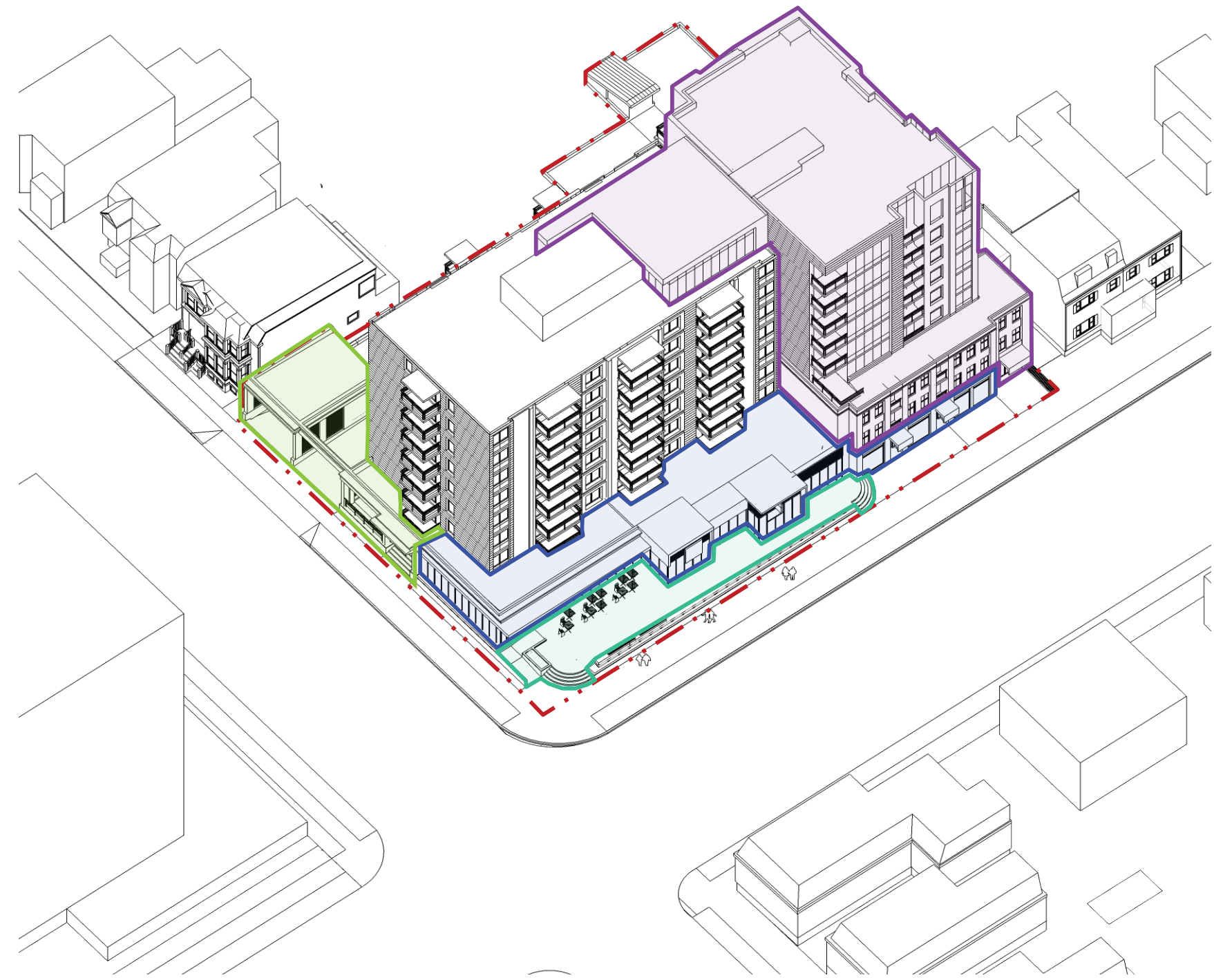




SITE LOCATION



AREA OF IMPACT DIAGRAM

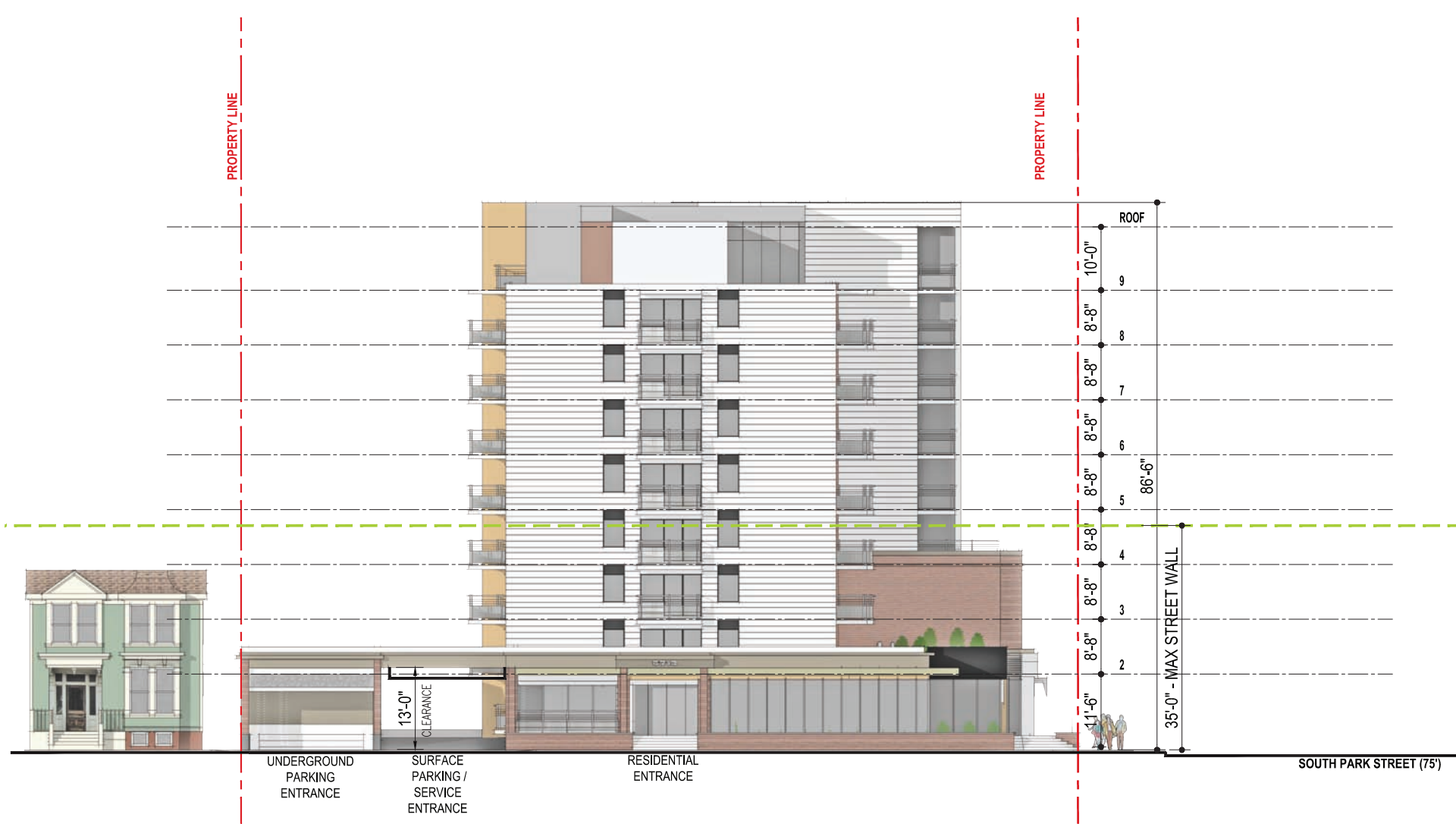


PROPOSED REDEVELOPMENT DIAGRAM

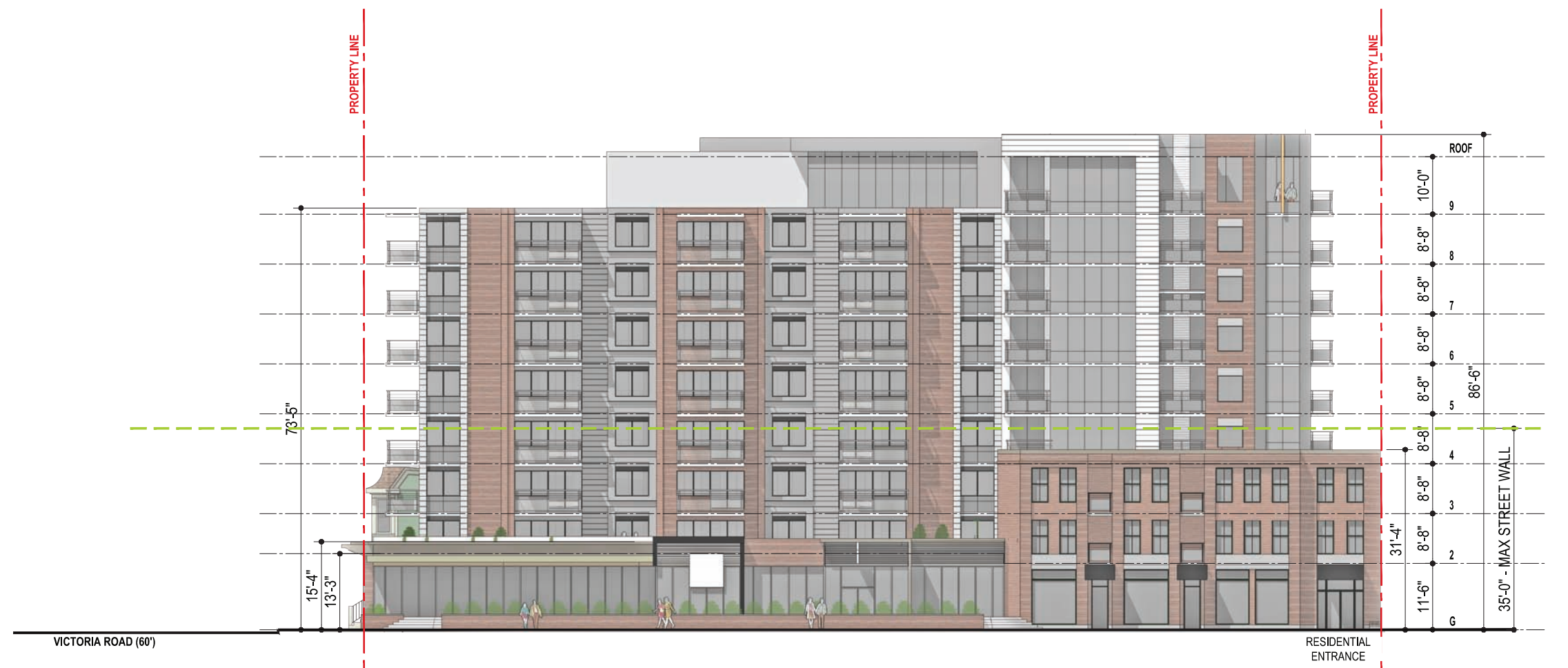
EXISTING SITE AREA: 25,865 sf = 0,59 Ac = 2,402 m<sup>2</sup>  
 RETAIL ADDITION : 5100 sf  
 RESIDENTIAL ADDITION : 9 STORY - 31 UNITS  
 27 PARKING SPACES  
 DENSITY: TOTAL - 220 people  
 EXISTING - 132, ADDITIONAL - 88

PROPOSAL DETAILS

LEGEND  
 - SITE BOUNDARY  
 - RETAIL SPACE - 1 STORY  
 - PLAZA - OPEN PUBLIC SPACE  
 - RESIDENTIAL TOWER - 8 STORY  
 - ENCAPSULATED PARKING ENTRY

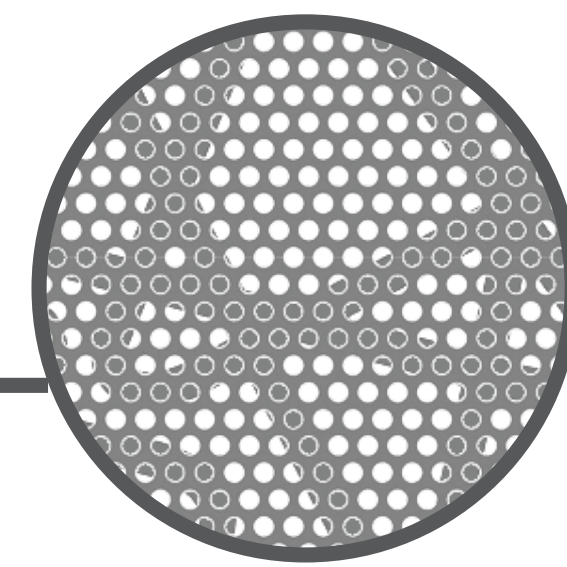


VICTORIA RD. ELEVATION



SOUTH PARK ST. ELEVATION

VICTORIA RD. VIEW



Kassner Goodspeed  
 Architects Ltd.  
 5663 Cornwallis Street  
 Suite 200  
 Halifax, NS  
 B3K 1B6  
 tel 902 422 1557  
 fax 902 422 8685  
 www.kgarch.ns.ca



**Kassner Goodspeed**

**Architects Ltd.**

5663 Cornwallis Street  
Suite 200

Halifax, NS

B3K 1B6

tel 902 422 1557

fax 902 422 8685

[www.kgarch.ns.ca](http://www.kgarch.ns.ca)

SOUTH PARK TOWERS RENOVATION

1



SOUTH PARK TOWERS RENOVATION