

# SpringGarden2018

## let it bloom





## Vibrant



## Inclusive



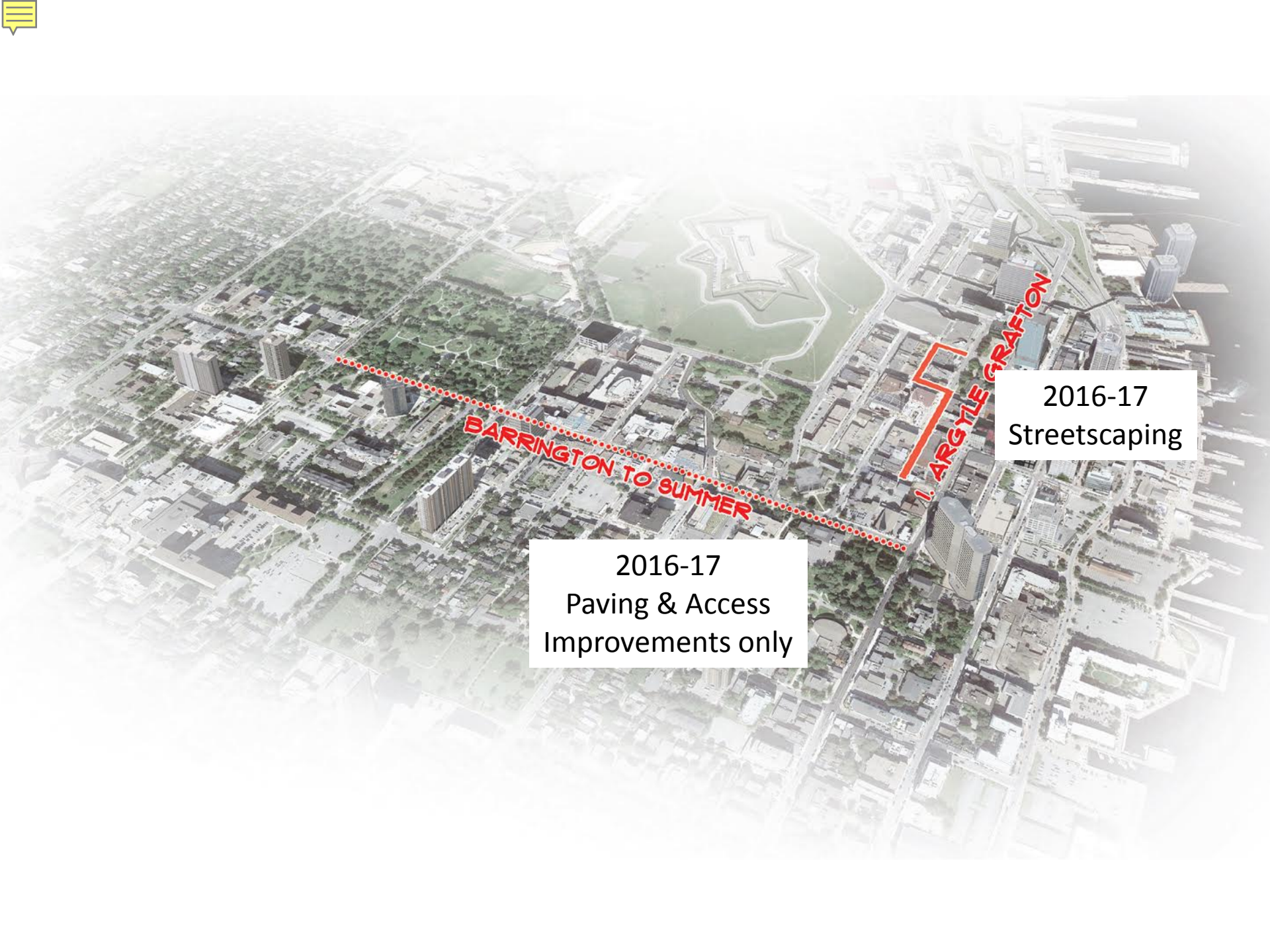
## Eclectic



## Respectful





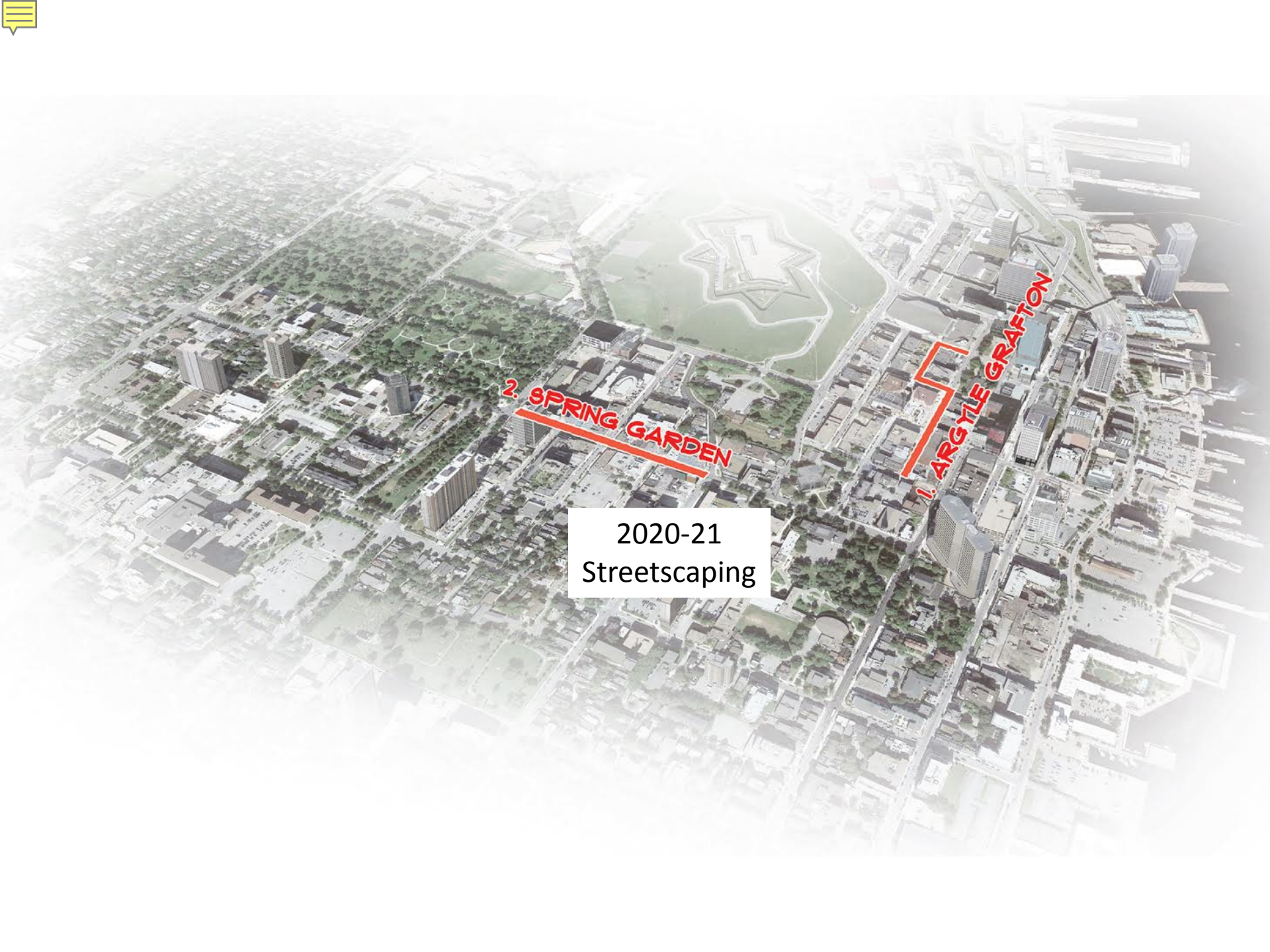


**BARRINGTON TO SUMMER**

**I. ARGYLE GRAFTON**

2016-17  
Paving & Access  
Improvements only

2016-17  
Streetscaping



2. SPRING GARDEN

1. ARGYLE GRAFTON

2020-21  
Streetscaping



**SPRING GARDEN**

**I. ARGYLE GRAFTON**

# A Pedestrian Network -The Missing Link



SPRING GARDEN

ARGYLE GRAFTON

CONNECTION





# Recommendation 1

- A. Review 2009 SpringGarden Design, *include Doyle and Old Library blocks*
- B. Implement SpringGarden Streetscaping between Queen and South Park streets in 2018.
- C. Consider implementing the Doyle and Old Library blocks concurrent with adjacent developments.
- D. Create Design Concept for Downtown Pedestrian Network

# Recommendation 2

Harvest immediately



**LOW  
HANGING  
FRUIT**



 **Bus Stops**

 **Delivery Vehicles**

 **Taxi Stand**

 **Signage/Wayfinding**

 **Taxation**

 **Accessibility**



**LOW  
HANGING  
FRUIT**

# Bus Stops

## Recommendation

Relocate Bus Stops away from heavy pedestrian areas



# Delivery Vehicles

## Recommendation

Limit deliveries on Spring Garden to off-peak hours



# Taxi Stand

Taxi's Important, but...

Violations the Norm

Idling an environmental  
& public health concern



## Recommendation

Evaluate taxi stand(s)

Consider automated (push button)  
stand with cars parked on side street(s)

# Signage

## 🍊 Recommendation

Dust off 2004 Wayfinding Report

Assess Car-Park wayfinding



Vehicular Directional

Parking Directional

Sub-District Identification



# Taxation Reform

## Inequity in Property Taxation!

Property Taxes per sq. foot



 **Recommendation**  
Fast track tax reform program





# Accessibility

54% of public domain elements don't meet CSA Accessibility Standards

## Recommendation

Fix Curb Cuts this year!

Update Red Book to include CSA accessibility standard as a minimum





**Thank You!**  
SpringGardenRoad  
**lets make it bloom in 2018**

