

**HALIFAX**

# **Community Design Advisory Committee**

Halifax & Dartmouth Building  
Dimension Tour

2018-04-25

# Halifax / Dartmouth Tour

Building	~Height	Lot Size	~Lot Coverage	%	~Floor Area	~GFAR	~Streetwall	~Streetwall Setback	~Front Yard Setback
The Roy	71.0	1687	1687	100%	20915	12.40	23	2	0
The Keep	27.0	2919	2800	96%	17500	6.00	20	1.5	0
Southport	21.0	3000	2500	83%	10271	3.42	16	1	0
St. Joseph's Square	32.0	3325	2720	82%	16926	5.09	9	8	4
Point North	59.0	3556	3166	89%	24333	6.84	16.5	7	0
The James	30.0	2630	1978	75%	9630	3.66	N/A	N/A	7
Founders Corner	21.3	1062	1062	100%	5769	5.43	9	1	0
The Terrace	18.7	3107	1230	40%	7380	2.38	N/A	N/A	6
The Avery	18.6	2777	2509	90%	12664	4.56	15.5	0.5	0
The Maple	72.0	2741	2650	97%	34914	12.74	14	3	0

*Dimensions shared in this presentation are approximations based on satellite imagery, they are not based on construction drawings*

# 1. The Roy



Height: 71m  
GFAR: 12.4  
Streetwall: 23m  
Streetwall Stepback: 2m

CENTRE PLAN

# 1. The Roy



CENTRE PLAN



## 2. The Keep



Height: 27m  
GFAR: 6.0  
Streetwall: 20m  
Streetwall Stepback: 1.5m



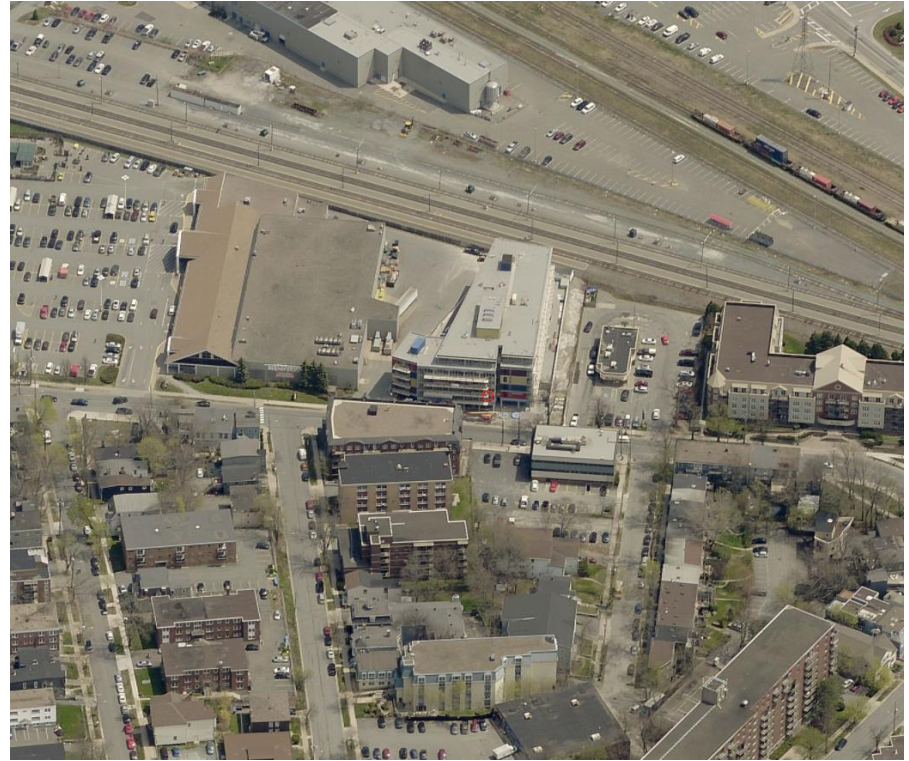
## 2. The Keep



CENTRE PLAN



# 3. Southport



Height: 21m  
GFAR: 3.42  
Streetwall: 16m  
Streetwall Stepback: 1m

CENTRE PLAN

# 3. Southport



CENTRE PLAN



# 4. St. Joseph's Square



Height:	32m
GFAR:	5.09
Streetwall:	9m
Streetwall Stepback:	8m

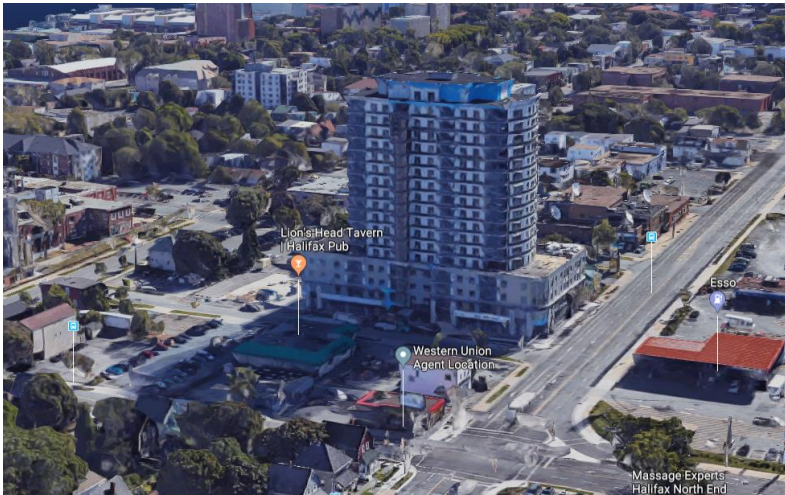
# 4. St. Joseph's Square



CENTRE PLAN



# 5. Point North



Height: 59m  
GFAR: 6.84  
Streetwall: 16.5m  
Streetwall Stepback: 7m

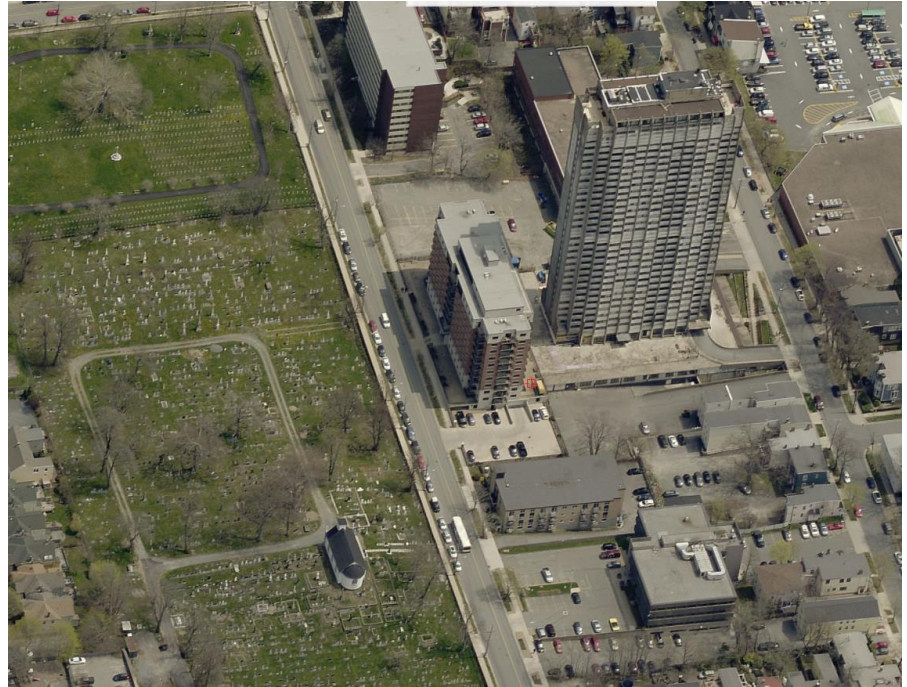
CENTRE PLAN

# 5. Point North





# 6. The James



Height:	30m
GFAR:	3.66
Streetwall:	N/A
Streetwall Stepback:	N/A

CENTRE PLAN



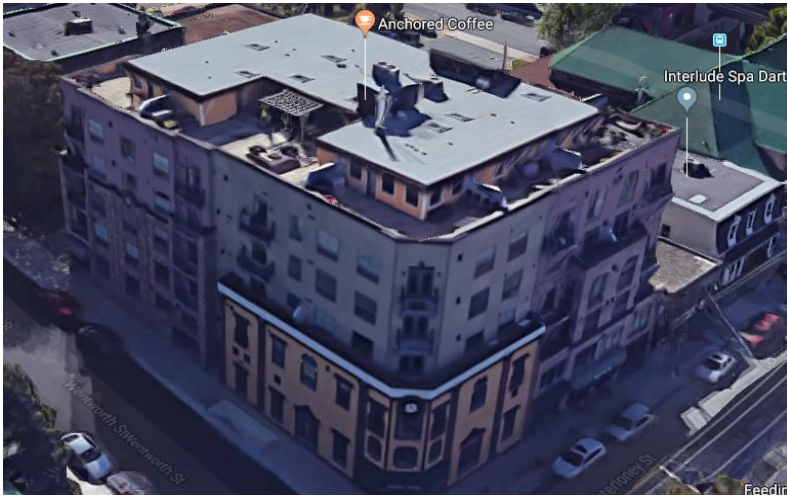
# 6. The James



CENTRE PLAN



# 7. Founders Corner



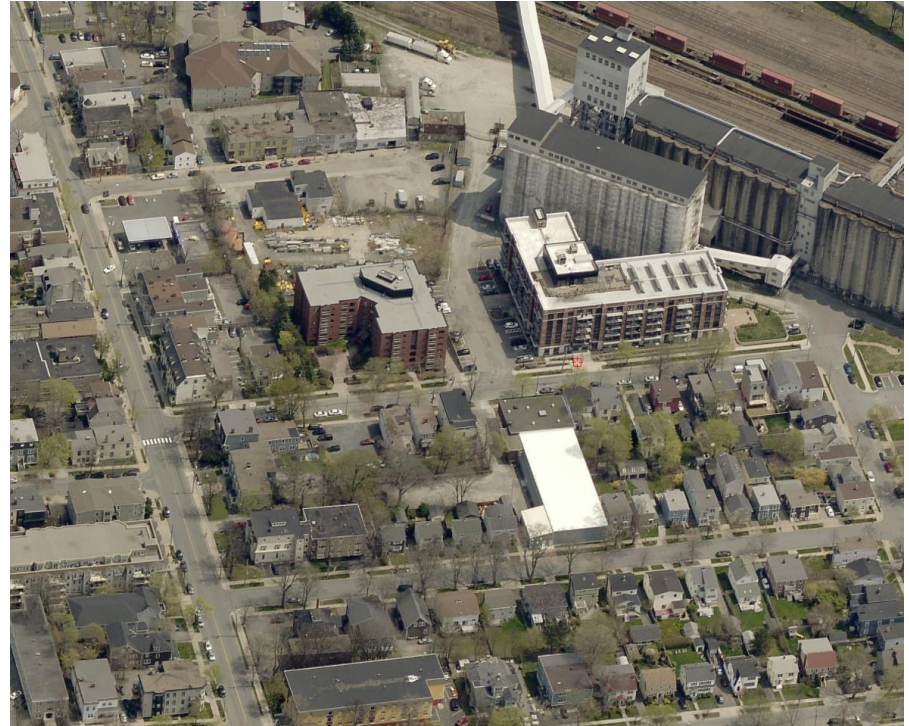
Height: 21.3m  
GFAR: 5.43  
Streetwall: 9m  
Streetwall Stepback: 1m

# 7. Founders Corner





# 8. The Terrace



Height:	18.7m
GFAR:	2.38
Streetwall:	N/A
Streetwall Stepback:	N/A

CENTRE PLAN

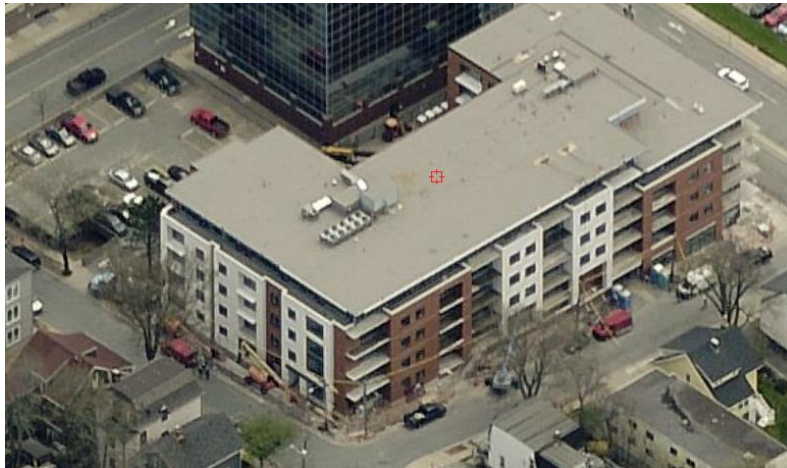
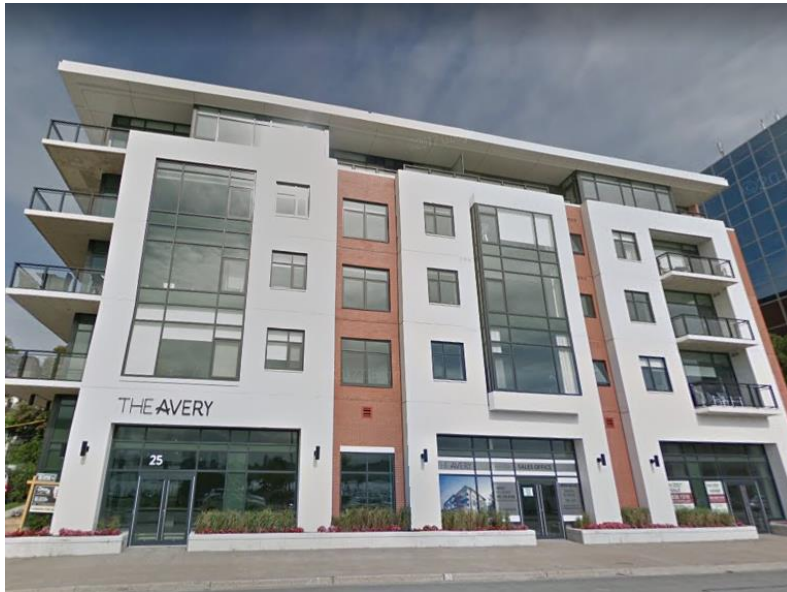
## 8. The Terrace



CENTRE PLAN



# 9. The Avery



Height: 18.7m  
GFAR: 4.56  
Streetwall: 15.5m  
Streetwall Stepback: 3m

# 9. The Avery





# 10. The Maple



Height: 72m  
GFAR: 12.74  
Streetwall: 14m  
Streetwall Stepback: 3m

# 10. The Maple



CENTRE PLAN