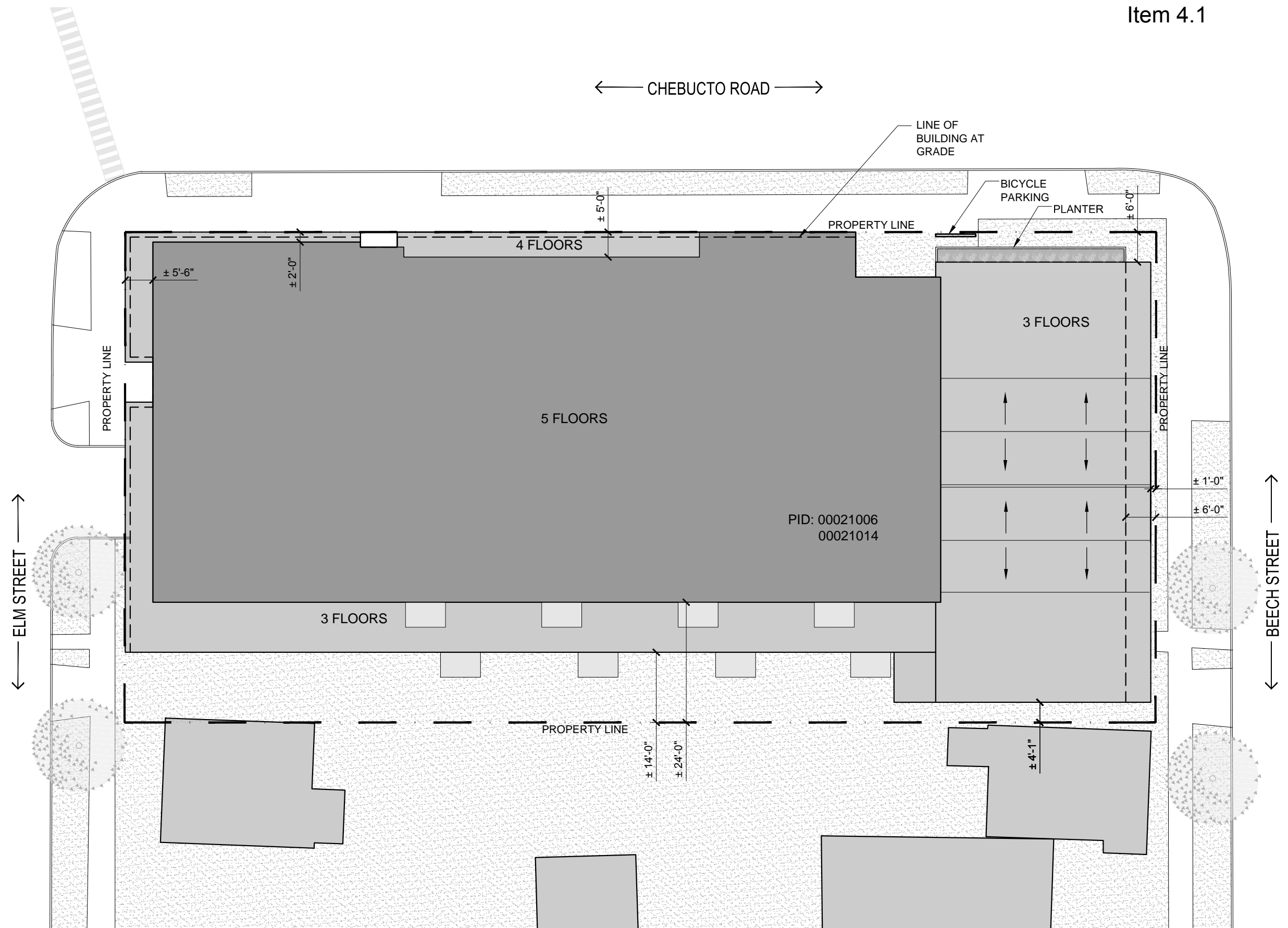
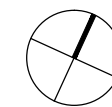
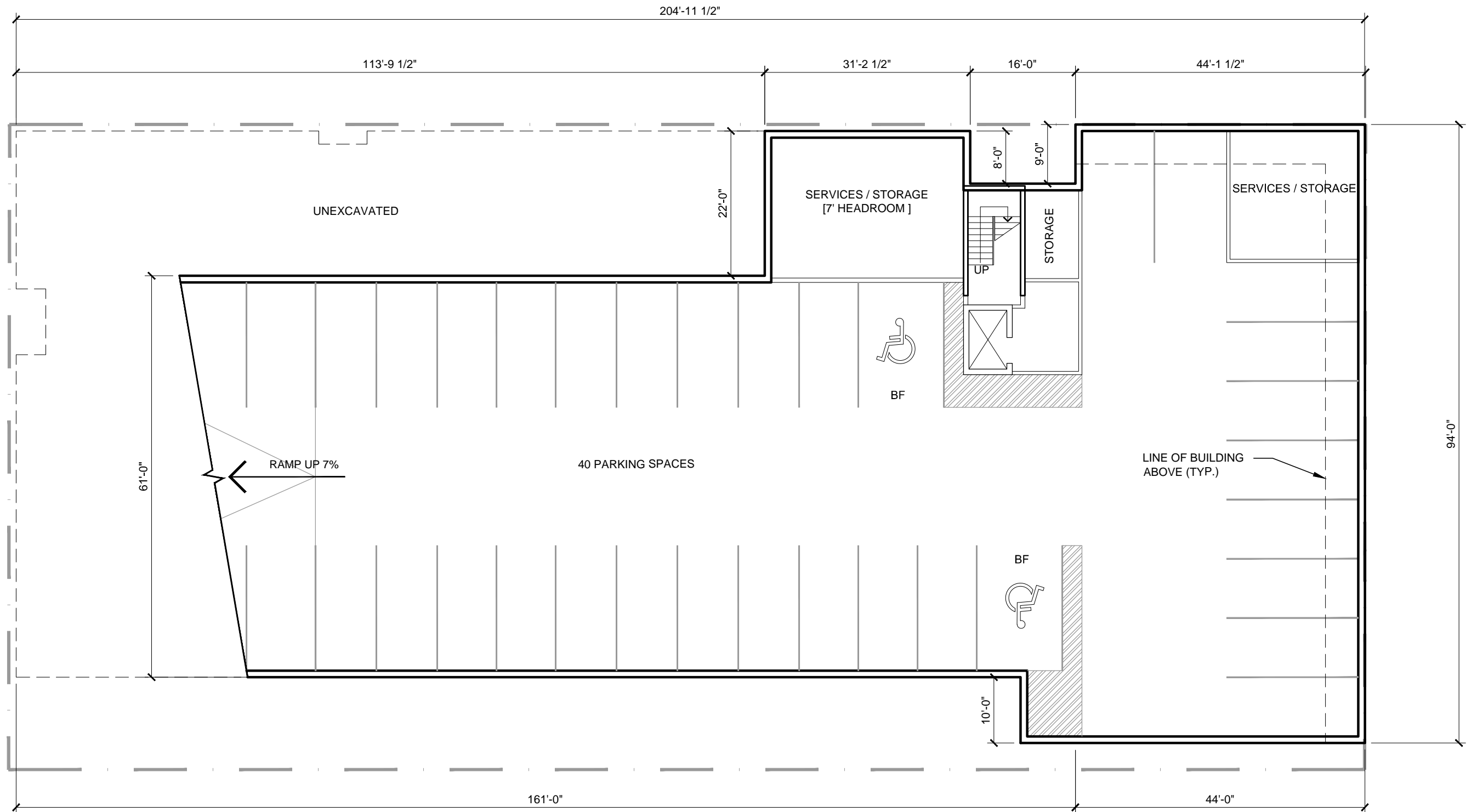
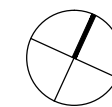
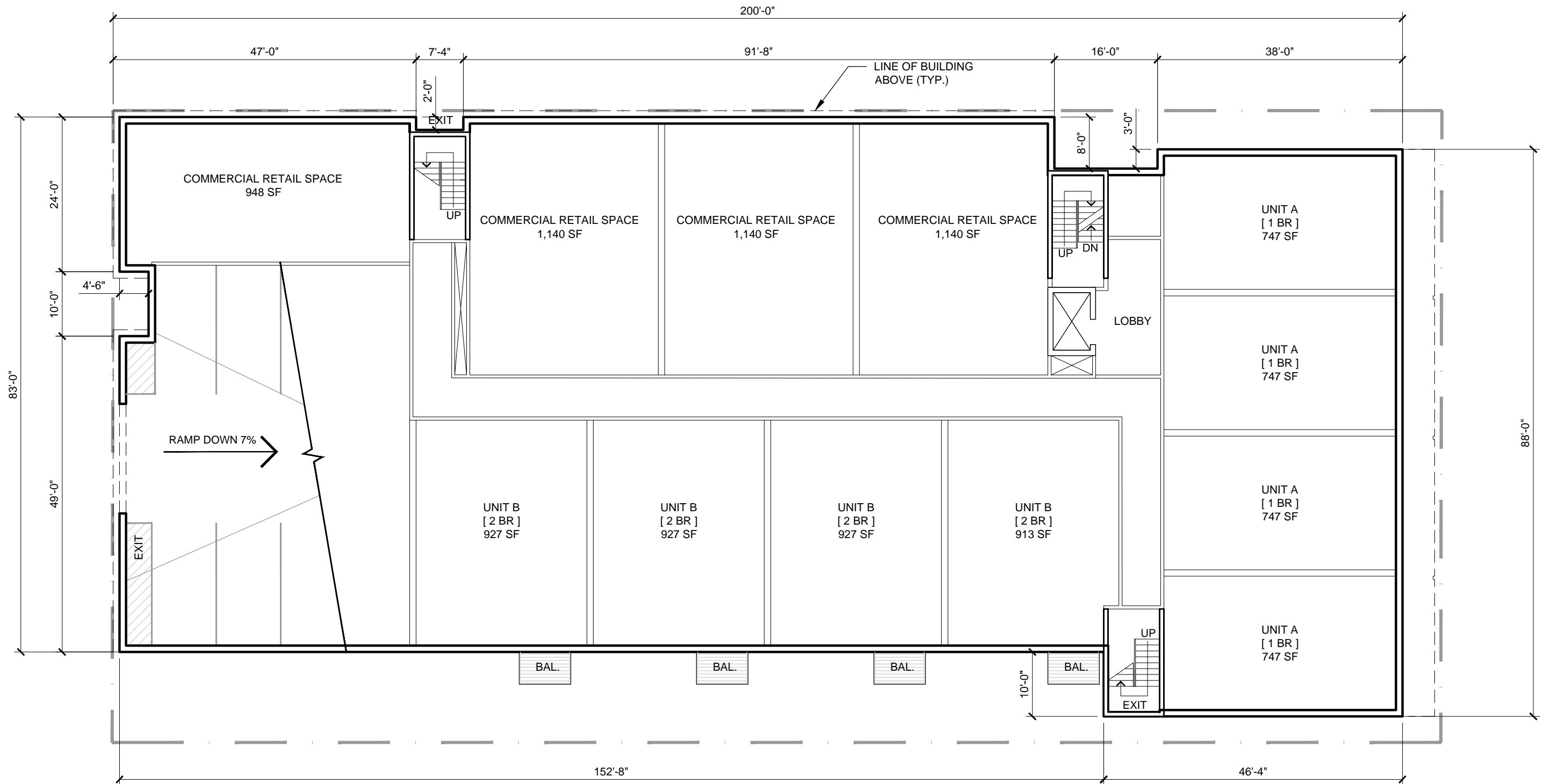
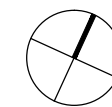
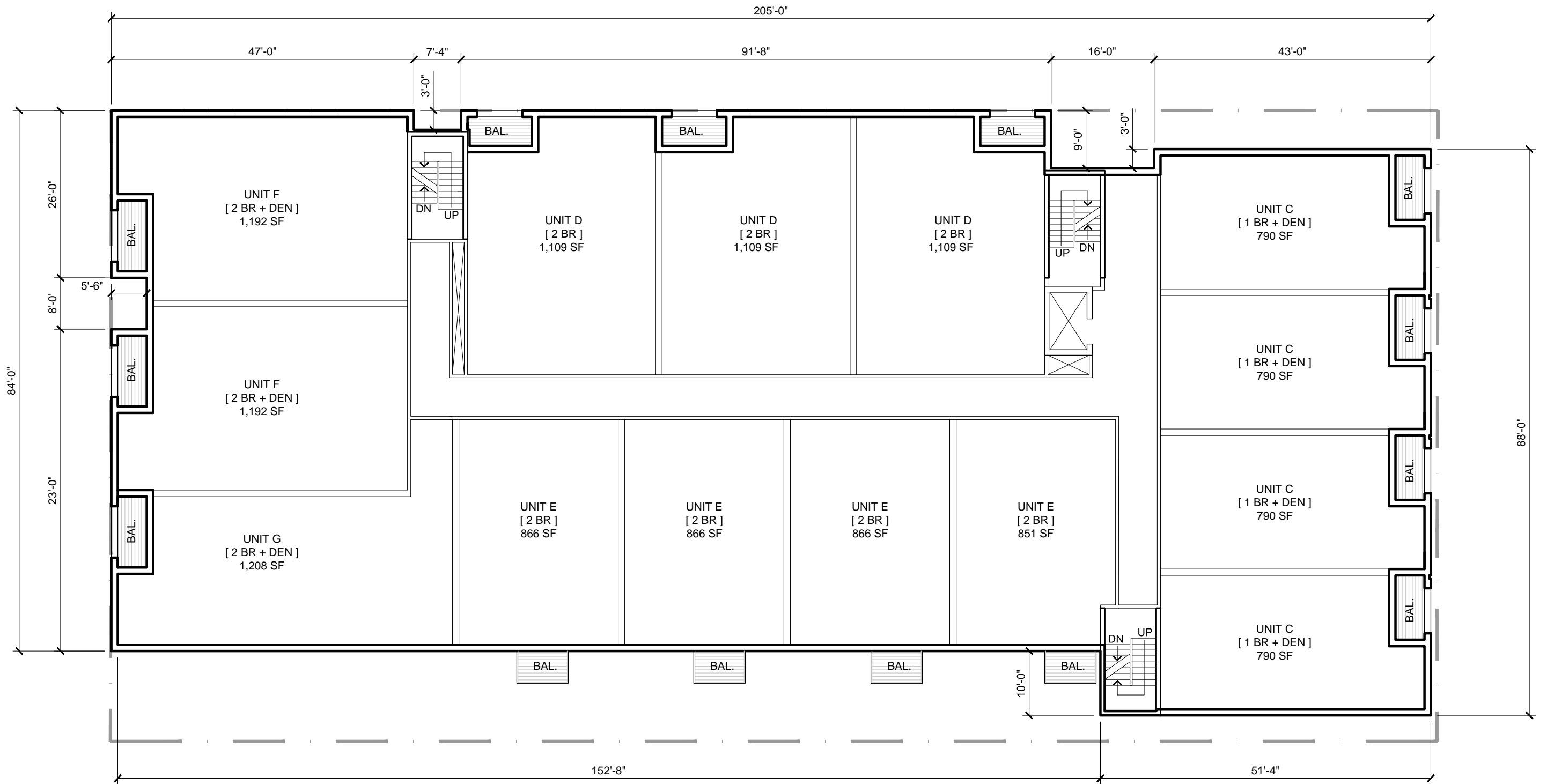


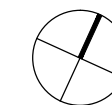
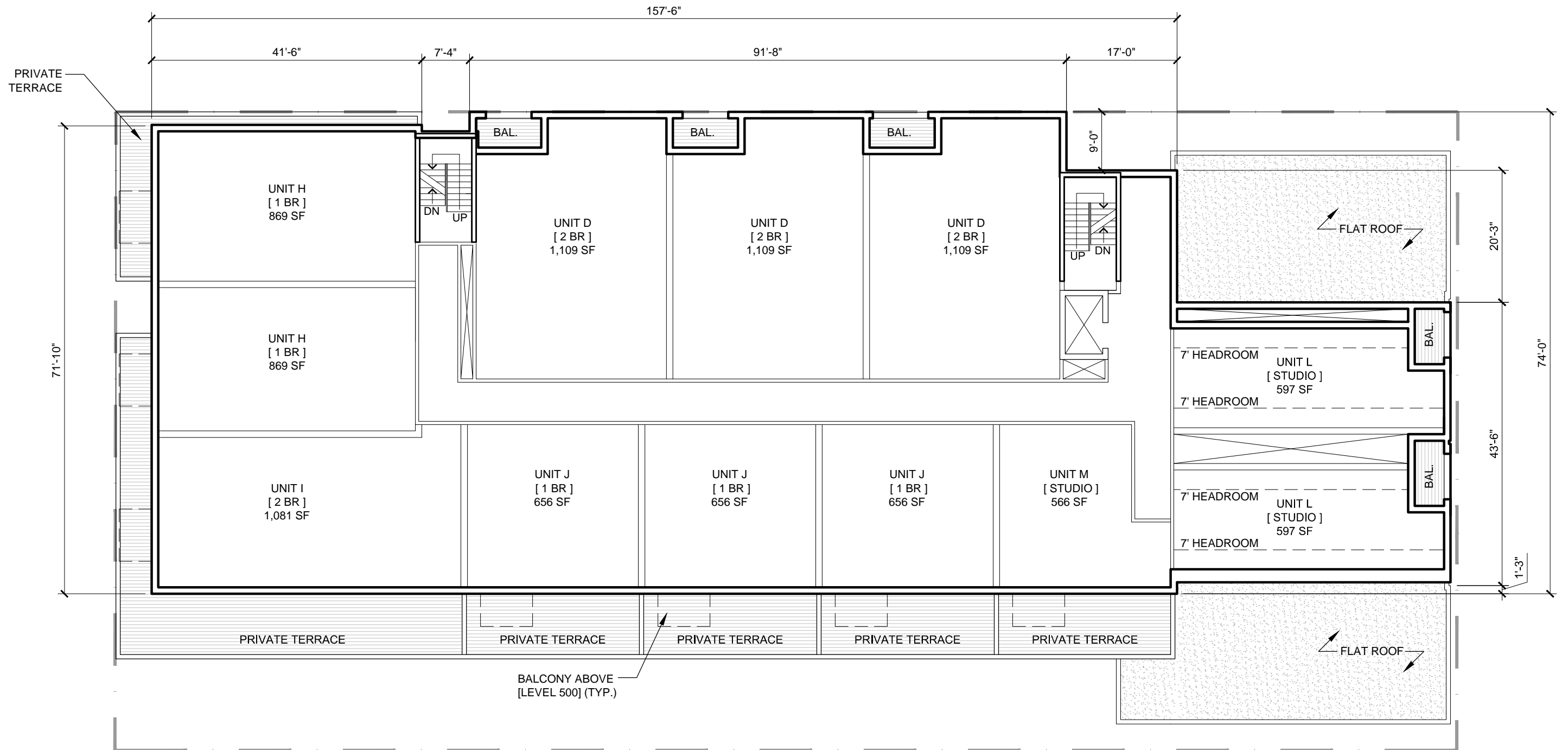
CHEBUCTO DATA TABLE (22 APRIL 2016)						
LEVEL	STUDIO	1 BR	1 BR + DEN	2 BR	2 BR + DEN	TOTAL
100	-	4	-	4	-	8
200-300	-	-	8	14	6	28
400	2	6	-	4	-	10
500	-	6	-	4	-	10
TOTALS:	2 (3%)	16 (28%)	8 (14%)	26 (45%)	6 (10%)	56
DENSITY						
1 BR UNITS	26x 2 ppl				52	
2 BR	32 x 2.25 ppl				72	
TOTAL					124	
PROPERTY AREA						
PROPERTY AREA					20,204 SF	
LOT COVERAGE					± 16,603 SF (82%)	
GROUND FLOOR COMMERCIAL RETAIL AREA:					± 4,062 SF	
LANDSCAPE OPEN SPACE AT GRADE						
LANDSCAPE OPEN SPACE AT GRADE					± 3,601 SF	
TOTAL BELOW GRADE PARKING						
TOTAL BELOW GRADE PARKING					40	

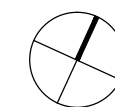
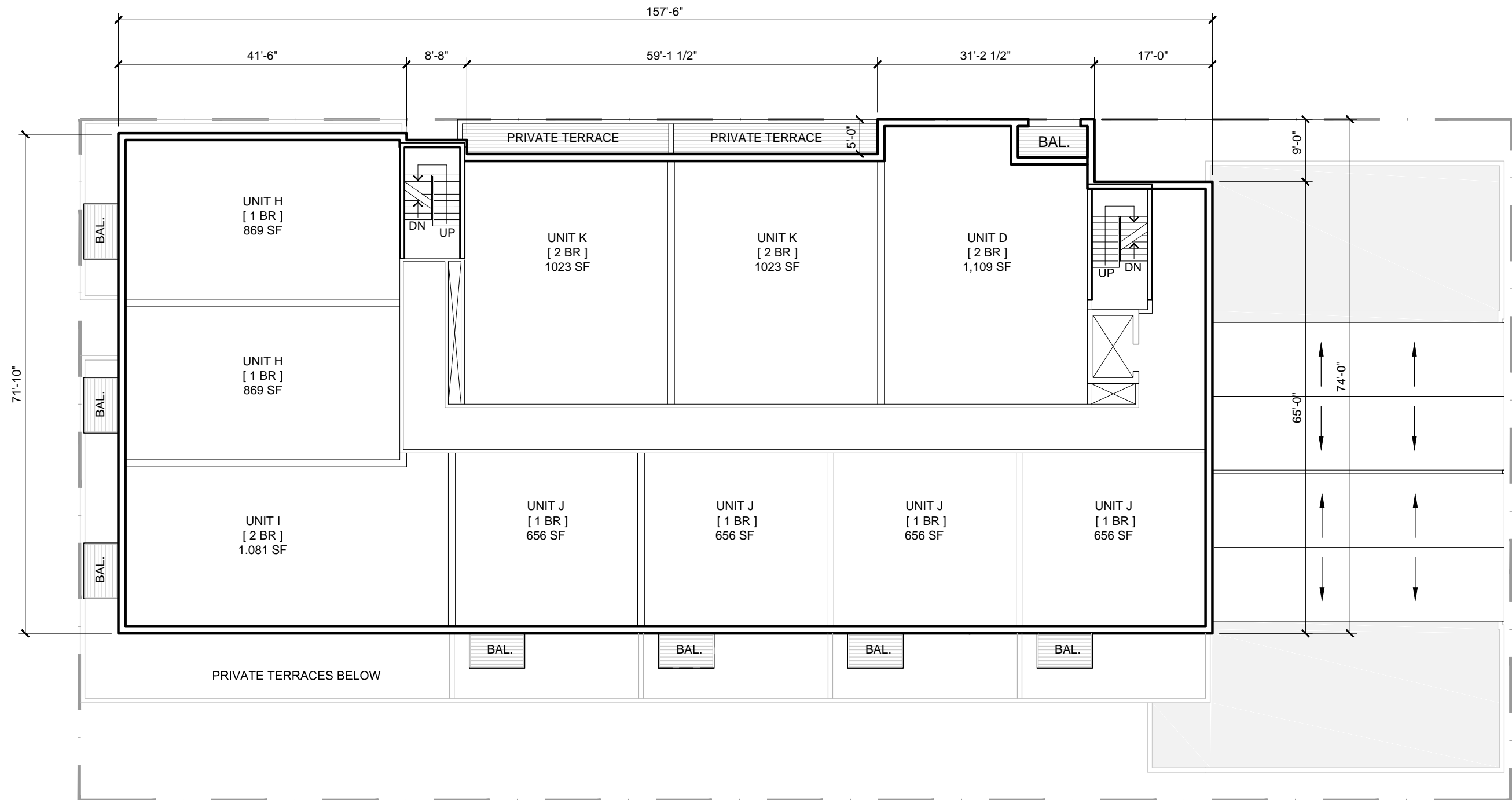


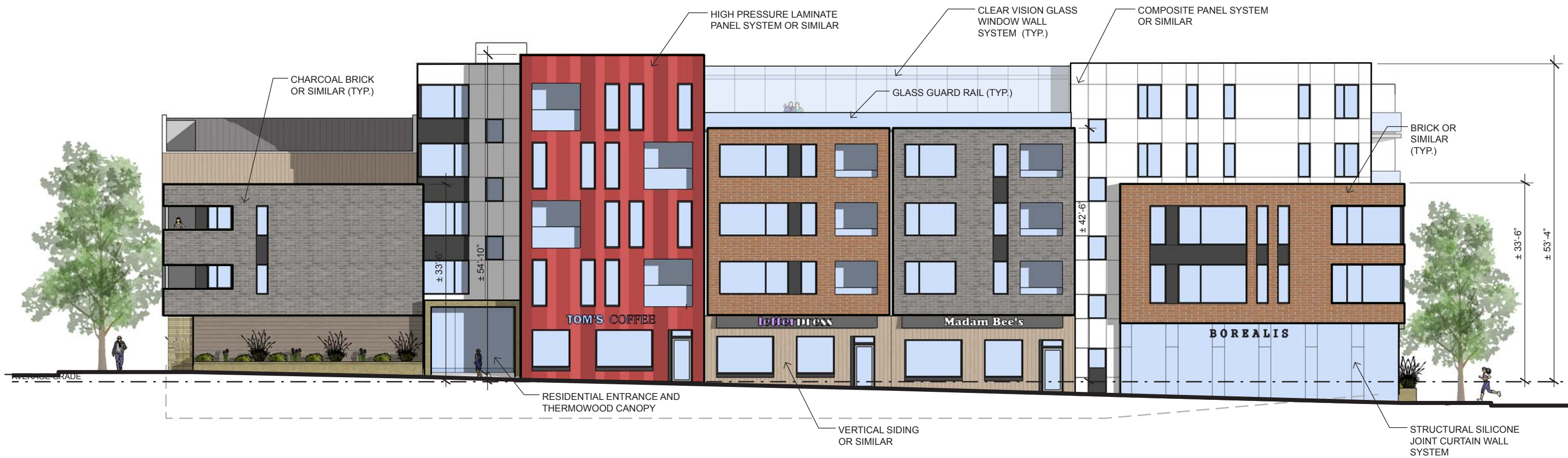












CHEBUCTO MIXED USE DEVELOPMENT

6482 CHEBUCTO ROAD, HALIFAX, NS

NORTH ELEVATION

Project No.: 2015.14

Scale: 1/16" = 1'-0"

Date: 20 Apr 2016



A06



EAST ELEVATION



WEST ELEVATION



CHEBUCTO MIXED USE DEVELOPMENT

6482 CHEBUCTO ROAD, HALIFAX, NS

SOUTH ELEVATION

Project No.: 2015.14

Scale: 1/16" = 1'-0"

Date: 20 Apr 2016

WMFARES
ARCHITECTS

A08



CHEBUCTO MIXED USE DEVELOPMENT

6482 CHEBUCTO ROAD, HALIFAX, NS

PERSPECTIVE VIEW
BEECH STREET & CHEBUCTO ROAD

Project No.: 2015.14
Scale: NTS
Date: 20 Apr 2016

WMFARES
ARCHITECTS

A09



CHEBUCTO MIXED USE DEVELOPMENT

6482 CHEBUCTO ROAD, HALIFAX, NS

PERSPECTIVE VIEW

CHEBUCTO ROAD & ELM STREET

Project No.: 2015.14

Scale: NTS

Date: 20 Apr 2016

WMFARES
ARCHITECTS

A10