

**HALIFAX**

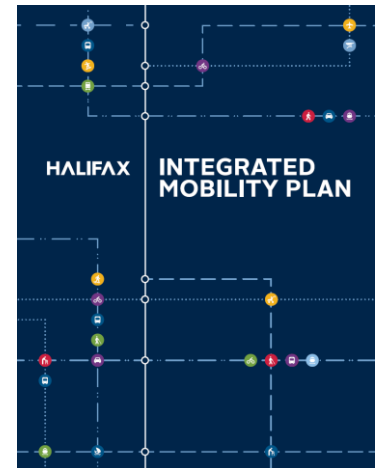
# **Proposed Bayers Road Transit Priority Corridor**

Project Update to Active Transportation  
Advisory Committee

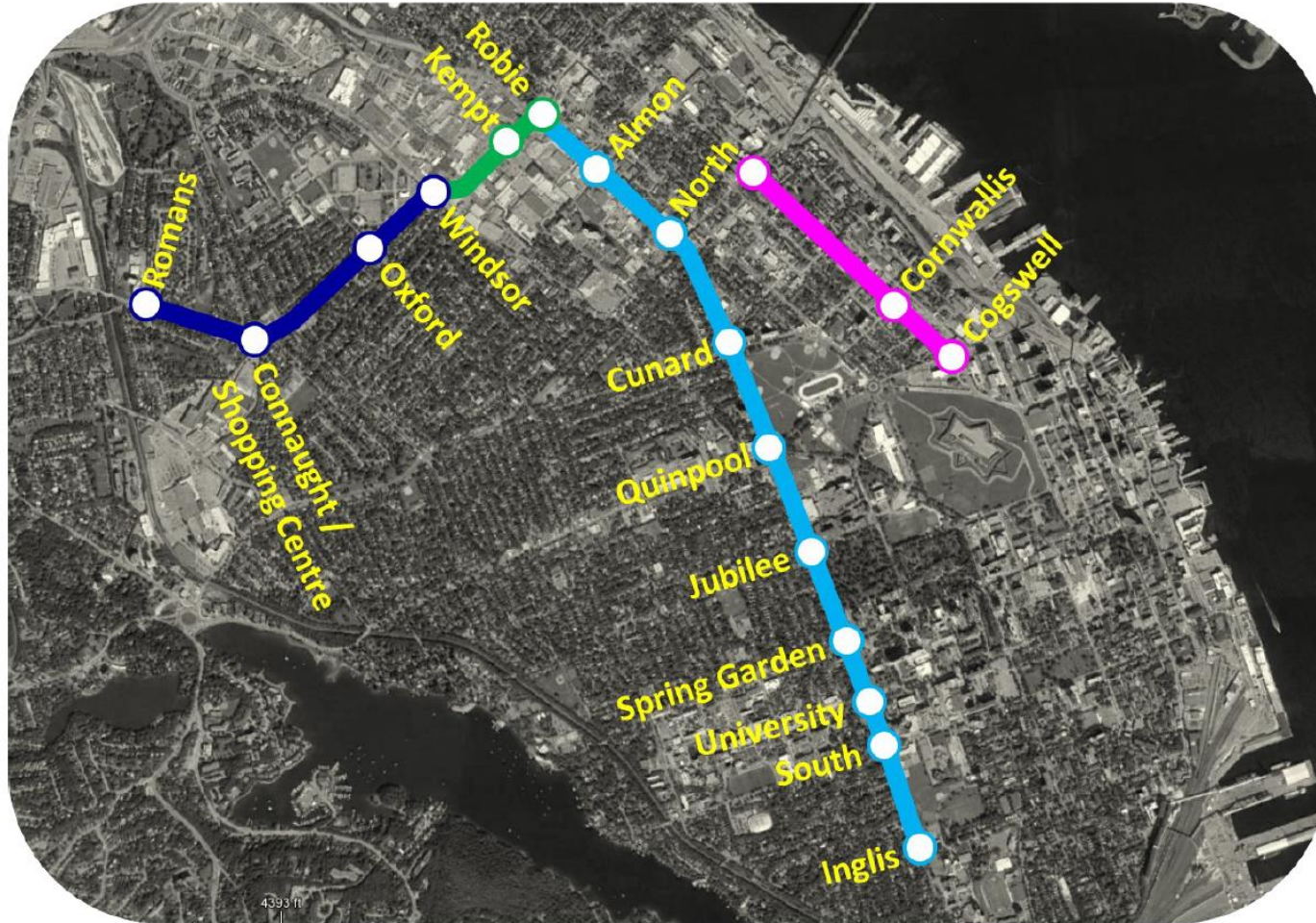
October-19-17

# Project Rationale

- 2016 Halifax Transit Moving Forward Together Plan identifies **Gottingen Street** and **Bayers Road** as ‘critical locations’ for transit priority measures.
- 2017 Integrated Mobility Plan expected to identify the need for transit priority on **Young Street** and **Robie Street**



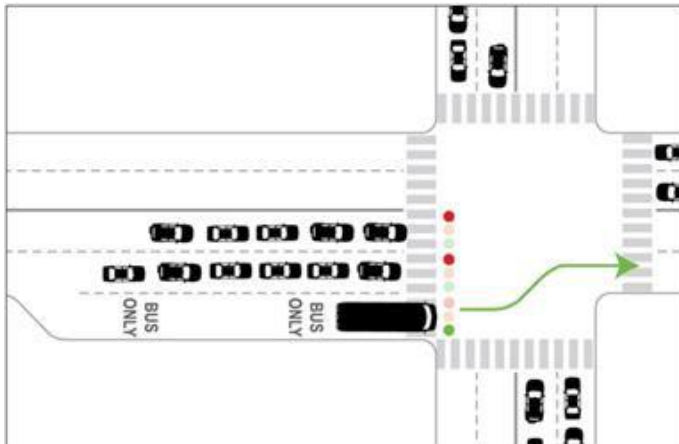
# Proposed Transit Priority Corridors



# What are Transit Priority Measures?

- Tools / treatments used to increase priority for buses on the road network.

**Queue Jump Lane**



**Transit Signal Priority**



**Dedicated Bus Lanes**



# Why Bayers Road?



HALIFAX

# Active Transportation

# AT Planning

- 2016 AT Connection Study  
COLT to Halifax Peninsula

***Objective:*** Identify alternatives for a multi-use AT facility that provides a formal connection between the COLT and George Dauphinee Avenue



ACTIVE TRANSPORTATION  
CONNECTION STUDY:  
Chain of Lakes Trail to Halifax Peninsula

HALIFAX REGIONAL MUNICIPALITY  
BICYCLE NOVA SCOTIA



FINAL REPORT

September 2016

WSP  
1 Spectacle Lake Drive  
Dartmouth, NS B3B 1X7  
Phone 902-835-0955  
Fax 902-835-1045  
www.wspgroup.com



HALIFAX

# Alignment Options





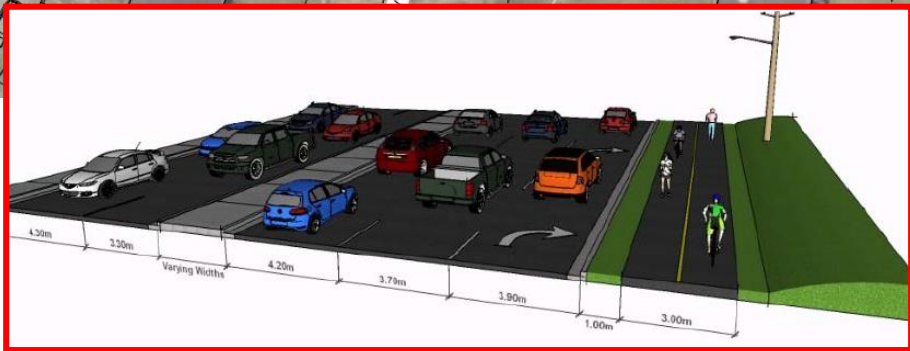
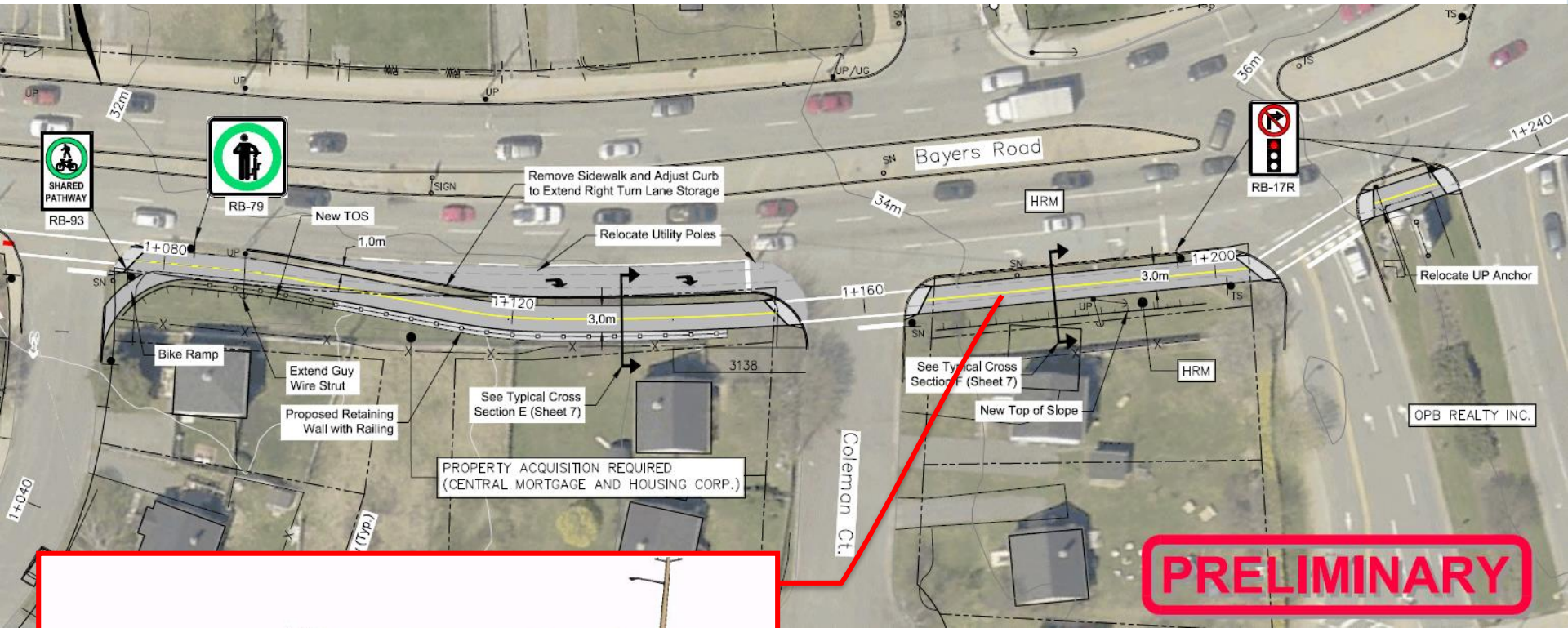
# Challenges



# Functional Design



# Functional Design

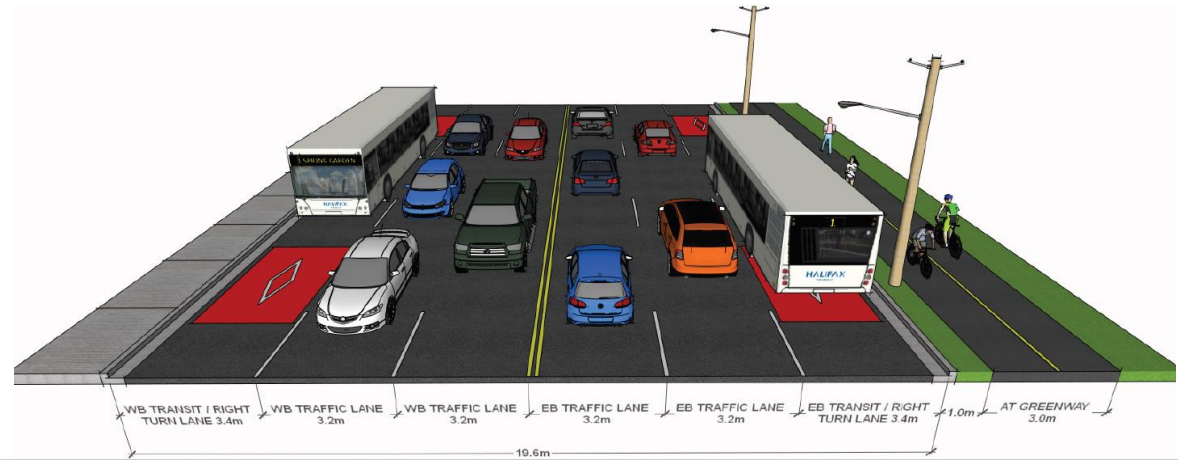


# Transit Priority Corridor

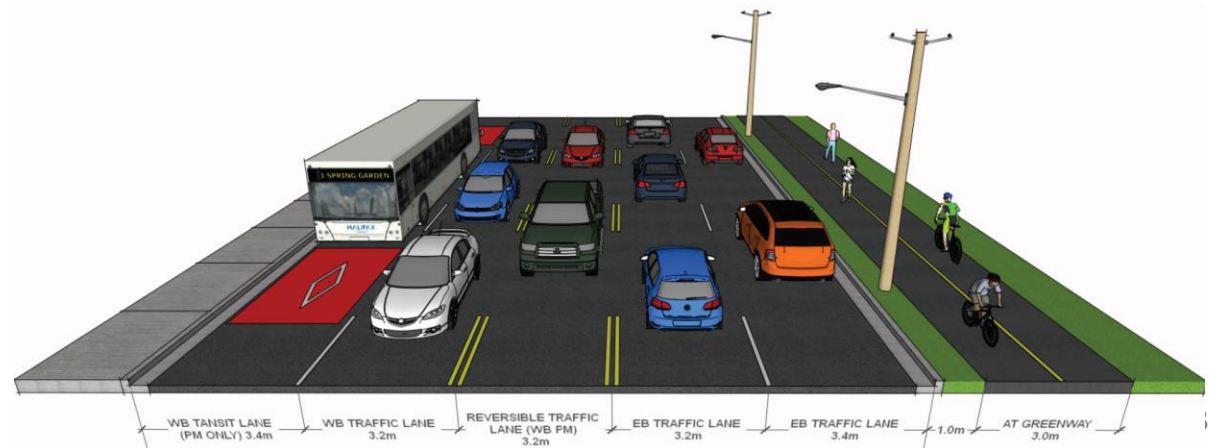
# Options Analysis:

## Romans Ave to Halifax Shopping Centre

- Option 1:  
Dedicated  
Bus Lanes

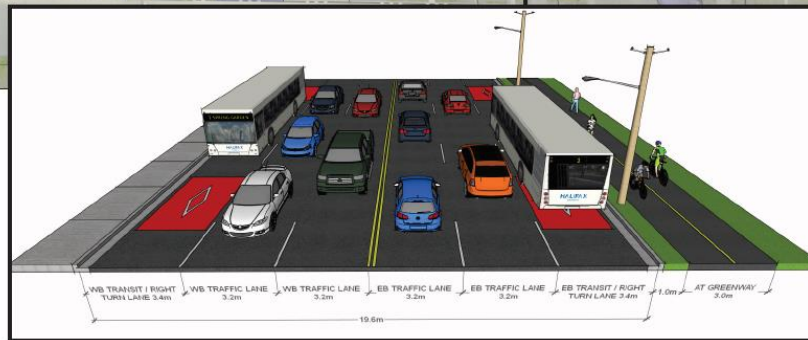


- Option 2:  
Reversible  
Bus Lane



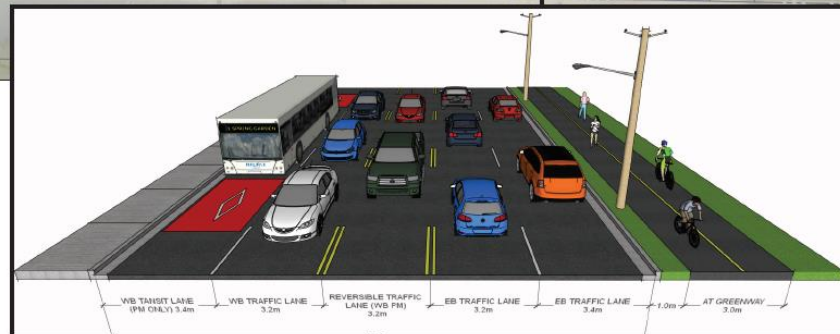
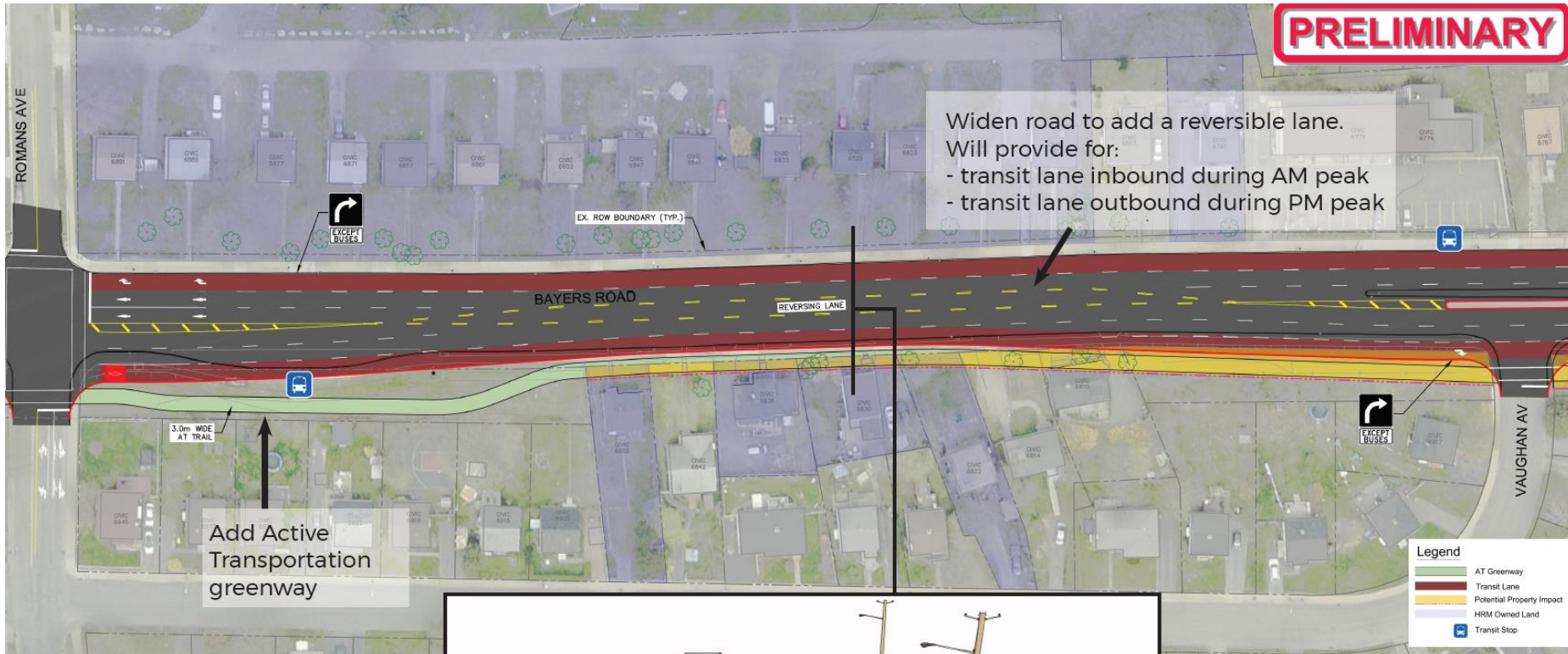
# Option 1: Dedicated Bus Lanes

## Romans Ave to Halifax Shopping Centre



# Option 2: Reversible Bus Lane

## Romans Ave to Halifax Shopping Centre



# Options Analysis:

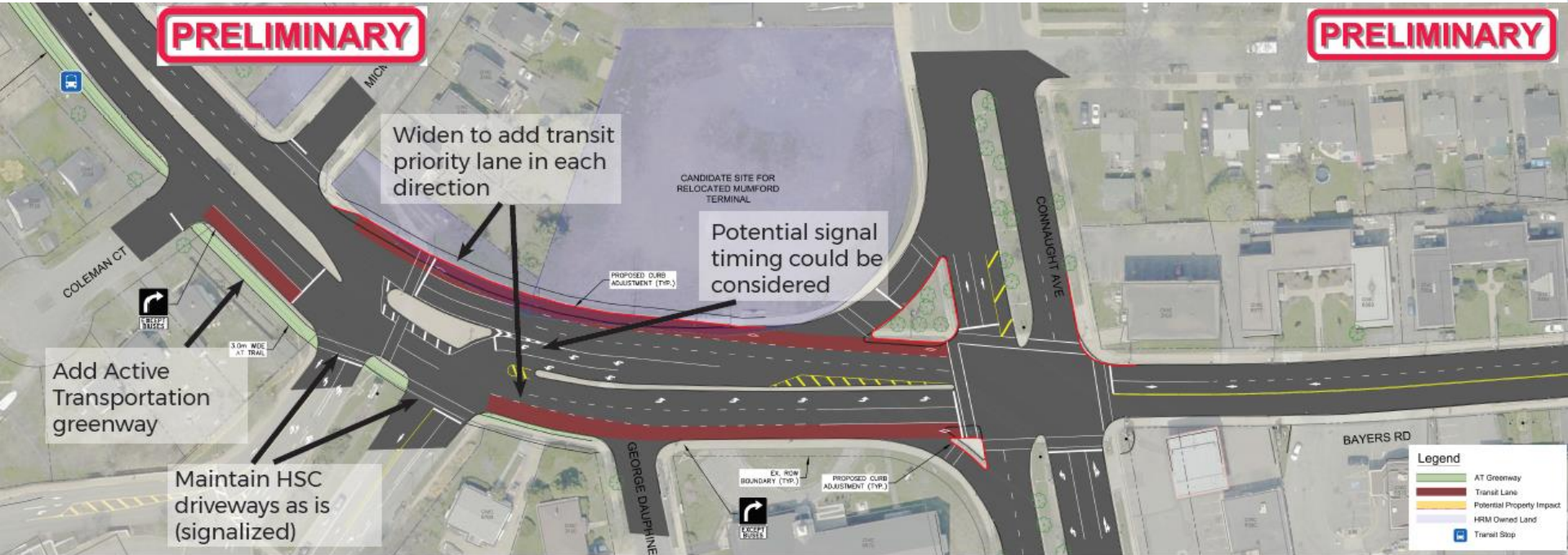
## Halifax Shopping Centre to Connaught Avenue

- **Option 1: High Investment**
  - Dedicated Bus Lanes
  - Grade Separated Connection at Shopping Centre Driveway
- **Option 2: Medium Investment**
  - Dedicated Bus Lanes
  - Realigned Shopping Centre Driveway
- **Option 3: Low Investment**
  - Dedicated Bus Lanes
  - Widening as required



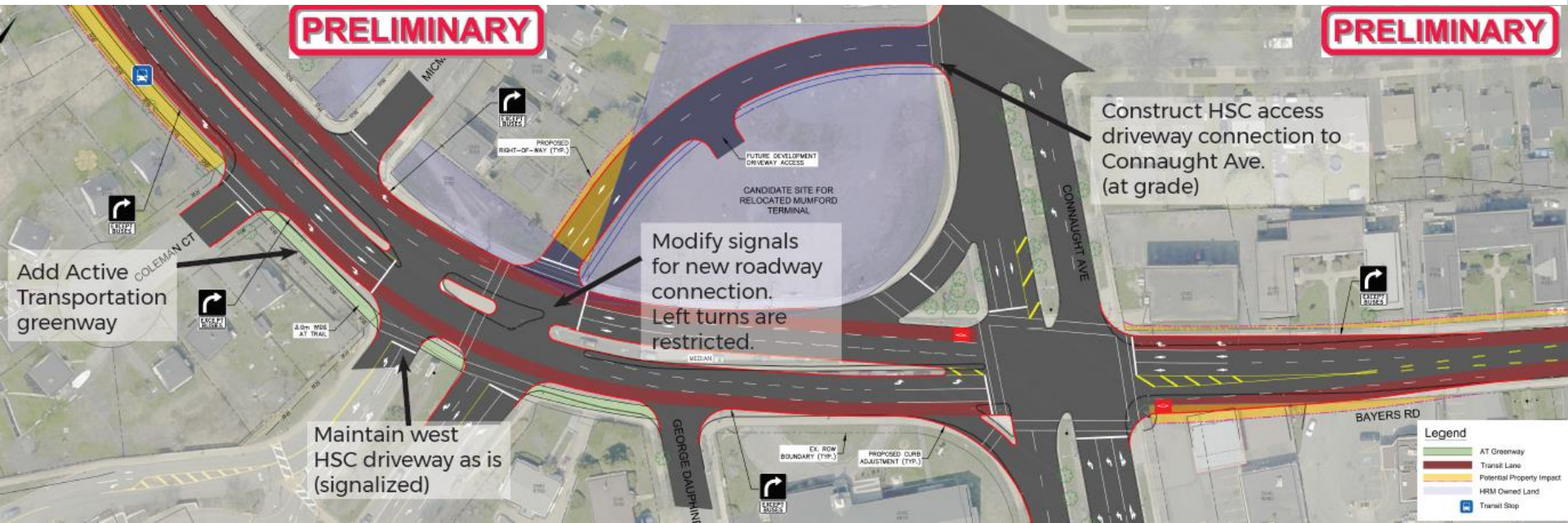
# Option 3: Dedicated Bus Lanes

## Halifax Shopping Centre to Connaught Avenue



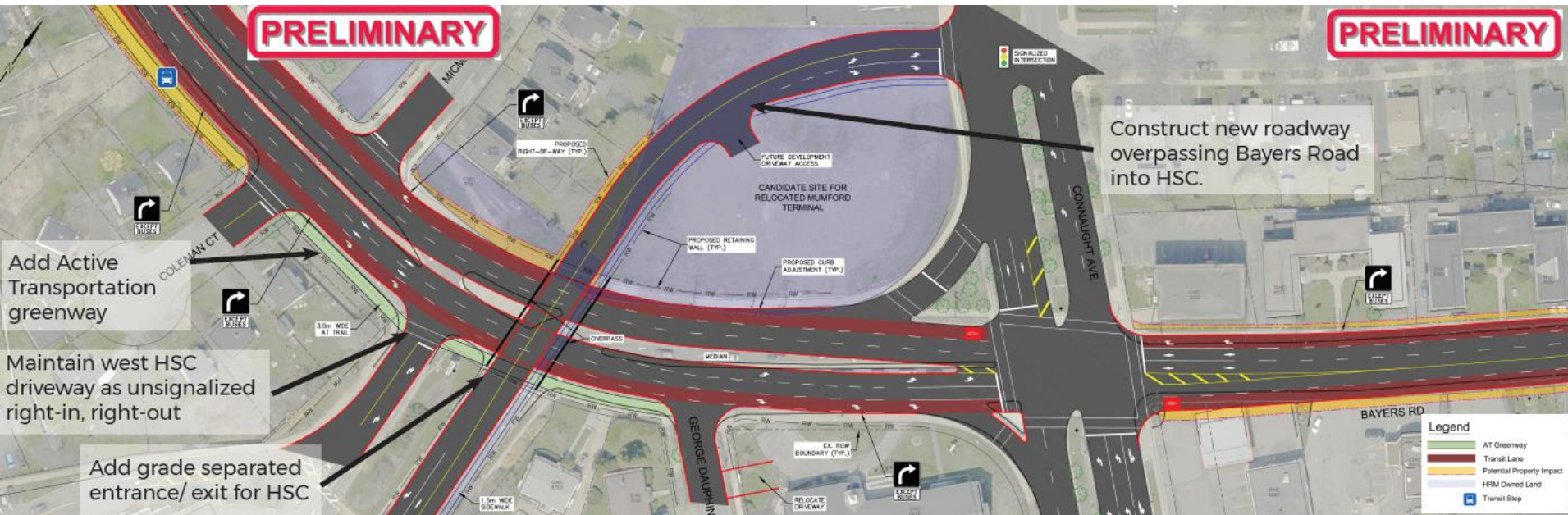
# Option 2: Realigned HSC Driveway

## Halifax Shopping Centre to Connaught Avenue



# Option 1: Grade Separated HSC Driveway

## Halifax Shopping Centre to Connaught Avenue



# Project Timeline:

- **To date:**
  - Stakeholder consultation (August)
  - Public consultation (September-October)
  - Options Evaluation (Ongoing)
  - Functional Design (Ongoing)
- **Next steps**
  - Complete functional design / cost estimates (October)
  - Staff Report (November/December)
  - Detailed Design (Early 2018)